

The Dolphin 7200 with Image-Capture handheld computer incorporates a low-power, high-resolution camera to electronically capture and store images. The terminal can also be used to scan barcodes when equipped with a laser scanner.

These instructions briefly describe how to set-up and use the Dolphin Image-Capture terminal and supplied demonstration software. Refer to Chapters 1 and 2 in the Dolphin User's Guide for more on basic operation of the Dolphin terminal and Chapter 4 for specific details on the Dolphin Image Capture terminal.

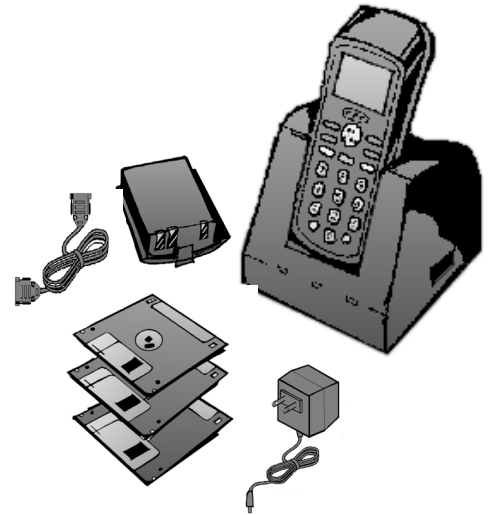
Preparations for the Dolphin

STEP 1: Unpacking the Dolphin IC & peripherals

When you remove the terminal from its box, save the box and shipping material in case you need to ship or store the terminal. The minimum required equipment and tools you need to run the Dolphin IC demo includes:

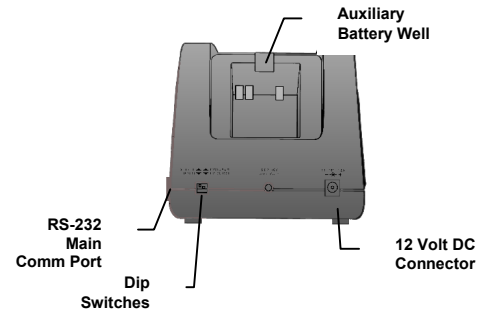
	HHP Part number
Dolphin Image Capture handheld computer	9001XXX 0-2
Battery (1500 mAh, Nickel Metal Hydride [NiMH])	20000233
Dolphin HomeBase & including AC wall transformer	90009330
RS232 serial cable	77900910
Dolphin Handheld Computer/HomeBase User's Guide(*)	80010100
Dolphin Image Capture demo installation disks(*)	
Users Guide & Product reference information CD-ROM	80010120

(*) Item might also be part of the Users Guide & Product reference information CD-ROM



STEP 2: Installing the HomeBase

1. Connect the HomeBase to the host computer or other device by plugging an RS-232 serial cable into the **Main Comm Port** on the side of the HomeBase.
2. Ensure that both "DIP" switches (located on the back of the HomeBase) are in the "Up" position (Single and Program position).
3. Connect the power supply to the Dolphin HomeBase. Plug the AC transformer into the Dolphin HomeBase 12 Volt DC power supply connector.



STEP 3: Charging the main battery pack

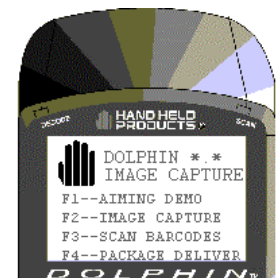
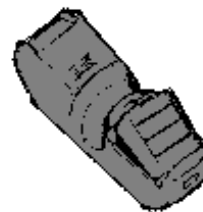
The terminal's main power source is a nickel metal hydride (NiMH) battery which needs to be charged first.

For maximum battery life, Hand Held Products recommends that you deep cycle the battery **twice** before initial use. To deep cycle, insert the battery into the HomeBase auxiliary battery well. Then, push and hold the **Service Aux Batt** button for at least 4 seconds. For more information about battery charging, please consult Chapter 2 of the Dolphin Handheld Computer/HomeBase User's Guide.



STEP 4: Starting the Dolphin IC demo program


- Install the charged battery pack in Dolphin.
- Press the **ON/SCAN** key to turn the Dolphin on. After several seconds, the Dolphin Image Capture main menu screen will appear.




Installing software on your PC & programming the HomeBase

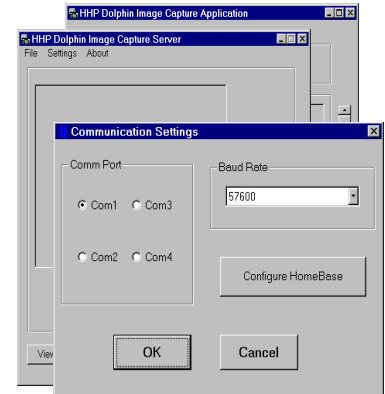
STEP 1: Installing software on the PC

Installation from diskette:

1. Follow the instructions on the diskette label and software installation program.
2. After successful installation, run the program by selecting the  icon.

Installation from CD-ROM:

1. Insert CD-ROM in CD drive and run "HANDHELD.EXE" (Also see the instructions on the back of the CD case).
2. Select the button "Dolphin Image Capture Demo" in the Software install group. Follow the instructions to complete the installation.
3. After successful installation, run the program by selecting the  icon.



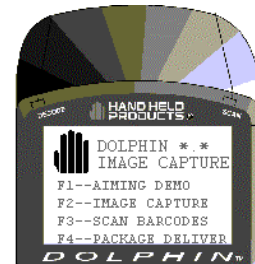
STEP 2: Configuring the HomeBase

1. Select Dolphin Image Capture Server window, select Communication option from the Settings menu to open the Communication Settings dialog box.
2. In the Comm Port dialog box, select the COM port you want to use.
3. Select 57600 Baud Rate.
4. Click Configure HomeBase.

Using Dolphin with Image-Capture and the demo application to take a single image

STEP 1: Taking an image with the Dolphin IC terminal

1. Select "F2 - Image Capture" from the Dolphin Image Capture Main Menu.
2. Select "F2- B/W" from the Pick Image Type Menu
3. Use the sample label included in the Aiming Instruction Guide to practice aiming and taking images. Press the ON/SCAN key. The white LEDs will turn on and an image will appear on the Dolphin display. Keep the ON/SCAN key pressed until you see the image you want to capture on the screen. If the image is acceptable, release the ON/SCAN key, press ENTER to save the image and proceed to the next step. If the image is not satisfactory, press the ON/SCAN key again to take a new image.



STEP 2: Transferring an image from Dolphin IC to Host Computer

Place Dolphin with Image-Capture terminal in the HomeBase; after a few seconds the Dolphin will begin transmitting the file.

STEP 3: Viewing images on host computer

1. Select the window called HHP Dolphin Image Capture Server.
2. After successful communication, the last image taken with Dolphin will appear on your PC.