



NEO is small. Very small. But it takes no prisoners.

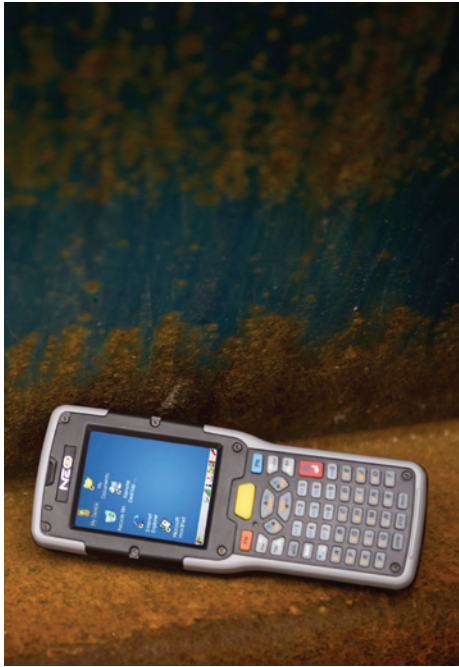
Retail. Postal and Courier. Warehousing and Distribution.
Supply chain. Arenas and sports venues.

NEO plays a key role in them all, every day. And they love it.

Is NEO the most compact, intelligent, rugged handheld computer
around? Quite possibly...

NEO

Power To Your Pocket



POCKET DYNAMO

You need smaller, lighter data collection tools. But you won't compromise on power or functionality. Now you don't have to.

NEO proves that exceptionally good things come in small packages. Its compact size (it weighs just over 275 g) coupled with a raft of features makes it perfect for the mobile workforce.

The pocket dynamo is setting industry alight. Stock checking. Inventory tracking. Light warehouse duty or full-on, in-store retail. NEO takes them all on. You want some?



FEATURES & BENEFITS

It Doesn't Mess Around

NEO may be small but don't be fooled. It's unbelievably rugged. Which means it's never out of action. And productivity never dips.

This lean machine can withstand being dropped from 4 feet to polished concrete. Twenty-six times over (it could take more). It packs an IP rating of 54, so you don't have to worry about dust or moisture. And it can operate in extreme conditions: from 14°F to 122°F (-10°C to +50°C).

Plus, a ten-hour battery life means it lasts the whole shift.

Striking Ergonomics

We always put the worker at the heart of our design. That's why NEO just feels right. It's bright, high-resolution colour display is angled towards the user. This makes it a dream to use – unlike the frustrating 'scan, tilt and squint' action of other devices.

And just feel the weight. Or lack of it. The stylish NEO tips the scales at under 10oz.

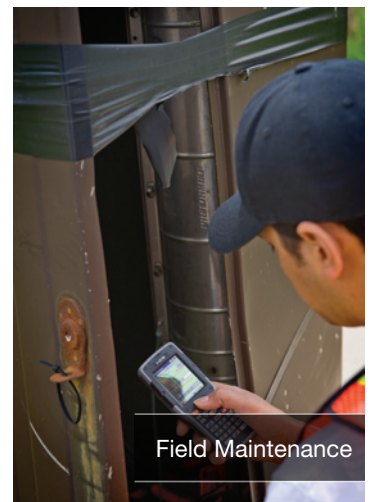
We Can't Stop Cramping

You wanted it, so we've given it to you. NEO is Windows®-based and integrates with loads of advanced data capture and communications functions. WLAN and Bluetooth® connectivity – check. VoIP, IM and texting functionality, so you're never out of touch – that's here too.

And there's no need to fear the future. NEO can easily be expanded to incorporate new technologies, like RFID, as and when your apps demand it.

Choices, Choices

Different apps have different requirements. NEO supports them all – it's available with 48-key alphanumeric or 26-key numeric keyboards.



For more information, please visit www.pSIONTEKLOGIX.COM

NEO

Accessories



Quad Unit Docking Station

Supports the simultaneous charging of four units and provides Ethernet connectivity to each device.



Base Unit Desktop Dock with Modem Option

Simultaneously charge main unit and spare battery. Includes a Micro USB Connection for data transfer. The optional integrated analog modem allows data connections over a PSTN line and is designed to offer a cost-effective solution for wide-area data exchange, without the need for always-on connectivity.



Pistol Grip

Quick, simple pistol grip installation or removal requires no screws or tools. Clip it on for inventory checking and remove it for price checking.



Belt Kit

Quick, ergonomic device access with this quick release, quick insertion belt clip.



Hand Strap

Maintain a secure grip on your NEO with this ergonomic hand strap that includes a stylus holder.

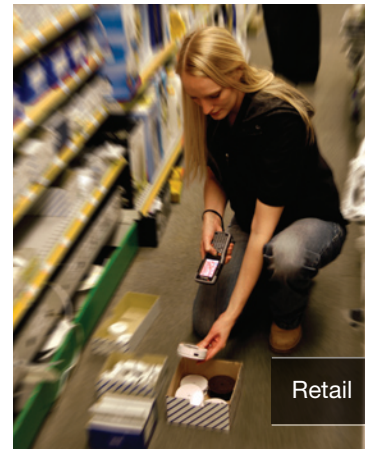


Adapters to USB & Power or RS232

These adapters connect NEO to USB or RS232 serial while on the move. The power-in jack of the PX3054 can be used in conjunction with the AC/DC wall adapter or the 12-24V cigarette lighter adapter.



Postal and Courier



Retail



Warehouse



Meter Reading

NEO

Specifications



PLATFORM

- Marvell® PXA270 Processor
- 312 or 624 MHz
- 128 MB SDRAM
- 128 MB Flash ROM



WIRELESS COMMUNICATIONS

- On-board IEEE 802.11b/g (CCX V4 Certified)
- On-board Bluetooth® 2.0 + EDR radio (10 m range)

OPERATING SYSTEM

- Windows® CE 5.0 Core
- Windows® CE 5.0 Professional

APPLICATION SOFTWARE*

- Internet Explorer® 6 for CE
 - Wordpad
 - Active Sync
 - Open TekTerm
 - ANSI
 - TESS terminal emulations
 - IBM 3270, IBM 5250, HP 2392
 - Wavelink®
 - MCL
 - MCC
 - PTX Connect
- *O/S Dependent



BARCODE APPLICATIONS

- 1D Laser Scanner Option
- 1D Imager Option
- 2D Imager Option

PROGRAMMING ENVIRONMENT

- HTML, XML
- Mobile Devices SDK
- HTML, XML
- Java™
- Visual Studio® 2008
- Standard protocol APIs – Windows® sockets



USER INTERFACE

- Multicolour LED for scanning and charging

Display (Backlit)

- 2.7" QVGA portrait mode
- QWERTY virtual option
- Sunlight readable transmissive with touch screen
- Colour 240 x 320 graphic TFT
- Passive stylus or finger operation
- Ergonomic tilted display

Audio

- Built-in microphone and receiver on all "WiFi" variants
- 85 db internal beeper
- Bluetooth® (on equipped models)



Keypad (Backlit)

- 48 key Alpha Numeric
- 26 large key Numeric
- LED backlit keypad
- Ergonomically enhanced for ambidextrous one-hand operation

POWER MANAGEMENT

- 3.7V @ 3300 mAh Li-ion rechargeable battery
- 10 hour battery operation (5 scans, transmit & receive/min)
- Built in gas gauge & performance monitor
- System backup (10 minutes) during battery swap
- 3 day real time clock backup
- Adjustable battery allocation between system backup and runtime

EXPANSION SLOTS

- One MicroSD slot

EXPANSION PORT

- Battery Power
- USB signaling



DOCKING PORT

- RS232
- USB
- DC Input

PHYSICAL DIMENSIONS AND WEIGHT

- Device: 6.6" x 2.5" x 1.3" (168 mm x 64 mm x 34 mm)
- Grip Area: 2.2"/ 56 mm (W)
- Weight with battery: 0.6 lb (275 g)

REGULATORY APPROVALS

- FCC 15.247
- IC RSS210
- CE ETSI EN 300 328, ETSI EN 301 489, EN 55022, EN55024
- Safety IEC 60950-1
- Laser Safety IEC 60825-1

USER ENVIRONMENT

- Operating Temperature: 14°F to 122 °°C (-10°C to +50°C)
- Storage Temperature: -4°F to 140°F (-20°C to +60°C)
- Relative Humidity: 5% to 95% RH non-condensing
- Rain & Dust Protection: IP54, IEC 529
- Drop: 4 ft (1.2 m) – 26 drops to polished concrete
- Shock and Vibe: Random vibration 1 m²/s³ @ 5 to 200 Hz, 0.5 m²/s³ @ 200-500 with duration of 100 min/axes, 3 axes, and shock of 150 m/s² @11ms and 300 m/s² @ 6ms
- ESD: +/- 8k Vdc air discharge, +/- 4k Vdc contacts

A complete list of accessories is available at:
www.pSIONteklogix.com



Product is ROHS Compliant.

* Note this product will carry the CE Mark.
 * Specifications are subject to change without notice.



For more information, please visit www.pSIONteklogix.com

© Pision Teklogix Inc., Pision Teklogix, Ikön, NEO, WORKABOUT PRO and Return on Mobility are registered trademarks or trademarks of Pision PLC and subsidiaries. Other products mentioned in this document may be trademarks of Pision Teklogix Inc. or trademarks or registered trademarks of other software, hardware, or service providers and are used herein for identification purposes only. Windows and the Windows Logo are trademarks or registered trademarks of Microsoft Corporation in the United States and/or other countries. *Front image: actual size when printed at 100% scale. NA0709



About BarcodesInc

Who We Are

BarcodesInc is North America's leading provider of barcode and mobile computing solutions. We are a leading provider of barcode and mobile computing solutions. We are a leading provider of barcode and mobile computing solutions.

We Owe Our Success To You

Our success is due to the support and trust of our customers. We are committed to providing the highest quality products and services to our customers.

Why Choose BarcodesInc?

Dedicated Account A UbU Yf

Our Account Managers will not compromise when it comes to providing you top-notch service. Your Account Manager is the primary point of contact for your business and makes it a priority to get to know you, your company and all your needs.

Highly-Trained Technical Support

Our technical staff has the broadest knowledge and every significant certification in the industry. One of our friendly experts is always available to suggest products and solutions for any situation.

Incredible Value

Our purchasing power means big savings for you. Whatever your project, our team will work hard to deliver a solution that fits your budget.

Largest Inventory in the Industry and Same-Day Shipping

Whatever your barcoding, mobile computing, or printing needs, we will fill your order and ship it the same day.

Premier Access to Top Manufacturers

BarcodesInc maintains strong strategic partnerships with the leading manufacturers in barcoding, mobile computing, printing and RFID.

Responsive Customer Service

Every phone call and email is responded to promptly, completely and accurately by our customer service team.

Easy Returns

Damaged, defective or incorrectly ordered goods may be returned without hassle.

BRANDS



AND MORE