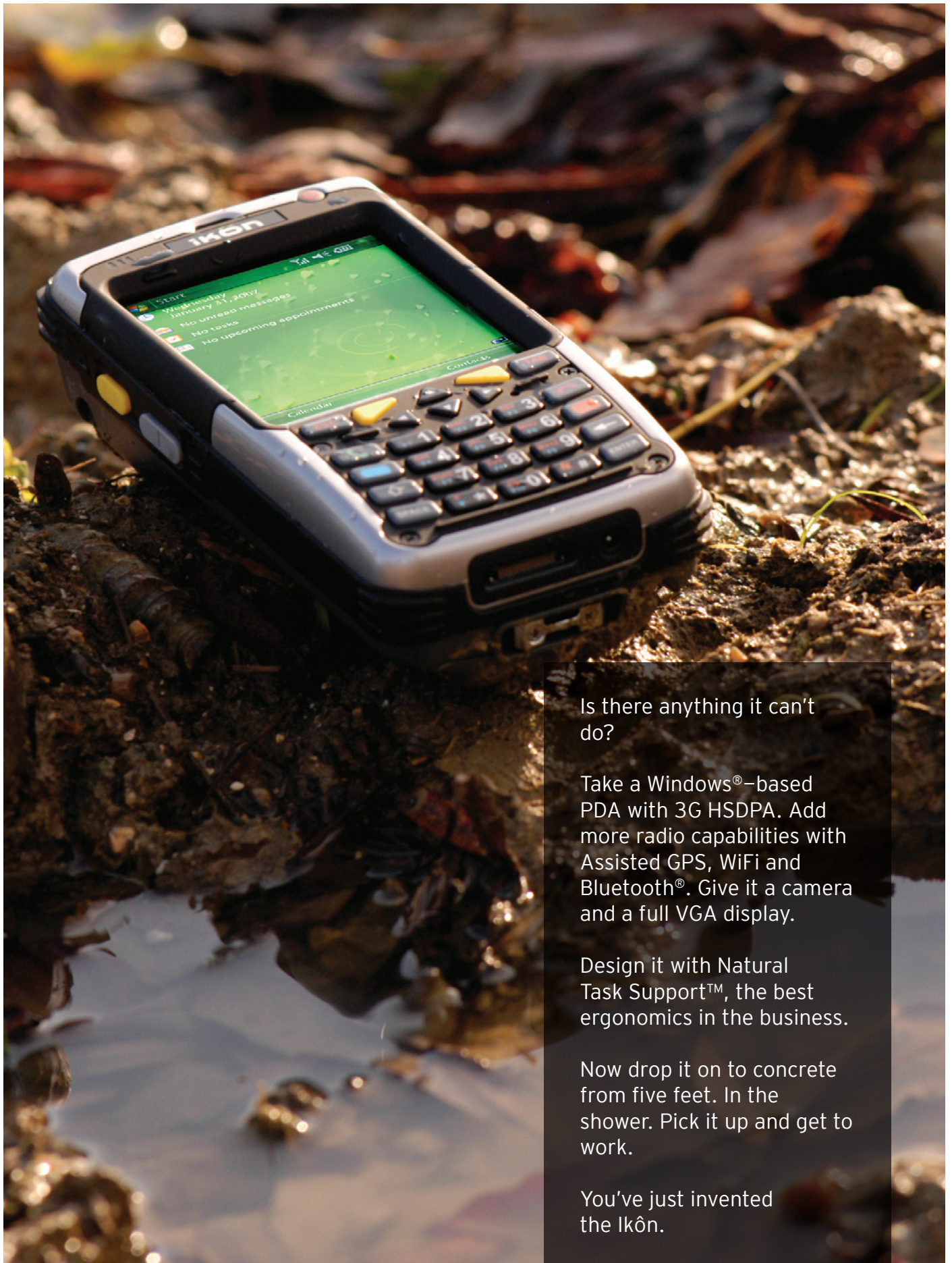


IKÔN

A Rugged PDA For The Real World

psion



Is there anything it can't do?

Take a Windows®-based PDA with 3G HSDPA. Add more radio capabilities with Assisted GPS, WiFi and Bluetooth®. Give it a camera and a full VGA display.

Design it with Natural Task Support™, the best ergonomics in the business.

Now drop it on to concrete from five feet. In the shower. Pick it up and get to work.

You've just invented the Ikôn.

Look What's Built In

There are rugged handheld computers and there is Ikôn, the most sophisticated mobile workforce automation device on the planet.

Pick it up and you notice a few things right away. It just feels right. The way it rests in your hand. The balance. The feel. Next, you'll notice the big, bright, full VGA display and the QWERTY keyboard option, colour-coded for usability. Fire it up. You've got everything you need to turbo-charge your mobile workforce. Integrated imager or scanner. Colour camera. WiFi for the local network and 3G HSDPA for further afield. Plus Bluetooth® and Assisted GPS to find your way to the next task. Breakthrough antenna technology means you stay connected even at the edge of the coverage zone; and the longest battery life in the market so you stay supported all shift long; and beyond.



This is what mobile productivity was supposed to look like. This is Ikôn.



Queue Busting



Postal/Courier

Features & Benefits

Look what's built in

Ikôn integrates data capture, voice and data communications in one compact device. Wireless capability includes WiFi, cellular 3G HSDPA and Bluetooth® connectivity. And Assisted GPS harnesses the power of location-based apps.

Mobile workers love Ikôn

Because it's built on the principles of Natural Task Support™, Ikôn helps mobile workers get the job done faster and more comfortably. The 3.7-inch full VGA display makes it incredibly easy to read even complex graphics and CAD drawings in low-light situations. The ergonomic keypad is designed for one-hand use with clear, unambiguous feedback. Plus great balance, hand-feel; and stunning looks.

Rugged beyond the ratings

Mobile workers drop things. It's unavoidable. So Ikôn withstands drops from 5 feet (1.5 metres) to polished concrete. And since mobile environments are unpredictable, Ikôn

has an IP65 rating, for protection against dust and water sprayed from all directions. Finally, don't worry about an external antenna getting in the way or breaking - because there isn't one.

Longer battery life

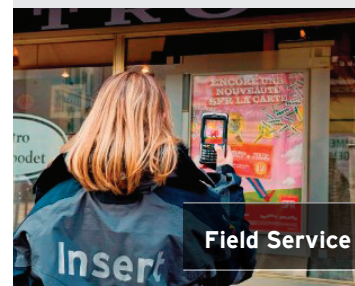
The highest battery capacity on the market ensures a full-day of productivity for mobile workers. And we've tweaked the operating system and added utilities to squeeze every last coulomb out of it (like using the minimum intensity for the scanner unless it needs more power, then ramping up automatically).

Expand into an unknown future

Unlike most sealed, rugged handheld computers, Ikôn gives you three expansion slots (USB, Serial and DC Jack) so you can add functionality as your needs change.

Our growing ecosystem of developer partners are constantly creating new hardware modules for Psion devices (biometrics or RFID anyone?)

CASE STUDY



Field Service

INSERT

The French leader in billposting renews its technology with Ikôn

- Communication is faster in the field thanks to wireless synchronization
- WiFi connectivity allows for optimized and more reliable communications between Head Office and the field
- GPS functionality allows for geocoding of all media to ensure precise location information that helps optimization planning.



Quad Docking Unit

Provides Ethernet connectivity and simultaneous charging for up to 4 devices. Anti-slip feet enable usage on tables or desks and the design allows access to all buttons and keys. And don't worry about using it after a day in the field - drain holes and a rugged mating connector mean that you can place the Ikon in the unit even if wet.



Base Unit Desktop Dock

Charge an Ikon and spare battery simultaneously while connecting via USB. Designed with the same key access and drain holes as the Quad Docking Unit above.



Powered Vehicle Cradle 12-24 V

With a single hand release mechanism, a speaker for hands free calling, a power indicator LED, a spare stylus holder and multiple mounting options, the Ikon's powered vehicle cradle keeps your workers productive. Non-powered option available.



Carry Case Pouch

Made of durable Koskin material, this carry case includes a locking, swivel belt clip and quick, easy access to the Ikon. It also provides easy access to the bottom connector and DC port.



Hand Strap Kit

A secure, ergonomic way to carry the Ikon. It is attached by fixing the ends of the strap to the anchors located on the back and bottom of the unit. Tether comes attached to retractable stylus - no assembly required.



Cigarette Lighter Adapter

Gives users the flexibility of being able to power and charge the Ikon on the go and fits any standard 12VDC car cigarette receptacle.



Field Maintenance

"This renewal aims ... to develop new services for our customers, particularly by taking pictures of the tasks done using the new snapshot functionality. We also want to communicate faster with our field force thanks to wireless synchronization, and to secure productivity gains thanks to enhanced mobile applications." - Insert



Meter Reading



Public Safety / Inspection

IKON

Specifications



References

- Ikôn: Model Number 7505
- Ikôn with optional RFID Module HF-AM1-İKON, Model Number CH1071

Platform

- Processor: Marvell® XScale PXA270 624MHz
- Memory: 128MB RAM, 256MB Flash

Operating System

- Windows® CE 5
- Windows Mobile® 6x Classic or Professional



Wireless Communications

- WLAN/PAN Options
- 802.11b/g
- Bluetooth® v2.0, Class II WWAN Options
- 3G HSDPA
- Integrated Antenna

Global Positioning System

- Integrated Assisted GPS (A-GPS)

Physical Dimensions & Weight

- 6.3" x 3.2" x 1.8" (160mm x 81mm x 45mm)
- 1 lb (450 g) with battery pack



Barcode Applications

- 1D Laser Scanner Option
- 1D Imager Option
- 2D Imager Option



Power Management

- 5000 mAh Lithium Ion Battery Pack

User Interface

- 3.7" VGA Display
- Keyboard (Backlit)
- QWERTY Option
- Numeric Option
- AZERTY Option
- Ergonomically enhanced for ambidextrous one-hand operation



- Hands Free Speaker
- Microphone/Receiver
- Headset Port

Expansion Slots

- Dedicated 60 Pin Expansion Connector (internal to PDA)
- microSD (SDHC compatible)



External Connectors

- USB On-the-Go (OTG) Functionality
- Serial
- DC Jack

User Environment

- Operating Temperature: 14F to 122F (-10C to +50C)
- Storage Temperature: -4F to 140F (-20C to +60C)
- 5% to 95% RH non-condensing
- Rain & Dust Protection: IP65
- Drop: Withstands multiple drops from 5 ft. (1.5 meters) to polished concrete
- Shock and Vibe: 5-400Hz PSD (random) and 30g (3 axis)
- ESD: +/- 8kVdc air discharge, +/- 4kVdc contacts

Camera

- Colour 2 megapixel fixed focus with flash



RFID HF Module Option

- HID Global Multi ISO reader inside
- Frequency: 13.56 MHz
- Output power: 200 mW
- Power supply: 3.7V
- Consumption: RF on 230mA, RF off 90mA
- USB Serial link
- Packaging: Snap on
- Antenna: Integrated, Horizontal
- Tag Protocol: ISO 15693, ISO14443A, ISO14443B and NFC enabled
- Tag Type: Mifare® Standard, Mifare® 4k, Mifare® Pro, Mifare® Ultralight, Mifare® DESFIRE, Mifare® SmartMX, I-CODE SLI (SL2 ICS 20), I-CODE EPC (SL2 ICS 10), I-CODE UID (SL2 ICS 11), I-CODE, NFC (Reader To Tag Mode), SLE 55Rxx, SRF55VxxP+S, SLE 66CL160S, SLE 66CLX320P, SR176, SR1X4K, LRI 64, MRI 512, EM4135, KSW Temp Sens®, Tag-it™ HF-I Standard, Tag-it™ HF-I Pro, Jewel Tag, Sharp B, ASK GTML, ASK GTML2ISO, TOSMART P032/P064, ISO 15693 Tags, ISO14443A Tags, ISO14443B Tags
- Two SAM modules



Reading & Writing Area



Examples of Reading & Writing Performances

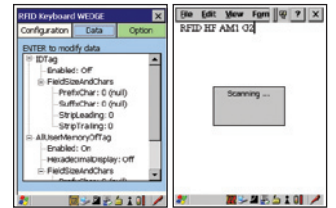
- ISO format (smart card) / ISO 15693: up to 60 mm
- ISO format (smart card) / ISO 14443B: up to 35 mm
- ISO format (smart card) / Mifare®: up to 50 mm

Application Software

- RFID demo software to read and write tags



- RFID Wedge mode: emulation of bar code scanner



Programming Environment

- HTML, XML
- Hardware Development Kit (HDK)
- Standard Protocol APIs
- Windows® sockets (CE.net)
- Psion Mobile Devices SDK
 - NET and C++ programming using Microsoft® Visual Studio® 2005
 - Java™ programming supporting JDK 1.2.2 or higher
- Psion RFID SDK
 - NET and C++ programming using Microsoft® Visual Studio® 2005

Regulatory Approvals

- CSA, CE
- FCC, ETSI
- WEEE

A complete list of accessories is available at: www.pSION.com



Product is ROHS Compliant.

* Note this product will carry the CE Mark.
* Specifications are subject to change without notice.



For more information, please visit www.pSION.com

© Psion Inc., Psion, Psion Teklogix, Ikôn, NEO, WORKABOUT PRO 3, and Omnil are registered trademarks or trademarks of Psion PLC and subsidiaries. Other products mentioned in this document may be trademarks of Psion Inc. or trademarks or registered trademarks of other software, hardware or service providers and are used herein for identification purposes only. Windows and the Windows logo are trademarks or registered trademarks of Microsoft Corporation in the United States and/or other countries. A40111