

OAKTON®

temperature and humidity datalogger monitors

TempLog & RH/TempLog

Automatically log temperature and humidity readings for months, then **download data to your computer or printer!**

Use for long term temperature and humidity datalogging

ideal for shipping or storage, laboratories, factories, cold rooms, greenhouses, and more!

Memory holds up to 16,000 time/date stamped readings

Compact splashproof housing

TempLog is IP65 rated;
RH/TempLog is IP60 rated

Large LCD display

lets you immediately view current conditions; displays min/max values by day(s) or hour(s) with a quick button press

Infrared (IRDA) communication

document max/min values quickly with optional IR printer

Selectable sampling rate

sample from once per 10 seconds to once per two hours (software required)

Selectable alarm setting

display flashes when set limits are passed (software required)

External sensor input

for a temperature, contact, voltage, or current sensor

Software features

Customize logging parameters

set logging interval, delayed or immediate start, overwrite data or stop when full

Stores 20-character message

lets you "name" device for later identification

Graphic or tabular display

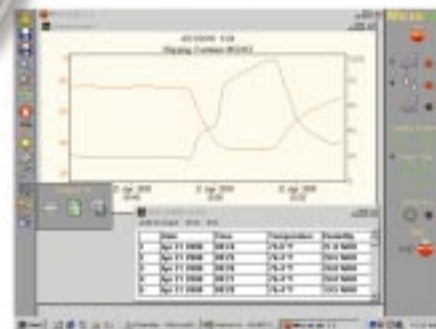
print or export data for use in spreadsheets

Powerful display options

zoom in and adjust scale to focus on most important data

Pinpoint data for quick analysis

point and click to see individual points or difference between two points



Left: TempLog and RH/TempLog shown at actual size.

Above right: These loggers accept a remote temperature, contact, voltage, or current sensor.

Middle right: Infrared port lets you download readings directly into your printer or computer with an IRDA port.

Bottom right: Software lets you manipulate data and create data graphs.

The OAKTON TempLog and RH/TempLog let you effortlessly track important temperature and humidity data for months!

These loggers automatically save up to 16,000 measurements on selectable intervals. The LCD display shows you current conditions. Press a button to view minimum and maximum readings over the last 1-24 hours / 1-30 days. Point the logger toward an optional IR printer for a hard-copy printout of max/min data. Or, download data to your computer via the infrared port or cable. Software lets you graph, analyze, or export your data.

The compact splashproof housing guarantees that each logger will function properly even in busy or rugged areas. The long lasting, replaceable battery powers your logger for two years. Choose from temperature or temperature/humidity models.

Software/cable package is required to change factory settings or download data. One package can be used with multiple loggers (order software separately). See the back of this sheet for ordering information and complete specifications.

OAKTON® ...setting the standard, again and again™

Set a start time and a sample time of once per 10 seconds to once per 2 hours through the software package.



Select the sensors you need to use in your next data recording (temperature, humidity, or external sensor) via the software package.



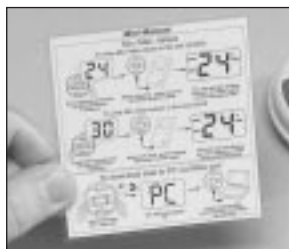
Large display shows current readings. Press a button to show minimum and maximum readings by hour(s) or by day(s).



Easy access connections on unit back for computer cable (order separately) or external temperature sensor.



Quick-reference instruction card lets you view instrument directions at a glance.



Optional portable printer lets you download readings through the infrared port—no cables needed!



Bulletin Log A1R2

TempLog & RH/TempLog

• Applications •

Shipping and Storage: Place on trucks, airplanes, trains, or in warehouses to safeguard products such as produce, medical supplies, industrial chemicals, and other temperature / humidity sensitive products.

Laboratories and Industrial Plants: Ensure that ambient temperature and humidity levels remain stable 24 hours a day to keep your equipment in optimal working condition. Use external current and voltage sensors with transmitters.

Greenhouses and Cold Rooms: Record fluctuations in temperature and humidity over time—download readings to your computer to graph your data. These loggers let you discover potential problems before they become costly.

Museums and Libraries: Make sure conditions aren't harmful to valuable archives and collections.

• Specifications •

Mode	Temperature	Humidity (RH/TempLog only)
Range	-30 to 50°C / -22 to 122°F	0 to 100% RH
Resolution	0.5°C / 1°F	0.5%
Accuracy	±0.6°C / ±1.1°F	±3% from 0 to 90% RH at room temp; ±6% from 90% to 100% RH

Memory: stores up to 16,000 measurements

Output:

Infrared: IRDA (infrared data association) interface to printer or computer with IRDA port

RS-232: Cable connection to your computer (order cable/software package separately below)

Sampling rate: selectable via software from once per 10 seconds to once per two hours

Software: Required to download readings to a computer and to set sampling rate (order software separately below). Software can be used with multiple loggers. Software is compatible with Windows 3.x and Windows 95/98/NT/ME.

Display: two digit LCD display, %"H, with mode indicators

Housing:

TempLog: IP65 rated
RH/TempLog: IP60 rated

External sensor: optional. See "Remote Sensors" below

Power: internal lithium battery, 3.6 V TL5101. Battery life is two years (may be less with external sensor)

Dimensions: 2.8" dia x 0.9"D (7.2 cm dia x 2.3 cm D)

Weight: 0.2 lb (0.1 kg)

• Ordering Information •

Loggers

Shipping weight for loggers and logger kits 2 lbs (0.9 kg).

WD-35710-00 OAKTON TempLog

WD-35710-10 OAKTON RH/TempLog

WD-35710-50 Software/serial cable. Software is required to download readings to a computer and to set sampling rate.

Software can be used with multiple loggers. Cable is 8.5 ft (2.5 m) long and connects to computer 9-pin serial port

WD-35710-60 OAKTON TempLog kit, includes TempLog, software and serial cable.

WD-35710-62 OAKTON RH/TempLog kit, includes RH/TempLog, software and serial cable.

WD-35710-65 Replacement battery

Infrared printer

This infrared printer is ideal for on-site documentation. Transfer data by infrared light without the use of cables—just position the OAKTON logger IRDA port near the printer's IRDA port.

WD-37455-70 Infrared printer includes one roll of paper and four AA batteries. Shpg wt 1.4 lbs (0.6 kg)

WD-35615-07 AC adapter, 9 VDC to 110 VAC. Shpg wt 1.3 lbs (0.6 kg)

WD-35615-08 AC adapter, 9 VDC to 220 VAC. Shpg wt 1.3 lbs (0.6 kg)

WD-37455-82 Replacement printer paper, 2.25"W x 80 ft L. Pack of three rolls

Remote sensors

Use remote sensors with Oakton loggers to display and log additional external readings. Use temperature sensor to measure remote temperature in air, liquids, soil and more. Current, voltage, and contact sensors can be scaled to match range and units of your transmitter or instrument output. Each sensor includes 8.2 ft (2.5 m) cable.

WD-35710-70 Temperature sensor. Range -50 to 100°C. 3.25" L x 0.25" dia stainless steel probe

WD-35710-72 Current sensor. Range 0 to 20 mA

WD-35710-74 Voltage sensor. Range 0 to 10 V

WD-35710-76 Contact sensor

• ORDER FROM •