



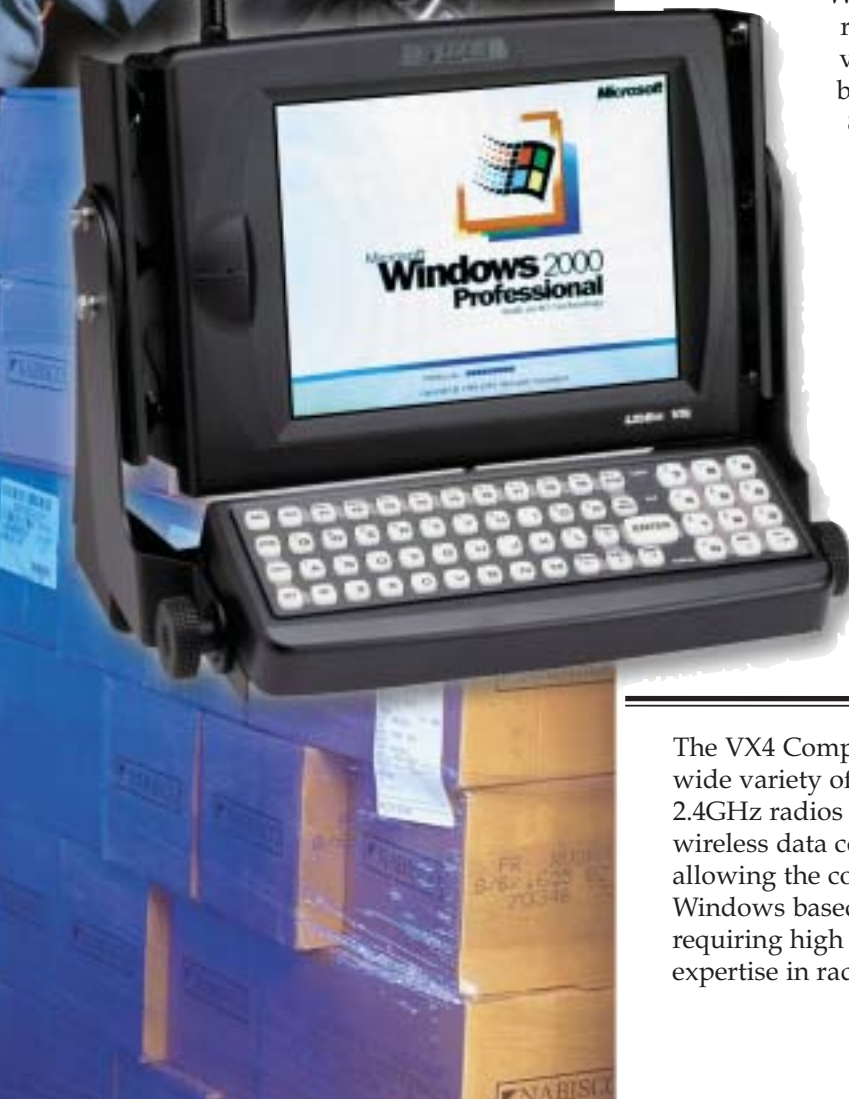
VX4 Vehicle-Mounted Computer

DESIGNED FOR MAXIMUM FUNCTIONALITY

LXE continues its tradition of excellence with the VX4 vehicle-mounted computer. The culmination of almost three decades of mobile computing experience is very evident with the attention to detail in the design of the VX4. Keeping the end-user in mind, the VX4 was designed for maximum functionality as a full-screen Windows®-based computer with an Intel® Pentium class

266MHz MMX processor, a 10.4" color TFT SVGA display with touch screen interface capabilities, and a 10GB internal hard drive. The VX4 has the power and capability to support multiple applications, including those accessed through a web browser, to enhance information flow across the supply chain. The VX4 provides reliable performance for a broad array of wireless WAN, LAN, and mobile computing applications.

A RUGGED PC WITH UNLIMITED OPTIONS



With an enclosure rating of IP66 and vibration testing based on MIL STD 810D, the VX4 computer is designed to operate in harsh environments that include factors such as extended temperature ranges from -20°C to 50°C, vibration, dust, dirt, and rain.

The VX4 is manufactured with a

combination of high impact black polycarbonate/polyester blended plastics and aluminum casting. The optional LXE rugged QWERTY keyboard is backlit for added visibility and includes large keys for gloved hand operation. The keyboard can also be mounted remotely or integrated in conjunction with the unit's mounting bracket for added space savings, and its keys are chemically coated for resistance to scratches and abrasions. The industrial ergonomics of the VX4 Vehicle Mounted Computer ensure rugged durability in conjunction with PC functionality.

HIGH-SPEED
WIRELESS SOLUTIONS

The VX4 Computer supports a wide variety of popular 802.11b 2.4GHz radios for high-speed wireless data communications, allowing the computer to run Windows based applications requiring high bandwidth. LXE's expertise in radio technology, on-

going customer support, a full range of barcode scanners and accessories, and equipment compatibility ensure performance, durability, and maximum uptime for your system and supply chain management requirements.



TECHNICAL SPECIFICATIONS

VX4 Vehicle-Mounted Computer

Processing & Memory

266MHz Intel® Pentium MMX
64MB SDRAM
128MB SDRAM Optional
4MB Video Memory

Operating Systems

Windows® 98
Windows® 2000

Keyboard Options

LXE QWERTY Rugged Keyboard
Integrated Mounting Bracket
Remote Mounting Bracket
Remote Standard Keyboard (Cherry)
Remote NEMA Keyboard (Storm)

Display

10.4" TFT Color Display
SVGA - 800 x 600
VGA - 640 x 480 (Configurable)
120° viewing angle
350 NIT
Touch Screen

Power Supply & Management

10-60V Internal Power Supply
120 - 240 AC Power Adapter
Coin Cell Battery Backup

Interfaces

(2) RS-232 Serial Ports (DA-9)
(1) USB Port
(1) PS/2 Keyboard Port
Audio / Microphone Port
Internal Speaker / Beeper

Expansion

PCMCIA V.2.1 slot
(2) Type II or (1) Type III
Compact Flash slot for ATA drives

Hard Drives

Standard Temperature
10GB ATA/IDE Internal Rotating Drive
1.0GB ATA/IDE Solid State Compact Flash
1.0GB ATA/IDE Solid State PCMCIA
Extended Temperature
1.0GB ATA/IDE Solid State PCMCIA, LT
512MB ATA/IDE Solid State PCMCIA, LT

Radio Card Support - PCMCIA

2.4 GHz DSSS (802.11b)
Up to 11 Mbps at 2.4GHz
35 mW at 2.4GHz
2.4GHz FHSS (OpenAir)
1.6Mbps at 2.4GHz
100mW at 2.4GHz

Enclosure

Combination High Impact Black polycarbonate/polyester blend plastic and aluminum casting
Size
9.0" x 12.0" x 3.9"
(22.9cm x 30.5cm x 9.9cm)
Weight
7.80lbs (3.538 kg)

Environmental

Operating Temperature Range
0°C (32°F) to 45°C (113°F)
Extended Option: -20°C (-4°F) to 50°C (122°F)
Storage Temperature Range
-10°C (14°F) to 70°C (158°F)
Extended Option: -25°C (-13°F) to 70°C (158°F)
Humidity
5% to 95% RH non-condensing
Ingress Protection Enclosure Rating
IEC 60529 compliant to IP 66
Sealed against water jet streams and dust
Vibration Testing
Based on MIL STD 810D

Approvals

Emissions (EMI)
FCC Part 15 Subpart B, Class A
Industry Canada ICES-003 Class A
EN 55022, Class A (CISPR22), AS/NZ 3548
Immunity (EMC)
EN 55024:1998
Safety
UL 60950, CSA C22.2 No. 60950, EN 60950, IEC 60950
Radios separately approved to:
FCC Part 15, Subpart C
Industry Canada RSS 210, RSS 102
RSS 139 and/or 210
R&TTE Directive: EN 300 328, EN 300 826, EN 60950



Switzerland • OPAL Associates AG • Motorenstrasse 116 • CH-8620 Wetzikon • Telefon +41 (0)1 931 12 22 • Telefax +41 (0)1 931 12 20 • Email info@opal.ch • OPAL Associates SA • Avenue des Boveresses 54 • Case postale 29 • CH 1000 Lausanne 21 • Telefon +41 (0)21 653 95 00 • Telefax +41 (0)21 653 95 02 • Email info@opalsa.ch • Germany • OPAL Associates GmbH • Lohnerhof-Str. 2 • D-78467 Konstanz • Telefon +49 (0)7531 813 000 • Telefax +49 (0)7531 813 00 99 • Email info@opalgmbh.de • OPAL Associates GmbH • Osterholder Allee 2 • 25421 Pinneberg • Telefon +49 (0)4101 787 615 • Telefax +49(0)4101 787 616 • Email hamburg@opalgmbh.de • Austria • OPAL Associates GesmbH • Vorarlberger Wirtschaftspark • A-6840 Götzis • Telefon +43 (0) 5523 58833 • Telefax +43 (0)5523 521569 • Email info@opalgmbh.at