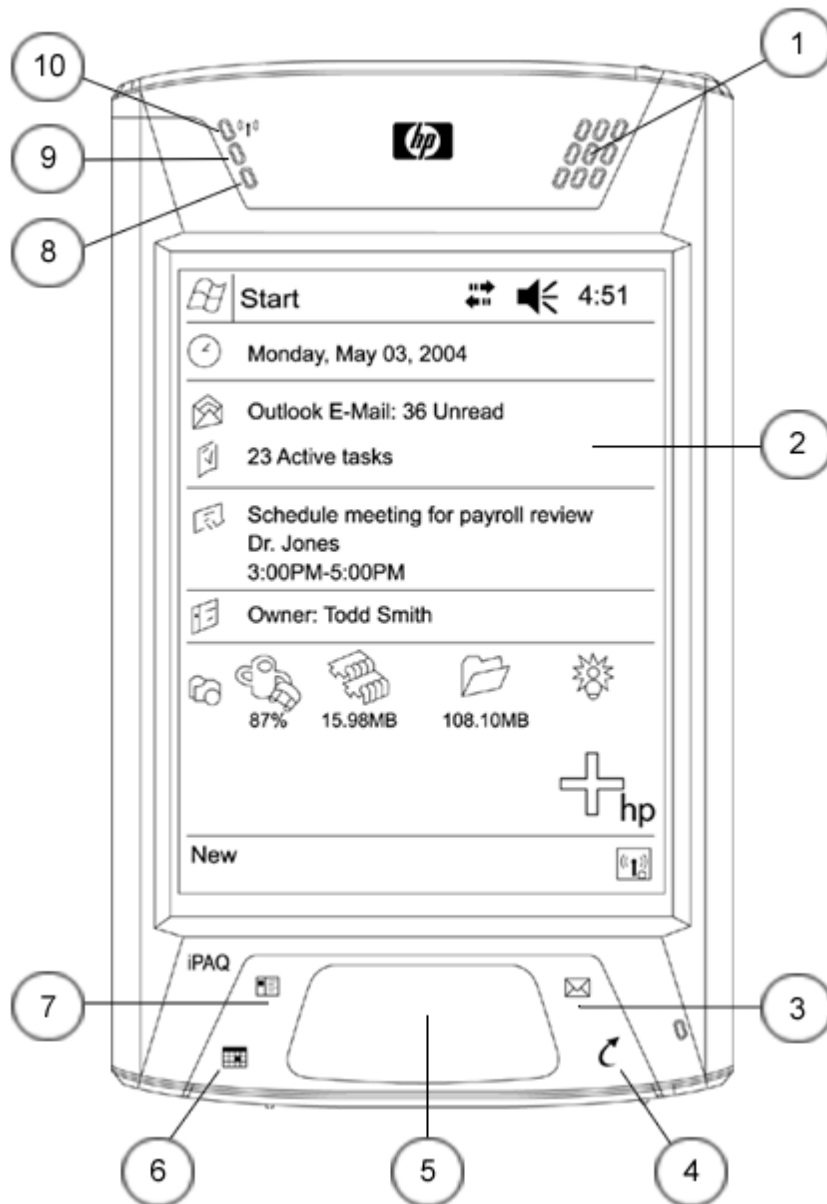
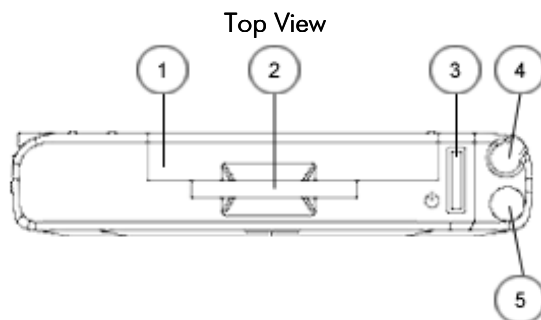


Overview

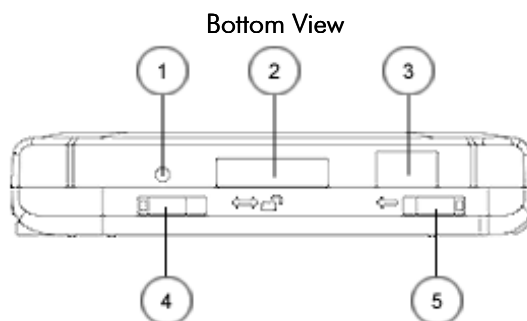


- | | |
|------------------|-------------------------------|
| 1. Speaker | 6. Calendar Button |
| 2. Color Display | 7. Contacts Button |
| 3. Inbox Button | 8. Light Sensor |
| 4. iTask Button | 9. Charging/Notifications LED |
| 5. Touchpad | 10. Wireless LED |

Overview



- | | |
|---------------------------------------|-------------------|
| 1. Compact Flash (CF) Expansion Slot | 4. Stylus |
| 2. Secure Digital (SD) Expansion Slot | 5. Headphone Jack |
| 3. Power Button | |



- | | |
|---------------------------------------|-------------------------|
| 1. Reset Button | 4. Battery Door Lock |
| 2. Activesync Connector | 5. Battery Door Release |
| 3. Fast Infrared Transmitter/Receiver | |

At A Glance

- Stunning 4" Transflective VGA TFT color display, Landscape and Portrait display modes
- Intel® PXA270 Processor 624 MHz
- Integrated touchpad navigation with mouse-like cursor
- Integrated WiFi (WLAN 802.11b¹)
- Integrated Bluetooth®¹ wireless technology
- Integrated IrDA FIR (fast infrared)
- HP ProtectTools security application
- Pre-installed Pocket Informant 5.0 personal information management (PIM) application
- Integrated SDIO and CF Type II expansion slots
- Magnesium-alloy body for additional durability
- Microsoft® Windows Mobile™ 2003 Second Edition software for Pocket PC (Premium Edition)
- Removable/rechargeable 1800 mAh Lithium-Ion battery
- Pocket versions of familiar applications like Microsoft® Outlook®, Word and Excel

NOTE 1: A standard WLAN infrastructure, other Bluetooth-enabled devices, separately purchased equipment, and a service contract with a wireless airtime provider may be required for applicable wireless communication. Wireless Internet use requires a separately purchased service contract. Check with service provider for availability and coverage in your area.

Standard Features

Models

HP iPAQ hx4700 Pocket PC – 128 MB ROM, 64 MB SDRAM, WLAN and Bluetooth

FA282A#ABA – US Commercial, English

Processor	Intel® PXA270 Processor 624 MHz NOTE: Intel's processor numbering is not a measurement of higher performance.
------------------	---

Memory	User Available Memory 192 MB total memory; (128 MB Strata Flash ROM and 64 MB SDRAM) Up to 135 MB user available memory (includes 80 MB iPAQ File Store)
---------------	--

Display	Type 4" Transflective type VGA TFT color; LED backlight with power save mode Modes Portrait and Landscape Number of Colors 64K color (65,536 colors) Touch Screen Yes Resolution (W x H) 480 x 640 pixels Dot Pitch 0.126 mm x 0.126 mm Viewable Image Size 4.0 in (101.6 mm)
----------------	--

Hardware Buttons/Reset Buttons	One power button, one Voice Record button, one Soft Reset button, Contacts button, Inbox button, Mail button and iTask button. (All buttons are programmable except for Reset button).
---------------------------------------	--

Stylus	One – Included in the box
---------------	---------------------------

Audio	Integrated microphone, speaker and one 3.5 mm stereo headphone/headset jack, MP3 stereo (through audio jack and speaker)
--------------	--

Indicators	Power Button Charging and Notification indicators Blinking green – notify Blinking amber – charging Solid amber – full charge LED – Bluetooth/WLAN Solid blue LED – wireless radio(s) ON
-------------------	--

Cradle Interfaces	Connector 1 – 22 pin USB 2.0 Client Cable 1 USB cable connects to PC DC Power jack connector for AC/DC Adapter connection 1 (may vary by model)
--------------------------	--

Standard Features

Other interfaces	IrDa	SIR and FIR Supported
	USB 2.0 Client	Supported via HP standard 22 pin cradle interface
	Serial	Supported via HP standard 22 pin cable interface (cable must be purchased separately)

SD Slot Support 1-bit and 4-bit SD/SDIO/MMC type memory standard

CF Slot 1 Type II

Power Supply	Battery	Removable/Rechargeable 1800 mAh Lithium-Ion user swappable battery. Optional extended removable/rechargeable 3600 mAh Lithium-Ion battery available for purchase (www.hp.com/go/ipaqaccessories)
	AC Power	AC Input: 100~240 Vac, 50/60 Hz, AC Input current: 0.3 A max Output Voltage: 5Vdc (typical), Output Current: 2A (typical)

NOTE: Battery run time varies based on the usage pattern of an individual user and the configuration of the handheld. Use of internal wireless capabilities and backlight will significantly decrease battery run time.

AC Adapter	Dimensions (H x W x D)	3 x 1.9 x 1.8 in (76 x 48 x 44 mm - including prongs), (may vary by model)		
	Cord Length (approx.)	6 ft (1.83 m)		
	Power Supply Ratings	Voltage Range	100 to 240 V Switching	
		Input Current	0.3 Aac	
		Input Frequency	50 to 60 Hz	
		Output Voltage	5 VDC	
		Output Current	2 Amp	

System Unit	Dimensions (H x W x D)	5.17 x 3.03 x .59 in (131 x 77 x 14.9mm)	
	Body	Magnesium-alloy	
	Weight	186.7 g (6.6 oz) (w/o cover & cards)	
	Operating Temperature	32° to 104° F (0° to 40° C)	
	Storage Temperature	-4° to 140° F (-20° to 60° C)	
	Operating Humidity	90% RH	
	Regulatory Marks	Electrical	FCC Class B, UL or CSA NRTL

Design Features 4 shortcut programmable buttons, Navigation Touch-pad, Touch-sensitive display for stylus or fingertip, Voice record button, Microphone and Speaker on front-side of unit

Operating System Microsoft® Windows Mobile™ 2003 Second Edition software for Pocket PC (Premium Edition)
Pocket versions of Microsoft software are included (Outlook, Word, Excel and Internet Explorer for Pocket PC)

Standard Features

Operating System Applications Powered by Microsoft® Windows Mobile™ 2003 Second Edition software for Pocket PC (Premium Edition) Calendar, Contacts, Tasks, Voice Recorder, Notes, Pocket Word (with Spellchecker), Pocket Excel, Pocket Internet Explorer, Windows Media Player 9 (MP3, audio and video streaming), Calculator, Solitaire, Jawbreaker, Inbox (with Spell Checker for email), File Explorer, Pictures, Terminal Services Client, VPN Client, Infrared Beaming, Clock, Align Screen, Memory, Volume control, ClearType Tuner (except for Asian languages)

In the box HP iPAQ hx4700 Pocket PC, AC adapter, USB Desktop Synchronization Cradle, Plastic Flip Cover, Stylus, Getting Started Guide, and HP iPAQ Pocket PC Companion CD.

Additional Software and links Bluetooth Phone Manager
Clearvue Suite (PowerPoint and PDF)
HP ProtectTools secured by Credant Technologies
Microsoft ActiveSync 3.7.1 (Desktop device synchronization)
Microsoft Reader eBooks
Outlook 2002
Personal Dockware
Pocket Informant 5
Pocket Panel Lite
Links to Microsoft websites for additional downloadable applications (some programs may require purchase of additional desktop software to utilize Pocket PC versions)

HP Exclusive Applications Bluetooth Manager
HP Mobile Printing: print to network and Bluetooth printers without any additional software.
HP ProtectTools secured by Credant Technologies
iTask Task Switcher
iPAQ Wireless: utility to manage wireless connections
iPAQ File Store: non-volatile storage in flash ROM
iPAQ Backup: utility for Backup/Restore to Main Memory, Memory Card or iPAQ File Store
HP Image Zone for Pocket PC: application to view and print pictures and create slide shows
Utilities: Self Test, iPAQ Audio, Power Status

Companion CD from HP APPLICATIONS

Full Versions

Active Sync
Adobe PDF Viewer for Pocket PC
Adobe Reader for PC
Afarria Management
Altiris Express
Flash Player for Pocket PC
Outlook 2002 Desktop

CD LINKS

Trial Versions

Audible Player
Cadenza (Lotus Notes client)
File Explorer 2003
ListPro
Presenter-to-go
Vindigo 2.0

Standard Features

AvantGo
 Call Manager
 ClearVUE Suite (Word and Excel)
 Handango
 iPAQ backup upgrade
 Media Player Desktop
 Microsoft Games
 SoftPhone
 VtGo

Additional Documentation

Safety and Comfort Guide on PDF, and User Guide on PDF

NOTE: Programs may vary based on model. Some programs are accessed through CD links to download web sites.

Service and Support

One-year parts and labor in most regions; 90 days technical support for software in most regions. Additional offers may vary by region.

WLAN Specifications^{1,2}

Technology	High-speed wireless access to the Internet, email and corporate data
RF Network Standard	IEEE 802 Part 11b (802.11b)
Frequency Band	2.4000 to 2.4835 GHz 2.4465 to 2.4835 GHz (France) 2.4000 to 2.497 GHz (Japan)
Antenna type	Embedded Antenna
Security	WEP 64/128-bit compliant to IEEE 802.11 Compliant to 802.1X (EAP-TLS, PEAP) LEAP, WPA
Network Architecture Models	Ad-hoc (Peer to Peer) Infrastructure (Access Points Required)
Modulation Technique	Direct Sequence Spread Spectrum
Modulation Schemes	DBPSK, DQPSK, CCK
Receiver Sensitivity - Packet Error Rate (8E-2)	11 Mbps: <-80 dBm 5.5 Mbps: <-82 dBm 2 Mbps: <-86 dBm 1 Mbps: <-89 dBm
Maximum Receive Level	-10 dBm (1/2/5.5/11 Mbps)
Output Power (approximately)	15 dBm
Power Management	Radio On/Off control through Microsoft Connection icon Power Save mode available in Power Settings
Power Consumption	Transfer mode: < 300 mA, average Receive mode: < 200 mA, average
Power Saving Option	802.11 Compliant Power Saving
Media Access Protocol	CSMA/CA (Collision Avoidance) with ACK
Protocols Supported	TCP/IP IPX/SPX UDP
Operating Distance	Typical 300 feet – Open sight

Standard Features

Certifications	All necessary regulatory approvals for countries we support including: WECA Wi-Fi approval FCC (47 CFR) Part 15C, Section 15.247&15.249 ETS 300 328, ETS 301 489-6 Low Voltage Directive IEC950 UL, CSA, and CE Mark
-----------------------	---

NOTE:

¹ A standard WLAN infrastructure, other Bluetooth-enabled devices, and a service contract with a wireless airtime provider may be required for applicable wireless communication. Wireless Internet use requires a separately purchased service contract. Check with service provider for availability and coverage in your area. Not all web content available.

² Wireless access point required and is not included. Availability of public wireless access points limited. Wireless Internet use may require separately purchased Internet service contract.

Bluetooth® Specifications¹

Technology	High-speed, low-power, short-range wireless communication with other Bluetooth devices
Bluetooth specification	1.2 compliant (2.4-GHz Industrial Scientific Medical Band)
System interface	High-speed UART processor interface
User Interface	Bluetooth Manager
Device type	Class II device; up to 4 dBm transmit, typical 10 meter range
Power	3.3V ±5% Peak current <ul style="list-style-type: none"> • typical TX current at approximately 30 mA • typical RX current at approximately 50 mA
Receiver sensitivity	-83 dBm
Regulatory standards	R&TT#-EN 300 328 and EN 300 826, UL 1950, CB Safety Scheme inclusive of EN 60950 and IEC 950, FCC Part 15 subpart C, Canadian, CE
Profile Support	General Access Profile Service Discovery Application Profile Serial Port Profile Generic Object Exchange Profile File Transfer Profile Dial-Up Networking Profile LAN Access Profile Object Push Profile Personal Area Networking Profile Basic Printing Profile Hard Copy Replacement Profile (printing) Hands Free Profile (HF)

Standard Features

Usage Models

Service Discovery

Determine what Bluetooth devices are within range and support authorization

File Transfer

File and directory browsing and navigation on another Bluetooth device.

File copying

Object manipulation – including add, delete, create new folders etc.

Serial Port

Synchronization between PDAs and PCs

Dial Up Networking

Wireless link to WAN thru Bluetooth enabled cell phone¹

Agnostic to WAN technology

Send/receive SMS messages

LAN Access

Wireless link to Corporate LAN using Bluetooth and appropriate Bluetooth access point¹

Corporate email, network neighborhood, access to LAN applications, file transfer, ftp, Internet browsing, etc, using TCP/IP¹

Access the Internet by connecting to your desktop or notebook over Bluetooth and using its network connection¹

Generic Object Exchange and Object Push

Exchange business cards, tasks, documents, appointments and more¹

Personal Area Networking

Collaborate, chat, play games, exchange data¹

Adhoc peer to peer networking¹

Basic Printing and Hard Copy Replacement Profiles

Print to any HP Bluetooth enabled printer without the need for cables or specific print drivers

Certifications

All necessary regulatory approvals for countries supported including:

Bluetooth logo (FCC (47 CFR) Part 15C, Section 15.247&15.249 ETS 300

328, ETS 301 489-1/17 Low Voltage Directive IEC950 UL and CE Mark

NOTE: ¹ A standard Bluetooth wireless infrastructure and/or other devices enabled with Bluetooth may be required for applicable wireless communication.

Options

NOTE: Optional accessories are available at additional cost see <http://www.hpshopping.com/ipaqaccessories> for details.

Memory/Storage	128 MB SD Memory Card	FA135A#AC3
	256 MB SD Memory Card	FA136A#AC3
	512 MB SD Memory Card	FA184A#AC3
	1 GB SD Memory Card	FA283A#AC3
Power	1800 mAh Lithium Standard Battery	FA257A#AC3
	3600 mAh Lithium Extended Battery	FA258A#AC3
	Automobile Adapter	FA125A#AC3
	Charger Adapter	FA133A#AC3
	AC Adapter	FA130A#ABA
Synchronization	Desktop Cradle	FA260A#AC3
	AutoSync Cable (USB and Serial)	FA122A#AC3
Input Devices	Stylus Three-pack	FA261A#AC3
	Foldable Keyboard	FA118A#ABA
	Thumb keyboard	FA302A#AC3
	SDIO Camera (Photosmart Mobile Camera)	FA185A#AC3
Navigation	iPAQ Navigation System – (U.S. & Canada only)	FA196A#ABA
Headphones	Bluetooth Stereo Headphones	FA303A#AC3
Cases	Leather Belt Case	FA350A#AC3
	Custom Cases: to view and order go to: http://www.casesonline.com	

Options

HP Care Pack Services	9x5 Next Day Exchange Service - 1 Year	U7844E
	9x5 Next Day Exchange Service - 3 Years	U7845E
	9x5 Pickup & Return Service - 2 Years	U7849E
	9x5 Pickup & Return Service - 3 Years	U7846E
	9x5 Pickup & Return Service - 4 Years	U7852E
	9x5 Pickup & Return Post Warranty Service - 1 Year	U6572PE
	9x5 Pickup & Return Coverage for Handhelds with Accidental Damage Protection Service - 1 year	U7847E
	9x5 Pickup & Return Coverage for Handhelds with Accidental Damage Protection Service - 3 year	U7848E
	9x5 Next-Business-Day Exchange with Off-Site Accidental Damage Protection Service - 1 Year	365705-001
	9x5 Next-Business-Day Exchange with Off-Site Accidental Damage Protection Service - 2 Years	365706-001
	9x5 Next-Business-Day Exchange with Off-Site Accidental Damage Protection Service - 3 Years	365707-001



HP iPAQ Pocket PC is a Microsoft® Windows® Powered Pocket PC

For more information on HP iPAQ Pocket PC, visit our website at <http://www.hp.com/go/iPAQ>.

© Copyright 2005 Hewlett-Packard Development Company, L.P. The information contained herein is subject to change without notice. The only warranties for HP products and services are set forth in the express warranty statements accompanying such products and services. Nothing herein should be construed as constituting an additional warranty. HP shall not be liable for technical or editorial errors or omissions contained herein. Microsoft, Windows, the Windows Logo and ActiveSync are registered trademarks or trademarks of Microsoft Corporation in the United States and/or other countries. Intel is a registered trademark of Intel Corporation in the U.S. and/or other countries.