



# DATALOGIC

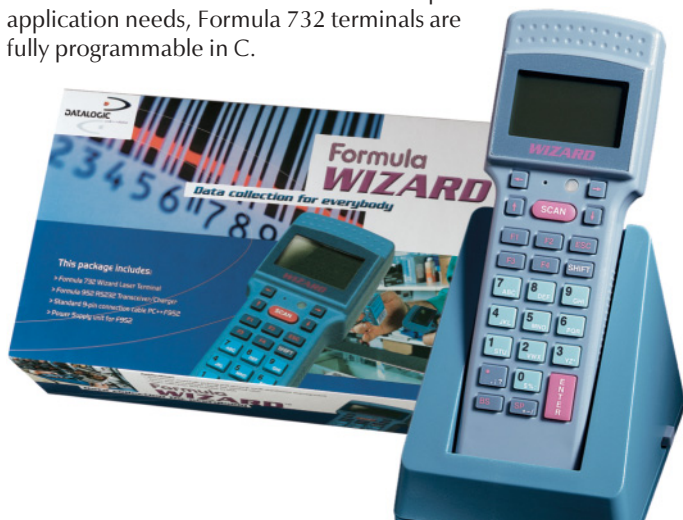
The first and largest European manufacturer of bar code readers, Datalogic is now one of the world's leaders, with a comprehensive range of CCD and laser scanners as well as batch and RF portable data terminals and associated software tools. Datalogic is quoted on the Milan stock exchange and boasts ISO9001 quality certification. Companies using Datalogic products include AEG, Esso Petroleum, FedEx, Johnson & Johnson, Peugeot-Citroen, Siemens and the United States Postal Services.

## Datalogic Formula Wizard packaged solution

- complete entry-level data collection solution
- ideal for small businesses and retailers
- includes terminal, transceiver/charger, PSU
- entry-level software free to download

For the vast majority of small businesses and retailers, the complete Formula Wizard package represents a simple and cost-effective solution for entering the world of bar code data acquisition. At the heart of the package is Datalogic's Formula 732 portable laser scanning terminal. Fast and reliable in reading the most common bar code symbologies, it has an alphanumeric keypad and a large graphic high contrast display. The package includes the Formula 952 transceiver/charger for RS232 serial data communications with the host PC, together with serial cable and UK power supply unit.

By using Datalogic's EasyGen software, developers can quickly build personalised applications in Windows. The EasyGen Demo Version can be downloaded free of charge from [www.datalogic.com](http://www.datalogic.com), and contains five ready-to-use applications covering the most common data collection procedures. Alternatively, the Formula Wizard + EasyGen bundle includes the full version of the software. For more complex application needs, Formula 732 terminals are fully programmable in C.



### Order codes – DATALOGIC FORMULA WIZARD

| Item  | Order code   |
|---|--------------|
| F732 Wizard Package                         | DL-941404004 |
| Wizard Plus Easygen - Full Version (Bundle) | DL-941404014 |
| Battery Kit For F730-734-B                  | DL-94ACC4220 |
| Set Of Batteries For F730-734-B (5 PCS)     | DL-94ACC4230 |
| NiMH Battery Kit For F734-B & F734-E        | DL-94ACC1110 |
| Set of NiMh Batteries For F734-B & F734-E   | DL-94ACC1120 |
| Rubber Protection Boot                      | DL-94ACC4650 |
| Leather Holster For F732 Wizard             | DL-94ACC4140 |
| Funcional Case For F73X With Swivel         | DL-94ACC1266 |
| Belt Holster For F6XX/F73X With Swivel      | DL-94ACC1268 |

## Datalogic Formula Wizard specifications

### Operating system

- Datalogic proprietary

### Microprocessor

- 8-bit CMOS

### Memory

- 64Kb Flash for application;  
512Kb RAM for data

### Display

- graphic high contrast LCD  
4 lines x 16 characters

### Keypad

- alphanumeric, 25 silicon rubber keys

### Signal to operator

- 2-colour LED; piezoelectric buzzer;  
programmable frequency and duration

### Clock and calendar

- quartz controlled RTC  
programmable date and time

### Interface

- infrared between terminal and transceiver/charger; RS232 between transceiver/charger and host PC

### Battery

- 250 mAh NiCad rechargeable  
18 hour life reading every 45 seconds

### Scanner

- laser bar code scanner: 36 scans/sec
- range: 3 to 70cm (1.2" to 27.6")
- laser classification: VLD – class II
- supported symbologies: EAN-8, EAN-13, UPC/A-E, 2/5 family, Code 128, Code 93, Code 2/7, Code 3/5, 3/9 family, MSI, DELTA A IBM

### Environment

- operating temperature: 0°C to 50°C
- resists drops onto concrete
- protected against dust and water

### Dimensions and weight

- size: 165mm x 56mm x 32mm
- weight: approx 184g



*mobile@work* is the name of Datalogic's concept for a line of rugged portable data terminals designed for demanding industrial applications. These terminals are based on PC-like architecture and designed to be radio-ready, supporting the most widespread mobile standards such as 802.11b and OpenAir, depending on the PC card used. *mobile@work* units include terminal emulation connectivity for OS/400, Unix, Microsoft Windows platforms, including the most popular ERM systems such as SAP R/3. They also provide RS232 serial data communications and an IrDA port with mobile printers compatibility – Datalogic supplies a universal driver compliant with most mobile printers so that bar code labels and notes can be printed by the user in the field without cable links.

*mobile@work* terminals can be supplied with both 802.11b and OpenAir WLAN connectivity, such as PC-card, on board. Additional available connectivity tools include DL TN-Link, based on Active\_X architecture, which enables the programmer to manage the mobile unit from the main application, and DL Web-Link, based on web technology, allowing communication between the database and mobile unit through a standard internet information server. Scanning options include high performance, long range and 2D readers, while single charging/comms cradles and multiple battery chargers are offered for each terminal.



## Datalogic DL8600 Kyman rugged DOS terminal

- batch and 802.11b RF models
- ruggedised IP54 build
- choice of laser – standard, LR and 2D
- free terminal emulation for AS400 and UNIX

The DL8600 Kyman is a truly rugged DOS-based terminal with advanced bar code scanning, data processing and communications features. It has been designed to provide the highest productivity and comfort in demanding environments, to link users to data and to each other in transport and logistics applications such as warehousing, docks, yards and on the road. The unit has a backlit, high-contrast 1/8 VGA display and full 42-key rubber silicon keypad.

Sealed to IP54 against dust and water ingress, it can withstand multiple 1.5m drops to concrete.

Includes all standard **mobile@work** features as described above.



## Datalogic DL9600 Viper rugged DOS terminal

- ultra-rugged IP65-rated construction
- built tough to withstand 1.8m drops
- well balanced, pistol grip design
- generous 1/4 VGA display
- all Datalogic **mobile@work** features

The DL9600 Viper is a tough, full-featured pistol grip DOS terminal designed for the harshest industrial environments, completely protected from mechanical shocks and sealed against water and dust penetration. The Viper has a 1/4 VGA, backlit display with 240 x 320 pixel resolution. The unit has a modular build, allowing keypad format, scanning engine and WLAN PC card to be specified to meet the requirements of the application. The versatile radio-ready design of **mobile@work**

terminals means that the Viper is equally suited to new or existing RF installations.



### Datalogic DL9600 Viper specifications

As for DL8600 except:

#### Display

- graphic high contrast backlit LCD, 240 x 320 pixels
- KB-controlled contrast
- 24 characters x 21 lines with default font

#### Keypad

- 48-key alphanumeric or 32-key numeric, silicon rubber



#### Dimensions and weight

- size: 235 x 105 x 180mm
- weight inc batteries and WLAN PC card: 820g approx.

## Datalogic DL8600 DOS terminal specifications

### Operating system

- Datalight ROM-DOS 6.22
- Datalogic proprietary BIOS

### Microprocessor

- 32-bit AMD486, up to 32MHz

### Memory

- 2Mb or 8Mb RAM
- 2Mb or 8Mb Flash

### Display

- graphic high contrast backlit LCD, 160 x 240 pixels, 16 levels of grey
- KB-controlled contrast
- 20 characters x 20 lines with default font

### Keypad

- 42-key alphanumeric silicon rubber

### Power

- removable pack with rechargeable Li-Ion batteries
- supercapacitor to back up system RAM during battery pack change
- lithium batteries to preserve set-up and data
- local connection for fast battery charging and serial communication

### Radio communications

- WLAN, 802.11b or OpenAir compliant
- antenna: internal with diversity option
- frequency range: country dependent, typically 2.4GHz to 2.5GHz

### Serial communications

- IrDA bi-directional port with mobile printers compatibility
- RS232 with data rate up to 115.2Kbps, including fast in-line battery charger

### Scanner

- laser bar code scanner standard
- light source: visible laser diode 650nm
- optional high performance, long range and 2D readers

### Environment

- operating temperature: -10°C to 50°C
- withstands multiple 1.5m drops to concrete
- IP54 protected against dust and water

### Dimensions and weight

- size: 227mm x 83mm x 60mm
- weight inc batteries and WLAN PC card: approx 480g

## Datalogic Viper CE rugged terminal

- Windows CE 3.0 operating system
- large colour high visibility touch screen
- choice of batch, wireless and wireless-ready models
- all Datalogic **mobile@work** features

The Viper CE is a Windows CE-based pistol-grip terminal included in the rugged mobile@work product line for industrial environments. It is designed for comfort during extended use, being lightweight and well balanced. The quarter-VGA high contrast colour touch screen is ideal for both indoor and outdoor use, in all ambient light conditions. Power comes from rechargeable, long-life li-ion batteries. The Viper CE is offered in batch versions, or with integrated 802.11b data comms, or radio-ready, where most WLAN PC cards can be used. *Specifications and order codes overleaf.*



### Order codes – DATALOGIC DL8600 RUGGED DOS TERMINAL

| Item   | Order code   |
|--|--------------|
| DL8600 Batch Portable Terminal 2+2MB             | DL-942501000 |
| DL8600/RF-3 Li Portable Terminal 802.11b - CISCO | DL-942601074 |
| B8600-Li Spare Lithium Ion Battery Pack          | DL-94ACC1130 |
| B8600-Nm Spare Ni-Mh Battery Pack                | DL-94ACC1140 |
| CC8600 Comms Cradle / 2 Battery Charger          | DL-94A151020 |
| DL FPS18 Power Supply (14VDC)                    | DL-94ACC4595 |





**Datalogic Viper CE terminal specifications**

**Operating system**

- Microsoft Windows CE 3.0

**Microprocessor**

- Intel StrongARM SA-1110 206MHz

**Memory**

- 64Mb RAM, 32Mb Flash

**Display**

- reflective TFT daylight readable colour display, 240 x 320 pixels, backlit, touch screen

**Keypad**

- 48-key alphanumeric or 32-key numeric, silicon rubber

**Power**

- removable pack with rechargeable Li-Ion batteries
- local connection for fast battery charging

**Radio communications**

- WLAN, 802.11b
- antenna: internal with diversity option
- frequency range: country dependent, typically 2.4GHz to 2.5GHz

**Interfaces**

- IrDA 1.0 integrated bi-directional port
- USB 1.1
- RS232 with data rate up to 115.2Kbps

**Scanner**

- laser 1D bar code scanner standard
- optional 1D long range or laser raster for 1D, PDF417 and stacked codes

**Cradle**

- single cradle with additional slot for spare battery; bi-directional comms through RS232/USB interface

**Battery charger**

- 4-slot multiple; recycling option

**Environment**

- operating temperature: -10°C to 50°C
- multiple 1.8m drops to concrete
- IP54 protected against dust and water

**Dimensions and weight**

- size: 235 x 105 x 180mm
- weight inc batteries and WLAN PC card: 820g approx.

**Datalogic DL9700 Rhino truck-mounted terminal**

- WLAN 802.11b (WiFi) standard
- MILSTD810/IP65 and vibration proof
- half-VGA LCD screen
- VFD version to -30°C operating temperature
- choice of cordless or tethered scanner
- free terminal emulation for AS400 and UNIX



Datalogic's Rhino is a range of vehicle terminals designed to be mounted on fork lift, pallet, hand trucks and most types of warehouse vehicle. Built to a military standard, the unit is fully industrialised and features a backlit keyboard and a choice of LCD or VFD display, the latter designed for cold store/freezer applications. The Rhino can be used for both keyboard data entry and/or bar code scanning. Datalogic's ruggedised Dragon hand scanner connects direct to one of the Rhino's two RS232 serial ports. Alternatively, a cordless version of the Dragon can be used. These options provide standard, long range and VHD bar code scanning.

**Datalogic DL9700 Rhino truck-mounted terminal**

**Operating system**

- MS DOS 7.1

**Microprocessor**

- AMD Elan SC400 @ 32MHz

**Memory**

- 2Mb RAM, 8Mb Flash

**Display**

- wide LCD (640 x 200 pixels) with backlight, or VFD (256 x 128 pixel)

**Keyboard**

- 57-key alphanumeric with constant illumination and audible key beep
- Universal ABCD layout to include IBM5250 and VT100/220 functions

**Radio communications**

- WLAN, 802.11b (WiFi)
- antenna: integrated or external, with diversity option
- frequency range: country dependent, typically 2.4GHz to 2.5GHz

**Serial communications**

- 2 x RS232-C
- COM2 with bar code option

**Power**

- internal wide range power supply (11-75 VDC), transient spike and overcurrent/voltage protected, reverse polarity protected, connects directly to vehicle battery

**Peripherals**

- tethered scanner: Dragon desk
- cordless scanner: Dragon mobile with Star-Modem

**Accessories**

- mounting bracket (included)
- power cable (included)
- serial cable (included)

**Environment**

- operating temperature: -30°C to 50°C (VFD display) 0°C to 50°C (LCD display)
- IP65 sealed against dust and water

**Dimensions and weight**

- size: 320mm x 250mm x 90mm
- weight: approx 3.5kg excluding mounting bracket



Above left: single cradle for Viper terminal; right: multiple battery charger

**Order codes – DATALOGIC VIPER CE and VIPER TERMINALS**

| Item   | Order code   |
|--|--------------|
| <b>Viper CE and Viper terminals</b>                |              |
| DL Viper CE-1112 HP RR Cisco Alpha/Numeric         | DL-943401001 |
| DL Viper CE-2112 LR, RR Cisco/S24 Alpha/Numeric    | DL-943401007 |
| DL9600/RF-3 Cisco 2.4GHz 802.11bNiMH HP Scan Eng   | DL-942804066 |
| DL9600/RF-3 Cisco 802.11B NiMH HP Scan TN Client   | DL-942804067 |
| DL9600/RF-3-LR Cisco 2.4GHZ 802.11B NiMH LR Scan   | DL-942804113 |
| DL9600/RF-3-LR Cisco802.11B NiMH LR Scan TN Client | DL-942804114 |
| DL9600/RF-1 Proxim 2.4GHZ Open Air/NiMh HP Scan    | DL-942804001 |
| DL9600/RF-1 Proxim Open Air/NiMh HP Scan TN Client | DL-942804003 |
| DL9600/RF-1-LR Proxim Open Air NiMh LR Scan Eng    | DL-942804080 |
| DL9600/RF-1-LR ProximOpen Air NiMh LR Scan TN CLT  | DL-942804082 |
| DL9600/RR Lucent Radio Ready NiMH HP Scan Eng      | DL-942804029 |
| DL9600/RR-LR Lucent Radio Ready NiMH LR Scan Eng   | DL-942804108 |
| DL9600/RR S24/Cisco Radio Ready NiMH HP Scan Eng   | DL-942804025 |
| DL9600/RR-LR S24/Cisco Radio Ready NiMH LR Scan    | DL-942804104 |
| DL9600 Viper - Batch Version 2+2MB                 | DL-942704000 |
| DL9600 Viper - Batch Version 2+2MB LR Scan Engine  | DL-942704008 |

**Viper accessories**

|   |              |
|---|--------------|
| DL B-9600-LI Battery Pack (Lithium Ion)       | DL-94ACC4661 |
| B-9600-NM Battery Pack (Nickel Metal Hydride) | DL-94ACC4660 |
| DL FPS18 Power Supply (14VDC)                 | DL-94ACC4595 |
| DL MBC-9600 4 Slot Battery Charger            | DL-94A154840 |
| DL CC-9600 Single Comms / Charging Cradle     | DL-94A154841 |
| CAB-4001 RS232 Cable (LEMO Conn)              | DL-94A054300 |
| Shoulder Strap (Pack of 5)                    | DL-94ACC1240 |
| DL CAB-406 for USB direct connection to PC    | DL-94A051001 |
| DL Kit Stylus Pen + Holder                    | DL-94ACC1273 |
| DL MBC-9600 4 Slot Battery Charger            | DL-94A154840 |
| DL Carry Case Viper with belt swivel clip     | DL-94ACC1272 |
| Functional Case For DL9600 (Pack of 5)        | DL-94ACC1220 |

**Order codes – DATALOGIC DL8700 TRUCK MOUNT TERMINAL**

| Item  | Order code   |
|---|--------------|
| DL8700/RF-3 VMT ABCD Keyboard 5250 - CISCO      | DL-942654031 |
| DL8700/RF-3 VMT ABCD Keyboard ANSI+VTHP-CISCO   | DL-942651000 |
| DL8700/RF-4 VMT ABCD Keyboard 5250 - Lucent     | DL-942654033 |
| DL8700/RF-4 VMT ABCD Keyboard ANSI+VT/HP-Lucent | DL-942651002 |



STAR-System™ is Datalogic's unique RF solution for mobile applications where the advantages of real-time wireless data communications are required but the budget won't stretch to an 802.11x system.

**STAR-System™ RF narrow band solution**

- affordable real-time wireless data comms
- seamless active roaming
- mix and match scanners and terminals
- no operator licence required
- easy development with supplied software tools

Datalogic's STAR-System offers a scalable solution for both simple applications, such as small warehouses with limited radio coverage, and complex projects, such as big plants requiring contiguous/non-contiguous large area coverage. Exploiting its unique seamless roaming capability, STAR-System allows operators to move in total freedom from office to office or through different departments/buildings with no need for constant logging in and out of the system.

The client server architecture, where each operation is driven by the RF device (client), combined with the CSMA/CA (carrier sense multiple access/collision avoidance) protocol type, boost overall performance so that STAR-System does not interfere with other RF equipment using the same frequency. A comprehensive range of Datalogic RF terminals and bar code readers is supported, and different types of device can be used on the same system. Please call about compatible products.

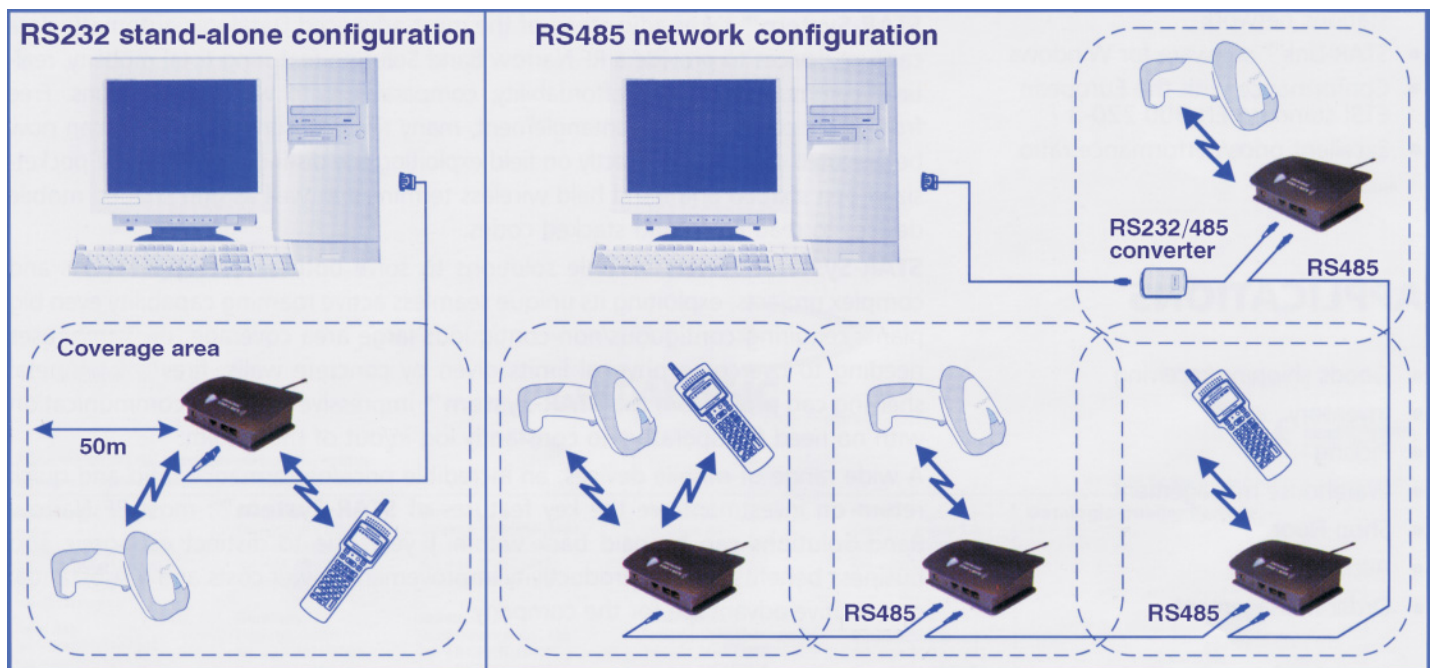
**STAR-System components**

The core component is **Stargate**, a narrow band radio base station that allows wireless data transmission between several Datalogic RF devices and a Windows PC-based host system. A single Stargate covers an area of about 8,000m<sup>2</sup> (50m radius) outdoors, depending on the environment, manages up to 2,000 mobile devices and supports up to 255 simultaneous active clients in real time. Each Stargate has RS232 and RS485 high speed serial interfaces for stand-alone or network configurations, and up to 16 Stargates can be daisy-chained via RS485 links, using a single power supply.

**STAR-Link** is a software tool for those familiar with object programming and Windows 95/98/2000/ME/NT environments. It enables developers to associate each RF device with its own host application, establishing a real-time, fast, reliable and cost effective wireless connection between mobile users and most common databases and ERP/WMS systems. The included software provides a variety of application examples, while STAR-Link software can also be downloaded free of charge direct from Datalogic's website [www.datalogic.com](http://www.datalogic.com).

**STAR-Modem** makes it possible for any wired RS232 device to become wireless: bar code printers, industrial weigh scales, and scanners can send/receive data to/from Datalogic's STAR-System in the same way as an RF wireless device. Among many devices, it supports Gryphon M and Dragon M bar code scanners. STAR-Modem is designed to perform reliably in demanding and harsh environments, including outdoors, and it can be mounted on forklift trucks without compromising its functionality, being resistant to vibrations and mechanical stress. Total mobility is assured by its automatic roaming function, small size and adjustable antenna.

**With easy site surveying, fast installation, low component cost, no licence requirements and ease of use, STAR-System delivers a quicker return on investment than other comparable wireless solutions. Call the sales team for further details on 0870 750 4034.**





## Datalogic STAR-System specifications

### Radio Communications

- radio frequency: 433.92 MHz
- radio power output: < 10 mW
- radio range: 50m (164')
- roaming: seamless active roaming
- access protocol: CSMA/CA
- data transfer rate: up to 19,200 baud
- conformity: European ETSI standard EN 300 220-3

### Mobile devices

- device type: Gryphon and Dragon RF bar code readers; Formula 725/RF and 734-E/RF mobile data terminals
- total: up to 2,000 mobile devices
- active: up to 255 mobile devices for each Stargate

### Serial communications

- stand-alone: single Stargate, RS232 serial connection (max length 15m), RS485 serial connection (max length 1200m), communication speed up to 38,400 baud

- network: up to 16 Stargate RF base stations supported on RS485 serial connection (max length 1200m), communication speed up to 38,400 baud, single PSU for multiple Stargate

### Software development

- data collection: STAR-Link (ActiveX for Windows 95/98/2000/ME/NT environments), ready to use Excel, Access, Visual Basic, C builder and Delphi application examples (free download from [www.datalogic.com](http://www.datalogic.com))

### Stargate specifications

- electrical: 16-bit CMOS microcontroller, 128kb program memory, 128kb data memory, 9/30 Vdc
- environmental: working temperature 0 to 50°C, storage temp -20°C to 70°C, humidity 90% non-condensing, protection class IP30
- mechanical: dimensions 141 x 111 x 52mm without antenna, weight 210g without fixing plate, LED functions indicator

| ID | Device ID | Data          | Mode    | Base station ID |
|----|-----------|---------------|---------|-----------------|
| 1  | 725       | 1234567890    | One Way | 1900            |
| 2  | 725       | 9876543210    | One Way | 1900            |
| 3  | 725       | 436789210     | Two Way | 1900            |
| 4  | 725       | 436789210     | Two Way | 1900            |
| 5  | 734       | 9C4804240     | Two Way | 1900            |
| 6  | 734       | 9C4804220     | Two Way | 1900            |
| 7  | 734       | 4902320179807 | Two Way | 1900            |
| 8  | 734       | 4902320193834 | Two Way | 1900            |
| 9  | 660       | 4006381333627 | One Way | 1900            |
| 10 | 660       | 4006381333634 | One Way | 1900            |
| 11 | 660       | 9876543210    | One Way | 1900            |
| 12 | 1500      | 9C4804240     | One Way | 1900            |
| 13 | 1500      | 4006381333634 | One Way | 1900            |
| 14 | 1500      | 4037976020888 | One Way | 1900            |
| 15 | 1500      | 1234567890    | One Way | 1900            |
| 16 | 1500      | 25555         | One Way | 1900            |
| 17 | 1500      | 1420565       | One Way | 1900            |
| 18 | 734       | 1234567890    | Two Way | 1900            |
| 19 | 734       | 3030139600915 | Two Way | 1900            |
| 20 | 734       | 9C4804240     | Two Way | 1900            |
| 21 | 734       | 023942389631  | Two Way | 1900            |
| 22 | 734       | 1234567890    | Two Way | 1900            |

## Order codes – STAR SYSTEM COMPONENTS

| Item  | Order code   |
|---|--------------|
| <b>Access Points</b>                          |              |
| AP-352 EU CISCO W/ANT 802.11b Access Point    | DL-946301013 |
| AP-352 EU Rugged CISCO W/O ANT 802.11b        | DL-946301015 |
| ANT4941-EU 2.2 DBI Dipole Rubber Duck Antenna | DL-94ACC1010 |
| ANT3195-EU 3 DBI Patch Wall Mount Antenna     | DL-94ACC1020 |
| ANT1728-EU 5.2 DBI Omni Ceiling Mount Antenna | DL-94ACC1030 |
| ANT1729-EU 6 DBI Patch Wall Mount Antenna     | DL-94ACC1050 |
| <b>ForWin development software</b>            |              |
| ForWin Developer (5 Licences)                 | DL-94A101011 |
| ForWin RunTime 5 (5 Licences)                 | DL-94A101012 |
| ForWin RunTime 10 (10 Licences)               | DL-94A101013 |
| ForWin RunTime UL (Unlimited Licences)        | DL-94A101014 |
| ForWin Start Up Kit (Developer & RunTime 5)   | DL-94A101015 |

## Development for Datalogic industrial terminals

**Windows CE SDK for Datalogic Terminals** – This is a set of libraries which enables the development of applications in the Windows CE environment for Datalogic Viper CE terminals.

**Terminal Emulation Client** – DL-TCL terminal emulation software, embedded in all Datalogic RF DOS terminals, connects them directly to the host systems. Through industry standard TCP/IP protocol, the DL-TCL enables comms with legacy systems and Windows-based applications via VT100, VT220 and IBM5250 terminal emulation.

**Web-based Application Generator** DL Web-Link brings web technology into wireless data collection applications. HTML is used via ASP pages to connect databases to the mobile units in the field. A text-based HTML browser for the mobile units is provided in this package designed for all Datalogic DOS-based terminals.

**FAST DEVELOPMENT FOR WIN CE**  
See MDT software for details – download  
**Pendulum** from [www.i2mobilesolutions.com](http://www.i2mobilesolutions.com)

## Datalogic EasyGen application generator

- versatile, cost-effective solution
- no programming skills required
- includes PC-based terminal simulation
- free demo download available

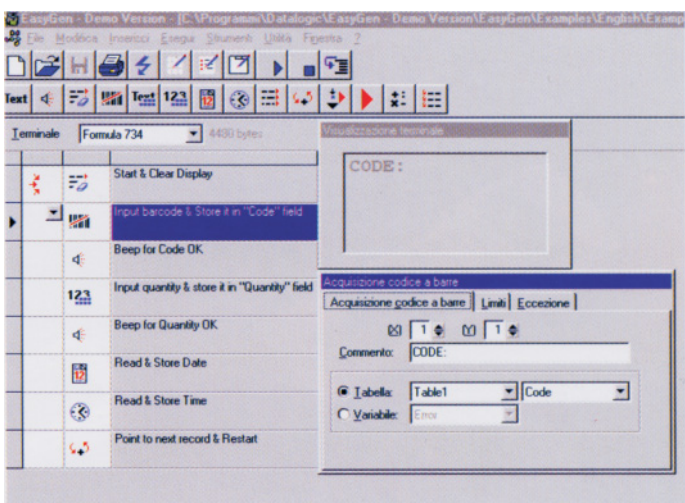
**EasyGen** is a complete development package which is easy to use and highly productive. Thanks to the user-friendly, icon-based graphical interface, users can quickly create their own personalised applications in Windows 95/98/2000/ME/NT environments.



By simply selecting the functions from the toolbar and completing some dialog boxes, without having to use complicated programming languages, in only a few minutes the user can build applications of average complexity that meet the

requirements of bar code data collection. The program includes tools which enable the integration of data with Visual Basic, Excel, Access, Delphi, etc, while an integral terminal simulator allows an application to be fully tested on the PC prior to uploading to the mobile unit.

A demo version of EasyGen, which has five ready-to-use example applications, can be downloaded free of charge from Datalogic's website, [www.datalogic.com](http://www.datalogic.com).



*EasyGen has a comprehensive and intuitive tool bar giving access to the 14 functions most commonly required to create applications*

## Order codes – DATALOGIC DEVELOPMENT TOOLS

| Item   | Order code   |
|--|--------------|
| CA51 8051 Compiler Assem Kit V6 - F6/F7xx & Wizard | DL-94A104890 |
| Development System For Formula 6/7xx and Wizard    | DL-94A104860 |
| Development System F7400                           | DL-94A104670 |
| Development System F7400 and C Compiler            | DL-94A104680 |
| Development System F8500                           | DL-94A104700 |
| Development System F8500 and C Compiler            | DL-94A104010 |
| Utility Tools Advanced Edition F660 For WIN 95/NT  | DL-94A104150 |
| Utility Tools Advanced Edition F725 For WIN 95/NT  | DL-94A104160 |
| Utility Tools Advanced Edition F734 For WIN 95/NT  | DL-94A104170 |
| OLE For Formula WIN 95/NT                          | DL-94A104300 |
| Systools Advanced Edition WIN 95/NT                | DL-94A104310 |
| Easygen For Formula 660/7xx and Wizard             | DL-94A104850 |
| TN Link Licence - Up To 10 Users                   | DL-94A104870 |
| TN Link Licence - Unlimited Users                  | DL-94A104880 |
| Unlimited User Upgrade (Must Have 10 User Licence) | DL-94A104920 |
| Formula TN Client Terminal Emul SW F8500/7400/9600 | DL-94A104570 |
| Terminal Emulation For PDC DOS                     | DL-94A101010 |
| OverLay Kit For F7400 TE 37K                       | DL-94ACC1100 |
| OverLay Kit For F8500 TE 37K                       | DL-94ACC1090 |
| OverLay Kit DL9600 TE 32K                          | DL-94ACC1070 |
| OverLay Kit DL9600 TE 48K                          | DL-94ACC1060 |