

**ACCU-SORT®**

# Model **EM-50**

## Scanner Expansion Module

Scanner Expansion Module



### *Accu-Sort's newest scanner interface offers many interface options.*

The EM-50 offers a great variety of parallel outputs, making it directly compatible with a wide range of industrial equipment. Fieldbus options are available, enabling you to attach Accu-Sort scanners to the increasingly popular buses such as DeviceNet and Profibus.

The integral DC-DC converter has a wide voltage input range, allowing the EM-50 (and the scanner attached to it) to be powered by commonly available DC power. When AC power is required, the optional AC power supply installs in the same enclosure, eliminating the need for separate mounting. The EM-50 can be used to power Models 10, 20 and 22.

The EM-50 is packaged in a compact, rugged, NEMA 4 rated cast-aluminum enclosure. All connections to the unit are through watertight cable glands.

Terminations are made via quick-connect terminal blocks, facilitating installation and updates. Diagnostic LEDs are visible through windows on the lid of the unit, and a beeper and keyswitch are optional.

The EM-50 comes standard with two NPN/PNP selectable parallel outputs for interfacing with most common industrial inputs. Optional solid state relays are available for high voltage/high current applications.

A programming/monitor port simplifies connection to our Model 10, 20 and 22 during programming, and also can be used to monitor real-time communications.

**Available options include:** Integral AC power supply, multiple output relay configurations, keyswitch, beeper, remote display, and the following fieldbus support:

- DeviceNet
- Profibus
- Ethernet

## **OUTSTANDING BENEFITS**

**The EM-50's broad I/O capability lets it interface directly with most industrial devices; spring actuated terminal blocks allow for quick connections**

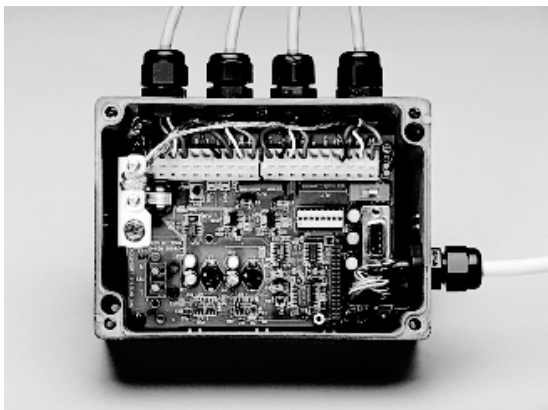
**Fieldbus availability allows EM-50 to "drop in" to existing fieldbus systems**

**Integral DC-DC converter uses commonly available DC power**

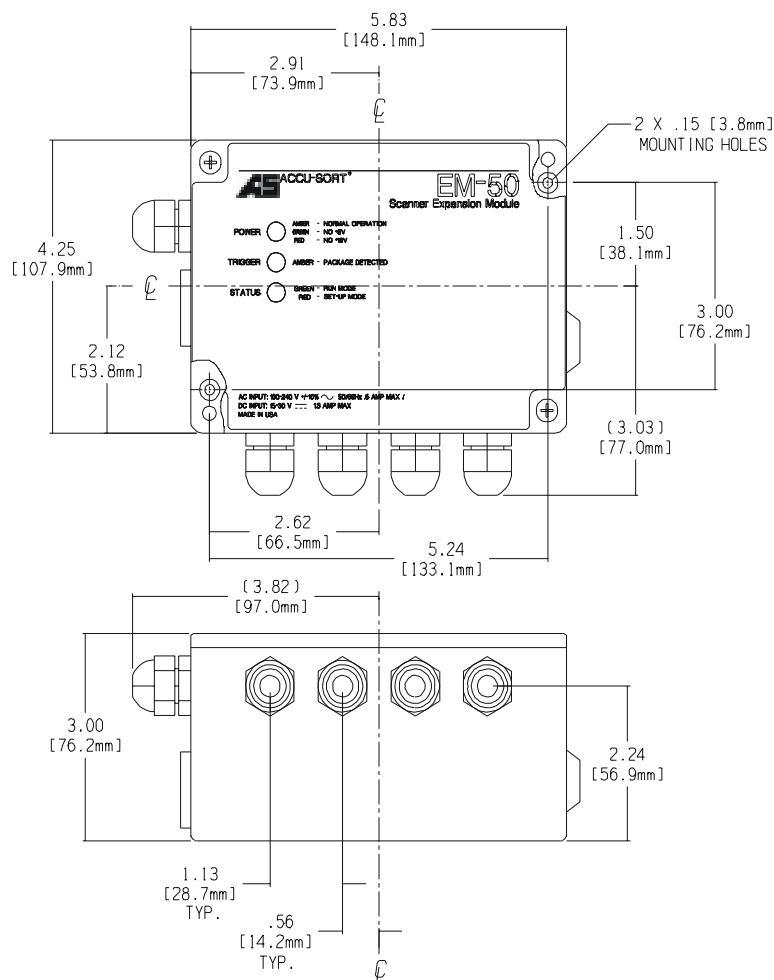
**NEMA 4 cast aluminum enclosure withstands the toughest industrial environments**

## *Solutions with vision®*

Accu-Sort® Systems, inc. • 511 School House Road • Telford • PA • 18969



EM-50 - Interior



## Product Specifications

### Parallel Outputs:

- 2 Standard NPN/PNP selectable outputs:
  - NPN - 60V/140mA max.
  - PNP - 30V/200mA max.
- 2 Optional solid state relays, up to 240 VAC/3A

### Visual Diagnostics:

- Power, Trigger, Status LEDs

### Connectors:

- Service port "D" connector
- Spring-actuated terminal blocks for:
  - Power input
  - Trigger/tach input
  - Serial port
  - Parallel outputs

### Size:

- Length - 5.8" (148 mm)
- Width - 4.3" (108 mm)
- Height - 3.0" (76 mm)

### Weight:

- 2 lbs (0.9 kg)

### Temperature Range:

- 32°-122°F (0°-50°C)

### Relative Humidity:

- 10%-95% non-condensing

### Enclosure:

- NEMA 4 (IP 65)

### Power:

- 15-30VDC standard, overvoltage and reverse polarity protected
- 100-240VAC 50/60Hz (optional)
- 5 Watts + Power consumption of attached scanner

### Communications:

- Service port for scanner programming/diagnostics
- Serial port pass-through from scanner
  - RS-232
  - RS-422
  - RS-485 Multidrop

### Options:

- Keyswitch (for scanner matchcode learn or other custom functions)
- Beeper
- Remote Display
- DeviceNet, Profibus, and Ethernet connectivity

### Safety approvals (pending):

- UL, FCC, CE

### Warranty:

- 1-year limited, parts and labor

Accu-Sort reserves the right to change specifications without notice

Accu-Sort® Systems, inc. • 511 School House Road • Telford • PA • 18969

800-BAR-CODE • 215-723-0981 • fax 215-996-8249 • info@accusort.com • <http://www.accusort.com>

