

Z1300™

INSTALL GUIDE



ZIPTAPE
LABEL I.D. SYSTEMS

Thank you for purchasing a ZT-1300 printer!

The following guide will help you install the equipment and software that goes with your ZT-1300 printer. It is strongly recommended that you read through the guide before installing anything. We say that because some instructions may not be clear enough without the explanations in this guide. This guide was created to be as comprehensive as possible in order to help you install everything quickly and easily. If you have any questions or comments through the process, please contact Technical Support at either 1-866-ZIP-TAPE (947-8273) or for the Jewelry Edition, 1-888-4-DJ-TAGS (435-8247).

TABLE OF CONTENTS:

Section 1: Equipment Overview	Page 3
Section 2: Ribbon Installation.....	Page 5
Section 3: Label Installation.....	Page 10
Section 4: Data Cable Installation	
Part 1: USB Installation.....	Page 13
Part 2: Parallel Installation.....	Page 17
Section 5: Power Cable Installation.....	Page 21
Section 6: Calibrating the Printer.....	Page 25
Section 7: USB ↔ Serial Installation.....	Page 27
Section 8: Driver Installation.....	Page 36

Section 1: EQUIPMENT OVERVIEW

In order to help you get your new equipment set up properly, we will review the pieces you'll find in the box with your new ZT-1300 printer.

You should find the ZT-1300 printer, a Quick Install Guide, a Parallel cable, 2 power cables, a Media Hub, an Empty Spindle, a spindle with an empty ribbon core, a USB cable, and a power adapter. These are all shown in Figure 1.1

If you are missing any of these pieces, please call Customer Service immediately at either 1-866-ZIP-TAPE (947-8273) or, for the Jewelry Edition, 1-888-4-DJ-TAGS (435-8247).

Figure 1.1



1	ZT-1300	2	Quick Start Guide	3	Parallel Cable
4	Power Cables	5	Media Hub	6	Empty Spindle
7	Spindle With Empty Core	8	USB Cable	9	Power Adapter

Keep in mind that not all of these objects are going to be used. For example, we will only use one of the power cables and either the USB or the parallel cable while installing this printer to your computer.

Now that we've identified the different parts, we can put them together. We'll start with loading the printer with ribbon and labels, then move on to plugging in the communication cables, and end with plugging in the power equipment. After the hardware is set up, we will then install the software.

First, after opening the box and removing the packing material, lift the printer out of the box, and discard the plastic bagging. Place the printer near the computer in an area that will allow easy access to open the printer to load labels and ribbons.

Section 2: RIBBON INSTALLATION

The next few steps detail how to install the ribbon.

In order to install the ribbon, remove it from the packaging and slide one of the black plastic ribbon spindles through the center of the ribbon roll as shown in Figure 2.1.



Figure 2.1

As you can see, the black ribbon spindle goes all the way through, there's a large stopper on one end that should be even with left edge of the roll. The spindle must be installed from the left as shown in the photo. The ribbon should come off the roll from the bottom.

Now that the roll is on the spindle, we can put it into the machine. In order to do that, we must lift the print mechanism so we may insert the print ribbon. To do that, press on both of the teal locking tenons, they will click and the mechanism will lift. This is illustrated by Figure 2.2.

When you push both of the teal locking tenons, you will hear a click and the print mechanism will lift on its own. That is how you will know that the mechanism has been released and that you can move on to the next step.



Figure 2.2

Once the print mechanism is opened, you can lift it and look underneath it. Figure 2.3 shows you where you will want to place the ribbon.



Figure 2.3

If you lift the print mechanism, you'll see that there is a teal disk that is designed to hold the squared end of the spindle on the Left-hand side, as shown in Figure 2.3. Look on the right side and you'll see a hole for the other end of the spindle to rest into. The easiest way to install the ribbon is to put the square end into its slot on the teal disk, then push on it and slide the other end into place. Once it's in place, things should look similar to Figure 2.4. You will know that the ribbon is placed properly when it does not fall out of position under the print mechanism.



Figure 2.4

Now, to start the core rewinding, we need to place the rewind core in its proper place. The rewind core sits in the spot on top of the print mechanism that is nearly identical to where the full ribbon roll was placed. This is shown in figure 2.5.



Figure 2.5

Once it is in place, you will want to stick the ribbon to the rewind core. The rewind core comes in the box already on the appropriate spindle. To attach the ribbon to the core, you can use tape, if needed. However, if you are starting a new ribbon, there is an adhesive section that you can use to attach the ribbon to the rewind core. Figure 2.6 shows a new ribbon attached and wound to the rewind core.

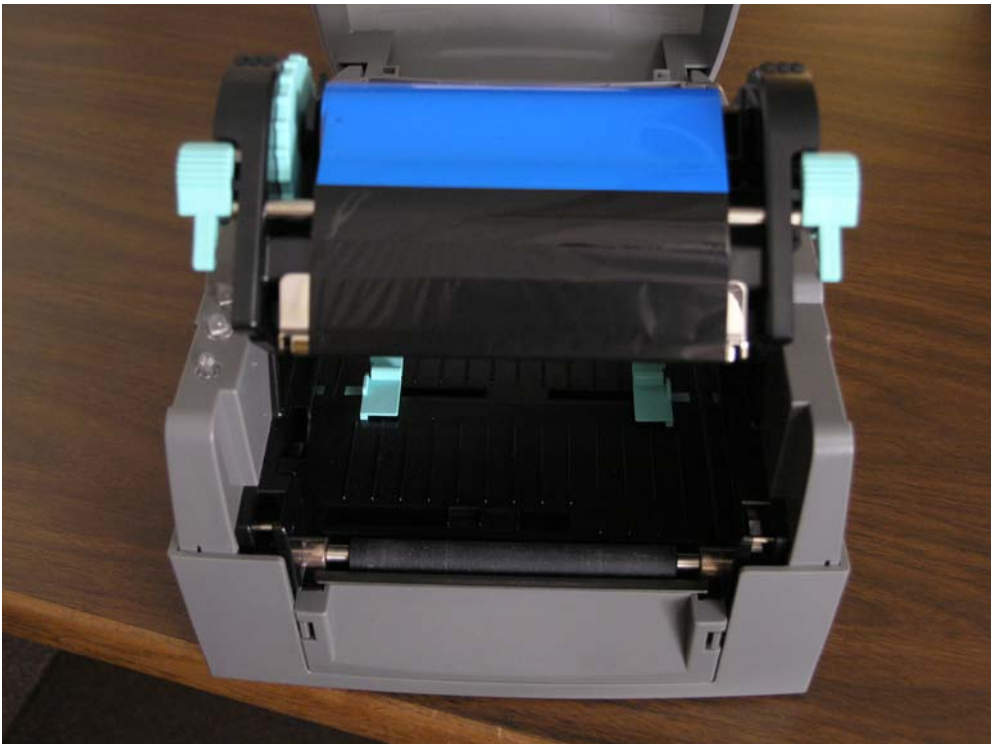


Figure 2.6

Now, all that is left to do is spin the wheel on the left toward the back of the printer to wind the ribbon tight and make sure it has no wrinkles when it goes over the silver portions of the print mechanism. Once it's tight, close the print head by pressing down on it until it clicks, to further adjust things. Once things look like Figure 2.7, we can move on.

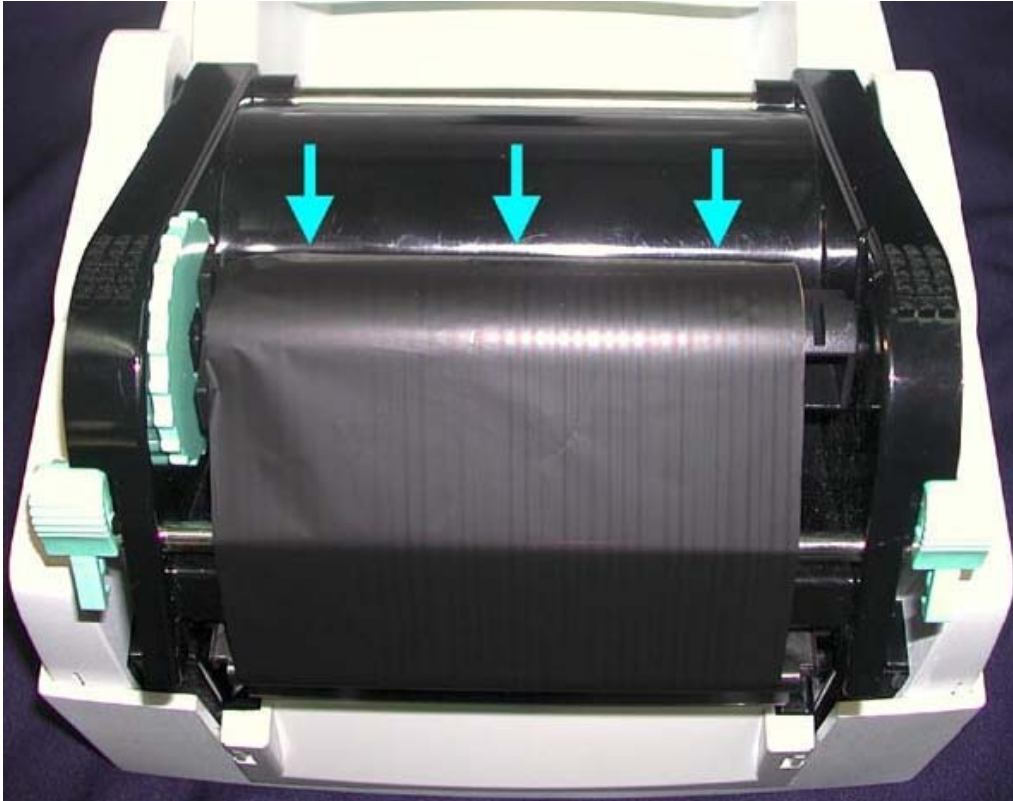


Figure 2.7

You can test to see if the ribbon is installed correctly by taking a piece of tape and putting it on the part of the ribbon that is facing outward, leaving enough so you can pull the tape off the ribbon. If you pull the tape off the ribbon and there is black ribbon stuck to it, then the ribbon is facing the correct direction. If you don't get anything from the ribbon, then it is backwards and will need to be redone so the correct side is facing outward.

Section 3: LABEL INSTALLATION

Now that the ribbon is installed, we can install the labels.

To begin, press on the locking tenons again to release the print mechanism. Next, unwrap your label roll and place it on the media hub, as shown in Figure 3.1.

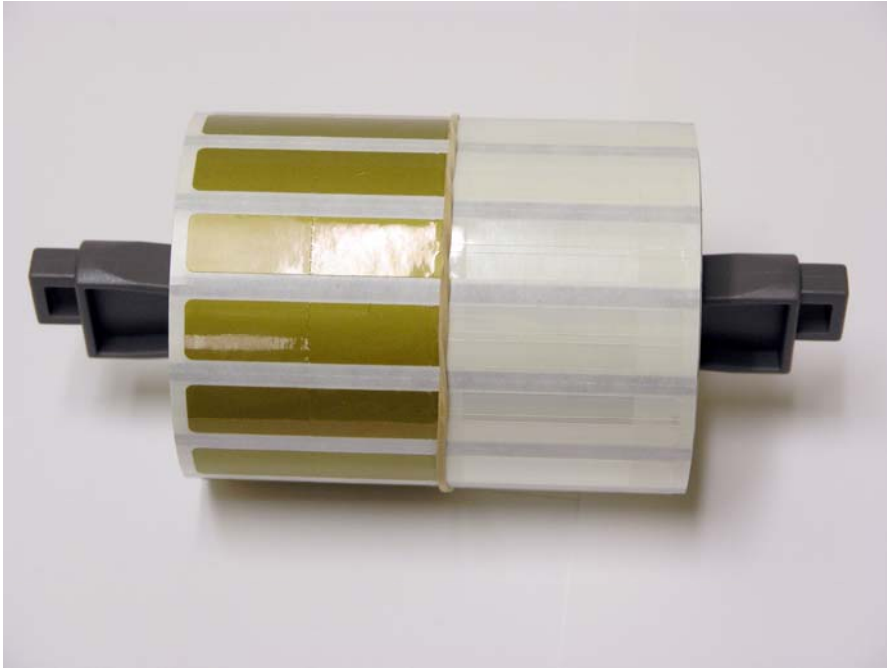


Figure 3.1

Next, set the labels and media hub into the printer in its designated place, like in Figure 3.2.

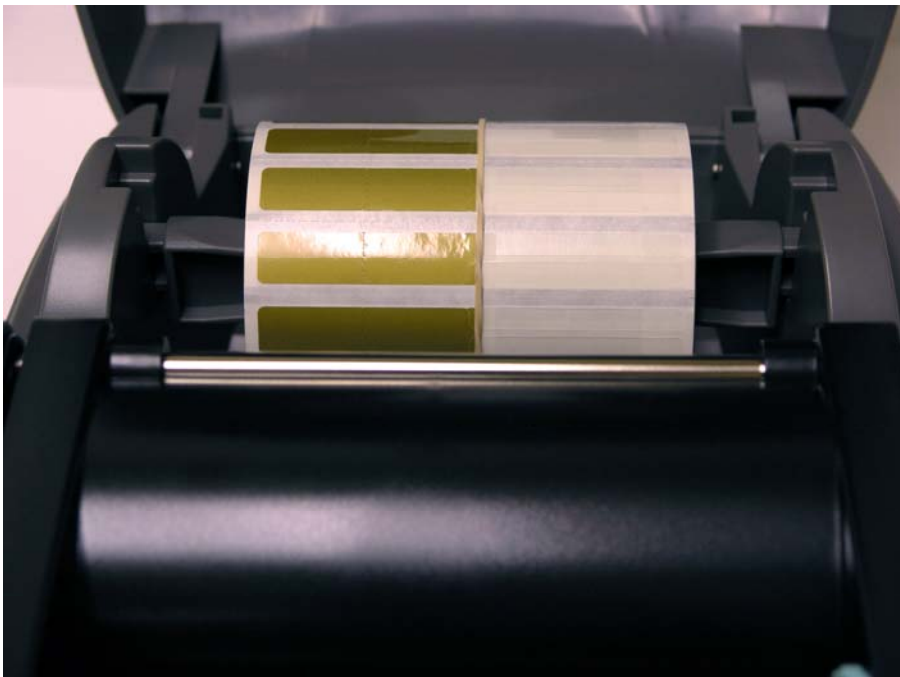


Figure 3.2

Depending on your roll core size, you will have to change the position of the media hub. If you have a 1” label roll core, set the roll in vertically into the slot. If it’s a 3” core, it goes in horizontally. You can also tell by the instructions on the media hub whether you put the media hub vertically or horizontally.

Make sure that your labels are coming over the top of the roll and that they are label up. The following picture, Figure 3.3, shows you how they are supposed to feed UNDER the print mechanism. Make sure the print mechanism is still open at this point.

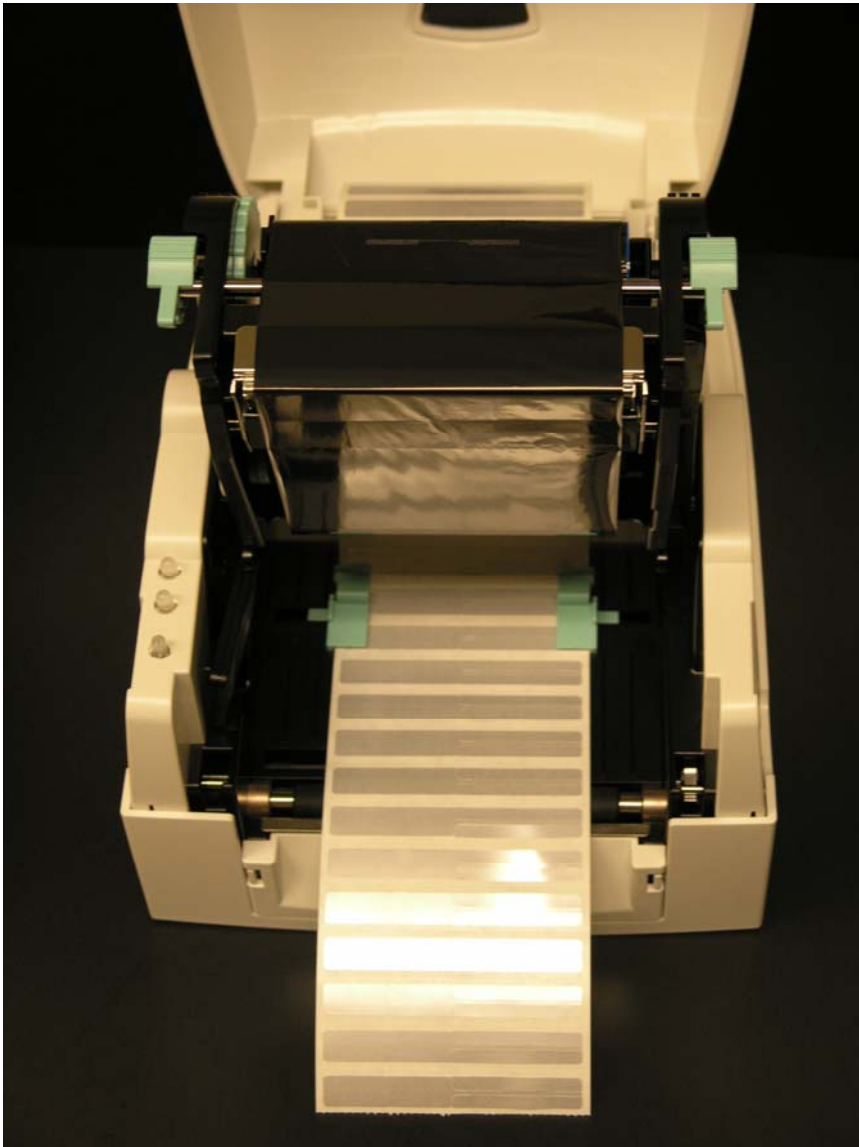


Figure 3.3

Those green objects should go over the labels, these “feet” help secure the labels in the printer. You want to make sure that the labels are secured, but not secured too tightly; you want the labels to move easily through the feet, but not move side-to-side.

Now that the labels are in place, we also want to adjust the moveable sensor. If you lift your labels and you can see the sensor. Figure 3.4 shows the sensor.



Figure 3.4

If you look, you'll notice that your sensor does not have a white portion; it has been highlighted for contrast in this picture so you can recognize its position in your printer more easily. If you look closely at your sensor, you'll notice one part has ridges and dips down (depicted by the white part in the picture), and the other part is rectangular. The rectangular portion is the sensor itself. You want to use the part with the ridges to push the sensor to the left and right. The sensor needs to be under the widest part of the label so it may sense how large the labels are. Once the sensor is in place, let the labels rest and push the print mechanism down until it clicks to close it.

Section 4: DATA CABLE INSTALLATION

Part 1: USB Cable Installation

Now that the printer is ready, we can move on to plugging in the communications cable. At this point, you must decide whether you want to use the parallel cable or the USB cable. USB is the more common choice, but you also have the option to install with the parallel cable. The installation over parallel will be demonstrated after the USB installation on page number 17.

The smaller end of the USB cable, shown in Figure 4.1, goes into the back of the printer, as shown in Figure 4.2.



Figure 4.1



Figure 4.2

The larger end goes into the computer. Most computers have USB ports in the back, but some have them on the front. Figure 4.3 shows the end of the USB cable that goes into your computer. There could be two or more ports on your computer, so if you find a full one, look around for another port nearby. A USB port is shown in Figure 4.4, and the cable plugged into the port is shown in Figure 4.5. If you can not find any USB ports on your computer, then you will want to install the Parallel cable which will be discussed on page number 17.



Figure 4.4



Figure 4.5

Once you have found a USB port, plug the larger end of the cable into that port. If you have decided to leave your computer on during the installation process, that is ok. The next step is to plug in the power cabling, which we will show on page number 21, after depicting how to install the parallel cable.

Part 2: Parallel Cable Installation

If you do not have a spot for the USB cable to go on your computer, or if you don't wish to use the USB cable, then you will want to use a Parallel cable, as it is depicted below. Figure 4.6 shows you part of the Parallel cable.



Figure 4.6

Figure 4.7 shows an empty parallel port on the back of a computer. Figure 4.8 shows the cable plugging into the port. The end of the cable that is shown in 4.6 is the end that is placed in the computer.



Figure 4.7



Figure 4.8

Next we must connect the other end of the parallel cable, shown in Figure 4.9, to the printer, as shown in Figure 4.10.



Figure 4.9



Figure 4.10

Remember to use only one of the data cables. Either parallel or USB, not both. Having them both plugged in could cause problems with the rest of the installation.

Section 5: POWER CABLE INSTALLATION

Now that we have one of the data cables plugged in, we can move on to plugging in power to the printer.

Take the power adapter and plug the appropriate end into the printer. Figure 5.1 and 5.2 illustrate this. When the power adapter is set up, we can move to connecting the power cable.



Figure 5.1



Figure 5.2

The next step is plugging in the power cable to the power adapter. You'll notice you have two cords to do this. One is for American standards and one for European. It is necessary to choose the one that is appropriate for your area. They are both pictured below in Figure 5.3 and Figure 5.4.



Figure 5.3



Figure 5.4

Once you've chosen the appropriate power cable, we can then plug it into the power adapter and the outlet to power the printer. The more flat end of the cable fits into a spot on the power adapter. Only one end of the power cable will fit into the power adapter.

Figure 5.5 shows the appropriate end of the power cable as well as where it fits into the power adapter.



Figure 5.5

Figure 5.6 shows the power cord plugged into an outlet.

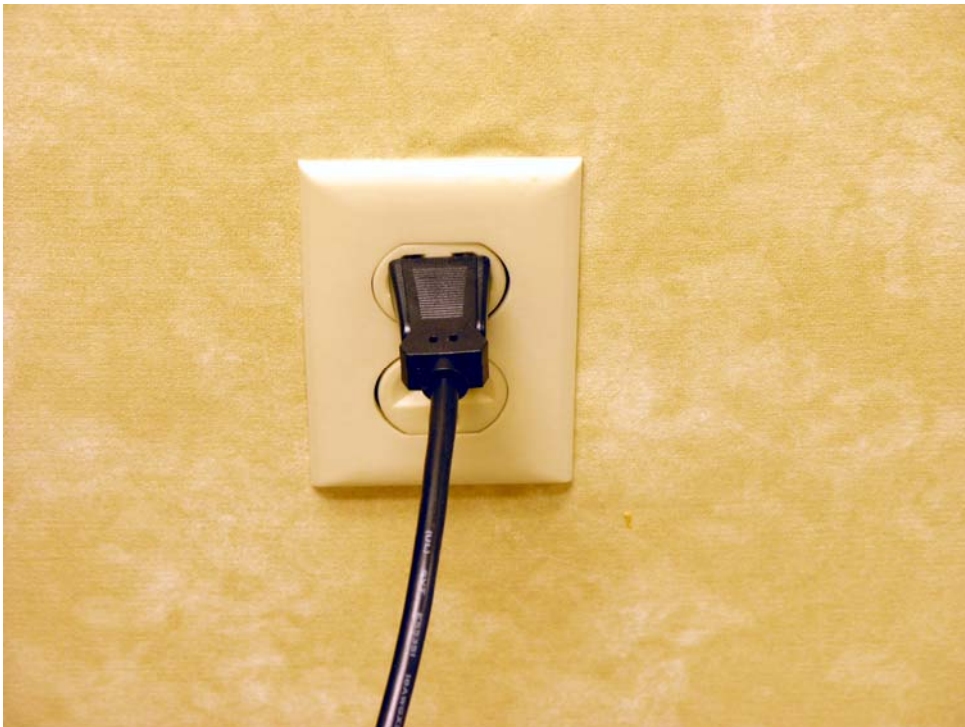


Figure 5.6

Section 6: CALIBRATING THE PRINTER

Now that we have all the cables connected, we must turn on the printer and go on to calibrate the printer and install the software.

Calibrating the printer means that we're making the printer see what size your labels are and how far apart they are. In order to get the printer to recognize this, there are a few steps we need to follow.

First, the printer needs to be turned off. You will find the power switch at the back of the printer, shown in Figure 6.1.



Figure 6.1

The next step is to press down the Feed button, which is shown in Figure 6.2.



Figure 6.2

While you are holding down the Feed button, you want to turn on the printer. The Ready and Status lights will begin going through a sequence of light patterns. When the Status light is steady Orange and the Ready light is flashing Orange, release the Feed button.

This will begin the calibration process for the printer. What will happen is that the printer will feed out several labels while it gauges how large the labels are and the gap between them. Once it is done, the Ready light will go back to Green and the printer will beep once to indicate it is ready to print.

If your printer feeds more than 10 labels when you are calibrating, there may be a problem. The best thing to do to fix this is to shut off the printer, open the shell and print mechanism, lift up your labels and re-adjust your sensor. Remember that the rectangular sensor needs to be under the largest part of the printable area of the label.

Now that the printer is powered up and calibrated, we can begin running the CD and installing the software for your ZT-1300 printer.

Section 7: USB ↔ SERIAL INSTALLATION

To fully install your hardware, you must install drivers at the computer. The drivers help the computer and your ZT-1300 printer communicate. The following few steps show what needs to happen when you are installing over the USB cable. This is only for USB, not for Parallel or for Serial installations.

All of the screen captures you see will be from the Windows XP operating system. If you are running any of the other Windows operating systems, such as Windows 98 or Windows 2000, you will see similar things, but not the exact same steps. We will try to point out as many of the differences as possible.

If you happen to have any questions or comments, please contact Technical Support at either 1-866-ZIP-TAPE (947-8273) or for the Jewelry Edition, 1-888-4-DJ-TAGS (435-8247).

Make sure that the CD ROM you were provided with is in the drive at this time.

When you turn the printer on, while the USB cable is connected to the computer, for the first time, you will see something like Figure 7.1. This means that the computer notices you are adding something new.



Figure 7.1

You will only see this message in Windows XP, for all other Windows versions, you will see a Found New Hardware Wizard. This is shown in Figure 7.2 and also the next step.



Figure 7.2

This wizard will walk you through the process of installing the USB drivers. When you are asked to connect to Windows Update, the best option is “No, not this time,” and to click on the Next button.

The next screen you’ll see is like Figure 7.3. It asks you if you want to install the software automatically or from a specific location. You can choose to install the software automatically. It will automatically search your CD ROM for the drivers you need. Once you have chosen an option, click on Next.

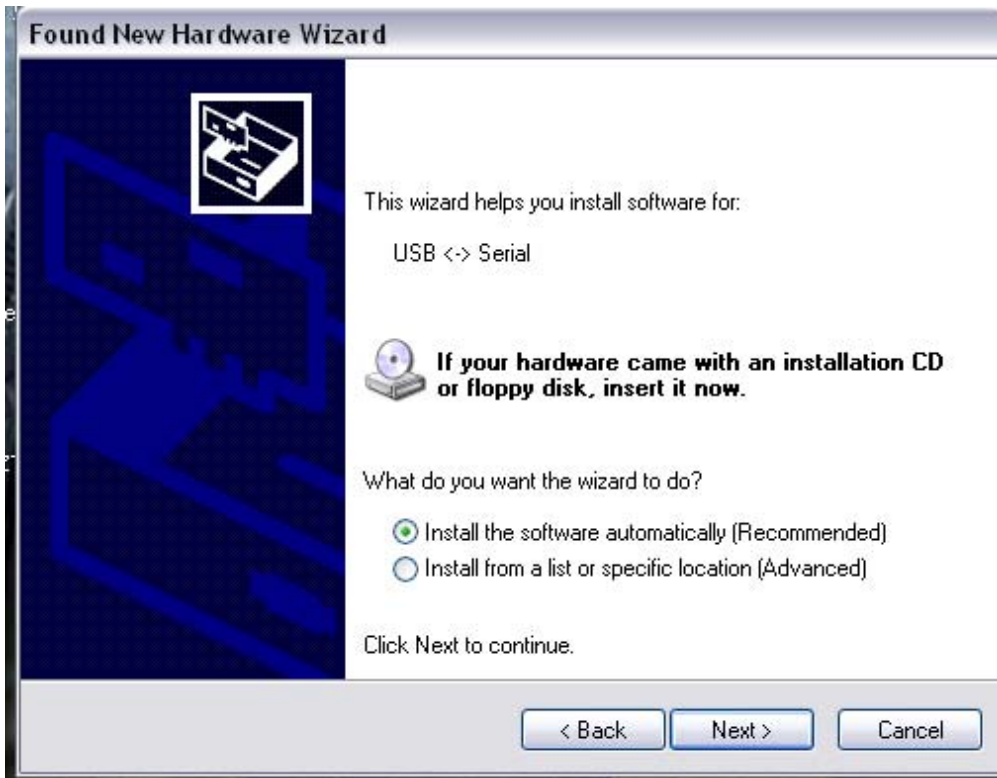


Figure 7.3

After clicking on Next, the next screen you see should be similar Figure 7.4.



Figure 7.4

The install is beginning to copy files over. Shortly after, you will receive a message like the one shown in Figure 7.5. All this message is saying is that the drivers you are trying to install have not gone through Windows Logo testing. This message will have no effect on how the drivers work with this system. You want to click on the “Continue Anyway” button in order to finish the installation.



Figure 7.6

After you have clicked on “Continue Anyway,” the install will continue and should look like Figure 7.7.



Figure 7.7

It will then inform you that it has finished installing the High Speed Serial converter. This is shown in Figure 7.8.



Figure 7.8

At this point, you will want to click on the Finish button and that will complete the installation for that device.

There is another step to the USB installation. Your system will now recognize a USB Serial Port.

In Windows XP, you will get a message like the one shown in Figure 7.9.



Figure 7.9

You will then have another “Found New Hardware” wizard appear on your screen. It will again ask you if you would like to connect to Windows Update, you may again tell it “No, not this time.” This is shown in Figure 7.10.



Figure 7.10

After you have clicked on the Next button, you will again be asked whether you want to search for the files automatically or choose a specific location. Indicate that you want it to search automatically again and click on Next. This is shown again in Figure 7.11.



Figure 7.11

Windows will again try searching your provided CD ROM for the needed files, as shown in figure 7.12.



Figure 7.12

After a few seconds, you will again be told that the software has not passed Windows Logo testing. You will want to click on the “Continue Anyway” button again in order to finish the installation. Figure 7.13 shows this.



Figure 7.13

After it has finished installing the drivers for the USB Serial Port, it will inform you that it has finished, like what is shown in Figure 7.14.



Figure 7.14

Windows XP will then show a message like Figure 7.15. This lets you know you are ready to move on to the next step of installation.

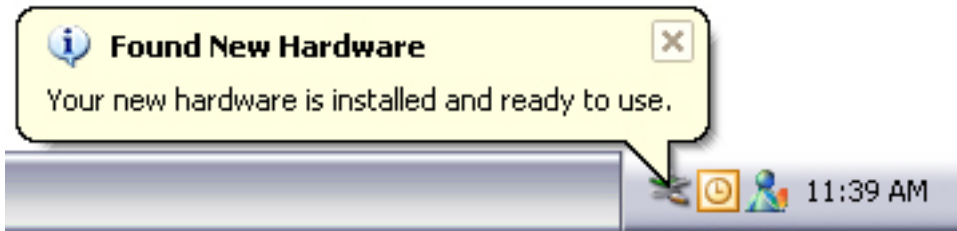


Figure 7.15

All other Windows operating systems will not have the message shown in Figure 7.15, but will end by clicking on the Finish button on the Hardware Wizard. The steps that were covered in this section will only happen if you are installing over a USB cable.

Section 8: DRIVER INSTALL

The following is a step-by-step guide through the Driver Installation for your ZT1300 printer. After the Driver install, we will go through installing the ZT Label software.

The CD you received should be in the CD ROM drive at this point.

You may have received something saying it found new hardware on your screen right after you turned on the printer. If so, run through the steps that are detailed in the USB ↔ Serial Installation section.

You should still have the CD ROM's splash screen open. It should look like Figure 8.1.



Figure 8.1

If you do not see this screen, you can eject the CD and put it back in. The screen will come up automatically. If it does not, you can open My Computer and double-click on your CD ROM icon.

Once you are looking at the screen shown in Figure 8.1, we can continue on. If you are running Windows XP or Windows 2000, you can click on the section titled “Install XP Drivers.” It will run you through the steps detailed below. If you are running one of the other Windows operating systems, the installation steps will be different and are not detailed in this guide. If you happen to have any questions about how to perform the install for the other versions of Windows, please call Technical Support at 1-866-ZIP-TAPE (947-8273) or 1-888-4-DJ-TAGS (435-8247) for the Jewelry Edition. These numbers also apply to any other questions or problems you may be having with the install.

Once you click on the Install XP Drivers option you should see something like Figure 8.2.

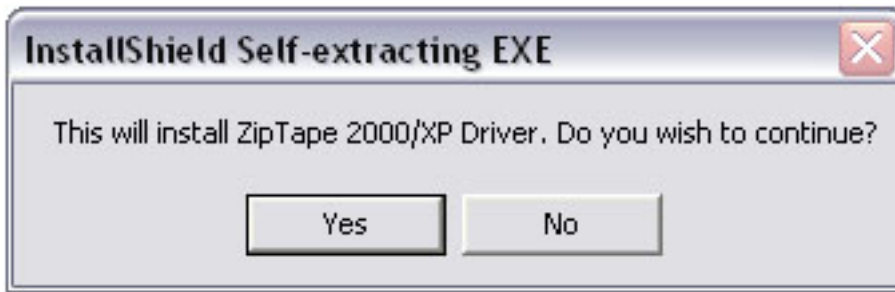


Figure 8.2

If you would like to continue installing the driver, click on Yes. If not, click on No. Clicking on No will close out of the Driver installation. By clicking on Yes, you will see a screen like Figure 8.3.

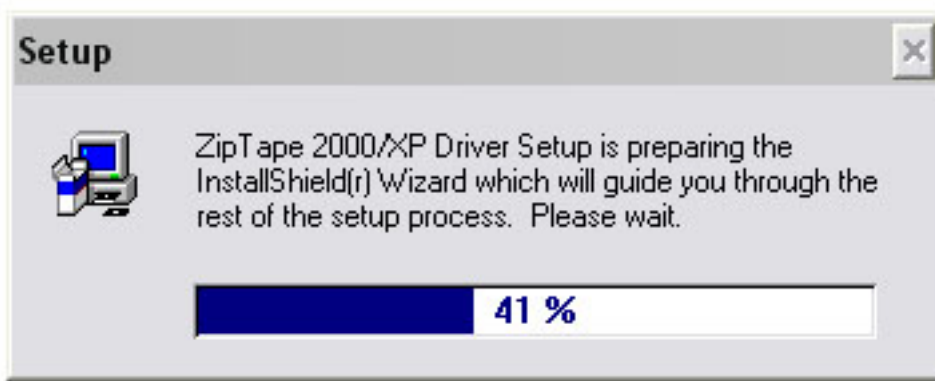


Figure 8.3

The gauge will go up to 100% then take you to something very close to Figure 8.4.

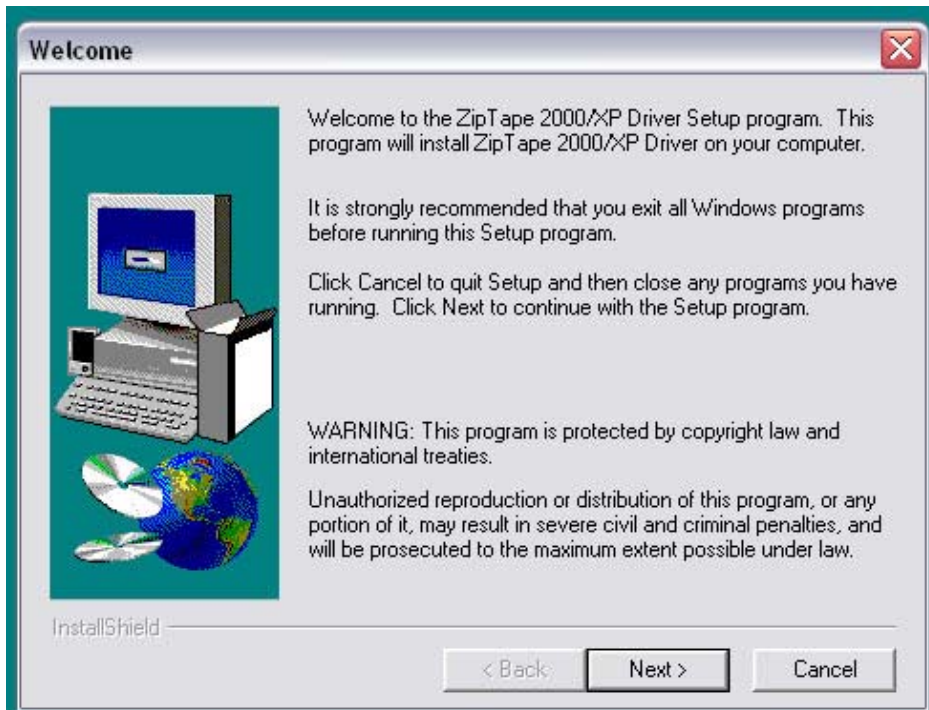


Figure 8.4

Figure 8.4 is a screen welcoming you to the Driver Setup program for your ZT-1300 printer. When you are ready to continue with the installation, click on Next. The next screen will come up and should look similar to Figure 8.5.

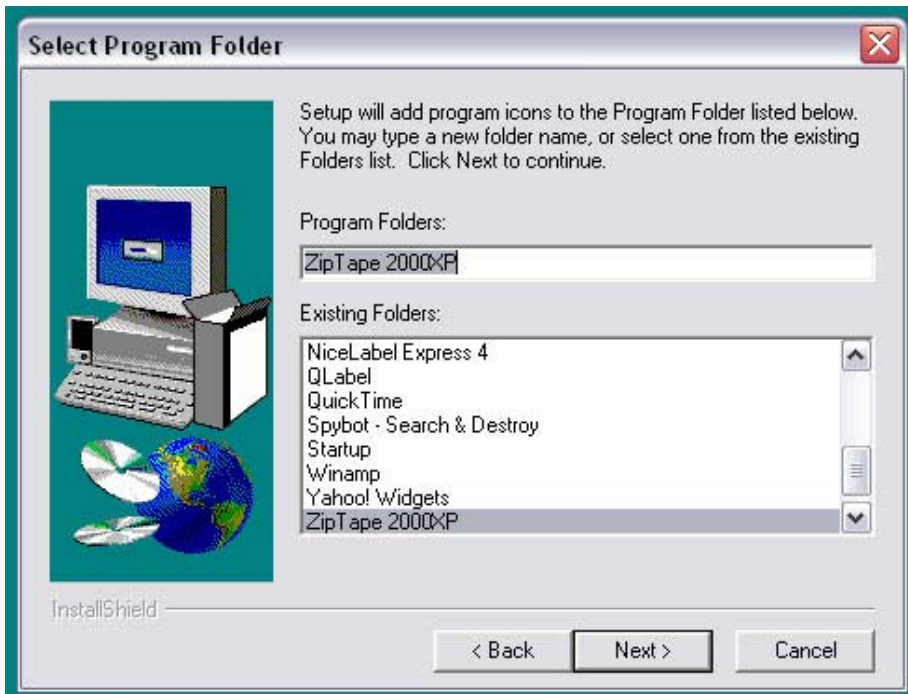


Figure 8.5

Figure 8.5 is a screen asking you what folder name you would like to put the drivers in. The drivers are usually stored in the Program Files folder on your main drive on the computer. The default name is most often the best, but you can change it if you feel it is necessary. Once the folder name is acceptable, click on the Next button. The next screen should look similar to Figure 8.6.

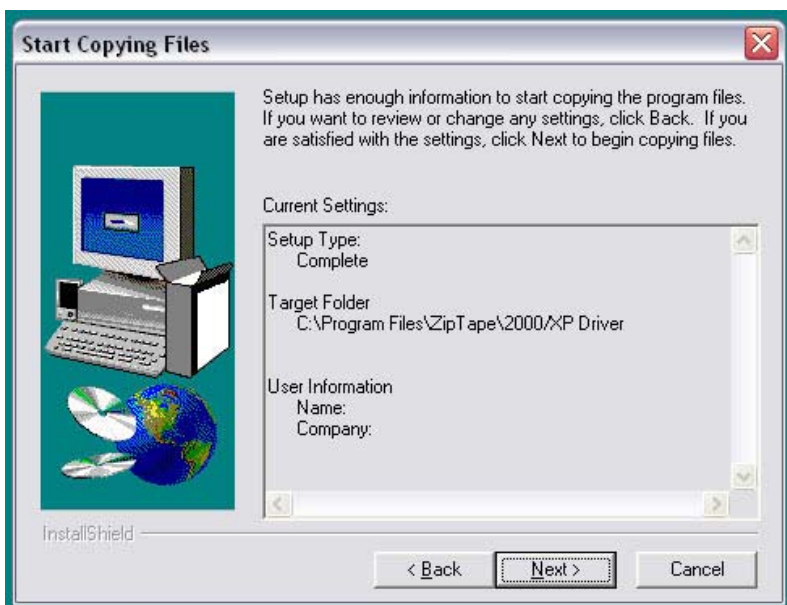


Figure 8.6

Figure 8.6 is double checking the previous choices. If these are ok, you can click on the Next button.

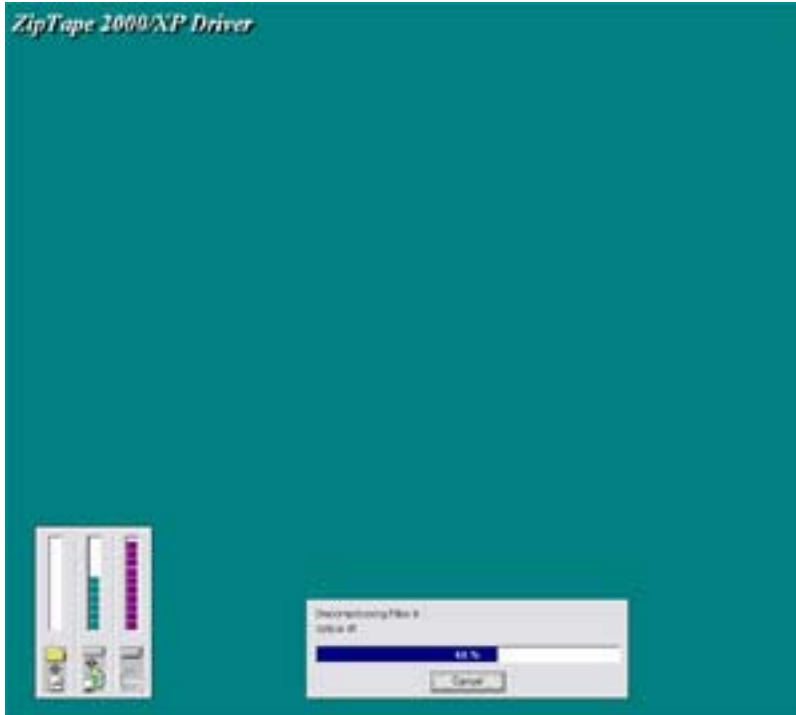


Figure 8.7

Figure 8.7 is similar to what you should see on your screen at this point. All the drivers are being installed onto the computer. Once it is finished, you should see something like Figure 8.8.

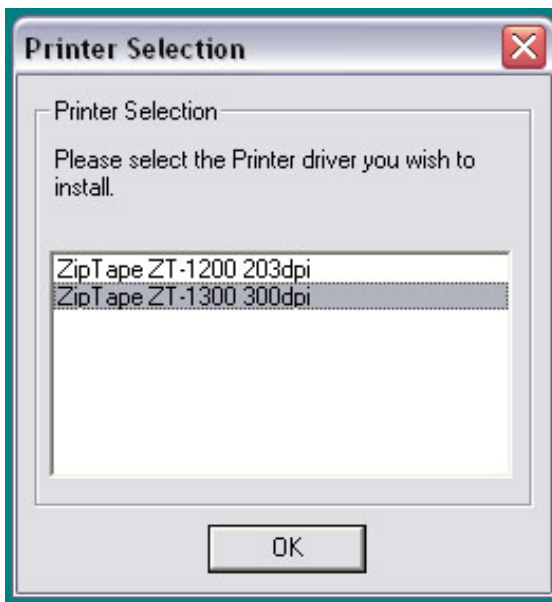


Figure 8.8

Make sure to choose the ZT-1300 from that list and click on OK.

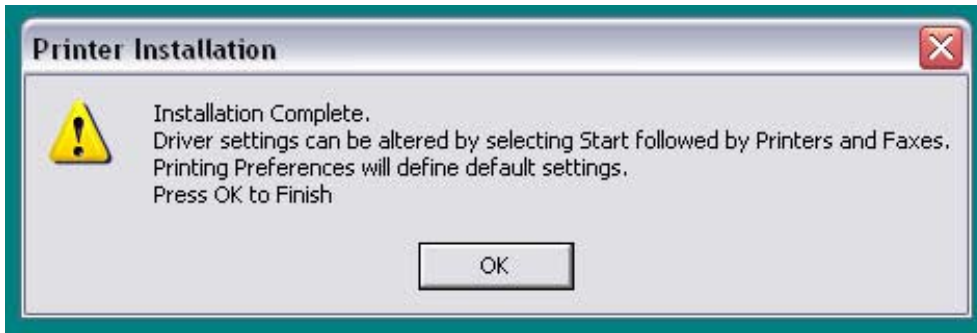


Figure 8.9

Figure 8.9 is similar to what should come up after you have chosen the printer type and clicked on ok. It is a message informing you that the installation is complete. Click on OK to complete the driver installation. Your screen will go back to the desktop at this point with the CD ROM screen.

You can check to see if the printer was installed by clicking on Start and going to Printers and Faxes. You may also go into the Control Panel and then to Printers and Faxes. You should then see a printer in there labeled as your ZipTape ZT-1300 printer.

If you did not successfully complete the process or had a problem during the process and would like help, please call Technical Support at 1-866-ZIP-TAPE (947-8273) or 1-888-4-DJ-TAGS (435-8247) for the Jewelry Edition and we would be more than happy to help you.

Now that the drivers are installed, we can proceed to install the ZT Label program to get you started printing labels on your ZT-1300 printer.

If you have the screen like Figure 8.10 open, click on the option titled ZT Label to install the program. If you do not have it open, eject the CD and re-insert it in the CD ROM. Refer to the directions on page number 36 for further information on how to get this screen to come up.



Figure 8.10

Once you have clicked on the ZT-Label option, a screen like Figure 8.11 should come up.

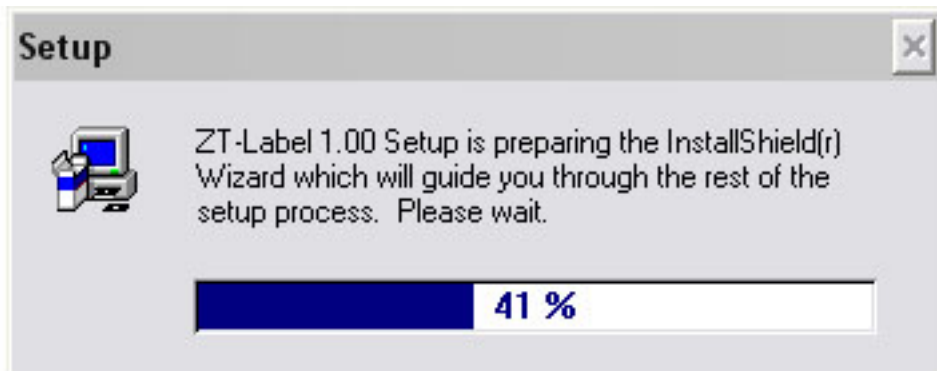


Figure 8.11

The gauge will move up to 100%, and then the next screen will appear, as shown in Figure 8.12.

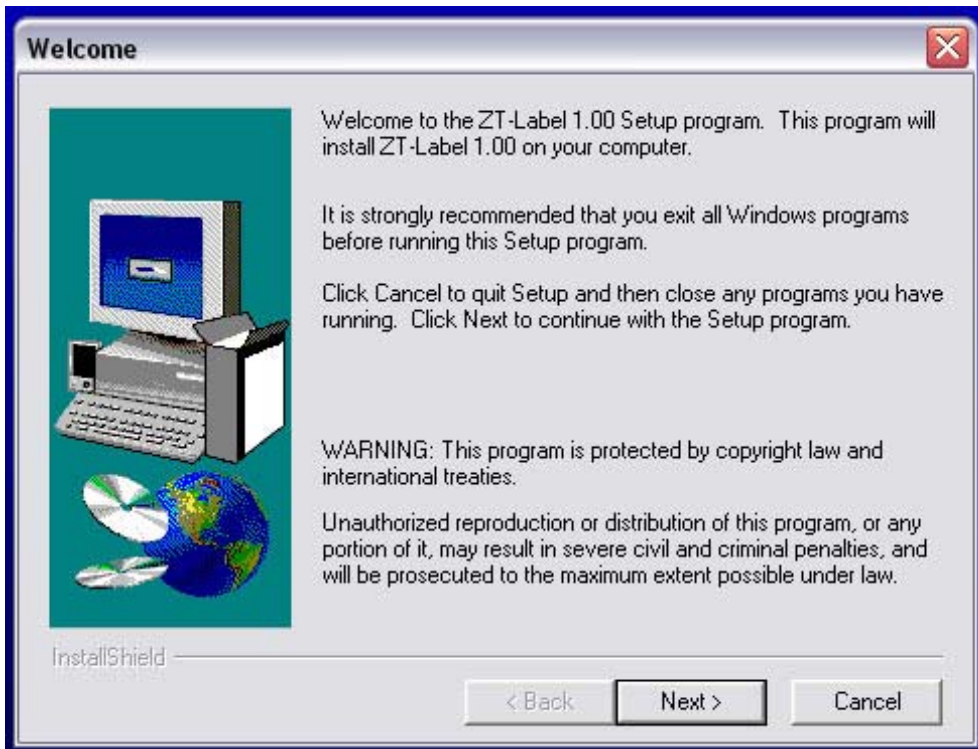


Figure 8.12

Figure 8.12 shows the Welcome screen for the ZT-Label install. If you wish to continue with the install, click on the Next button. If you do not wish to install, you may click on Cancel to exit out of the ZT-Label installation.

To continue the install after clicking on Next, you will see something like Figure 8.13.

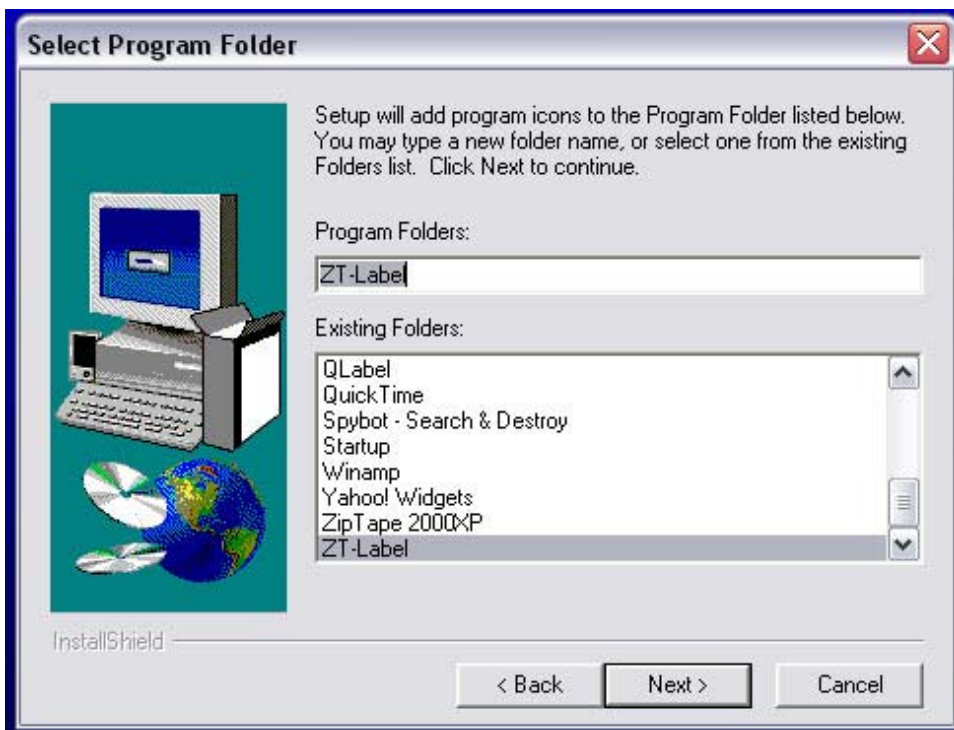


Figure 8.13

Figure 8.13 is asking you what you would like the program folder called. Usually the default folder is the best, but you can rename it if you wish. Once the folder name is set, click on the Next button to proceed.

On the next screen, it should look similar to Figure 8.14.



Figure 8.14

What this screen, shown in Figure 8.14, is doing is asking you to take a look at the settings and to confirm them by clicking on the Next button. If any of the settings are incorrect, you can click on the Back button to go and correct them.

Once your settings are acceptable, click on the Next button. You should see the next screen, and it should look much like Figure 8.15.

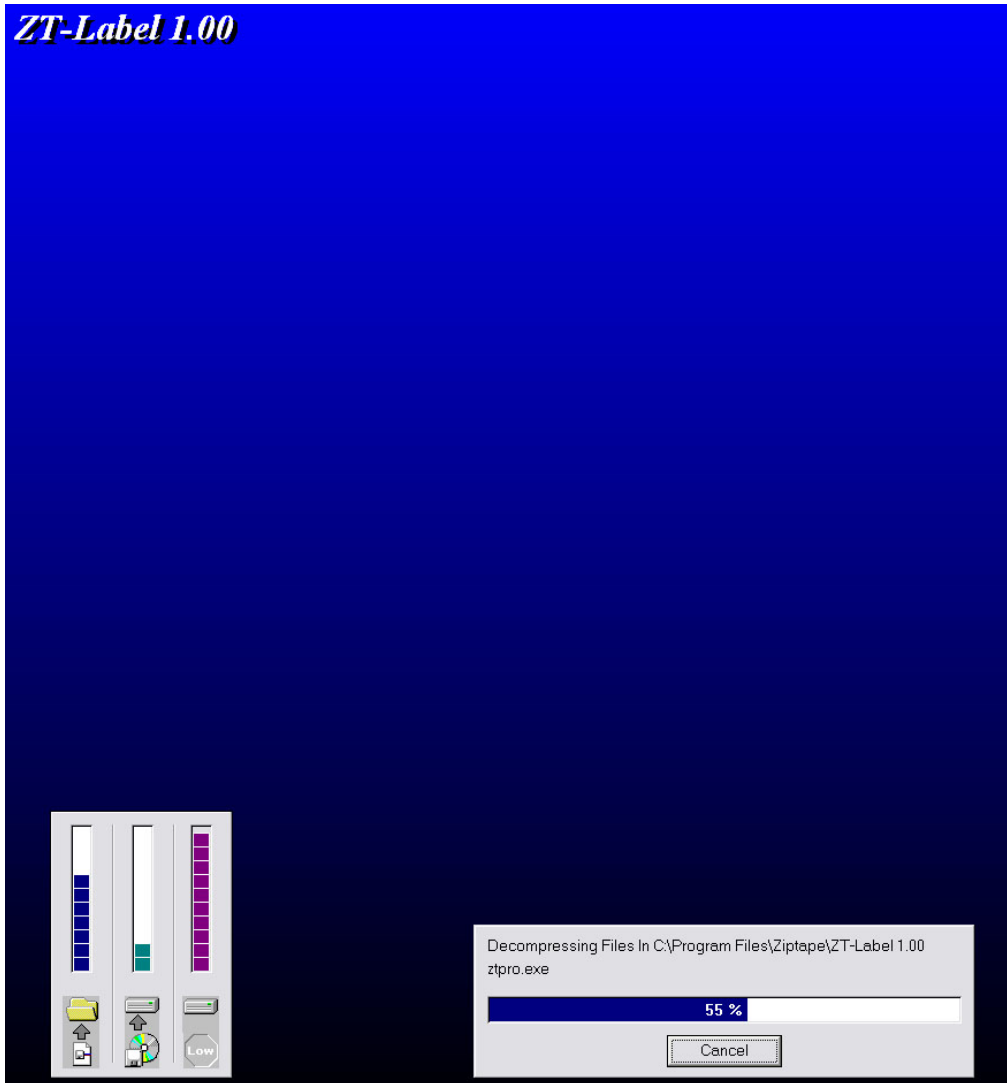


Figure 8.15

The install goes through and installs the necessary files. When it is done, it will close and you will be ready to use the ZT-Label program to print labels with your ZT-1300 printer. You should be able to go to Start, then to Programs and see your ZT Label program so you may begin printing.

This completes the installation for the ZT-1300 printer and the ZT-Label program. If you have any questions about the steps covered above please call Technical Support at 1-866-ZIP-TAPE (947-8273) or 1-888-4-DJ-TAGS (435-8247).