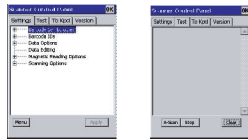


Laser Scanner

The PA962 has an integrated laser scanner, which reads all major bar code labels with excellent performance. Trigger keys are located on the left and right sides of the unit. Press either one to activate the laser scanner. The PA962 also has a built-in Scanner Setting.exe program that allows the user to test the barcode scan function. Scanner Setting.exe is located in directory \Windows\Control and is also accessible by shortcut via "Setting/Control" on the Start menu.



Power system Charging the Lithium-Ion Battery Pack

The optional Docking Station is a convenient accessory for daily use of the PA962. The charging will be completed within 3 hours. Or, when using the included Charging/RS232 Cable or Charging / USB cable the charging time of the battery pack is about 3 hours.



Charging the Main and Backup Battery for the First Time

Note: Before using the PA962 for the first time, charge the unit for 16 hours to fully charge the empty backup battery.

"Battery Low" icon: When displayed indicates the battery is low and needs to be charged. In other words, there is no external power supply, the battery charge is low or very low, and charging the PA962 is recommended.



"Battery Very Low" icon: When displayed indicates the battery is very low. Stopping the operation and charging the PA962 immediately is highly recommended.



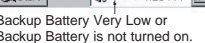
No icon: When displayed means there is no external power supply to the PA962 but its battery power status is good.



"Backup Battery Low" icon: When displayed indicates the backup battery is low and needs to be charged.

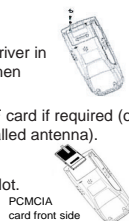


"Backup Battery Very Low" icon: When displayed indicates the backup battery is very low. Stopping the operation and charging the PA962 immediately is highly recommended.



Installing the Wireless Local Area Network (WLAN) Card

- Power off the PA962
- Remove the stylus, using the screw driver in the stylus to remove the screw, and then open the PCMCIA compartment
- Attach the snap-on antenna to the RF card if required (only the Cisco card comes with a pre-installed antenna).
- Attach pulling-tag to antenna.
- Insert the RF card into the PCMCIA slot.



(12)

Operating the PA962 for the first time without the AC adapter, and without fully charging the backup battery may result in loss of data stored in RAM memory.

(13)

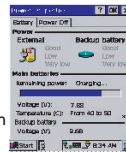
Note: Backing-up data by backup battery only without the main battery installed in the battery compartment may take as long as 8 hours. Therefore, in order to prevent data protection failure due to backup battery failure, do not leave the PA962 without the rechargeable battery pack installed, or without connection to AC power for an extended period of time.

It may take up to 72 hours to backup data when the PA962 is automatically shut down because of very low battery power while the depleted batteries are still installed in the battery compartment.

Power Status Indication

Check Battery Status:

The battery menu item will show the status of the main and backup batteries. There are 3 kinds of status indicators — "Good", "Low" and "Very Low". Bold characters indicate the actual status, e.g. battery icons in the illustration at right mean both the main and backup batteries are "GOOD".



It is necessary to charge the battery when "Low" or "Very Low" are displayed in bold characters. If "Low" or "Very Low" are still displayed after charging, please contact Unitech Technical Support.

Four different icons are displayed on the status bar to indicate the on-board power status.

"Plug" icon: When displayed, this icon indicates that the battery is charging. The PA962 is either plugged-in via the DC 12V/2A power adapter or in the docking station.



Troubleshooting

(15)

If the screen is blank or the unit fails to turn on, charge the battery for 16 hours. If the battery is fully charged and the unit still fails to turn on, reboot the device by inserting a pin in the reset hole.

Laser

The Unitech PA962 is certified in the U.S. to conform to the requirements of DHHS/CDRH 21CFR Subchapter J and to the requirements of IEC 825-1. Class II and Class 2 products are not considered to be hazardous. The PA962 contains internally a Visible Laser Diode (VLD) whose emissions do not exceed the maximum limits as set forth in the above regulations. The scanner is designed so that there is no human access to harmful laser light during normal operation, user maintenance or during prescribed service operations.

CAUTION - Use of controls or adjustments or performance of procedures other than those specified herein may result in hazardous laser light. Use of optical instruments with the scanner will increase eye hazard. Optical instruments include binoculars, microscopes, and magnifying glasses. This does not include eye glasses worn by the user.

The laser safety warning label required by the DHHS/IEC for the PA962's optional laser scanner module is located on the memory compartment cover, on the back of the unit.

European Conformity Statement

Declaration of Conformity with Regard to the R&TTE 1999/5/EC and EMC 89/336/EEC directives.

FCC Statement

This is a FCC Part 15 Class B product. In a domestic environment this product may cause radio interference, in which case the user may be required to take adequate measures.

unitech

PA962 Quick Reference Guide

Rev.B

POWERED BY ORACLE
unitech is a member of Oracle Embedded Software Licensing Program

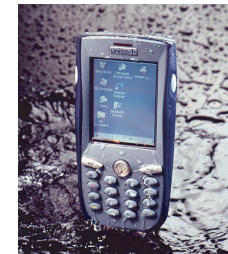
Cisco Compatible

www.unitech-adc.com

Introduction

(1)

Your PA962 is a rugged, compact and lightweight palm-size computer. It utilizes the Windows CE® operating system, and incorporates an integral bar code scanning laser device, color LCD with touch screen, keypad, IrDA interface, and wireless communication capability. It provides the user with a standard Windows-based environment for customizing and operating the device. This PA962 product reference guide will guide you to access your PA962.

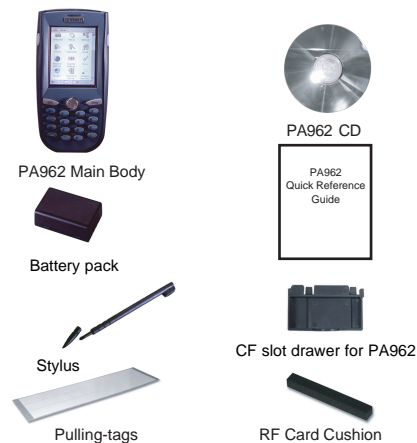


unitech PA962

unitech PA962 & Accessories

(2)

After opening the box, please make sure the following accessories for the PA962 are present:



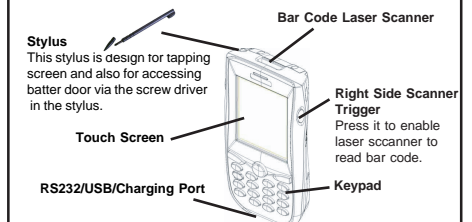
Additional accessories are shipped separately.

- Unpack the box and save the packaging in the event the unit needs to be stored or returned to unitech for service.
- Check the unit for shipping damage. If anything is missing or damaged, notify your unitech sales representative.

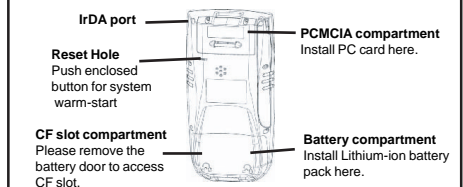
Tour of the unitech PA962

(3)

PA962 Front and Left Side



PA962 Back



First Steps with the Unitech PA962

There are three ways to provide power to the PA962:

- Rechargeable Lithium-Ion battery pack
- RS232/Charging cable, USB/Charging cable
- Docking Station

NOTE: data you enter may not be properly stored until the built-in backup battery has been adequately charged. Please be reminded to turn on the back up battery before you charge the terminal

Setting up the PA962

④

Your Unitech PA962 is shipped with a protective film over the display. This film may be left in place to protect the screen from scratches, however, it will slightly reduce the readability and contrast of the image. You may remove the protective film by peeling it off from one corner.

Installing the Battery Pack

CAUTION - Please do not turn off the terminal before you remove the main battery. Improper installation of the rechargeable battery pack can cause the metal clips in the battery compartment to bend or break. Carefully read and follow the procedure below for installing the battery pack.

1. Remove the battery compartment door (located on the lower back side of the unit) by using the screw driver of Stylus.
2. Position the battery pack with the label side towards you, and the battery pack strap towards the bottom of the unit. Insert and fully seat the battery pack, making sure the shape of the battery pack fits the shape of the battery compartment.
3. Position the battery pack and install the battery compartment door by using stylus screw driver.



Supplying power to the PA962

⑤

Connect the RS232/Charging Cable or USB/Charging Cable to the PA962, and then connect the AC adapter to the cable's power jack and an electrical outlet.



Or place the PA962 into the Docking Station (first connect the power supply to the Docking Station).



Charging the Main and Backup batteries for the first time

It may take up to 16 hours to fully charge the empty backup battery. The first time charge should be for at least 16 hours to insure a proper charge.

CAUTION: Operating the PA962 for the first time without the AC adapter, and without fully charging the backup battery may result in loss of data stored in RAM memory.

Before using the PA962 for the first time, charge the unit for 16 hours to fully charge the empty Lithium backup battery



RECYCLE LITHIUM-ION BATTERIES.
DO NOT THROW IN TRASH.



Initial Operation

Note: Be sure that you have fully charged the battery before turning the unit on.

Insert CF card to PA962

⑥

Find the CF drawer from PA962 package, insert CF card to the CF drawer. Then insert the CF drawer to the PA962 and place the CF slot door. Re-install the battery door to PA962 with screw driver of PA962 stylus.

1. Your CF card.
2. CF drawer
3. Insert the CF drawer into the PA962.

Pressing the ON/OFF Key

The Unitech PA962 welcome screen appears. The Windows CE® screen will appear shortly thereafter.



Adjusting Screen Brightness

Press [FUNC] key and Cursor key to decrease or increase screen brightness.

Calibrating the PA962

This screen will automatically appear when the unit is powered-on for the first time or after the system is reset. This screen can also be accessed at any time by pressing the hot key [FUNC] and the [ESC] key.

The PA962 will prompt you to calibrate the unit by tapping a sequence of screen locations. Tap gently but firmly. When you have completed the series of taps, press the [ENT] key to confirm it or press the [ESC] key to cancel it.



Setting Time Zone, Date, and Time

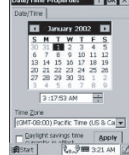
⑦

After Calibrating the PA962, the "Date/Time Properties" dialog box will appear. Follow the steps below to set the date and time.

Setting the Time Zone first

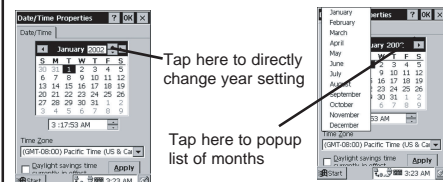
Follow the steps below to set up your time zone.

- 1) Tap the location arrow to see a list of cities
- 2) Choose your location (or nearest listed one)
- 3) Select the Daylight Savings Time check box, if necessary
- 4) Tap the APPLY button



Setting Year and Month

Tap the Left or Right arrows to scroll the month.



Tap here to directly change year setting

Tap here to pop up list of months

Or directly tap location of year or month to change the year or month setting.

Exiting Date/Time Properties Settings

Tap OK or X (cancel) button at upper-right corner to exit.

Flash Memory

⑧

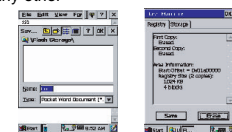
Flash Memory is a re-writable location in which to store up to 8 MB of programs and data files. The benefit of this feature is that files and programs saved in Flash Memory are unaffected by the PA962's power status.



To access the contents of Flash Memory, simply select "My Computer" on the desktop and then select "Flash Storage". The programs and data files currently stored in Flash Memory will be displayed.



To save to Flash Storage, select File, Save To, and select Flash Storage just like you would select any other storage medium.



Using the Keypad and Scanner

Keypad

The PA962 keypad contains 19 keys, including Cursor key, 0-9, Alpha key, ON/OFF, Function, Escape, Backspace, and Enter key. Please refer to the picture in section 9.

Alpha Key

⑩

When the PA962 boots, the default condition is Numeric Mode on. When you toggle to Alpha Mode, the default condition is CAPS mode off.

Alpha Mode Press alpha to alpha mode, the default condition is CAPS off.

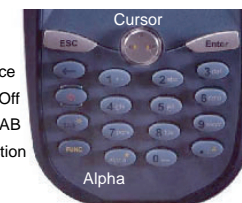
CAPS Press Alpha key twice to toggle CAPS

Key in Press Cursor-UP to enter selected character.

Useful hotkeys

The PA962 provides eight combination hot keys to activate specified screen setting functions or programs. These hotkeys are useful for calibrating the touch screen, toggling the backlight, and adjusting screen contrast when the menu-driven operation is disabled. Below is the list of hotkeys. To use them, press and hold the [FUNC] key in combination with the corresponding second key.

- [FUNC] + [ESC] Check Stylus properties & Re-Calibrate the PA962's touch screen.
- [FUNC] + [D] Decrease screen brightness.
- [FUNC] + [E] Increase screen brightness.
- [FUNC] + [TAB*] Toggle screen & LCD backlight.
- [FUNC] + [6] Task manager
- [FUNC] + [7] Scanner Setting.exe
- [FUNC] + [8] Scanner Setting utility
- [FUNC] + [9] System Information
- [FUNC] + [0] Space
- [FUNC] + [Cursor] Use Function key & Cursor "UP" to Toggle Display Backlight
- [FUNC] + [Cursor] Use Function key & Cursor "Down" to Toggle Keypad LED Backlight



Backspace
Power On/Off
TAB
Function
Alpha

[ON/OFF] When the unit is off, pressing the On/OFF key will turn the unit on. Alternatively, when the unit is on, this key must be pressed and held down for about two seconds in order to turn the unit off.

[ESC] The Escape key will perform the same function as tapping the CANCEL button or the X button on the touch screen.

[Back space] The Backspace key is used to erase previously input characters.

[FUNC] The Function key is used to perform alternative key functions.

[TAB] The Tab key is used to toggle between data fields or to place the cursor at pre-determined places in a programming or word processing application.

[ENT] The Enter key is used to initiate a process or confirm a selection made by the user.

[Cursor] This Cursor key is used to navigate among applications.

[Alpha] This Alpha key is used to toggle between Numeric & Alpha Mode. This Alpha key is also used to toggle CAPS at Alpha Mode.

Software Keyboard (Windows CE Keyboard)

⑪

Since the PA962's keypad allows input of numeric characters only, the Windows CE Software provides a touch screen keyboard for input of other characters. The Windows based keyboard replicates the layout of a standard PC keyboard.

Opening the Windows CE Keyboard:

The Windows CE keyboard can be opened by tapping the "keyboard" icon on the task bar. (Refer to picture).



Double-tap here

Keying-in Characters:

After tapping the "keyboard" icon, the Windows CE keyboard pops up. Character input is the same as on a standard PC. Simply tap the on-screen button corresponding to the character you want to input.

International Character Support: Tap the [á] button to switch from the standard English keyboard to the European keyboard.



Moving the Keyboard:

Use the stylus to point to the title bar (the bar displaying "Input panel") and then move the stylus without lifting it from the screen.

Closing the Keyboard:

Tap the keyboard icon to close the Windows CE keyboard.

Using the Laser Scanner

Note: Reading software must be enabled in order to operate the scanner. This can be a user-loaded application or a pre-loaded utility such as Scanner Setting.exe.

