

QRC

V R C 8 9 0 0
R a d i o T e r m i n a l



symbol[®]
The Enterprise Mobility Company™

V R C 8 9 0 0 R a d i o T e r m i n a l

© 2002-2005 SYMBOL TECHNOLOGIES, INC. All rights reserved.

Symbol reserves the right to make changes to any product to improve reliability, function, or design.

Symbol does not assume any product liability arising out of, or in connection with, the application or use of any product, circuit, or application described herein.

No license is granted, either expressly or by implication, estoppel, or otherwise under any patent right or patent, covering or relating to any combination, system, apparatus, machine, material, method, or process in which Symbol products might be used. An implied license exists only for equipment, circuits, and subsystems contained in Symbol products.

Symbol and the Symbol logo are registered trademarks of Symbol Technologies, Inc. Other product names mentioned in this manual may be trademarks or registered trademarks of their respective companies and are hereby acknowledged.

Symbol Technologies, Inc.
One Symbol Plaza
Holtsville, N.Y. 11742-1300
<http://www.symbol.com>

Patents

This product may be covered by one or more U.S. and foreign patents. For patent information go to: <http://www.symbol.com/patents>.

Warranty

Subject to the terms of Symbol's hardware warranty statement, the VRC8900 Radio Terminal is warranted against defects in workmanship and materials for a period of one year from the date of shipment. For the complete Symbol hardware product warranty statement, go to: <http://www.symbol.com/warranty>.

Introduction

The VRC 8900 Radio Terminal is a vehicle or fixed-mount data terminal with a direct radio link to a host computer. You can enter data using the touchscreen, the optional QWERTY keyboard, an optional bar code scanner, or a combination of the three. The data is transmitted wireless to a host computer. The terminal features:

- Ergonomic design with color LCD touchscreen
- Internal wide-range power supply (11-60VDC) to accommodate propane, gasoline, and electric-powered forklifts
- Interfaces with scanners, printers, automation controls and other peripherals
- Continuous operation at -30°C (-22°F) (cold storage terminals)
- Full terminal emulation capabilities.

About This Guide

This guide provides instructions for the following:

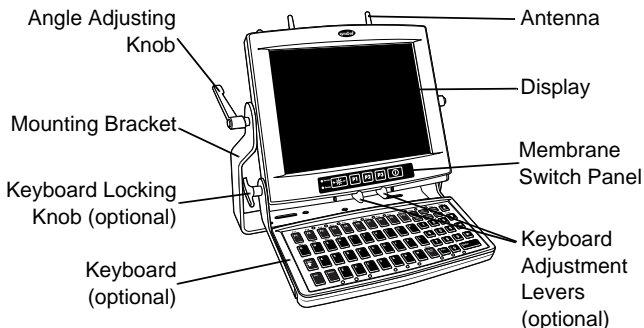
- *Parts of the VRC 8900* on page 2
- *Required Accessories* on page 3
- *Optional Accessories* on page 3
- *Charging the Internal Battery* on page 4
- *Connecting Power to the Terminal* on page 5
- *Calibrating the Touch Screen* on page 6
- *Resetting the Terminal* on page 7
- *Programmable Keys* on page 7
- *The Optional Keyboard* on page 9
- *Connecting Accessories* on page 12
- *Maintaining the Terminal* on page 13
- *Troubleshooting* on page 14.

For more information including installation instructions, refer to the *VRC 8900 Radio Terminal Product Reference Guide*, p/n 72-55775-xx available at <http://www.symbol.com/manuals>.

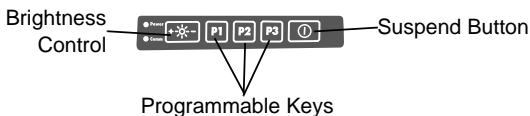
VRC 8900 Radio Terminal

Parts of the VRC 8900

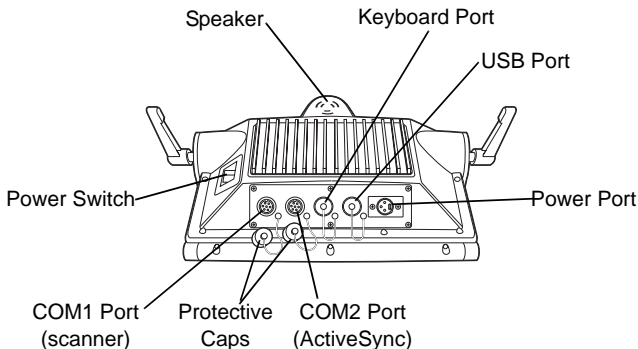
Front View



Membrane Switch Panel



Bottom View



Required Accessories

The VRC 8900 comes with an installation kit which includes all necessary connectors and cables. See the *VRC 8900 Product Reference Guide* for a list of contents.

Optional Accessories

You can order these optional accessories from Symbol:

- External keyboard with bracket assembly:
Non-heated: KYBD8900-00
Heated: KYBD8900-01
- Scanners:
LS-3203ER-I200EI: 25-52923-01
P302FZY-I001: 25-52741-01
P304PRO-I000: 25-55774-01
P370ALR-I000
- Scanner cable (scanner specific)
- RS-232 ActiveSync cable: 25-51869-01
- USB cable:
ActiveSync: 25-56101-01
Host: 25-56102-01
- AC universal power supply:
Power supply: 50-14001-004
Output cable: 50-16002-024
Line cord: 23844-00-00
- Filter box (used on gasoline-powered trucks to shut off the terminal when the forklift ignition is turned off, and to filter noise on power cables): FB7900
- Installation Kit (see the *VRC 8900 Product Reference Guide* for a list of contents).

V R C 8 9 0 0 R a d i o T e r m i n a l

Note: Use only a Symbol-approved power supply, output rated 12V dc and minimum 9A (p/n 50-14001-004). The power supply is certified to EN60950 with SELV outputs.

Benutzen Sie nur eine Symbol Technologies genehmigt Stromversorgung in den Ausgabe: 12V dc und minimum 9A (p/n 50-14001-004). Die Stromversorgung ist bescheinigt nach EN60950 mit SELV Ausgaben.

Note: The terminal and bracket must be firmly secured to a surface that can support the terminal's weight.

WARNING

The VRC 8900 is intended for use on vehicles primarily operating indoors, or for fixed indoor installation. the VRC 8900 should not be installed in fixed outdoor locations, or on a vehicle primarily operating outdoors, unless additional environmental protection is provided.

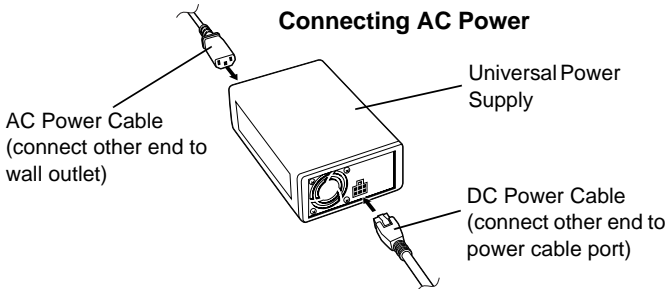
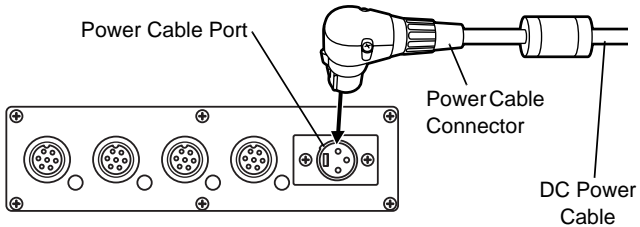
Charging the Internal Battery

When you receive your terminal, the internal battery is fully discharged. Leave the terminal powered on for 24 hours to fully charge the internal battery. Note that the terminal can charge the battery while in Suspend mode, but not if power is removed.

The internal battery maintains the RAM memory for 72 hours when fully charged. The data in the Flash memory or Flash file system is not affected by the state of charge.

Note: If the VRC8900 is being stored, it is important to recharge the internal battery every three to four months. Battery degradation or failure may result.

Connecting Power to the Terminal



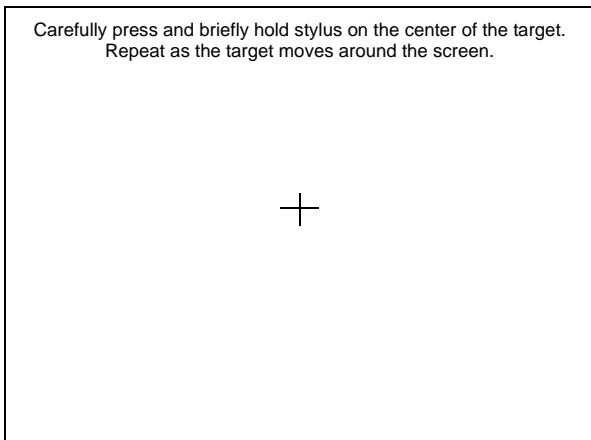
Powering the Terminal On/Off

1. Turn on the Power Switch on the back of the terminal.
2. Press the Suspend Button on the membrane panel to power on the terminal.

To suspend the terminal's operation, press and hold the Suspend Button until the "Release for Suspend" message appears.

Calibrating the Touch Screen

The terminal prompts you to calibrate the touch screen when you first power on the terminal and when using the default registry.



1. Carefully press and hold the stylus on the center of each target. Repeat as the target moves around the screen.
2. Tap the screen to accept the settings when the calibration is complete.

Controlling Screen Brightness

Press **+** on the Brightness Control button on the membrane panel to brighten the screen, or **-** to darken it.

Brightness Control



Resetting the Terminal

If your terminal stops responding to input from buttons on the screen, perform a warm boot or cold boot.

Performing a Warm Boot

A warm boot restarts the terminal and saves all stored records and entries. In the Windows CE environment, the working registry is replaced by the latest saved copy of the registry.

Note: Files that remain open during a warm boot may not be retained.

To perform a warm boot, press and hold down the Suspend Button until the *Release for Warm Boot* message appears (6 seconds).

Performing a Cold Boot

A cold boot restarts the terminal. The working registry is replaced by the latest saved copy of the registry. Unsaved information is discarded.

There are two ways to perform a cold boot:

- Press and hold the Suspend Button until the *Release for Cold Boot* message appears (15 seconds).
- Turn off the Power Switch on the back of the terminal, then turn it on again, and then press the Suspend button.

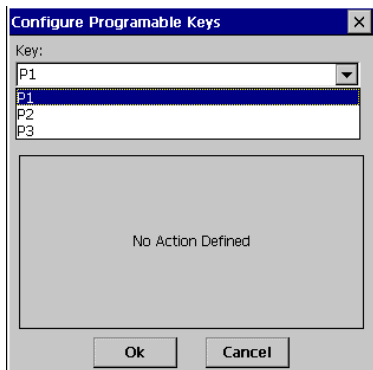
Programmable Keys

The programmable keys on the membrane panel (P1, P2, P3) can be set to perform certain functions, such as printing, toggling the virtual keyboard, or running a frequently used key sequence.

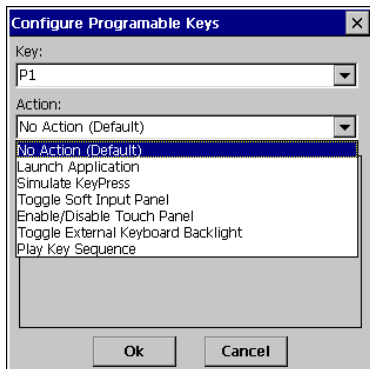
To set a programmable key:

1. From the *Start* menu, select *Settings, Control Panel*.
2. Select the *Programmable Keys* icon.

3. Select the P key you'd like to program from the *Key*: drop-down menu.



4. Select the function you'd like the P key to perform from the *Action* drop-down menu.



5. Tap OK.

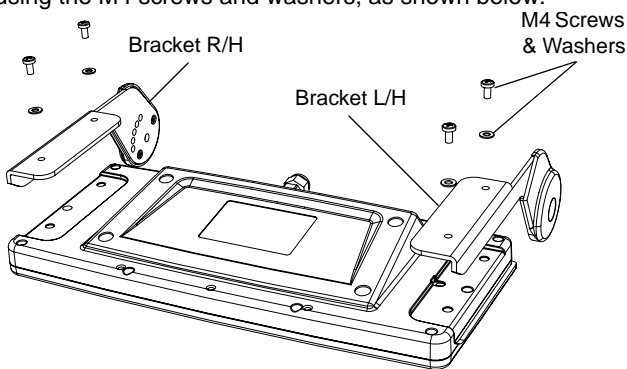
The Optional Keyboard

The keyboard bracket assembly contains the following items:

- Optional keyboard
- Keyboard brackets
- 4 M4 screws and washers
- Knobs
- Adjustment mechanism
- Side plates
- Bracket knobs
- 5 button-head screws
- 2 flathead screws.

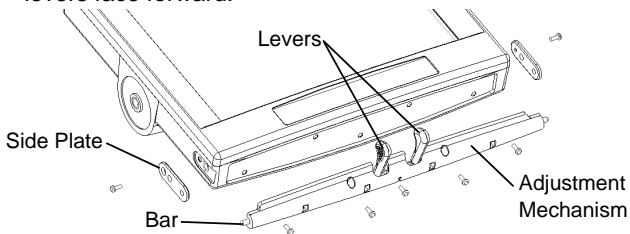
Attaching the Keyboard

1. Attach the keyboard brackets to the bottom of the keyboard, using the M4 screws and washers, as shown below:

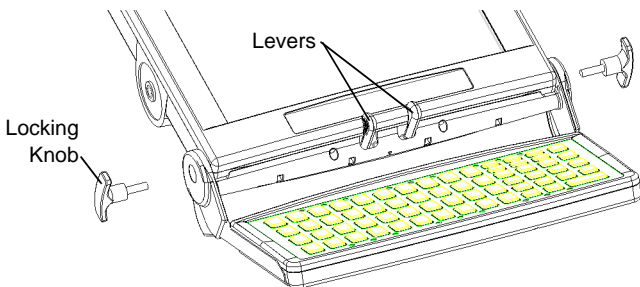


V R C 8 9 0 0
R a d i o T e r m i n a l

2. Secure the adjustment mechanism to the bottom of the display using the 5 button-head screws. Ensure the adjustment levers face forward.



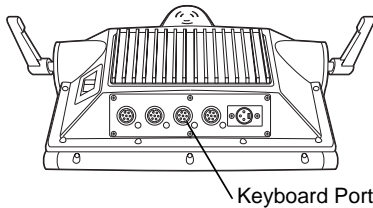
3. Secure a side plate to each side of the display by inserting a flathead screw through the top hole of the side plate. Ensure the bar from the adjustment mechanism runs through the bottom hole of each side plate.
4. Squeeze the levers on the adjustment mechanism and align the keyboard brackets on either side of the display. Release the levers to insert the bar on the mechanism through an adjustment hole on each of the brackets.



5. Insert the keyboard locking knobs through the bracket's top hole, and through the side plate's middle hole, into the terminal display.

Q u i c k R e f e r e n c e

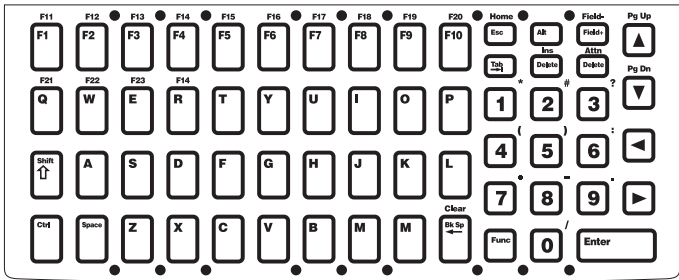
6. Plug the keyboard cable into the Keyboard port on the VRC 8900.



Adjusting the Keyboard

To adjust the keyboard, loosen the locking knobs, squeeze the adjustment levers, then move the keyboard to the desired position. Tighten the locking knobs.

Using the Optional Keyboard



Key	Description
Shift, Ctrl, Alt	Use in conjunction with other keys. Select alternate characters or functions identified by the information at the top of the keys. Use Ctrl - Esc key combination to access the Start menu.
A through Z	Enters alpha and text characters.

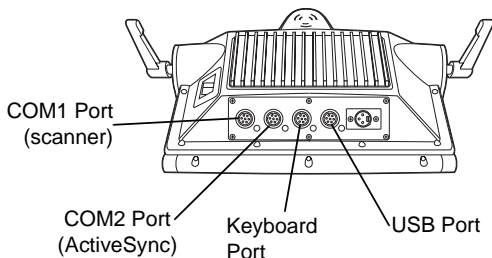
V R C 8 9 0 0 R a d i o T e r m i n a l

Key	Description
0 through 9	Enters numeric characters.
◀ ▶ ▽ ▹	Moves the cursor around the screen or highlights the lines in a menu.
F1 through F24	Programmable function keys. The application determines use; see the software or application documentation.
Enter	Moves the cursor to the next data field or screen.
Func	Activates the function shown above the next key pressed.
Del	Deletes the character to the right of the cursor.
← or Backspace	Deletes the character to the left of the cursor.
Space	Enters a space between characters or words.

Connecting Accessories

Connect an optional scanner, ActiveSync serial cable, or USB device using the appropriate port on the bottom of the VRC 8900. Cables are available from Symbol.

You may also use the USB port for ActiveSync connection, if the COM2 port is used for another purpose. This cable is also available from Symbol.



Maintaining the Terminal

The terminal is factory-sealed and contains no user-serviceable parts. Only qualified Symbol Service Centers should service the terminal.

Protective caps are attached to the ports on the back of the terminal. Place them over unused ports for protection.

Clean the casing, keyboard, and display window by wiping with a soft cloth. Use a damp cloth if necessary.

Never use solvents or abrasive cleaners. You may damage the display or keyboard. Never use a pressure hose to clean the unit.

Troubleshooting

Problem	Cause	Solution
VRC 8900 does not power on or shuts off suddenly.	Power switch on back of terminal is in the Off position.	Turn the power switch on.
	Power cable not connected or unplugged.	Connect power cable to power cable port on underside of terminal. Press the Suspend Button to boot up the terminal.
	If terminal is powered by a vehicle battery, the vehicle battery is depleted.	Replace or charge the vehicle battery.
Cannot see characters on display.	Terminal not powered on.	Check that the power switch on the back of the VRC 8900 is in the On position. Press the Suspend Button.
	Screen is too bright/dark.	Adjust the brightness; see Controlling Screen Brightness on page 6 .
	Display not adjusted properly.	Select Display in the Control Panel settings and adjust the display.
	Terminal is in Suspend mode (indicated by a yellow Power LED)	Press the Suspend Button to turn on the terminal.
Application does not respond.	Terminal is not communicating with the AP (Communication LED is solid red).	Bring the terminal closer to the AP. If problem continues, contact your System Administrator.
Optional scanner does not operate.	Scanner is not properly connected to the terminal.	Connect the scanner to the COM1 port and power up the terminal. If the problem continues, refer to the scanner Quick Reference Guide or see your System Administrator.

END-USER LICENSE AGREEMENT

- You have acquired a device ("DEVICE") that includes software licensed by Symbol Technologies, Inc. ("SYMBOL") from Microsoft Licensing Inc. or its affiliates ("MS"). Those installed software products of MS origin, as well as associated media, printed materials, and "online" or electronic documentation ("SOFTWARE") are protected by international intellectual property laws and treaties. The SOFTWARE is licensed, not sold. All rights reserved.
- IF YOU DO NOT AGREE TO THIS END USER LICENSE AGREEMENT ("EULA"), DO NOT USE THE DEVICE OR COPY THE SOFTWARE. INSTEAD, PROMPTLY CONTACT SYMBOL FOR INSTRUCTIONS ON RETURN OF THE UNUSED DEVICE(S) FOR A REFUND. **ANY USE OF THE SOFTWARE, INCLUDING BUT NOT LIMITED TO USE ON THE DEVICE, WILL CONSTITUTE YOUR AGREEMENT TO THIS EULA (OR RATIFICATION OF ANY PREVIOUS CONSENT).**
- **GRANT OF SOFTWARE LICENSE.** This EULA grants you the following license:
- SOFTWARE includes software already installed on the DEVICE ("DEVICE Software") and MS software contained on the CD-ROM disk ("Desktop Software").

SYSTEM Software. You may use the DEVICE Software as installed on the DEVICE.

Desktop Software. Desktop Software is included with your DEVICE, and you may install and use the Microsoft® Active Sync® 3.5 component on one (1) or more computers to exchange information with one (1) or more computing devices that contain a compatible version of the Microsoft® Pocket PC Software 2002 operating system. For other software component(s) contained in the Desktop Software, you may install and use such components only in accordance with the terms of the printed or online end user license agreement(s) provided with such component(s). In the absence of an end user license agreement for particular component(s) of the Desktop Software, you may install and use only one (1) copy of such component(s) on the DEVICE or a single computer with which you use the DEVICE.

Back-up Copy. If Manufacturer has not included a back-up copy of the DEVICE Software with the DEVICE, you may make a single back-up copy of the DEVICE Software. You may use the back-up copy solely for archival purposes.

Microsoft® Outlook® 2002. If Microsoft Outlook 2002 is included with your Device, the following terms apply to your use of Microsoft Outlook 2002: (i) regardless of the information contained in "Software Installation and Use" section of the online EULA you may install one (1) copy of Microsoft Outlook 2002 on one (1) computer to use, exchange data, share data, access and interact with the DEVICE, and (ii) the EULA for Microsoft Outlook 2002 is between Manufacturer (as defined above) and the end user – not between the PC Manufacturer and end user.

DESCRIPTION OF OTHER RIGHTS AND LIMITATIONS.

- **Speech/Handwriting Recognition.** If the SOFTWARE includes speech and/or handwriting recognition component(s), you should understand that speech and handwriting recognition are inherently statistical processes; that recognition errors are inherent in the processes; that it is your responsibility to provide for handling such errors and to monitor the recognition processes and correct any errors. Neither Manufacturer nor its suppliers shall be liable for any damages arising out of errors in the speech and handwriting recognition processes.
- **Limitations on Reverse Engineering, Decompilation and Disassembly.** You may not reverse engineer, decompile, or disassemble the SOFTWARE, except and only to the extent that such activity is expressly permitted by applicable law notwithstanding this limitation.
- **Single DEVICE.** The DEVICE Software is licensed with the DEVICE as a single integrated product. The DEVICE Software installed in read only memory ("ROM") of the DEVICE may only be used as part of the DEVICE.
- **Single EULA.** The package for the DEVICE may contain multiple versions of this EULA, such as multiple translations and/or multiple media versions (e.g., in the user documentation and in the software). Even if you receive multiple versions of the EULA, you are licensed to use only one (1) copy of the DEVICE Software.
- **Rental.** You may not rent or lease the SOFTWARE.
- **Software Transfer.** You may permanently transfer all of your rights under this EULA, only as part of a sale or transfer of the DEVICE, provided you retain no copies, you transfer all of the SOFTWARE (including all component parts, the media and printed materials, any upgrades or backup copies, this EULA and, if applicable, the Certificate(s) of Authenticity), and the recipient agrees to the terms of this EULA. If the Software is an upgrade, any transfer must include all prior versions

QRCG V R C 8 9 0 0 R a d i o T e r m i n a l

of the SOFTWARE.

- **Termination.** Without prejudice to any other rights, Manufacturer or MS may terminate this EULA if you fail to comply with the terms and conditions of this EULA. In such event, you must destroy all copies of the SOFTWARE and all of its component parts.

UPGRADES AND RECOVERY MEDIA.

- **DEVICE Software.** If the DEVICE Software is provided by Manufacturer separate from the DEVICE on media such as a ROM chip, CD ROM disk(s) or via web download or other means, and is labeled "For Upgrade Purposes Only" or "For Recovery Purposes Only", you may install one copy of such DEVICE Software onto the DEVICE as a replacement copy for the existing DEVICE Software and use it in accordance with Section 1 of this EULA.
- **Desktop Software.** If any Desktop Software component(s) is provided by Manufacturer separate from the DEVICE on CD ROM disk(s) or via web download or other means, and labeled "For Upgrade Purposes Only" or "For Recovery Purposes Only", you may (i) install and use one copy of such component(s) on the computer(s) you use to exchange data with the DEVICE as a replacement copy for the existing Desktop Software component(s).

COPYRIGHT. All title and intellectual property rights in and to the SOFTWARE (including but not limited to any images, photographs, animations, video, audio, music, text and "applets," incorporated into the SOFTWARE), the accompanying printed materials, and any copies of the SOFTWARE, are owned by MS or its suppliers (including Microsoft Corporation). You may not copy the printed materials accompanying the SOFTWARE. All title and intellectual property rights in and to the content which may be accessed through use of the SOFTWARE is the property of the respective content owner and may be protected by applicable copyright or other intellectual property laws and treaties. This EULA grants you no rights to use such content. All rights not specifically granted under this EULA are reserved by MS and its suppliers (including Microsoft Corporation).

EXPORT RESTRICTIONS. You agree that you will not export or re-export the SOFTWARE to any country, person, or entity subject to U.S. export restrictions. You specifically agree not to export or re-export the SOFTWARE: (i) to any country to which the U.S. has embargoed or restricted the export of goods or services, which as of May 1999 include, but are not necessarily limited to Cuba, Iran, Iraq, Libya, North Korea, Sudan, Syria, and the Federal Republic of Yugoslavia (including Serbia, but not Montenegro), or to any national of any such country, wherever located, who intends to transmit or transport the products back to such country; (ii) to any person or entity who you know of have reason to know will utilize the SOFTWARE or portion thereof in the design, development or production of nuclear, chemical or biological weapons; or (iii) to any person or entity who has been prohibited from participating in U.S. export transactions by any federal agency of the U.S. government.

NOTE ON JAVA SUPPORT. The SOFTWARE may contain support for programs written in Java. Java technology is not fault tolerant and is not designed, manufactured, or intended for use or resale as on-line control equipment in hazardous environments requiring fail-safe performance, such as in the operation of nuclear facilities, aircraft navigation or communication systems, air traffic control, direct life support machines, or weapons systems, in which the failure of Java technology could lead directly to death, personal injury, or severe physical or environmental damage.

PRODUCT SUPPORT. Product support for the SOFTWARE is not provided by MS, its parent corporation, Microsoft Corporation, or their affiliates or subsidiaries. For product support, please refer to the SYMBOL support number provided in the documentation for the DEVICE. Should you have any questions concerning this EULA, or if you desire to contact SYMBOL for any other reason, please refer to the address provided in the documentation for the DEVICE.

NO LIABILITY FOR CERTAIN DAMAGES. EXCEPT AS PROHIBIT BY LAW, MS SHALL HAVE NO LIABILITY FOR ANY INDIRECT, SPECIAL, CONSEQUENTIAL OR INCIDENTAL DAMAGES ARISING FROM OR IN CONNECTION WITH THE USE OR PERFORMANCE OF THE SOFTWARE. THIS LIMITATION SHALL APPLY EVEN IF ANY REMEDY FAILS OF ITS ESSENTIAL PURPOSE.

FOR APPLICABLE LIMITED WARRANTIES AND SPECIAL PROVISIONS PERTAINING TO YOUR PARTICULAR JURISDICTION, PLEASE REFER TO YOUR WARRANTY BOOKLET INCLUDED WITH THIS PACKAGE OR PROVIDED WITH THE SOFTWARE PRINTED MATERIALS.

Battery Information

Symbol rechargeable battery packs are designed and constructed to the highest standards within the industry.

However, there are limitations to how long your battery can operate or be stored before needing replacement. Many factors affect the actual life cycle of your battery pack, such as heat, cold, harsh environmental conditions and severe drops.

When batteries are stored over six (6) months, some irreversible deterioration in overall battery quality may occur. Store your batteries discharged in a dry, cool place, removed from the equipment to prevent loss of capacity, rusting of metallic parts and electrolyte leakage. When storing batteries for one year or longer, they should be charged and discharged at least once a year. If an electrolyte leakage is observed, avoid any contact with affected area and properly dispose of the battery.

An indication that your Symbol battery needs replacement is when normal run time begins to diminish. When you consistently experience significant loss of run time, replace your battery.

Standard warranty period for all Symbol batteries is 30 days, regardless if the battery was purchased separately or included as part of the mobile computer or bar code scanner.

For more information on Symbol batteries, please visit <http://mysymbolcare.symbol.com/battery/batbasics1.html>.

Ergonomic Recommendations

Caution: Even the best-designed products can be a potential source of injury/illness if used incorrectly. In order to avoid or minimize risk of ergonomic injury, follow the general recommendations below. Consult with your local Health & Safety Manager to ensure that you are meeting your company's safety programs to prevent employee injury.

- Reduce or eliminate repetitive motion
- Maintain a neutral posture and avoid awkward positions
- Reduce or eliminate excessive force
- Keep objects that are used frequently within easy reach
- Perform tasks at correct heights
- Reduce or eliminate vibration
- Reduce or eliminate direct pressure
- Provide adjustable workstations
- Avoid static exertions
- Provide adequate clearance
- Provide a suitable working environment
- Improve work procedures
- Take periodic rest breaks.

Regulatory Information

All Symbol devices are designed to be compliant with rules and regulations in locations they are sold and will be labeled as required.

Regulatory Information is available in French, Italian, German, Spanish (Spain), Portuguese, Japanese, Korean, and simplified Chinese. Please see Web site: www.symbol.com/manuals and look for your specific product.

Any changes or modifications to Symbol Technologies equipment, not expressly approved by Symbol Technologies, could void the user's authority to operate the equipment.

Antenna's, use only the supplied or an approved replacement antenna. Unauthorized antennas, modifications, or attachments could cause damage and may violate regulations.

Radio Modules

The VRC 6900 series may contain approved radio modules. These module(s) are identified below.

- Symbol Spectrum 24 WLAN 802.11b (11Mbps DSSS) radio card, Typ: LA-4121
- Symbol Compact Flash WLAN (11Mbps DSSS) radio card, Typ: LA-4137
- CISCO LM352 WLAN 802.11b (11Mbps DSSS) radio card

Applying the Regulatory Country Stamp(s)

Regulatory labels are applied to the device signifying the radio (s) are approved for use in the following countries: United States, Canada, Australia, Japan & Europe 1,2.

Note 1: For 2.4GHz Products: Europe includes, Austria, Belgium, Croatia, Denmark, Estonia, Finland, France, Germany, Greece, Iceland, Ireland, Italy, Liechtenstein, Luxembourg, Netherlands, Norway, Portugal, Spain, Sweden, Switzerland, United Kingdom.

Note 2: The use of 5GHz RLAN's has varying restrictions of use; please refer to the Symbol Declaration of Conformity (DoC) for details, at <http://www2.symbol.com/doc/>

In addition to the list above other countries may require a regulatory stamp to be affixed to the product. Please refer to www.symbol.com for the list of countries where mandatory stamps are required.

For countries that require regulatory label, a sheet of stamps may be enclosed within the package.

If the appropriate stamp(s) is/are not provided, please contact your supplier.

To apply the country stamp:

1. Peel the stamps appropriate to the country where this device is to be used.
2. Apply the country stamps in the space provided on the regulatory label



Operation of the device without a regulatory label or the correct country Stamp is illegal.

Health and Safety Recommendations

For Vehicle installations and use

1. An air bag inflates with great force. DO NOT place objects, including either installed or portable wireless equipment, in the area over the air bag or in the air bag deployment area. If in-vehicle wireless equipment is improperly installed and the air bag inflates, serious injury could result.
2. Position your device within easy reach. Be able to access your device without removing your eyes from the road.
3. Do not take notes or use the device while driving. Jotting down a "to do" list or flipping through your address book takes attention away from your primary responsibility, driving safely.



FCC RF Exposure Guidelines

Note: Only applicable for Wireless Enabled Devices

Safety Information

The device complies with Internationally recognised standards covering Specific Absorption Rate (SAR) related to human exposure to electromagnetic fields from radio devices..

Reducing RF Influence - Use Properly

It is advisable to use the device only in the normal operating position and it is recommended that no part of the human body be allowed to come too close to the antenna during operation of the equipment.

Handheld Devices

This device was tested for typical body-worn operation. The use of third-party belt-clips, holsters, and similar accessories should not contain metallic components in its assembly. The use of these accessories that do not satisfy these requirements may not comply with FCC RF exposure compliance requirements, and should be avoided.

Remote and Standalone Antenna Configurations

To comply with FCC RF exposure requirements, antennas that are mounted externally at remote locations or operating near users at stand-alone desktop or similar configurations must operate with a minimum separation distance of 20 cm from all persons.



Terminal Warnings

Persons with Pacemakers:

- Should ALWAYS keep the device more than 15cm (6 inches) from their pacemaker when turned ON
- Should not carry the device in a breast pocket
- Should use the ear furthest from the pacemaker to minimise the potential for interference.
- If you have any reason to suspect that interference is taking place, turn OFF your device.

Hearing Aids

The device may interfere with some hearing aids. In the event of interference you may want to consult your hearing aid supplier to discuss solutions.

Other Medical Devices

The device transmits radio frequency energy and has the potential to interfere with inadequately protected medical devices. Consult your physician or the manufacturer of the device to see if the particular device has sufficient protection.

It is good practice to turn OFF the device within a hospital or other medical facility where sensitive medical equipment is in use. In some countries, this is a legal requirement applying to all mobile phones and related equipment.

Warning Notices

Please observe all warning notices with regard to the usage of mobile phones.

Potentially Hazardous Atmospheres

You are advised not to use this device at a refuelling point. You are reminded of the need to observe restrictions on the use of radio devices in fuel depots, chemical plants etc. and areas where the air contains chemicals or particles (such as grain, dust, or metal powders) and any other area where you would normally be advised to turn off your vehicle engine.

Radio Frequency Interference Requirements



Note: This equipment has been tested and found to comply with the limits for a Class B digital device, pursuant to Part 15 of the FCC rules. These limits are designed to provide reasonable protection against harmful interference in a residential installation. This equipment generates, uses and can radiate radio frequency energy and, if not installed and used in accordance with the

instructions, may cause harmful interference to radio communications. However there is no guarantee that interference will not occur in a particular installation. If this equipment does cause harmful interference to radio or television reception, which can be determined by turning the equipment off and on, the user is encouraged to try to correct the interference by one or more of the following measures:

- Reorient or relocate the receiving antenna
- Increase the separation between the equipment and receiver
- Connect the equipment into an outlet on a circuit different from that to which the receiver is connected
- Consult the dealer or an experienced radio/TV technician for help.

Note: This equipment has been tested and found to comply with the limits for a Class A digital device, pursuant to Part 15 of the FCC rules. These limits are designed to provide reasonable protection against harmful interference when the equipment is operated in commercial environment. This equipment generates, uses, and can radiate radio frequency energy and, if not installed and used in accordance with the instruction manual, may cause harmful interference to radio communications. Operation of this equipment in a residential area is likely to cause harmful interference in which case the user will be required to correct the interference at his own expense.

Radio Transmitters (Part 15)

This device complies with Part 15 of the FCC Rules. Operation is subject to the following two conditions: (1) this device may not cause harmful interference, and (2) this device must accept any interference received, including interference that may cause undesired operation.

Radio Frequency Interference Requirements - Canada

This Class B digital apparatus complies with Canadian ICES-003.

Cet appareil numérique de la classe B est conforme à la norme NMB-003 du Canada.

Radio Transmitters

This device complies with RSS 210 of Industry & Science Canada. Operation is subject to the following two conditions: (1) this device may not cause harmful interference and (2) this device must accept any interference received, including interference that may cause undesired operation.

Label Marking: The Term "IC:" before the radio certification only signifies that Industry Canada technical specifications were met.



Marking and European Economic Area (EEA)

The use of 2.4GHz RLAN's, for use through the EEA, have the following restrictions:

- Maximum radiated transmit power of 100 mW EIRP in the frequency range 2.400 -2.4835 GHz
- France, equipment is restricted to 2.4465 -2.4835 GHz frequency range
- Belgium outside usage, the equipment is restricted to 2.460 -2.4835 GHz frequency range
- Italy requires a user license for outside usage.

The use of 5GHz RLAN's has varying restrictions for use within the EEA; please refer to the Symbol Declaration of Conformity (DoC) for details at <http://www2.symbol.com/doc/>

Statement of Compliance

Symbol Technologies, Inc., hereby, declares that this device is in compliance with the essential requirements and other relevant provisions of Directives 1999/5/EC, 89/336/EEC and 73/23/EEC.

Declaration of Conformities may be obtained from <http://www2.symbol.com/doc/>

Other Countries

All 2.4GHz Radio Devices:

- Mexico - Restrict Frequency Range to: 2.450 - 2.4835 GHz.
- Israel - Restrict Frequency Range to: 2.418 - 2.457 GHz.
- Sri Lanka- Restrict Frequency Range to: 2.400 - 2.430 GHz.



Waste Electrical and Electronic Equipment (WEEE)

English: For EU Customers: All products at the end of their life must be returned to Symbol for recycling. For information on how to return product, please go to: http://www.symbol.com/environmental_compliance.

Čeština: Pro zákazníky z EU: Všechny produkty je nutné po skončení jejich životnosti vrátit společnosti Symbol k recyklaci. Informace o způsobu vrácení produktu najdete na webové stránce: http://www.symbol.com/environmental_compliance.

Dansk: Til kunder i EU: Alle produkter skal returneres til Symbol til recirkulering, når de er udtjent. Læs oplysningerne om returnering af produkter på: http://www.symbol.com/environmental_compliance.

Deutsch: Für Kunden innerhalb der EU: Alle Produkte müssen am Ende ihrer Lebensdauer zum Recycling an Symbol zurückgesandt werden. Informationen zur Rücksendung von Produkten finden Sie unter http://www.symbol.com/environmental_compliance.

Q u i c k R e f e r e n c e

Eesti: EL klientidele: kõik tooted tuleb nende eluea lõppedes tagastada taaskasutamise eesmärgil Symbol'ile. Lisainformatsiooni saamiseks toote tagastamise kohta külastage palun aadressi: http://www.symbol.com/environmental_compliance.

Español: Para clientes en la Unión Europea: todos los productos deberán entregarse a Symbol al final de su ciclo de vida para que sean reciclados. Si desea más información sobre cómo devolver un producto, visite: http://www.symbol.com/environmental_compliance

Ελληνικά: Για πελάτες στην Ε.Ε.: Όλα τα προϊόντα, στο τέλος της διάρκειας ζωής τους, πρέπει να επιστρέφονται στην Symbol για ανακύκλωση. Για περισσότερες πληροφορίες σχετικά με την επιστροφή ενός προϊόντος, επισκεφθείτε τη διεύθυνση http://www.symbol.com/environmental_compliance στο Διαδίκτυο.

Français : Clients de l'Union Européenne : Tous les produits en fin de cycle de vie doivent être retournés à Symbol pour recyclage. Pour de plus amples informations sur le retour de produits, consultez : http://www.symbol.com/environmental_compliance.

Italiano: per i clienti dell'UE: tutti i prodotti che sono giunti al termine del rispettivo ciclo di vita devono essere restituiti a Symbol al fine di consentirne il riciclaggio. Per informazioni sulle modalità di restituzione, visitare il seguente sito Web: http://www.symbol.com/environmental_compliance.

Latviešu: ES klientiem: visi produkti pēc to kalpošanas mūža beigām ir jānogādā atpakaļ Symbol otrreizējai pārstrādei. Lai iegūtu informāciju par produktu nogādāšanu Symbol, lūdzu, skatiet: http://www.symbol.com/environmental_compliance.

Lietuvių: ES vartotojams: visi gaminiai, pasibaigus jų eksploatacijos laikui, turi būti gražinti utilizuoti į kompaniją „Symbol“. Daugiau informacijos, kaip gražinti gaminį, rasite: http://www.symbol.com/environmental_compliance.

Magyar: Az EU-ban vásárlóknak: Minden tönkrement terméket a Symbol vállalathoz kell eljuttatni újrahazsnosítás céljából. A termék visszajuttatásának módjával kapcsolatos tudnivalóként látogasson el a http://www.symbol.com/environmental_compliance weboldalra.

Malti: Għal klijenti fl-UE: il-prodotti kollha li jkunu waslu fl-aħħar tal-hajja ta' l-użu tagħhom, iridu jiġu rritornati għand Symbol għar-riċiklaġġ. Għal aktar taġħrif dwar kif għandek tirritorna l-prodott, jekk jogħġbok żur: http://www.symbol.com/environmental_compliance.

Nederlands: Voor klanten in de EU: alle producten dienen aan het einde van hun levensduur naar Symbol te worden teruggezonden voor recycling. Raadpleeg http://www.symbol.com/environmental_compliance voor meer informatie over het terugzenden van producten.

Polski: Klienci z obszaru Unii Europejskiej: Produkty wycofane z eksploatacji należy zwrócić do firmy Symbol w celu ich utylizacji. Informacje na temat zwrotu produktów znajdują się na stronie internetowej http://www.symbol.com/environmental_compliance.

Português: Para clientes da UE: todos os produtos no fim de vida devem ser devolvidos à Symbol para reciclagem. Para obter informações sobre como devolver o produto, visite: http://www.symbol.com/environmental_compliance.

Slovenski: Za kupce v EU: vsi izdelki se morajo po poteku življenjske dobe vrniti podjetju Symbol za reciklažo. Za informacije o vračilu izdelka obiščite: http://www.symbol.com/environmental_compliance.

Slovenščina: Pre zákazníkov z krajín EU: Všetky výrobky musia byť po uplynutí doby ich životnosti vrátené spoločnosti Symbol na recykláciu. Bližšie informácie o vrátení výrobkov nájdete na: http://www.symbol.com/environmental_compliance.

Suomi: Asiakkaat Euroopan unionin alueella: Kaikki tuotteet on palautettava kierrätettäväksi Symbol-yhtiöön, kun tuotetta ei enää käytetä. Lisätietoja tuotteiden palauttamisesta on osoitteessa http://www.symbol.com/environmental_compliance.

Svenska: För kunder inom EU: Alla produkter som uppnått sin livslängd måste returneras till Symbol för återvinning. Information om hur du returnerar produkten finns på http://www.symbol.com/environmental_compliance.

Service Information

Before you use the unit, it must be configured to operate in your facility's network and run your applications.

If you have a problem running your unit or using your equipment, contact your facility's Technical or Systems Support. If there is a problem with the equipment, they will contact the Symbol Support Center:

United States ¹	1-800-653-5350 1-631-738-2400	Canada	905-629-7226
United Kingdom	0800 328 2424	Asia/Pacific	+65-6796-9600
Australia	1-800-672-906	Austria/Österreich	1-505-5794-0
Denmark/Danmark	7020-1718	Finland/Suomi	9 5407 580
France	01-40-96-52-21	Germany/Deutschland	6074-49020
Italy/Italia	2-484441	Mexico/México	5-520-1835
Netherlands/Nederland	315-271700	Norway/Norge	+47 2232 4375
South Africa	11-8095311	Spain/España	91 324 40 00 Inside Spain
Sweden/Sverige	84452900		+34 91 324 40 00 Outside Spain
Latin America Sales Support	1-800-347-0178 Inside US +1-954-255-2610 Outside US		
Europe/Mid-East Distributor Operations	Contact local distributor or call +44 118 945 7360		

¹Customer support is available 24 hours a day, 7 days a week.

For the latest version of this guide go to: <http://www.symbol.com/manuals>.



72-55773-01
Revision C — December 2005