

SYMBOL DS3478

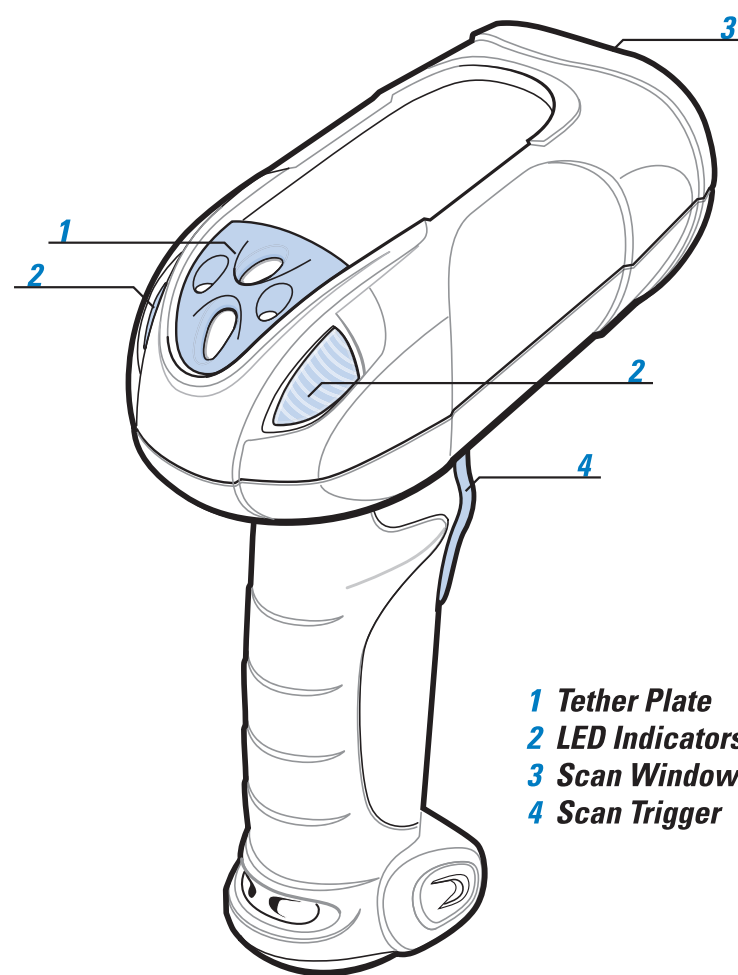
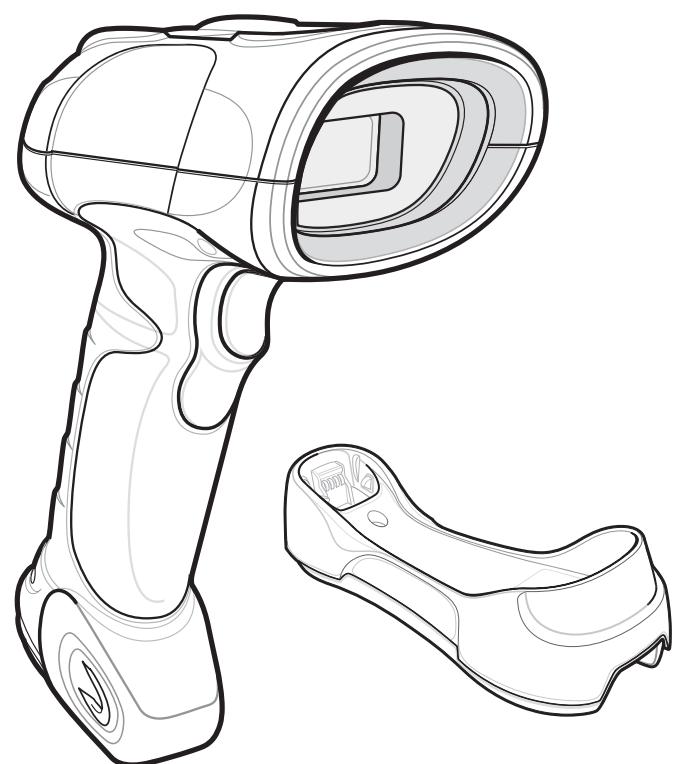
Quick Start Guide



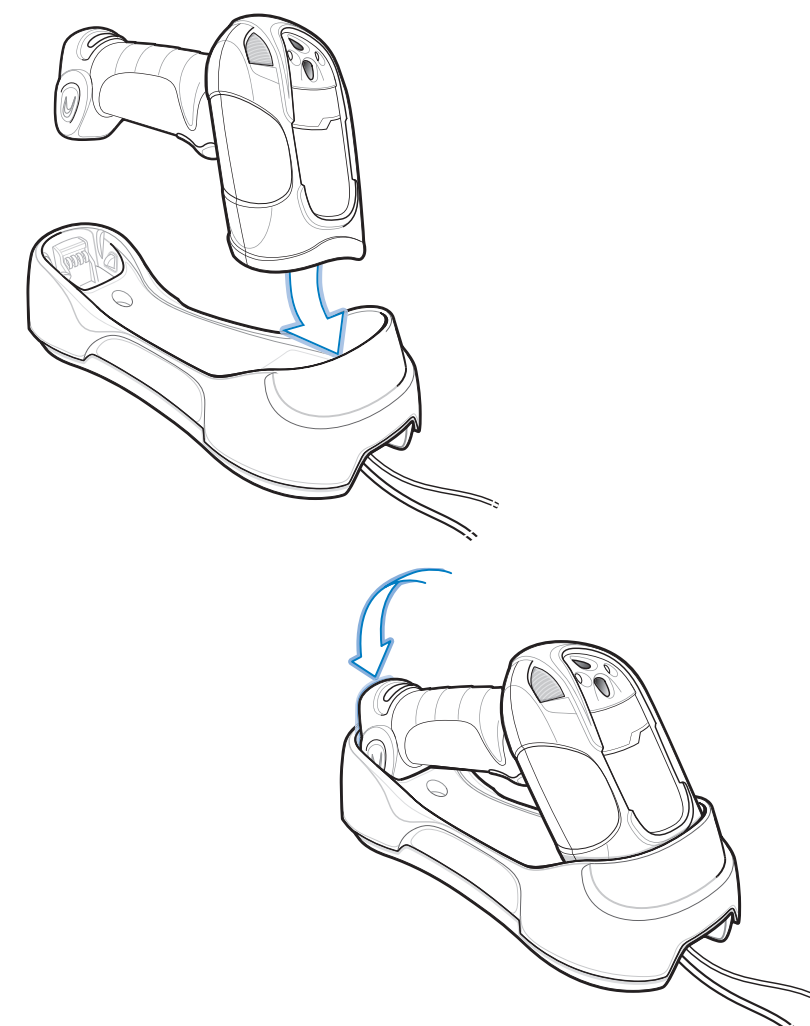
<http://www.motorola.com/ds3478>

See Product Reference Guide for detailed information

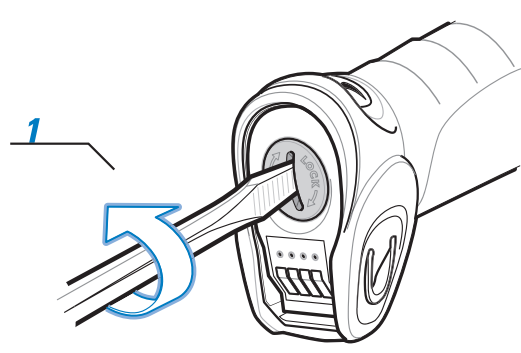
Cradle Insertion



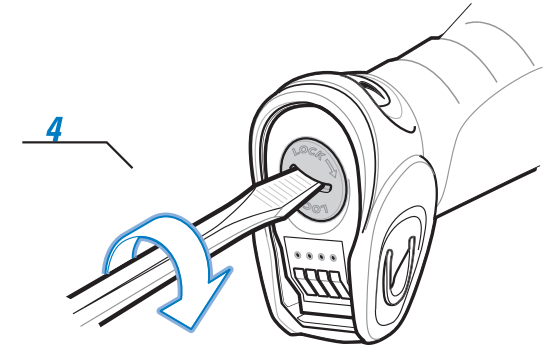
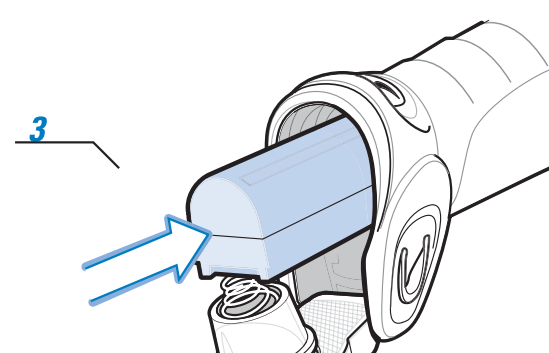
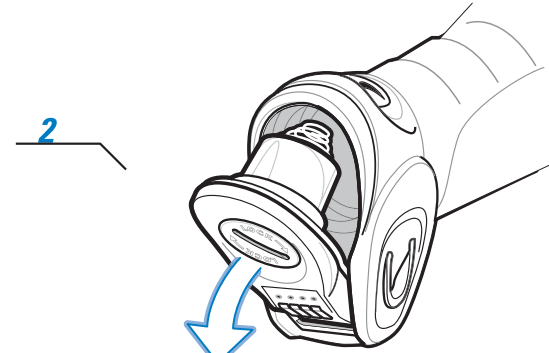
- 1 Tether Plate
- 2 LED Indicators
- 3 Scan Window
- 4 Scan Trigger



BATTERY INSERTION/REMOVAL



Or use coin

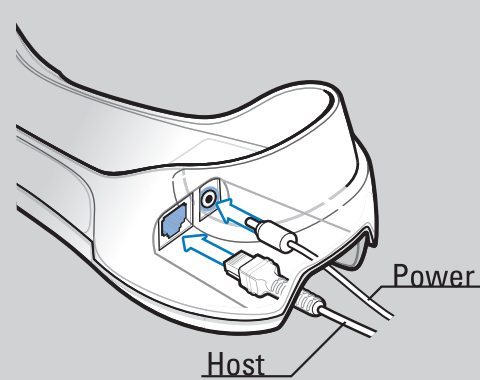


Or use coin

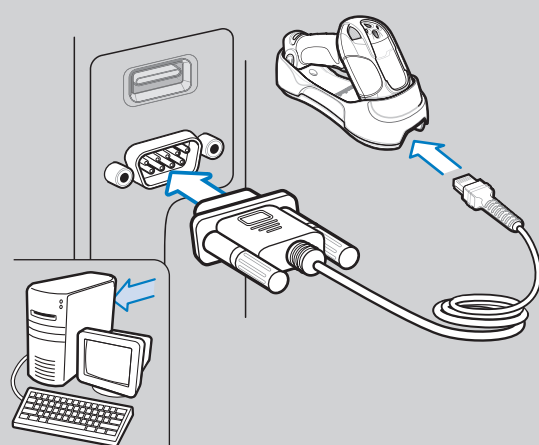
HOST INTERFACES

NOTE: Cables may vary depending on configuration

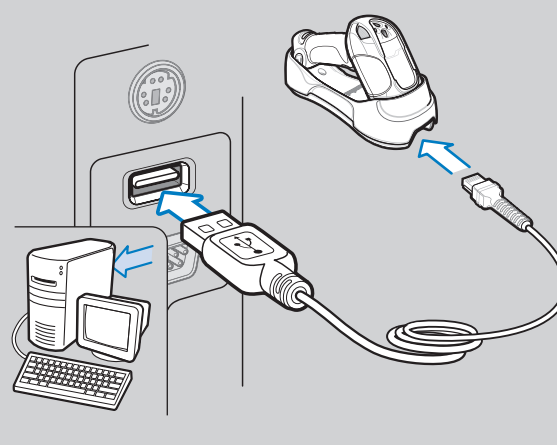
Cable Connection at Cradle



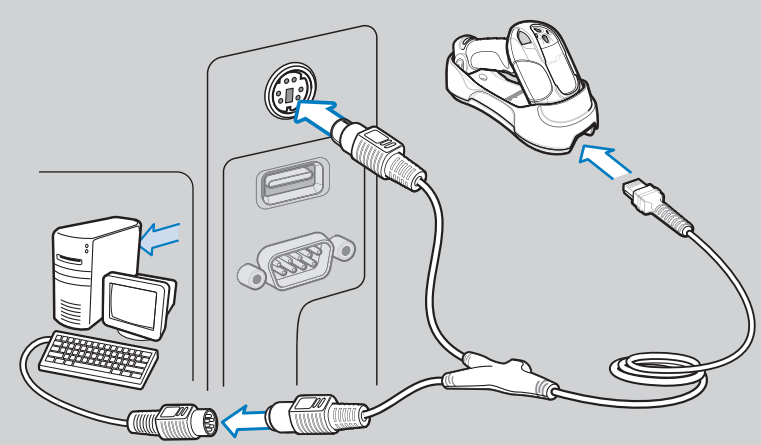
RS-232



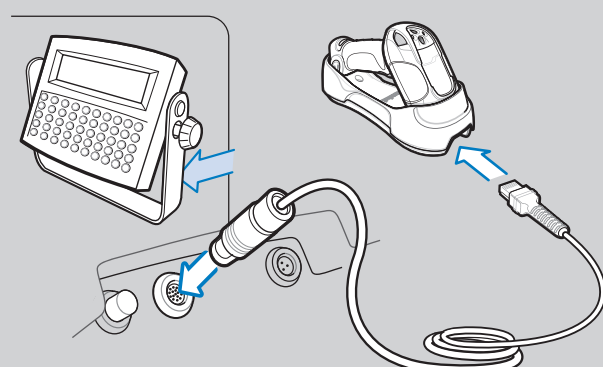
USB



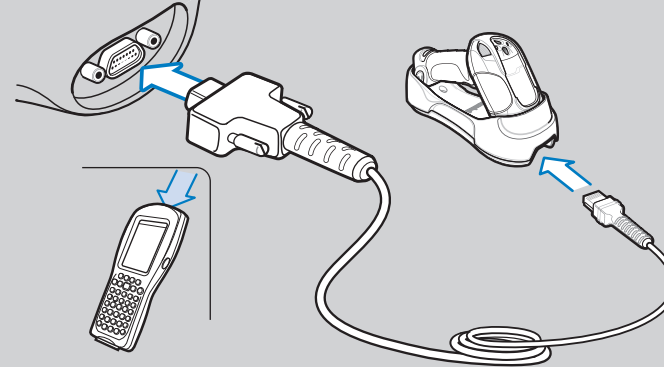
Keyboard Wedge



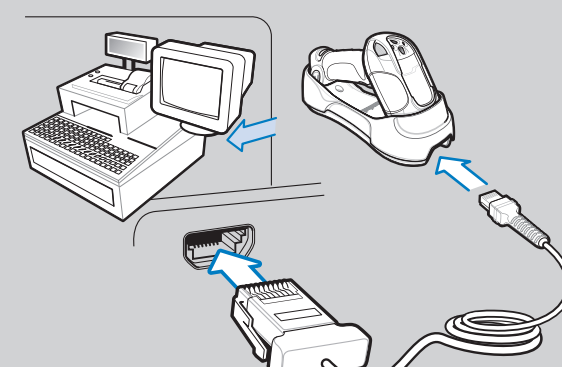
Scanner Emulation



Wand Emulation



IBM 46XX



TROUBLESHOOTING

Please refer to the DS3478 Product Reference Guide Troubleshooting section for further information.

Scanner not working

- No power to scanner
Check battery
- End cap not secured correctly
Turn end cap to secure

Scanner not decoding bar code

- Scanner not programmed for bar code type
Ensure scanner is programmed to read type of bar code being scanned
- Bar code unreadable
Ensure bar code is not defaced; try scanning test bar code of same bar code type
- Distance between scanner and bar code incorrect
Move scanner closer to or further from bar code

Scanner decoding bar code, but data not transmitted to host

- Scanner not paired to host-connected cradle
Pair the scanner to the cradle (using the PAIR bar code on the cradle)
- Cradle not programmed for correct host interface
Check scanner host parameters or edit options
- Interface cable is loose
Check for loose cable connections

If data is still not transmitting to host, it may be necessary to recycle power on the cradle

Scanner data incorrectly displayed on host

- Paired cradle host communication parameters do not match the host's parameters
Check cradle host parameters or edit options connections

SYMBOL DS3478 PROGRAMMING BAR CODES

Set Defaults



SET DEFAULTS

IBM 46XX Host Types



PORT 5B

Scanner Emulation Host Types



SCANNER EMULATION

Unpairing/Disconnection



UNPAIR/DISCONNECT



PORT 9B

Wand Emulation Host Types



SYMBOL WAND

USB Host Types



HID KEYBOARD EMULATION

Keyboard Wedge Host Types



IBM PC/AT and IBM PC COMPATIBLE



ENABLE CONVERT TO CODE 39



IBM HAND-HELD USB



DISABLE CONVERT TO CODE 39

RS-232 Host Types



STANDARD RS-232



NIXDORF RS-232 MODE B

Enter Key (Carriage Return/Line Feed)



<DATA><SUFFIX 1>



ICL RS-232



FUJITSU RS-232



NIXDORF RS-232 MODE A



OPOS/JPOS

