

Xplorer GLX™

Quick-Start Instructions

1. Unpack the Xplorer GLX



- A. GLX Users' Guide
- B. Xplorer GLX
- C. AC Power Adapter
- D. Registration Card
- E. Getting Started with the Xplorer GLX CD-ROM
- F. Two Fast-response Temperature Probes
- G. Voltage Probe
- H. USB host-connection cable

2. Connect Power and Charge the Battery

1. Connect the AC adapter to the power port on the right side of the GLX.
2. Plug the adapter into an AC power outlet.



When you connect the AC adapter, the GLX turns on automatically and the battery starts charging.

You can start using the GLX immediately, but leave it plugged in overnight (at least 14 hours) to fully charge.

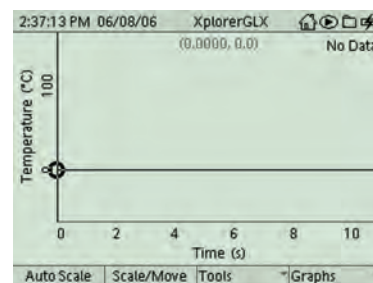
Once the battery has been charged, you can use the GLX without the AC adapter. To turn it on using battery power, push the power button at the lower-right corner of the keypad and hold it for about one second.

3. Collect Data With a Temperature Probe

1. Connect one of the included temperature probes to one of the temperature ports on the left side of the GLX.



2. The Graph display will launch automatically to plot Temperature vs. Time.

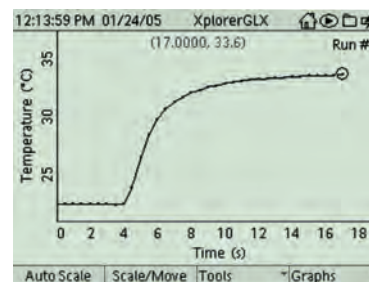


3. Press **▶**

The GLX is now recording and graphing data from the temperature probe.

4. Press **F1** to automatically scale the graph.

5. Hold the end of the temperature probe in your hand and observe how the data plotted on the Graph reacts.
6. To stop data recording, press **▶** again.



You have just collected and graphed a run of temperature data. To collect additional data runs, press **▶** again.

4. Collect Data With a PASPORT Sensor

If you have also ordered a PASPORT sensor, try the following:

1. Connect the PASPORT sensor to one of the PASPORT sensor ports.



2. If the Graph is not already displayed on the screen, press **⏠** and **F1** at the same time to go to the Graph.
3. Press **F4** then press **7** to start a new graph ready to display data from the PASPORT sensor.
4. Press **▶** to start data recording.
5. To stop data recording, press **▶** again.

5. Learn more about the GLX:

- Connecting to your computer
- Using a mouse or keyboard
- Printing directly to a printer
- Using the calculator, etc.

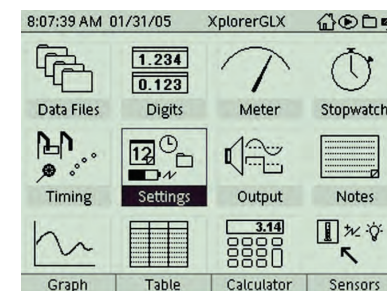
Please:

- Read the *GLX Users Guide*
- See *User's Guide for ten introductory activities using the included GLX sensors.*
- View the tutorial movies on the *Getting Started with the GLX CD-ROM*
- Visit www.pasco.com/glx

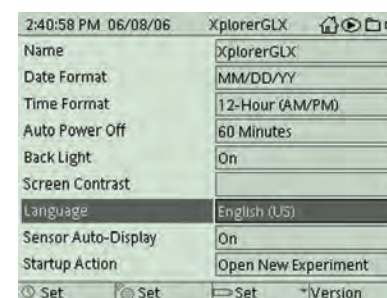
6. Select a Language

The GLX has several language options. Follow these steps to select your preferred language.

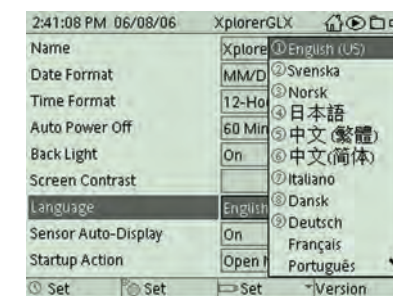
1. Press **⏠** to go to the Home Screen.
2. On the Home Screen, Press the arrows keys to highlight the Settings icon.



3. Press **✓** to open the Settings screen.
4. Press the down arrow key to highlight Language.



5. Press **✓** to open the Language menu.



6. Press the up or down arrow key to highlight your preferred language.

Not all languages in the menu are visible at once. Move the highlight to the lowest visible language and press the down arrow key for additional languages.

7. Press **✓** to select the highlighted language.

7. Update Your GLX

1. See Chapter 5 in the User's Guide.
2. Check www.pasco.com/GLX and click on "Updates".

Technical Support

For assistance with the Xplorer GLX and other PASCO products, contact PASCO Technical Support at:

Address: PASCO scientific
10101 Foothills Blvd.
Roseville, CA 95747-7100 USA

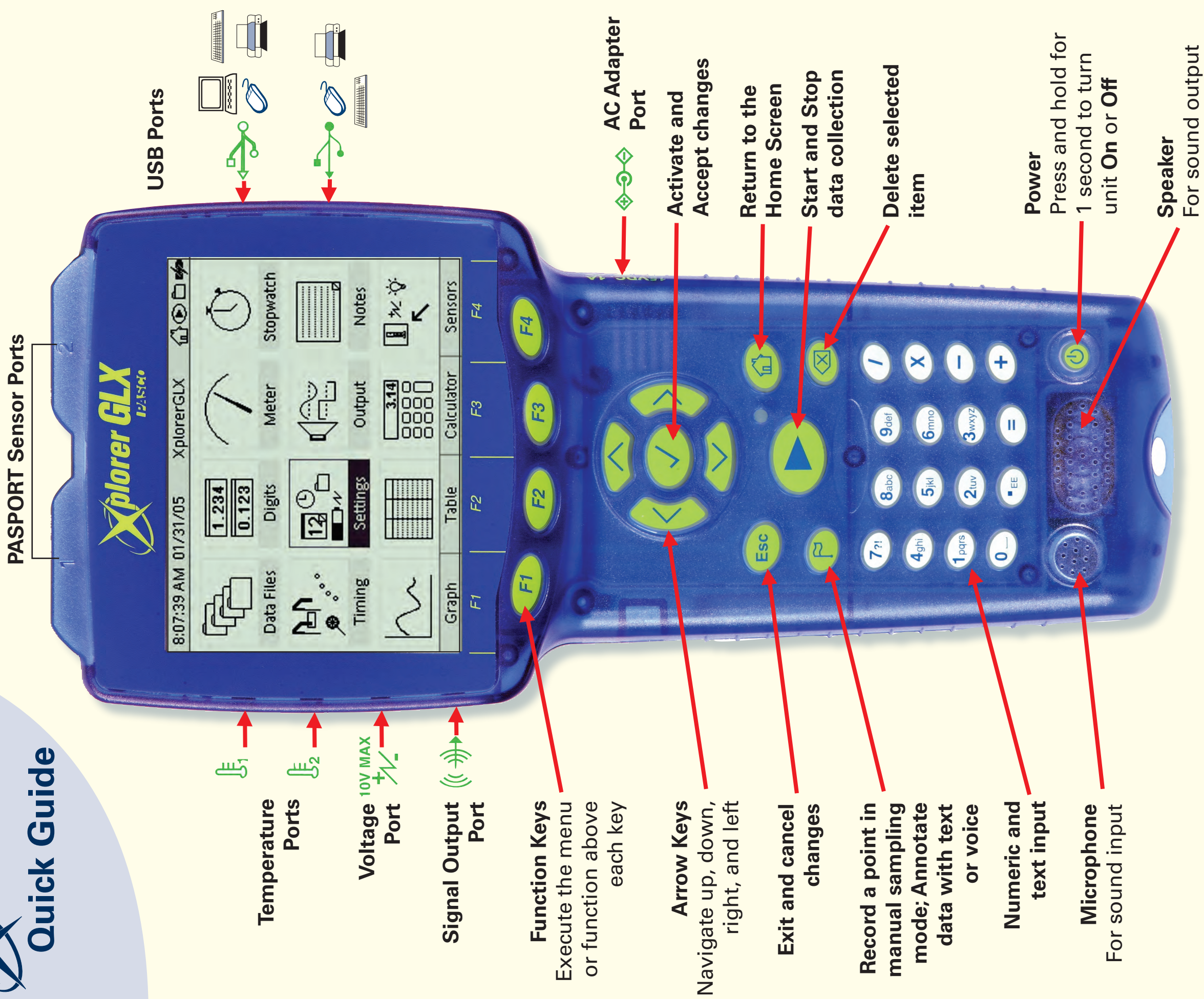
Phone: (800) 772-8700 (in the U.S.)
(916) 786-3800 (worldwide)

Fax: (916) 786-7565

Web: www.pasco.com/support/

Email: support@pasco.com

PASCO
www.pasco.com



Keypad Shortcuts

Start and Stop Data Collection	Home Screen	Sensors
Graph	Backlight	Backlight
Table	Screen Contrast	Screen Contrast
Calculator		