

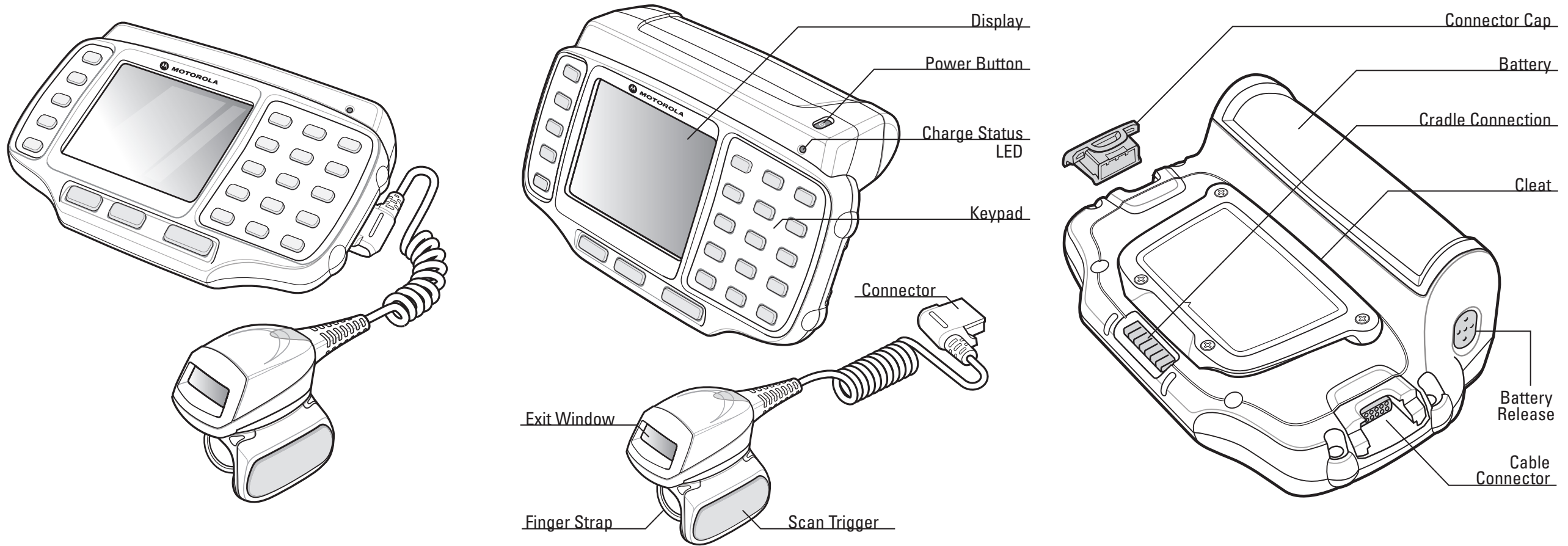
# WT4090

## Quick Start Guide

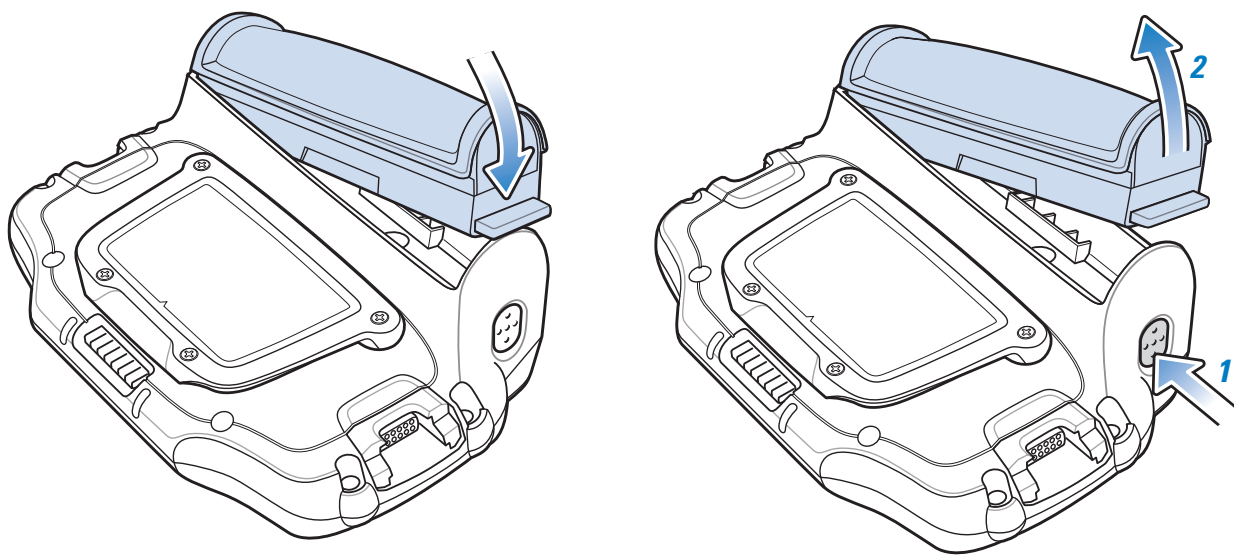


<http://www.symbol.com/wt4090> See User Guide for more information

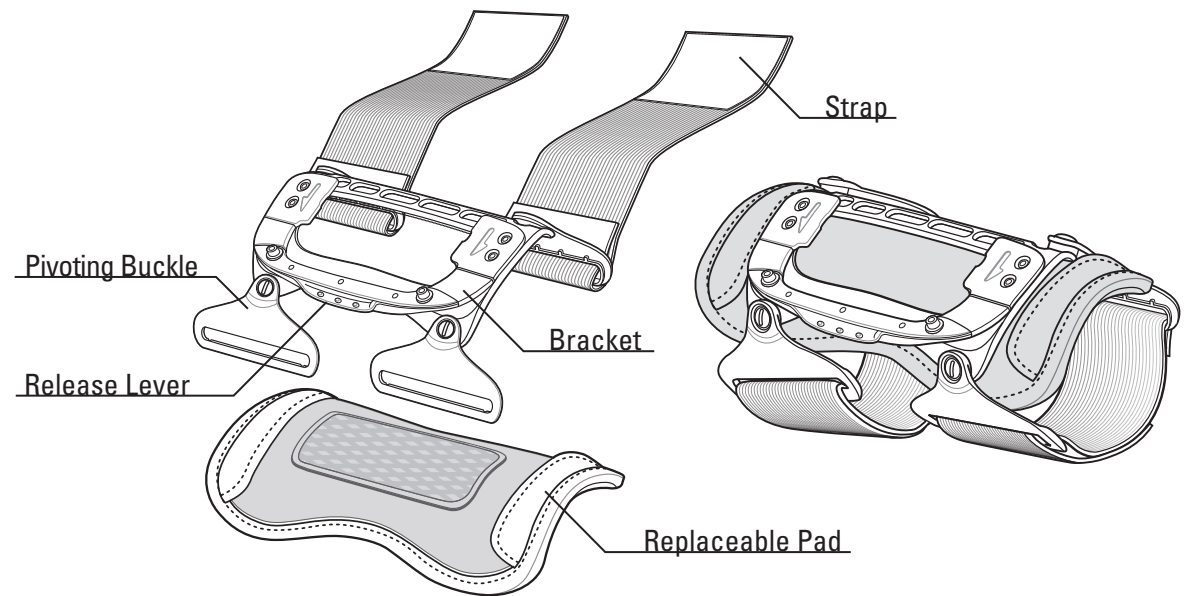
### FEATURES



### Battery Installation and Removal

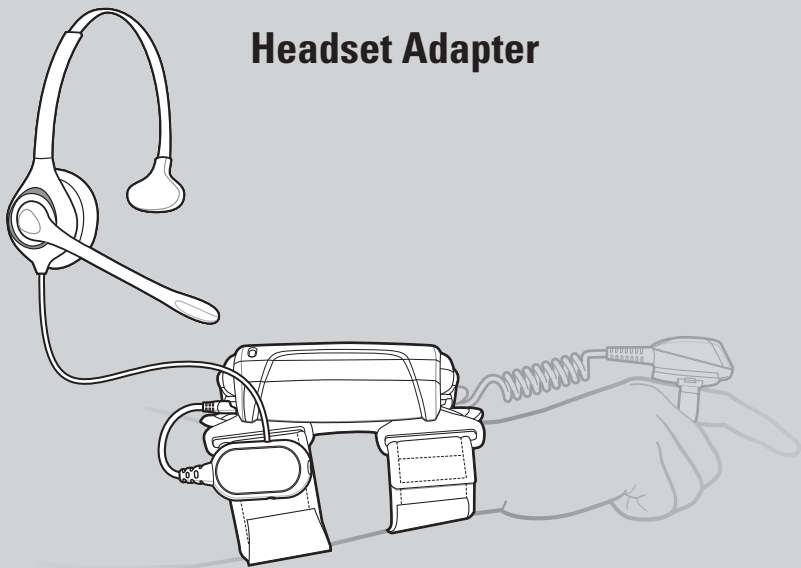


### Parts of Wrist Mount

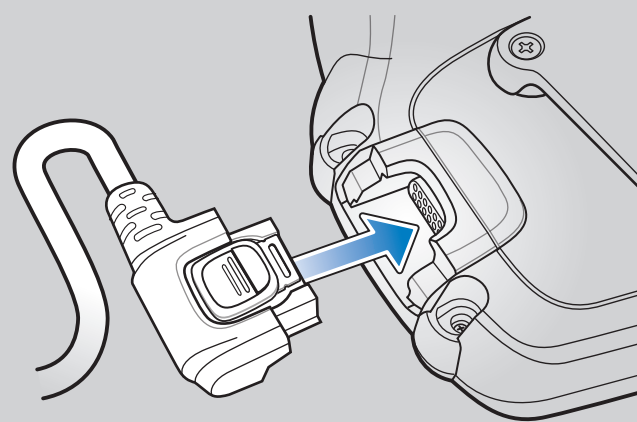


### ACCESSORY INSTALLATION

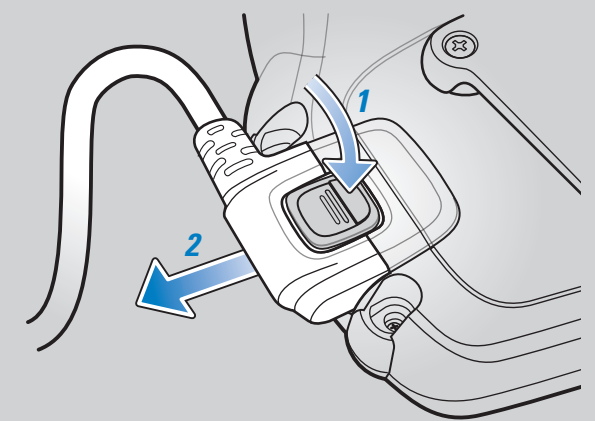
#### Headset Adapter



#### Connecting Accessory to Terminal

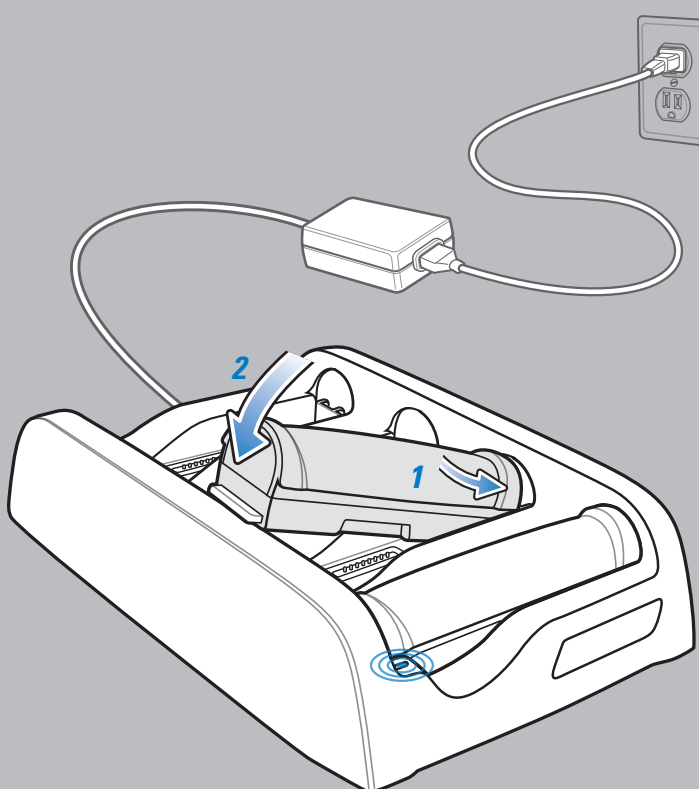


#### Disconnecting Accessory From Terminal

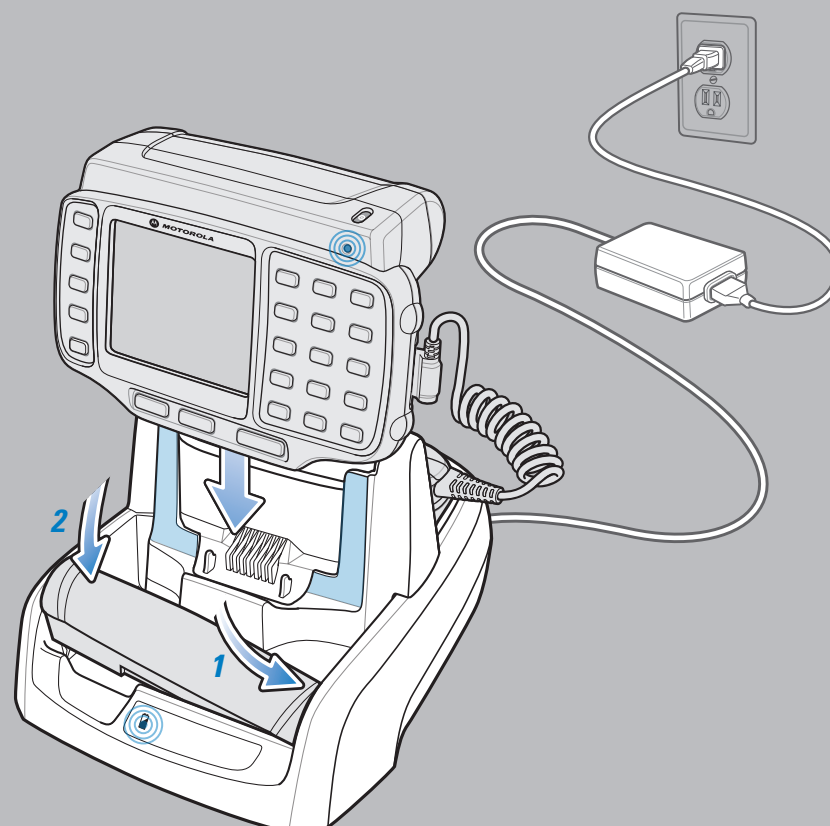


### CHARGING INSTRUCTIONS

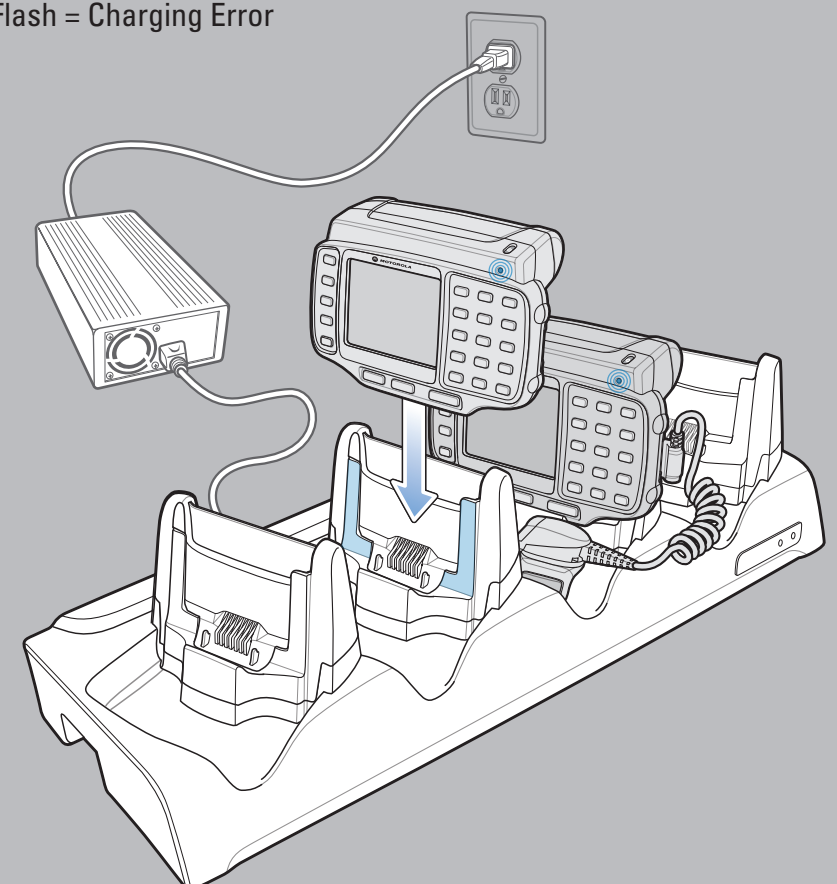
⦿ = LED Indicator Location    Slow Flash = Normal Charge    Solid Amber = Full Charge    Fast Flash = Charging Error



Four Slot Spare Battery Charger



Single Slot USB Cradle

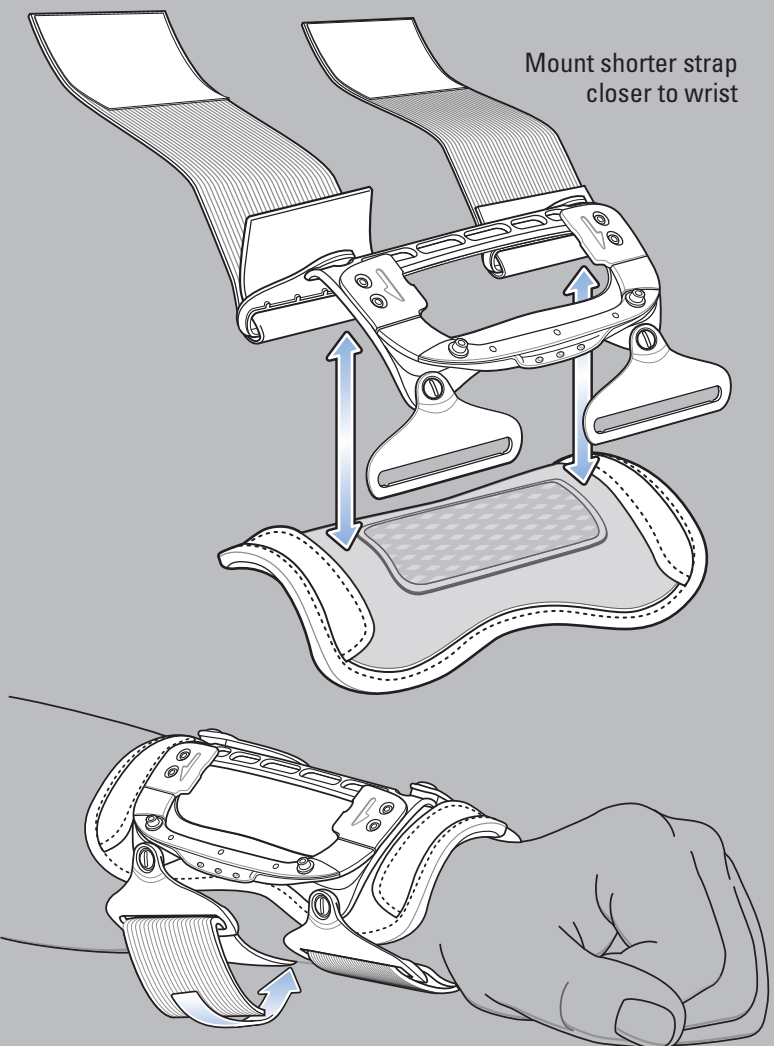


Four Slot Ethernet Cradle



# WRIST MOUNT/WEARABLE TERMINAL INSTALLATION

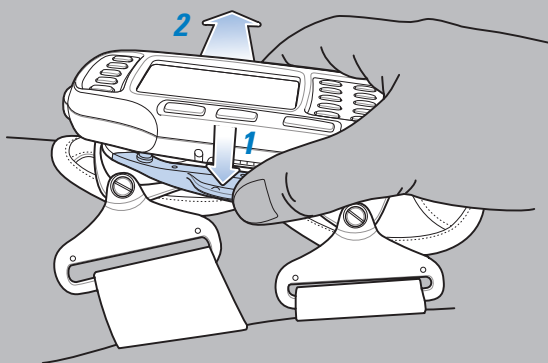
## Wrist Mount Installation



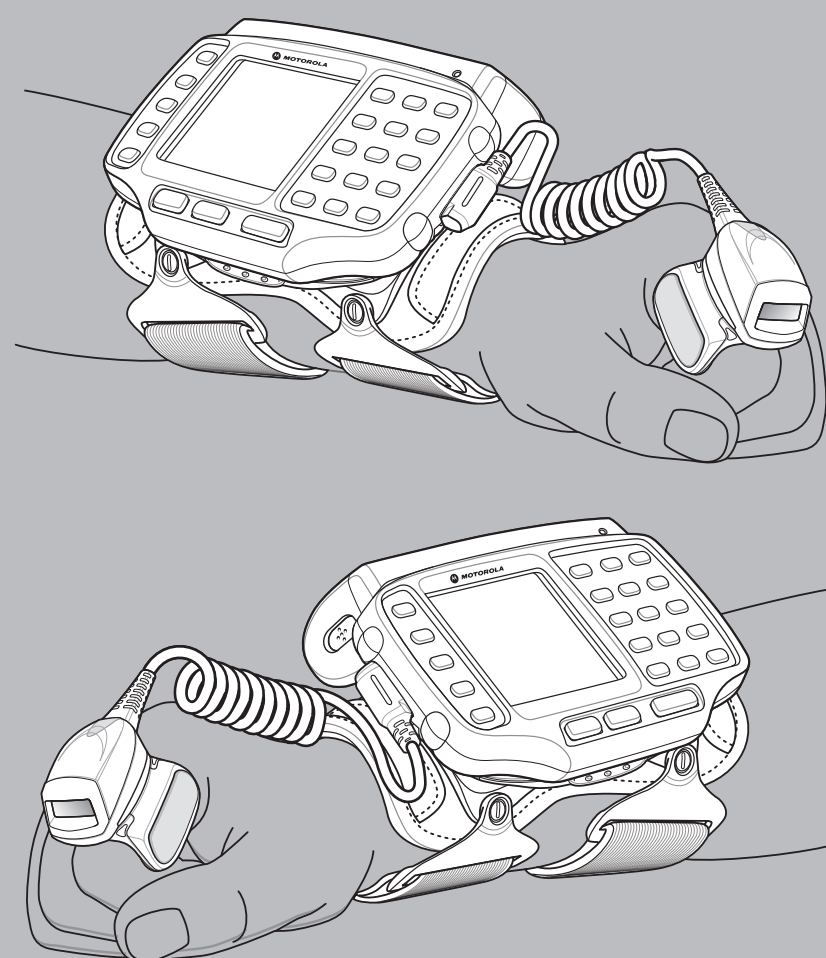
## Terminal Installation



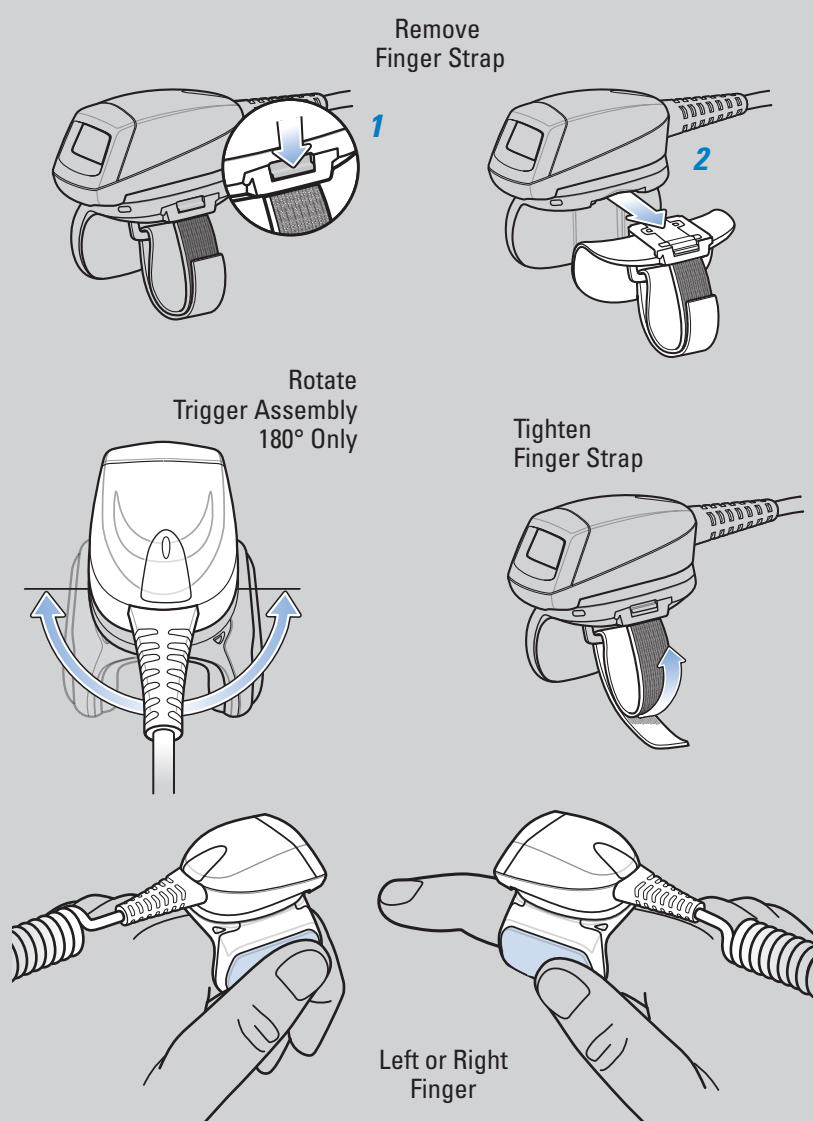
## Terminal Removal



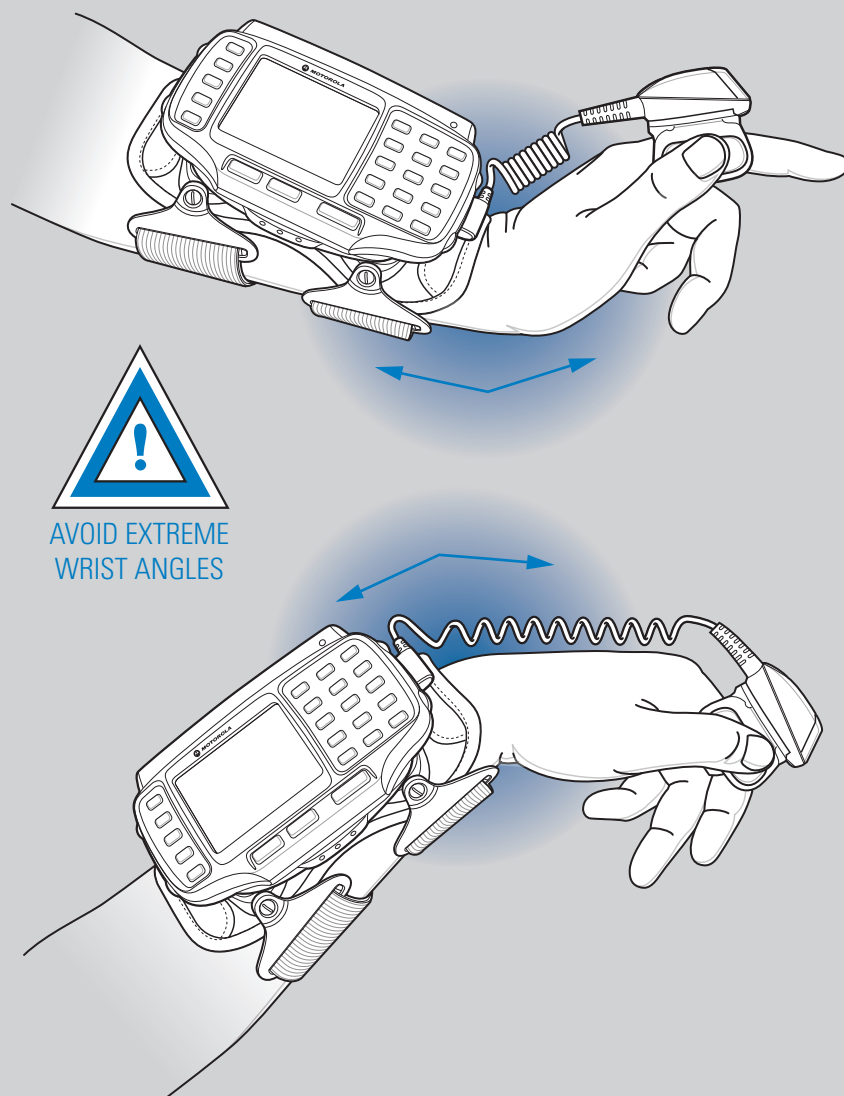
## Mounting on Left or Right Wrist



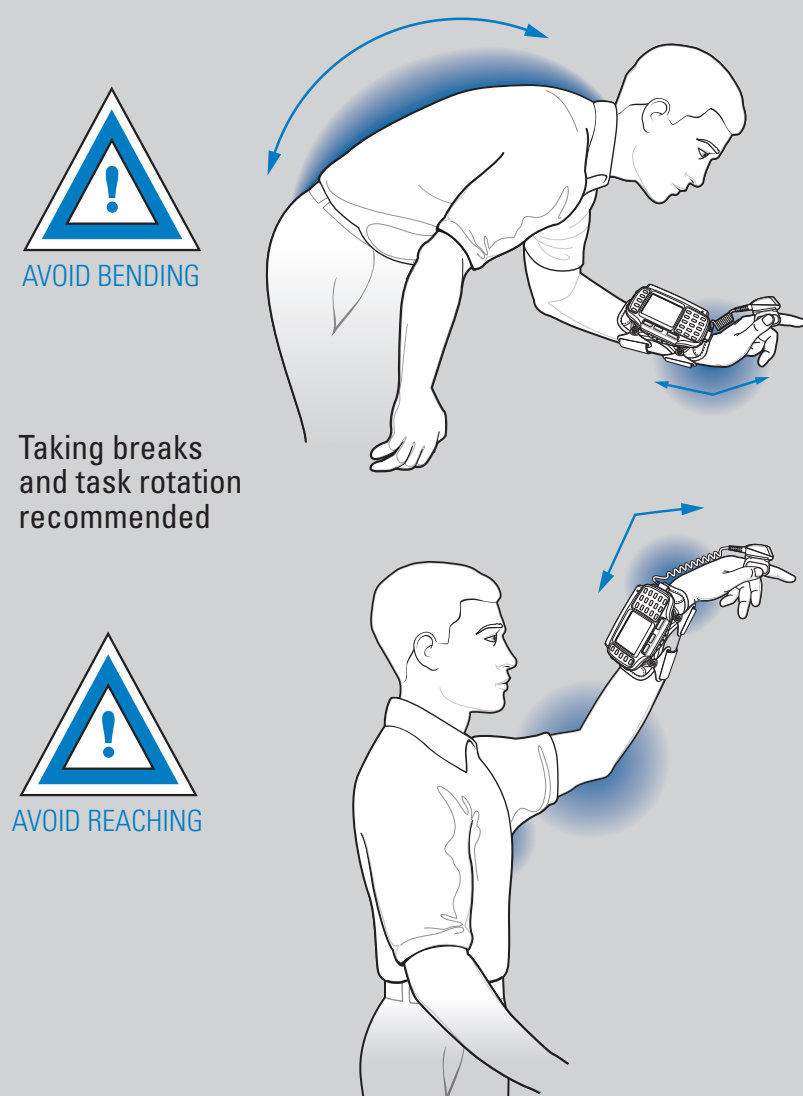
## SCANNER FINGER MOUNT



## AVOID EXTREME WRIST ANGLES



## AVOID BENDING AND REACHING

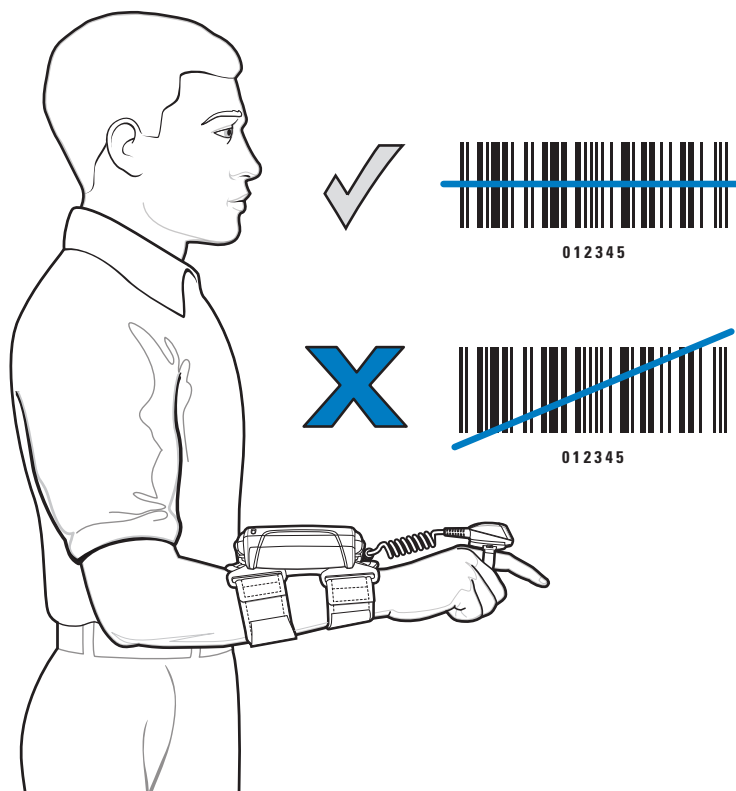


## OPTIMUM BODY POSTURE

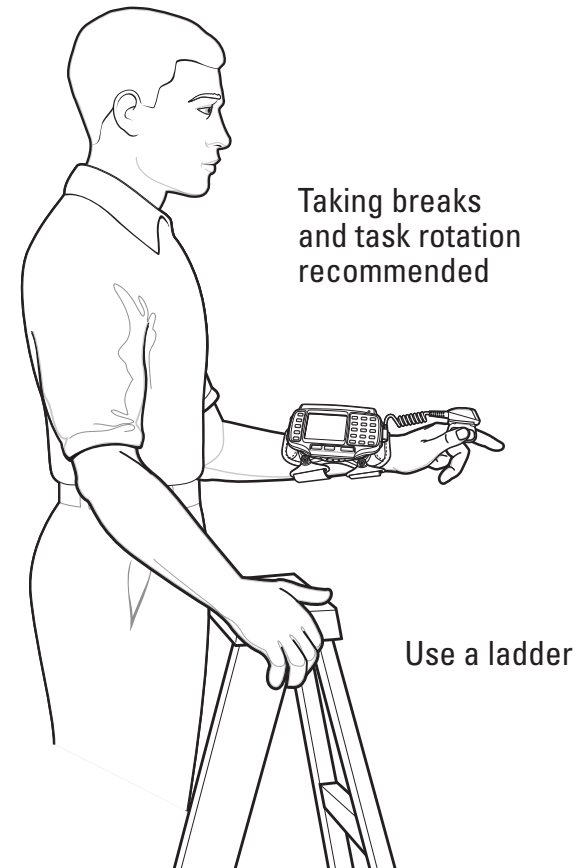
### Low Scanning



### Upright Scanning



### High Scanning



POST IN WORK AREA



One Motorola Plaza Holtsville, New York 11742-1300, USA  
MOTOROLA and the Stylized M Logo and Symbol and the Symbol logo are registered in the U.S. Patent and Trademark Office. All other product or service names are the property of their respective owners.  
© Motorola, Inc. 2007



72-86717-02 Rev A — October 2007

<http://www.symbol.com/wt4090>

WT4090

Recommended Usage Guide