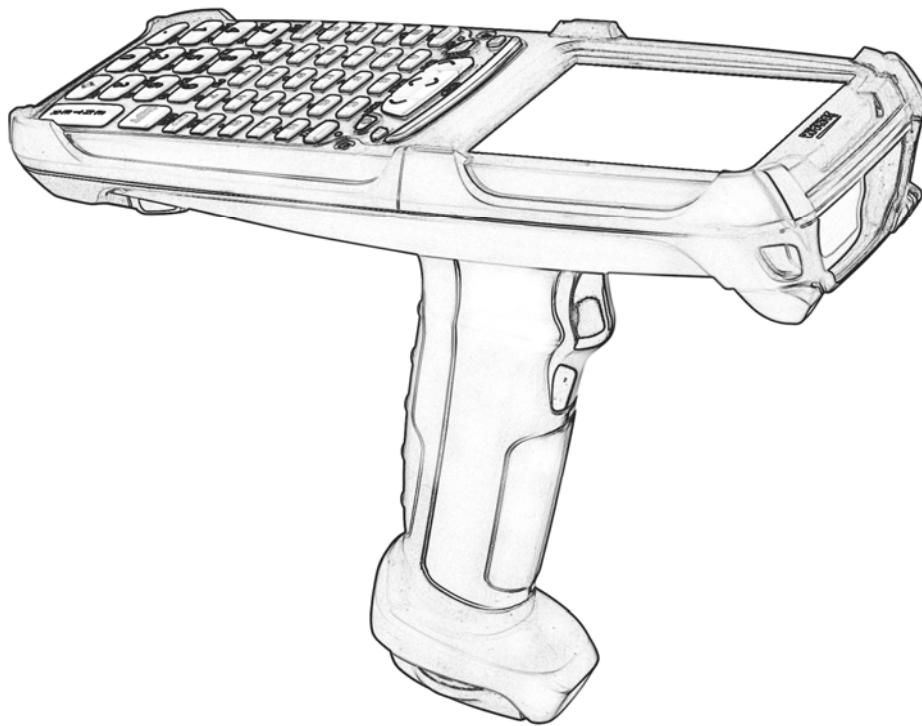

JANAM

XG100WM User Guide



Introduction

Janam's XG100WM Series has been optimized to meet the unique requirements of mobile workers in warehouses, distribution centers, loading docks and other operating venues where rugged gun-shaped mobile computers are deployed. While its center-weighted ergonomic design makes it uniquely balanced and light, the Microsoft Windows-based XG100WM is a powerful workhorse that delivers state-of-the-art computing performance in an exceptionally rugged package. Designed for the work at hand, the XG100WM delivers superior performance and flexibility at a great price.

About the Janam XG100WM

The XG100WM has a light, sleek, highly-functional form factor for intensive barcode scanning. Its unique center-weighted ergonomics, with battery located in the handle make it light and balanced in the hand. It features a color, quarter-VGA display, Marvell XScale PXA320 624MHz processor, robust 802.11 b/g Summit WLAN radio with Cisco's CCX v4 support. It has an extra-wide keypad area with large, easily-depressed buttons and superior backlighting. The XG100WM meets IP64 sealing requirements, withstands multiple 6' drops to concrete on all sides across a wide temperature range and 2,000 tumbles in a rotating test chamber.

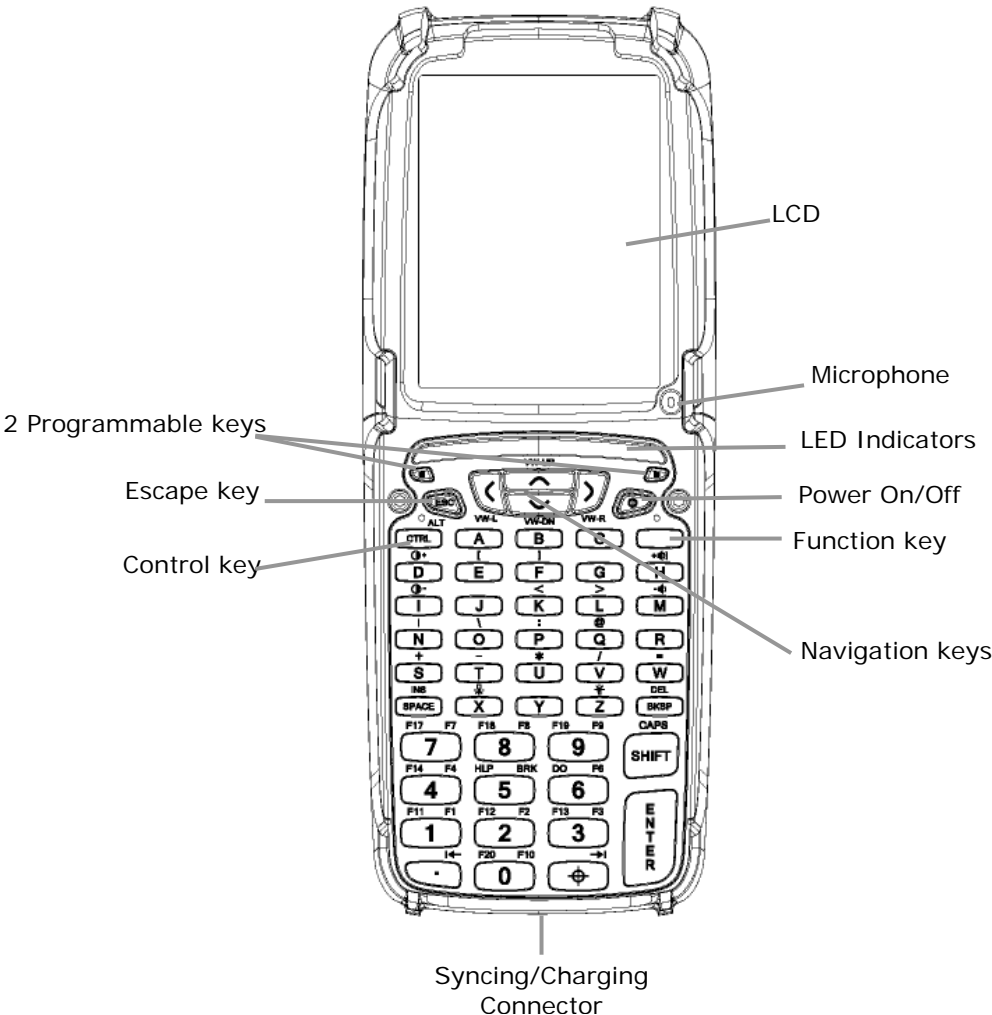
Further enhancing its value, the XG100WM features integrated 1D barcode scanning as well as built-in 2D barcode scanning capability. Janam's 2D scanning solution enables users to upgrade barcode scanning capability from 1D to 1D/2D on any device at any time with a simple firmware upgrade. With **Adaptus® Imaging Technology**, the XG100WM easily reads all types of barcode symbologies including linear, stacked and 2D. It offers the flexibility to adapt as business needs change, without the need to invest in new hardware.

Features

- Microsoft® Windows® Mobile 6.1.
- Full 3.7" color display
- High-performance 1D and 2D barcode scanning capability
- Extra-wide keypad area with large, easily-depressed buttons and superior backlighting
- Emulator keypads insuring compatibility with existing installations
- Vibrator alert for successful scan feedback
- Bright-LED tail lights for visual feedback during overhead scanning
- Superior audio performance and VOIP-ready
- Integrated Electronic Article Surveillance (EAS) tags for enhanced asset protection
- 256MB DDR SDRAM/ 256MB NAND Flash ROM
- NAND flash backup of OS, applications and user data
- User accessible microSD card slot
- Sealed to IP64 standards
- Rugged design: Withstands multiple 6' drops to concrete on all sides across wide temperature range and 2,000 tumbles in a rotating test chamber.
- Enterprise-class WLAN with WPA security protocols
- Bluetooth v2.0
- Full system of accessories

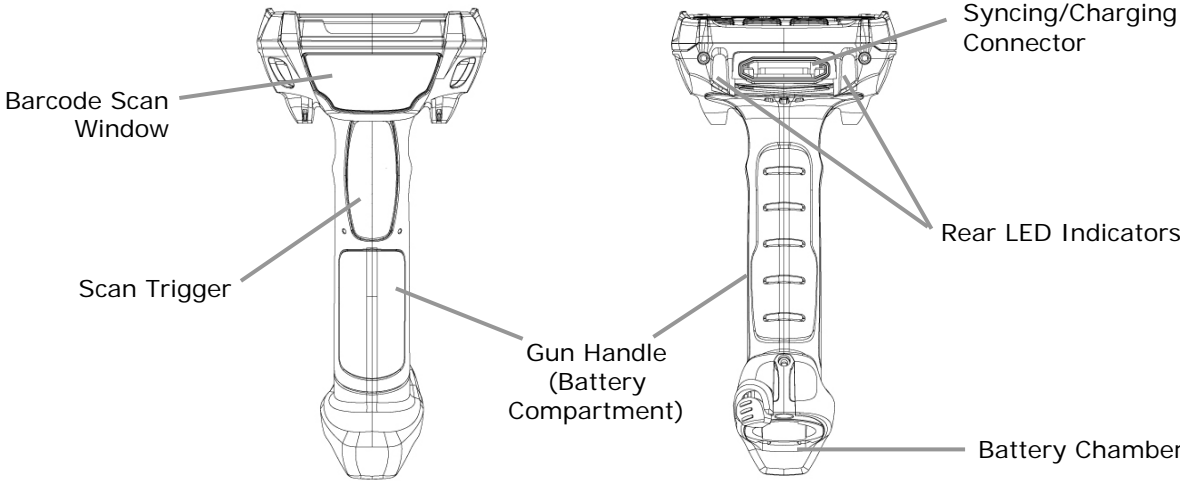
Hardware Overview

Top View

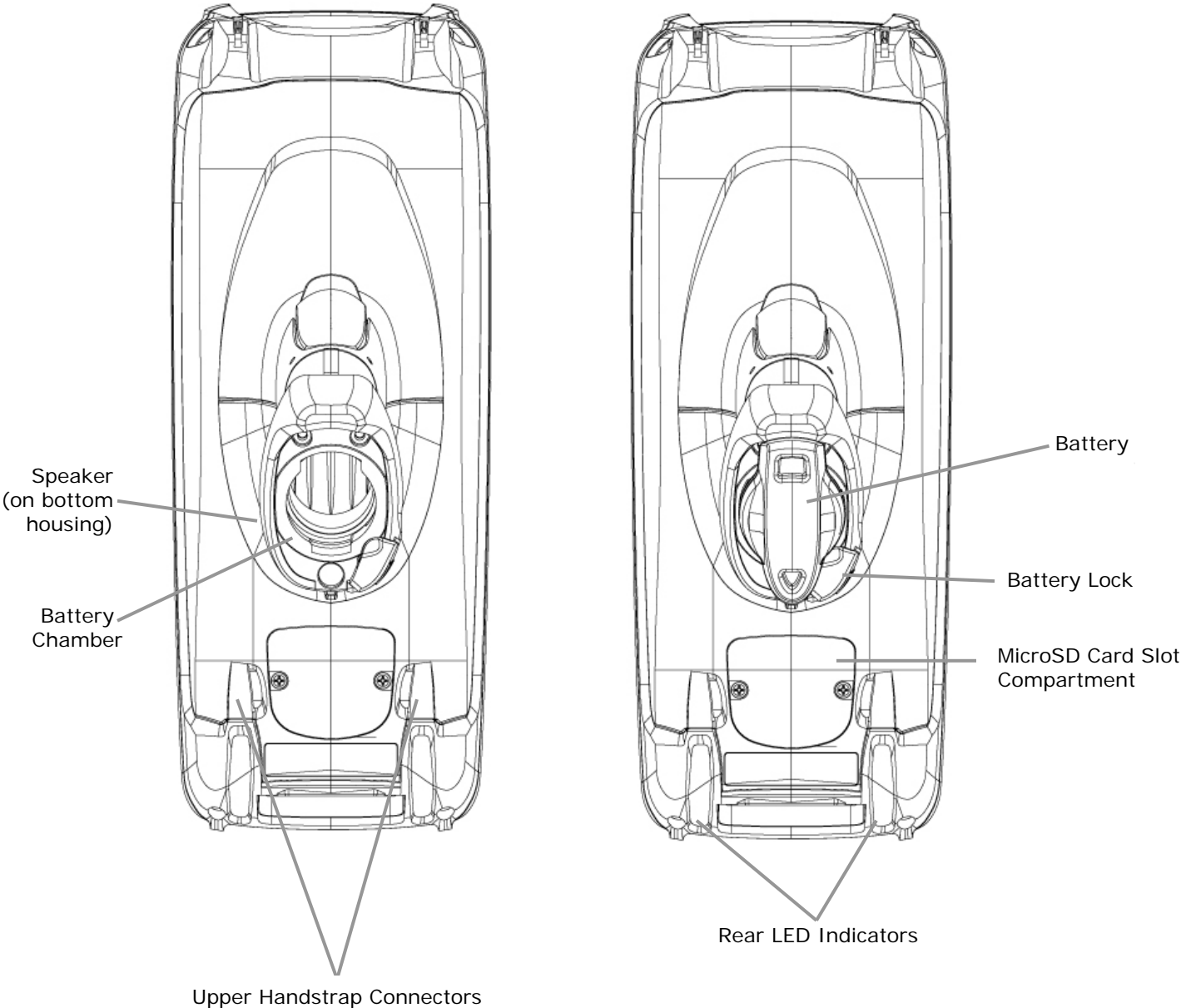


Front View

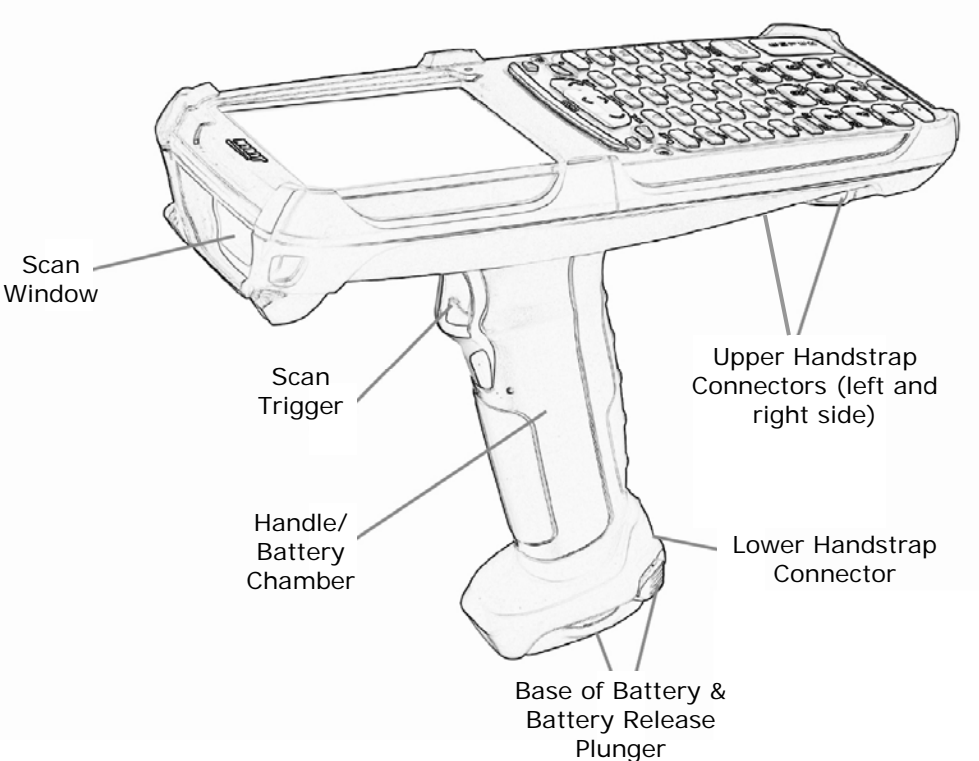
Rear View



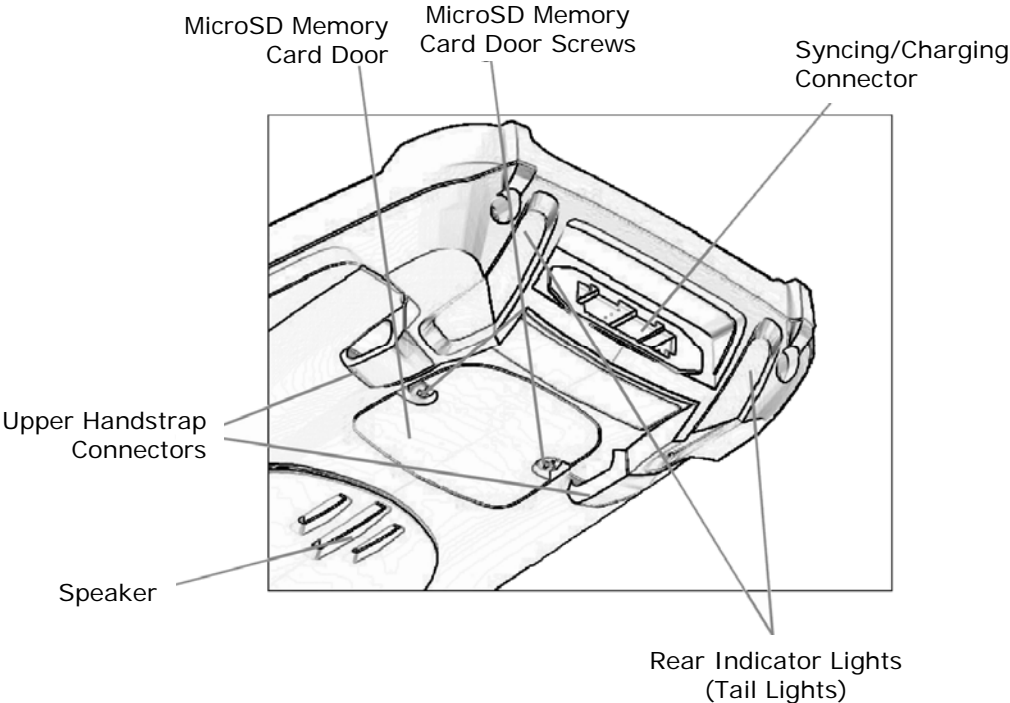
Bottom View



Side View



Rear-Bottom Sectional View



Get Started

Unpack your Janam XG100

Make sure you have the following:

- Janam XG100WM mobile computer
- Janam authorized battery
- Handstrap
- Stylus
- Stylus tether
- Charging accessory (one of the following kits ordered/packed separately):
 - Single-slot cradle kit
 - Four-slot cradle kit
 - USB cable with AC adapter
 - Serial cable with AC adapter

Recommended Host Computer Configuration/Requirements

- IBM-compatible host computer with Pentium 450 MHz processor or higher
- Microsoft Windows XP or Microsoft Windows 2000 operating system
- 128 MB RAM
- 100 MB available hard disk space
- CD-ROM drive
- One available serial or USB port
- Mouse

Janam XG100 SDK

The Janam XG Series Software Development Kit enables programmers to develop applications for Janam XG Series rugged mobile computers running the Microsoft® Windows Mobile 6.1 operating system. It contains all necessary details and instructions for developing applications that access Janam XG Series libraries, including scanning, imaging and hardware utilities.

The development kit, which can be downloaded from Janam's Partnerzone site (login required) is designed for use with Microsoft® Windows Mobile 6 SDK or Microsoft Visual Studio 2005.

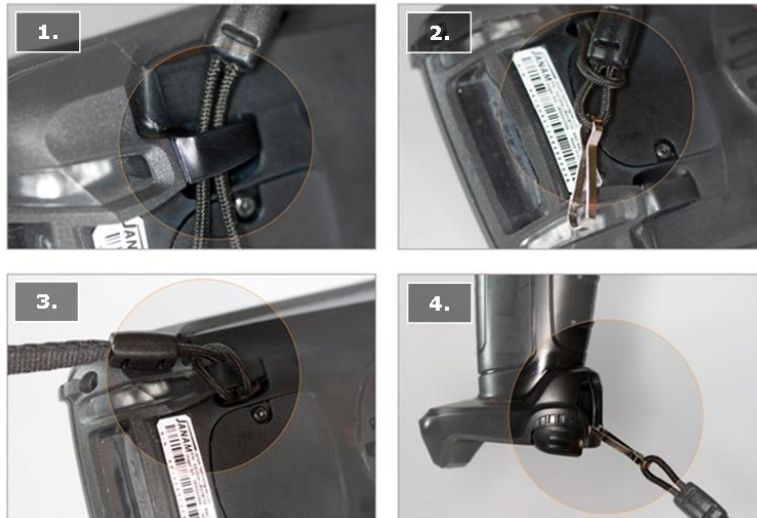
Update your Desktop Software

Microsoft ActiveSync 4.5 or later software is available at the Microsoft web site at

<http://www.microsoft.com>

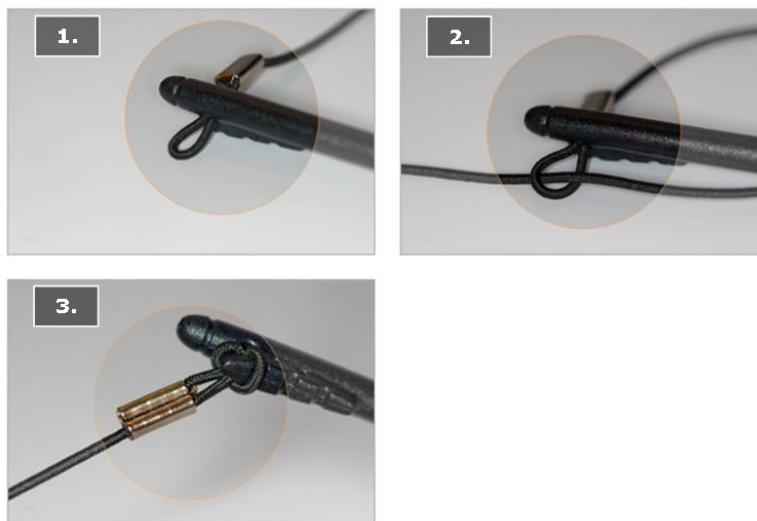
Attach the Handstrap to the XG100WM

1. Push the long-looped end of the handstrap through the left- or right-side upper handstrap connector (at the back of the handheld).
2. Push the metal hook (the other side of handstrap) through the loop that comes through the upper handstrap connector in step 1.
3. Pull the entire length of the handstrap through the loop to fasten one end of the handstrap to the device.
4. Clip the metal hook to the lower handstrap connector (near the base of the handle).



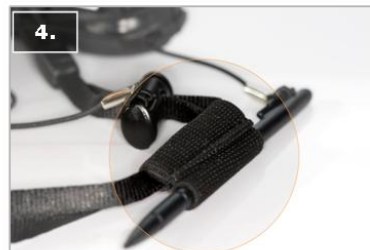
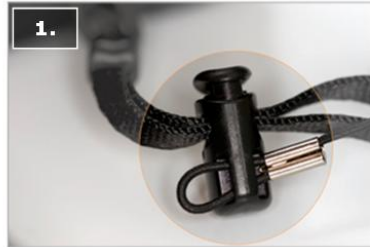
Attach the Stylus Tether to the Stylus

1. Push one looped end of stylus tether through the hole at the top of the stylus.
2. Pull the other end of the stylus tether through the first looped end.
3. Pull the entire length of the stylus tether including the silver grommet all the way through the loop to fasten and secure the tether to the stylus.



Attach the Stylus Tether to the Handstrap

1. Push the loop of the loose end of the stylus tether through one of the slits in the handstrap adjustment slider.
2. Push the stylus (now attached to the stylus tether) through the stylus tether's loop that comes through the slit on the adjustment slider.
3. Pull the entire length of the stylus tether and the stylus tether's silver grommet all the way through the loop to secure the stylus tether to the handstrap's adjustment slider.
4. When not in use, the stylus can be inserted in the stylus pouch on the handstrap.



Install the Battery

IMPORTANT Battery Warning!

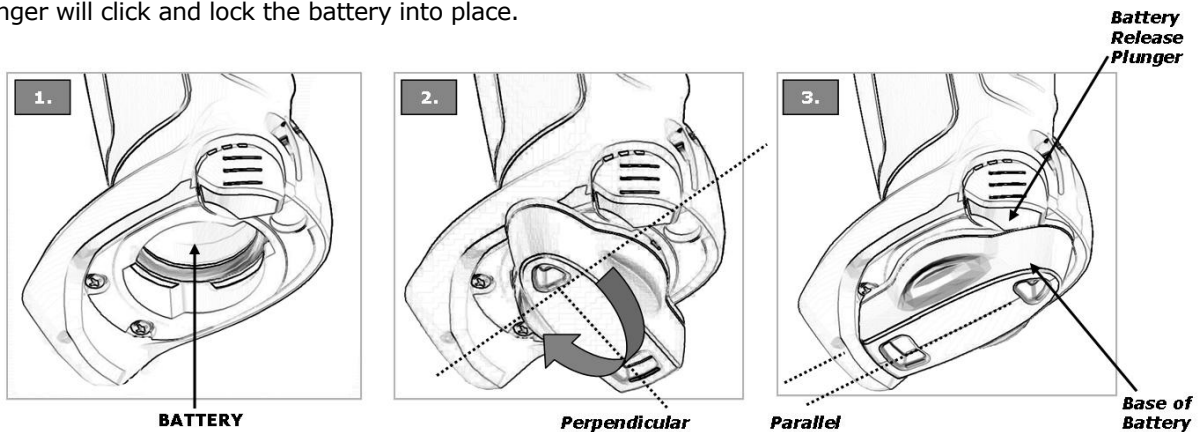
CAUTION: Use only Janam-approved batteries.

There is the risk of explosion if battery is replaced by an incorrect type.

Always dispose of used batteries according to the instructions.

INSTALLING THE BATTERY:

1. Insert the top of battery into chamber opening and gently slide battery into battery chamber. Do not force past point of resistance.
2. Turn the battery so that the base of the battery is perpendicular to the device handle. This aligns the battery notches with the battery chamber which is required to insert the battery. Once the battery is properly aligned with the handle, press the battery into the battery chamber.
3. Turn the battery base clockwise until the base of the battery is parallel with the device. The battery release plunger will click and lock the battery into place.



REMOVING THE BATTERY:

1. To remove the battery, fully press the battery release plunger and hold while rotating the battery counter-clockwise until it stops (battery base will be perpendicular to device handle).
2. Grip the battery base and pull battery from battery chamber.

CHARGING THE BATTERY:

Important Note: The backup battery must charge at a low current. Initial charge-time for the backup battery, therefore, is 72-hours. During this period, even though the main battery may indicate full charge, the device cannot maintain any user data if the main battery is removed. The initial 72-hour charge-time for the backup battery is required prior to first use or after a full drain of the backup battery.

Full drain of the backup battery will occur when:

- The main battery is removed and the device uses the backup battery to sustain its last state of operation for 15 minutes or more.
- The main battery's charge drops below 7% (the backup battery will support continued function for up to 15 minutes).

To charge the battery using the **USB or Serial Cable**:

1. Connect the power supply to the USB or serial cable.
2. Connect snap-on end of USB or serial cable to syncing/charging connector at the bottom of device, making sure the JANAM logo on the connector faces up.
3. Insert appropriate AC adapter and plug in the power supply. Use only easily accessible wall outlets that are easily reached with the length of supplied power cable.

To charge the battery using the **Single-Slot or Four-Slot Cradle**:

1. Connect the power supply to the cradle.
2. Connect the line cord to the power supply.
3. Insert appropriate AC adapter and plug in the power supply. Use only easily accessible wall outlets that are easily reached with the length of supplied power cable.
4. Place the device in cradle. The LED will illuminate to confirm connection (orange indicates charging, green indicates fully charged and red indicates fault).
5. The battery is fully charged in approximately 5 hours.
6. For **Single-Slot cradle only**: Charge a spare battery by placing the battery in the spare battery well with connectors lined up. An LED will illuminate to confirm connection.

Charging a Spare Battery in Single-Slot Cradle Spare Battery Well or Four-Slot Battery Charger

1. Insert and slide the battery into the charging slot as shown.
2. Press down and forward with index finger to fully seat the battery.
3. The LED will illuminate to confirm connection (orange indicates charging, green indicates fully charged and red indicates fault).
4. The battery is fully charged in approximately 5 hours.



Turn the XG100WM on

After batteries have been charged for required length of time, press the red power button located on the keypad to the right of the up/down/left/right arrow keys.

The first time the device is turned on, calibrate the screen using the stylus. To calibrate, simply follow the on-screen instructions and remember to save your settings.

Note:

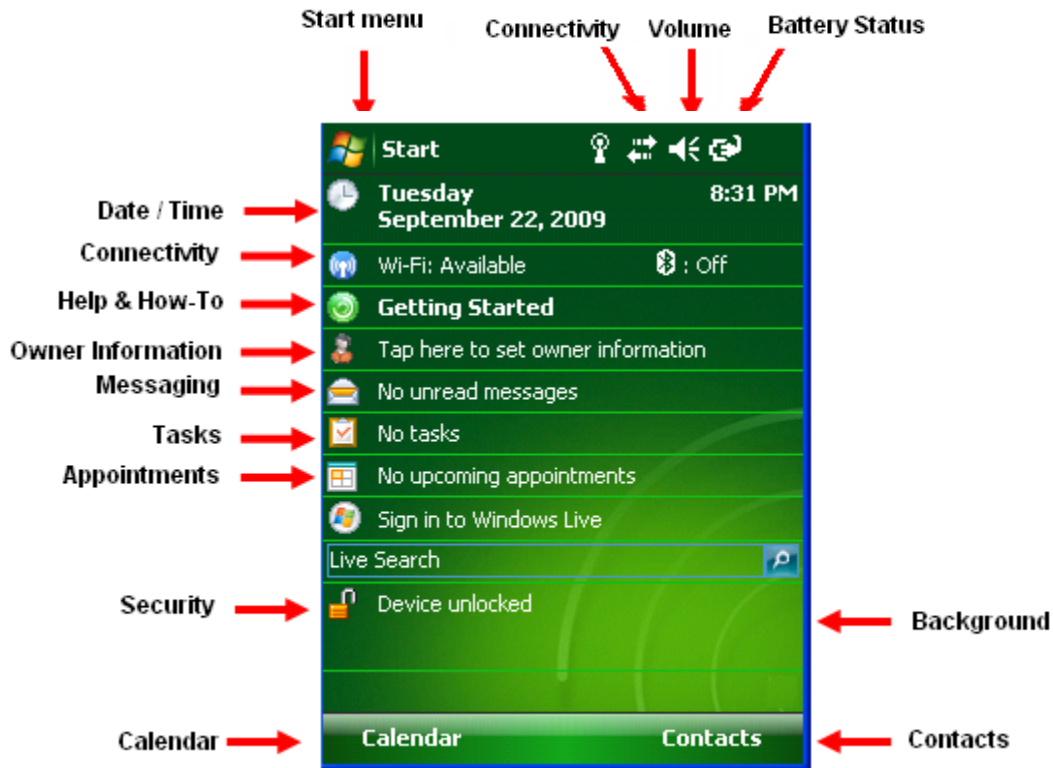
If your XG100WM came pre-loaded with a custom software application, a welcome utility may not appear. If this happens, follow the on-screen instructions.



Understanding the Desktop

Command bar

Your XG100WM mobile computer desktop has following features.



What do the Status Icons Mean?

Indicator	Meaning	Indicator	Meaning
	New email or text message (SMS)		Pending alarm
	Battery level		Sync error
	Low battery		Bluetooth
	Battery charging		Wi-Fi ON
	No battery		Wi-Fi signal strength

Set up your Janam XG100WM

Locate Front Panel Controls

1. **Power button** - Pressing the power button turns the handheld computer on (if it is off) and returns to the last screen that was displayed. Press the power button to turn the handheld computer off.
2. Use the **backlight** to illuminate the screen in low-light conditions.
 For 52-Keypad: Press Orange (Function) key and then press "Z" key to turn display backlight on/off.
 For 42-Keypad: Press Orange (Function) key and then press "N" key to turn display backlight on/off.
3. Use the **keylight** to illuminate the keypad.
 For 52-Keypad: Press Orange (Function) key and then press "X" key to turn keylight on/off.
 For 42-Keypad: Press Orange (Function) key and then press "M" key to turn keylight on/off.
4. Janam XG100WM LCD displays the applications and data stored in your handheld computer. It is touch-sensitive.

Locate Back Panel Components

1. **microSD Card Slot (located under microSD card cover)** - Remove 2 screws using cross head screwdriver. Remove the cover and insert a microSD card into the slot. Replace card slot cover.
2. **USB/serial connector** - Connects your handheld computer to a PC via a sync/charging USB cable or by inserting XG100WM into a Janam cradle.

ⓘ IMPORTANT NOTE!

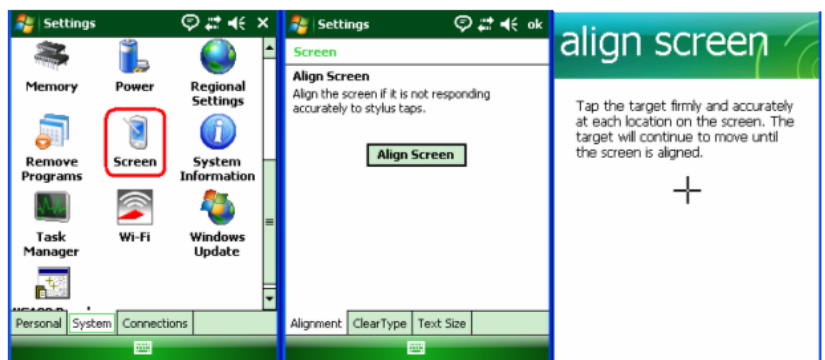
Always use the stylus for tapping or making strokes on the handheld computer screen. DO NOT use a pen, pencil or any other object on the touch screen of the XG100WM.

Recalibrate the Screen

The first time you start the Janam XG100WM handheld computer, setup instructions will appear on screen. These instructions include a calibration screen, or digitizer. Calibration aligns the internal circuitry of the handheld computer with its touch-sensitive screen so the handheld can detect tapping selected elements on the screen. You can also recalibrate your screen at any time.

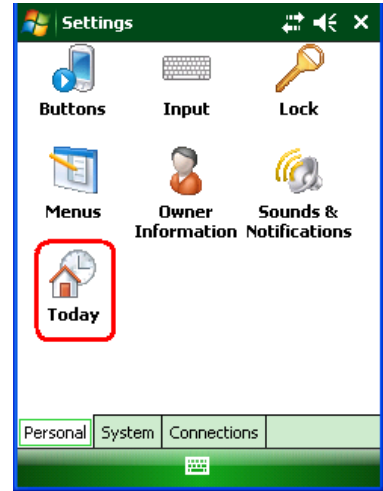
To recalibrate your screen:

1. Tap the **Start menu > Settings > System Tab > Screen**.
2. Select **Align Screen** button, and follow the **on-screen instructions**, tapping the screen where indicated.



Customize the Today Screen

The Today screen can be customized by tapping **Start menu > Settings > Today**.



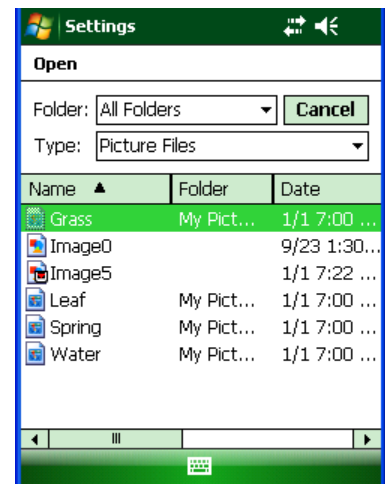
To choose a background/theme:

On the **Appearance** tab, select the desired theme for the background.



To choose add a custom background image:

1. Select the **use this picture as the background check box**, and **tap Browse** button to view a list of your picture files.
2. Select the folder that contains the picture you want to use.
3. Select the file type of the picture.
4. Tap the file name of the picture you want to use.
5. Tap **OK**.

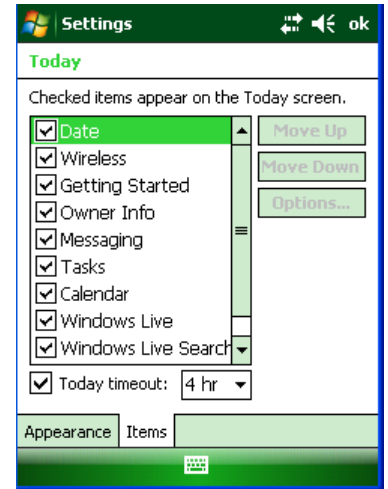


i IMPORTANT NOTE!

Pictures can affect the readability of text on the Today screen,

To select/change the order of appearance:

1. On the **items tab**, select the items you want to appear on the today screen.
2. Change the order by tapping the item and then tap move up or move down.

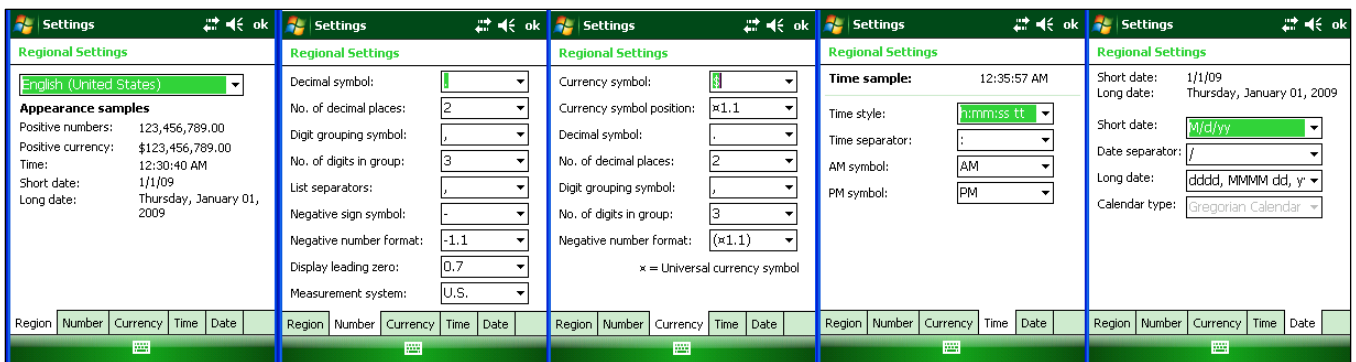
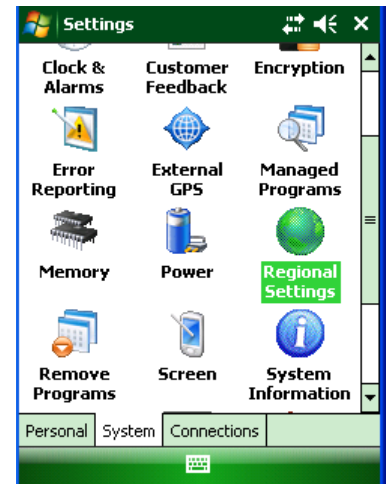


Change Language and Regional Settings

Your Janam YG100WM ships with pre-set regional, language and input settings. To change these settings, follow the directions below.

The style in which numbers, currency, dates and times are displayed is specified in regional settings. To change these:

1. Tap **Start menu > Settings > System tab > Regional Settings**.
2. On the **Region** tab, select your **Region and Language**.
3. Do one of the following:
 - On the **Time** tab, select the **time display options** you want.
 - On the **Date** tab, select the **date display options** your want.
4. To customize settings further, tap the **appropriate tabs** and select the **desired options**.

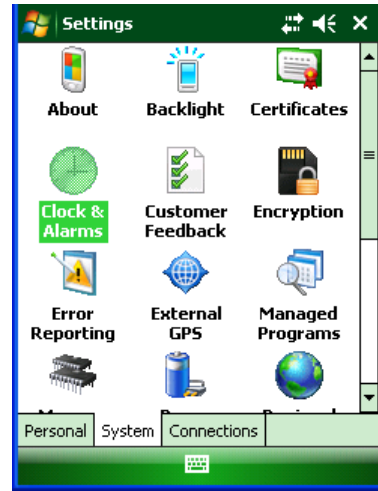


Change the Date and Time Display

To set the time and date:

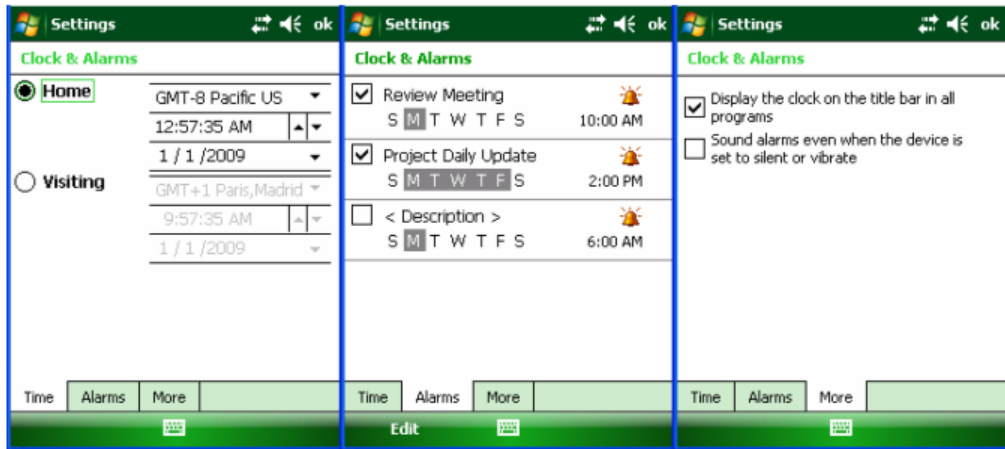
1. Tap **Start** menu > **Settings** > **System** tab > **Clock & Alarms**.
2. Select the correct **Time Zone**, and change the **Date or Time**.
3. Choose **Alarms** tab to set regular reminders.
4. Choose **More** tab to add/remove the clock on the title bar in all programs and the sound alarm even when the device is set to silent or vibrate.

Note: During synchronization, the time on your device is updated with the time on your PC.



To set the time and date for a different location:

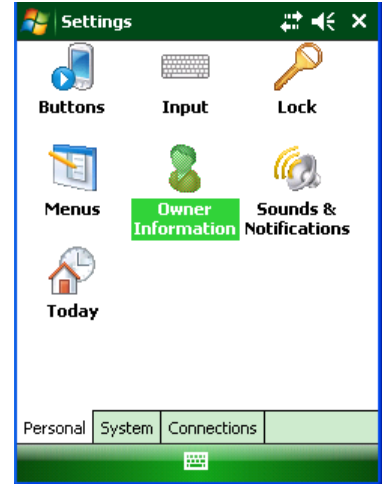
1. Tap **Start** menu > **Settings** > **System** tab > **Clock & Alarms**.
2. Tap **Visiting**.
3. Select the **correct time zone**, and change the **time or date**.



Tip: Select visiting to choose a different time zone if you are travelling to another location or frequently communicate with someone in another time zone.

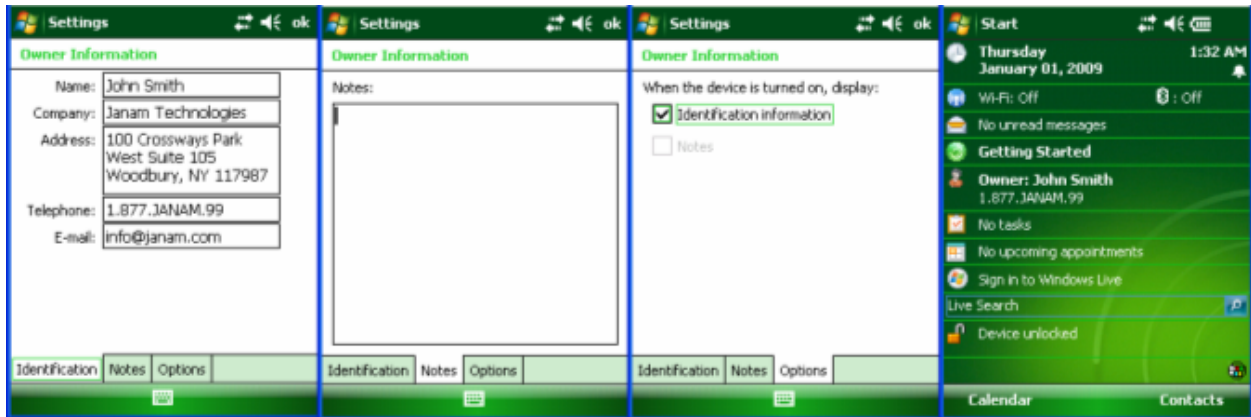
Owner Identification and Password Protection

1. Tap **Start** menu > **Settings** > **Personal** tab > **Owner Information**.
2. On the identification tab, enter your **personal information**.



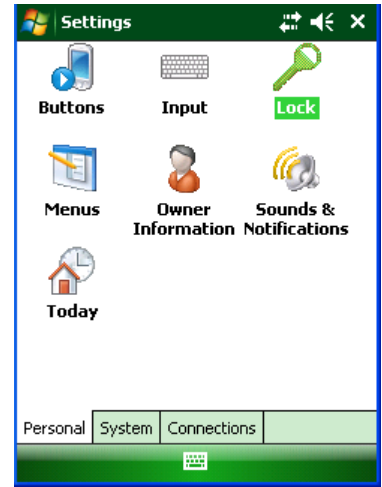
To display owner information on the today screen:

1. Tap **Start** menu > **Settings** > **Personal** tab > **Owner Information**.
2. On the **Options** tab, select the **identification information** check box.
3. On the **Options** options tab, select the **notes check box** if you want additional text displayed, such as: Reward if found.
4. On the **Notes** tab, enter the **additional text**.



To protect your device with a password:

1. Tap **Start** menu > **Settings** > **Personal** tab > **Lock**.
2. Select the **Prompt if device unused for** check box, and select the option from the dropdown menu.
3. In the password type box, select the **type of password** you would like to use – **Simple PIN** or **Strong alphanumeric**. Enter the **password** and key in the same password to **confirm** the password.
4. On the **Hint** tab, enter a phrase to help you remember your password. The hint displays after the wrong password is entered four times.
5. Tap **OK**. You will be prompted to enter your password the next time you turn on your Janam XG100WM.

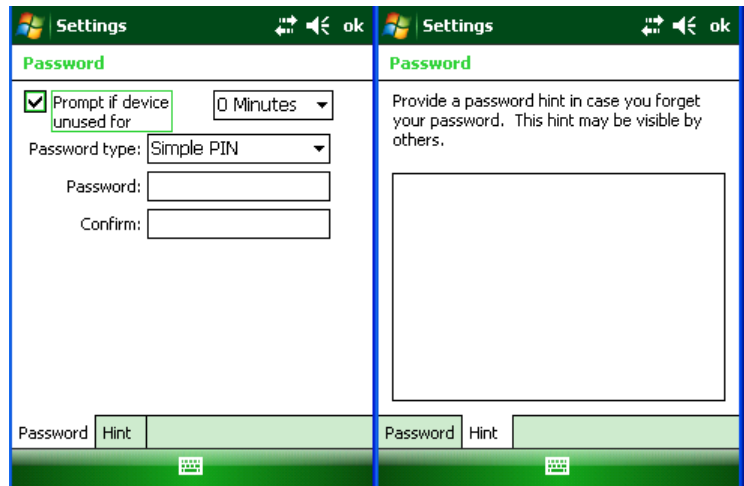


❗ IMPORTANT NOTE!

Each time a wrong password is entered, the time the device takes to respond will get longer and longer until the device appears to be not responding. If you forget your password, you must reset your device.

To change your password:

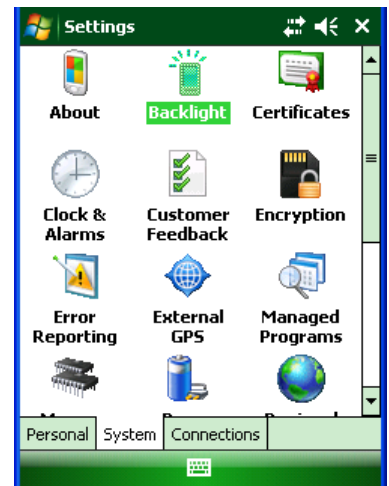
1. Tap **Start** menu > **Settings** > **Personal** tab > **Lock**. Enter your current password.
2. In the password box, enter your **new password**.
3. On the **Hint** tab, enter a **phrase** to help you remember your new password. The hint displays after the wrong password is entered four times.
4. Tap **OK**.



Backlight and Brightness Preferences

To change backlight preferences:

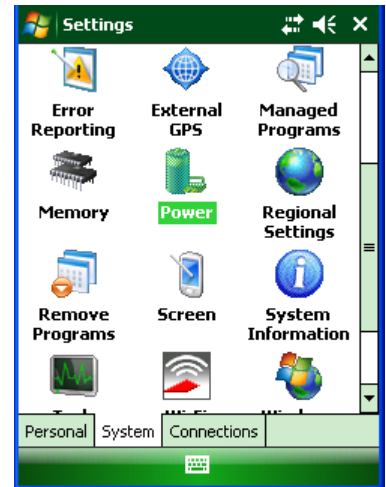
1. Tap **Start** menu > **Settings** > **System** tab > **Backlight**.
2. Select **Battery Power** tab and make your **changes** in:
 - Turn off backlight if device not used for
 - Turn on backlight when a button is pressed or the screen is tapped.
3. Select **External Power**, and make your **changes** in:
 - Turn off backlight if device not used for
 - Turn on backlight when a button is pressed or the screen is tapped.
4. Click **OK**.



Battery Power

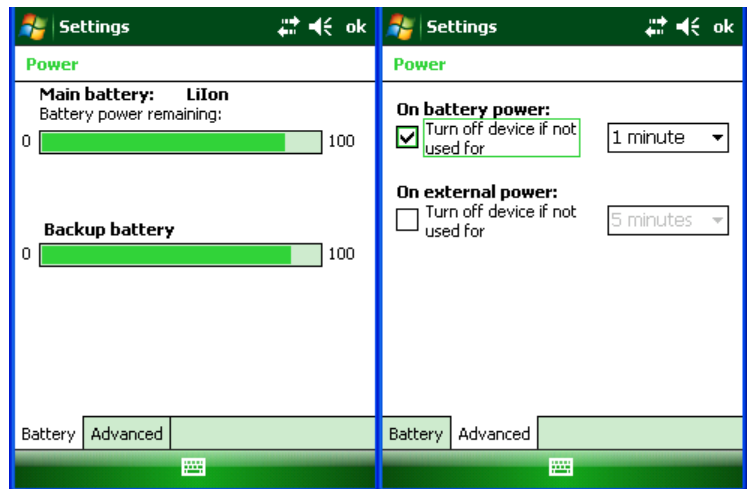
To make the battery last longer:

1. Tap **Start** menu > **Settings** > **System** tab > **Power**.
2. On the **Advanced** tab, **specify when your device turns off** to conserve battery power. For optimum conservation, specify 3 minutes or less. Default value is 1 minute.
3. Use the AC adapter to plug your device into external power whenever possible.
4. Adjust the **backlight settings** using keypad.



To check the main battery and backup battery status:

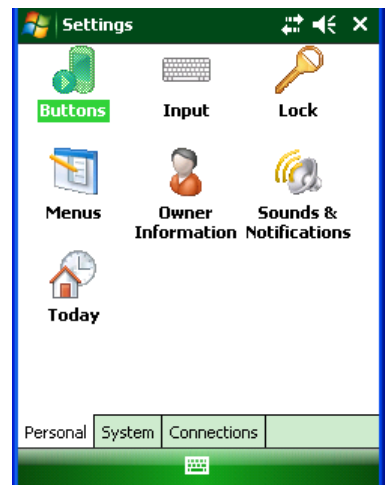
1. Tap **Start** menu > **Settings** > **System** tab > **Power**.
2. On the **Battery** tab, Main Battery status and Backup Battery status are shown in bar chart from 0% to 100%.
3. Battery status can also be found in **Start** menu > **Settings** > **System** tab > **XG100 Panel** > **Battery** tab.



Button Assignment and Scrolling Speed

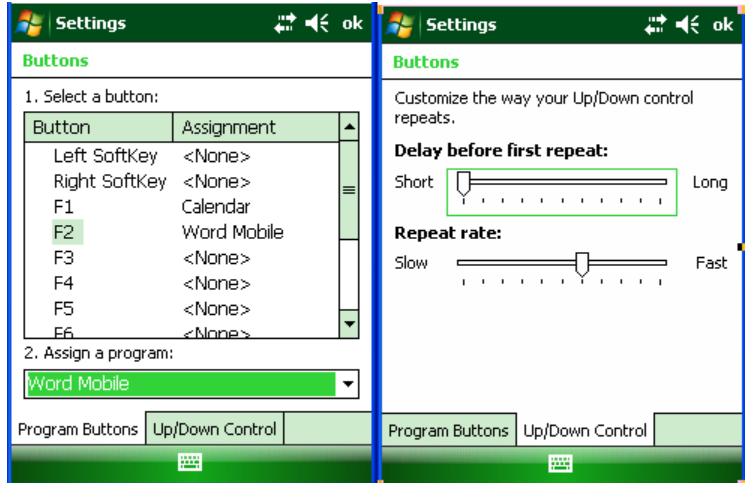
To program buttons:

1. Tap **Start** menu > **Settings** > **Personal** tab > **Buttons** > **Program Buttons** tab.
2. First, select a button from the list, then assign a program from the dropdown menu to that button.



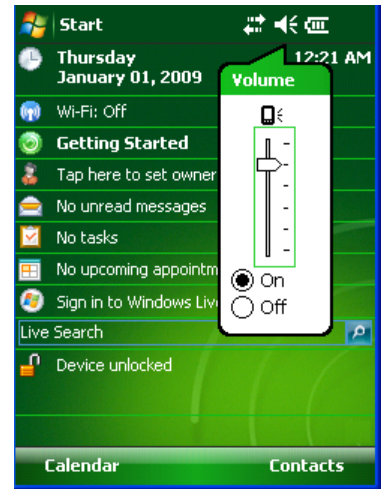
To adjust the speed for scrolling:

1. Tap **Start** menu > **Settings** > **Personal** tab > **Buttons** > **Up/Down Control** tab.
2. Do one of the following:
 - Under delay before first repeat, move the **slider** to shorten or lengthen the time that elapses before scrolling begins.
 - To change the time it takes to scroll from one item to the next, under repeat rate, move the **slider** to adjust the speed.



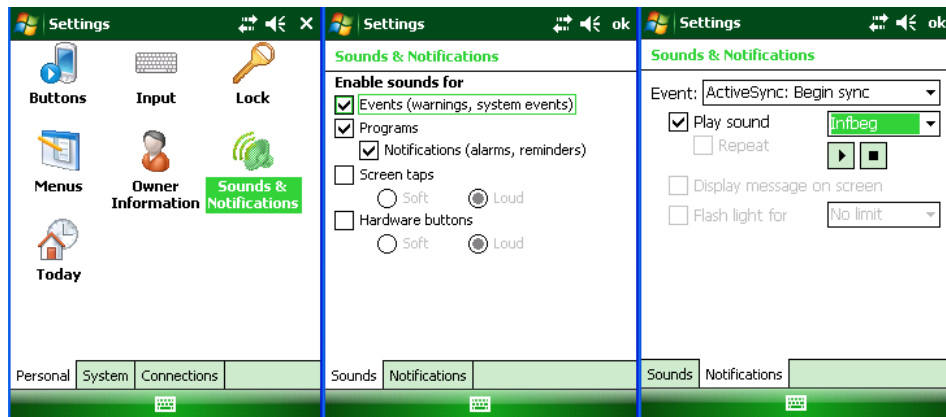
Volume Control

1. Tap the on the top command bar.
2. Move the indicator **up or down** to adjust volume.
3. Click **off** to turn volume off completely.
4. Click on the **handheld's background** to close the popup.
5. Alternatively, user can use keypad to adjust the volume. On 52-key keypad, <Func + H> keys for volume up and <Func + M> keys for volume down.



Enable Sounds and Notifications

1. Tap **Start** menu > **Settings** > **Personal** tab > **Sounds & Notifications** > **Sounds** tab.
2. Tap or select the **events and programs** to enable sounds.
3. Select the **Notifications** tab to assign notifications to specific events.
4. Select the **Event** in the dropdown menu, tap **Play sound** checkbox and choose **sound**.
5. Click **ok**.



Device Name

Your XG100WM may already be named, which is used to identify the device in the following situations:

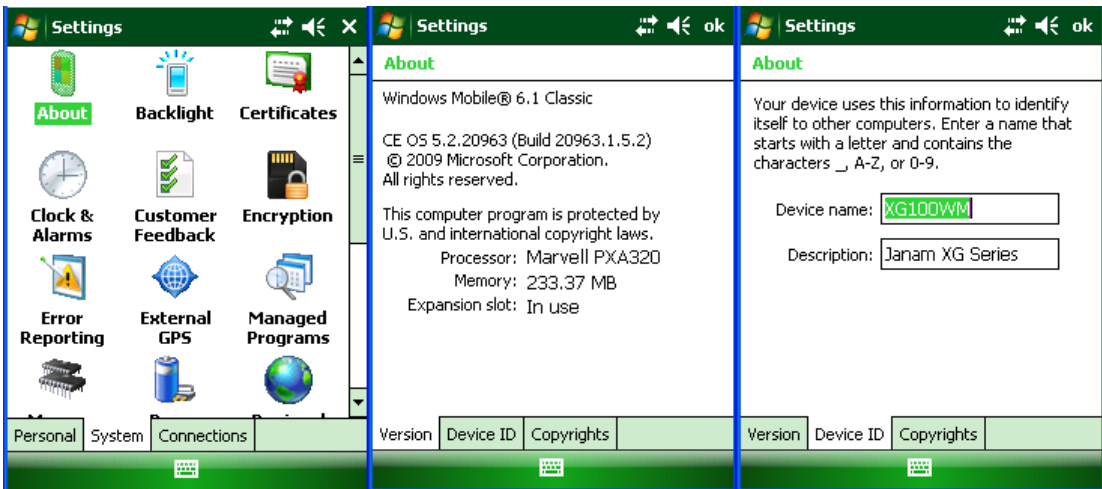
- Synchronizing with a PC
- Connecting to a network
- Restoring information from a backup

IMPORTANT NOTE!

If you synchronize multiple devices with the same PC, each device must have a unique name.

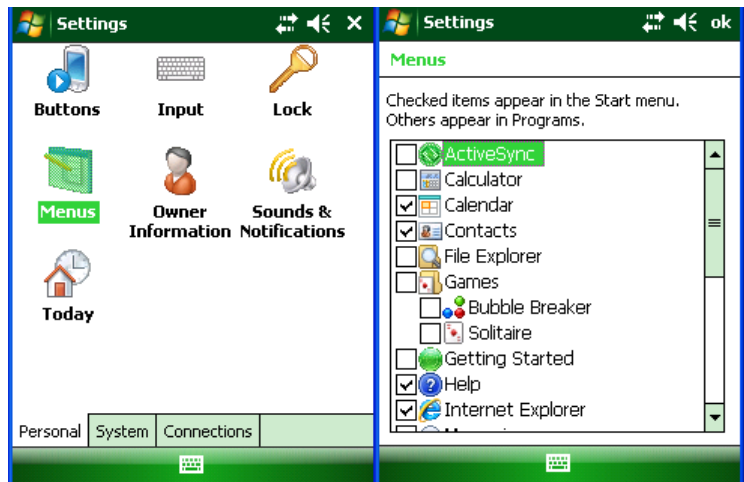
To change the device name:

1. Tap **Start** menu > **Settings** > **System** tab > **About**.
2. Tap the **Device ID** tab.
3. Enter a **name**. The device name must begin with a letter, consist of letters from A to Z, numbers from 0 to 9, and cannot contain spaces. Use the underscore character to separate words.



Customize the Start Menu

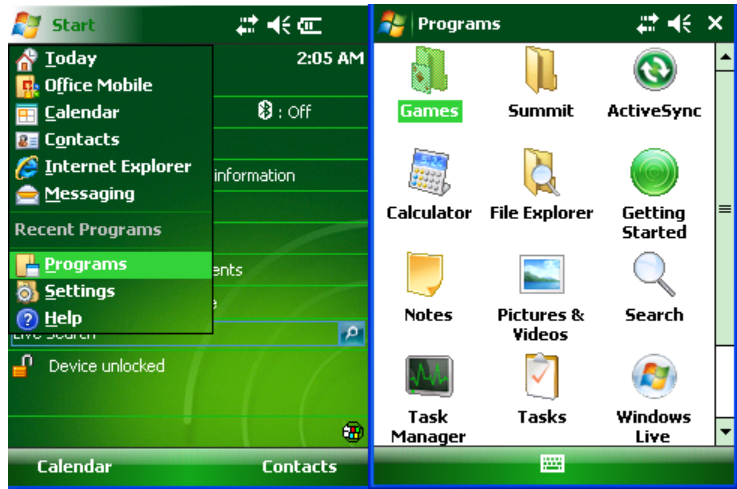
1. Tap **Start** menu > **Settings** > **Personal** tab > **Menus**.
2. Select the **check boxes** of the items you want to appear in the **Start** menu (up to seven items).



Open Applications

To open an application:

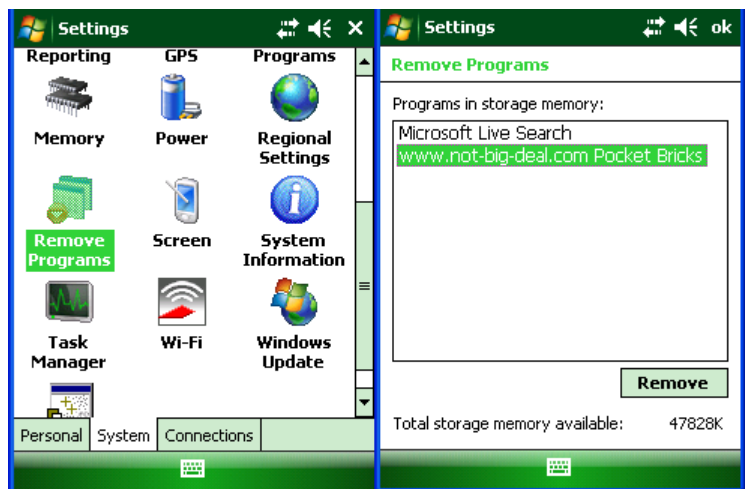
1. Tap **Start** menu > **Programs**.
2. Select the **application** you want to open.



Remove Applications

To remove a program:

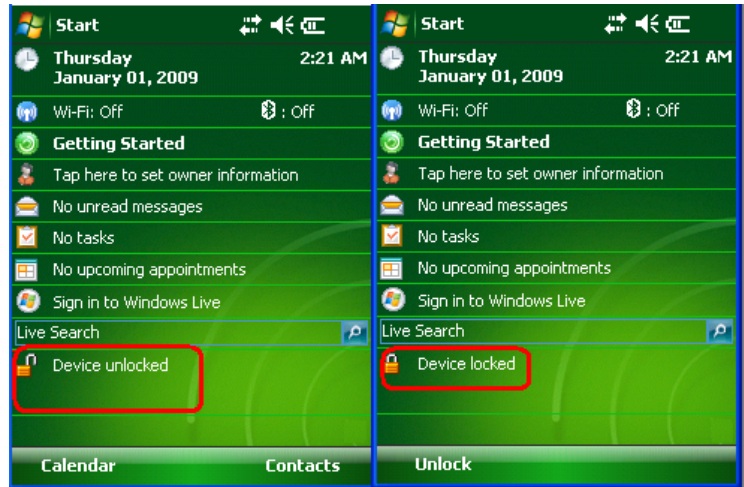
1. Go to **Start** menu > **Settings** > **Remove Program**.
3. Select the **program** you want to delete, and click **Remove**.
4. Click **OK**.



Device Locked/Unlocked

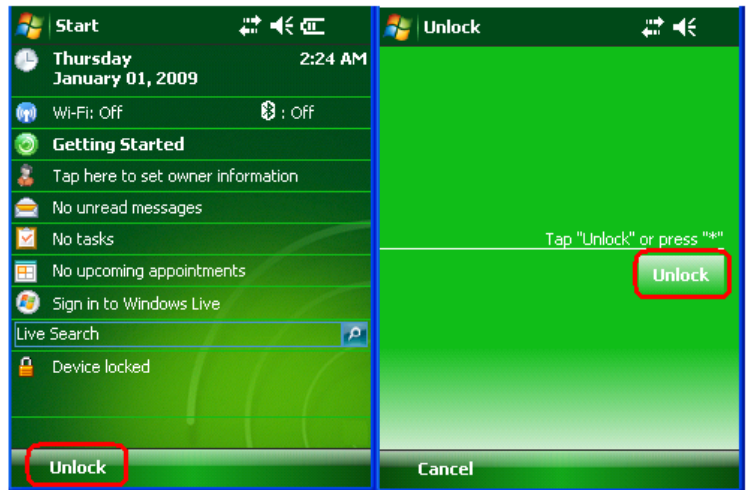
To lock the device:

1. Tap **Start** menu > **Today**.
2. Tap **Device unlocked**. The lock icon will change to a closed lock.
3. When the device is locked, keypad and touch screen will not receive user input.



To unlock the device:

1. At the bottom of the **Today** screen, tap **Unlock**.
2. Tap **Unlock** again.



How to Reset the XG100WM

Reset the XG100WM

To soft reset:

In most situations, a **soft reset** restarts the device and saves all stored records and entries. However, any data that has not been saved will be lost during a soft reset. To perform a soft reset, do the following:

1. Press **trigger** and **ESC** key at the same time and release.
2. The Janam logo will appear followed by Microsoft Windows screen.

To hard reset:

A **hard reset** restores the XG100, and removes ALL applications and data in volatile memory. Be sure that all data is backed up before performing a hard reset.

To perform a hard reset, do the following:

1. Press and release **CTRL** key, **BKSP** key and the **trigger**.
2. Wait for 5 seconds.
3. Press **Power** key.

To master reset (or clean boot):

A **master reset** or **clean boot** returns the XG100 to factory settings, removing ALL applications and data from the device. Be sure that all data is backed up before performing a clean boot.

To perform a master reset/clean boot, do the following:

1. Press and release **CTRL** key, **BKSP** key and the **trigger**.
2. Wait for 5 seconds.
3. **Press and hold CTRL** key and **FUNC (Orange)** key.
4. Press and release **Power** key.
5. Release **CTRL** key and **FUNC** key after 10 seconds.
6. Device reboots, Janam splash screen appears. After the reboot, the calibration screen appears.
7. Complete the calibration using a stylus and the Today screen appears.

IMPORTANT NOTE

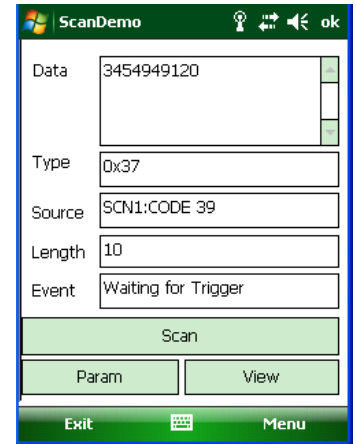
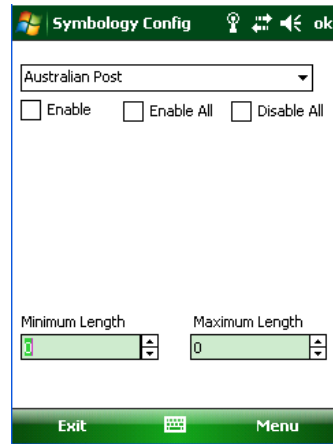
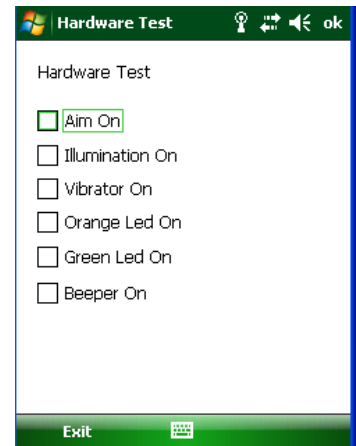
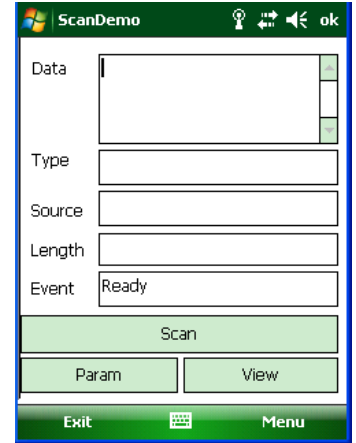
XG100WM mobile computers have a **battery removal detection feature** designed into the battery contacts. To protect against data loss if the battery is removed during data collection or processing, the system will not fully operate if the battery is not securely in place. As a result of this feature, XG100WM devices automatically create a safe state until the battery is secured, meaning a device will not power-up until the battery is completely in place.

Barcode Scanning

Barcode scanning demonstration and setup

To run the demo:

1. Tap the **Start** menu > **Programs** > **Scan** > **ScanDemo**.
Three menus will appear (setup, OCR, options) on the top of the screen.
2. Tap the **Menu** > **Setup** > **Hardware Test** to review all the functions of the scanner and determine if everything is working properly.
3. Select **each item individually** to verify that all hardware is working properly.
4. Tap **OK** to return to the main demo.
5. Select **Menu** > **Setup** > **Symbology Config**.
6. Tap **Enable All** to enable every type of barcode or manually select the type of barcode you need.
7. Tap **OK** to save.
8. Select **Scan**
9. Point the **scanner** at a barcode, and press any of the **barcode scan trigger buttons** on the XG100WM. The results will display after a successful scan.

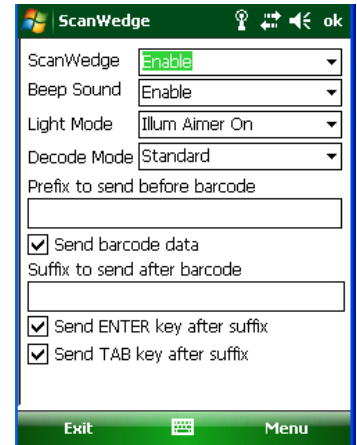


Enable the ScanWedge feature

When the ScanWedge feature is enabled, data can be entered into the specified application by opening the application on the handheld and scanning a barcode.

1. Go to **Start menu > Programs > Scan > ScanWedge**.
2. Select **Enable** from the *ScanWedge* menu.
3. Tap **Menu > Setup > Symbology Config**. You can then select **enable all** to enable every type of barcode or manually select the barcode symbologies you need.
4. Tap **OK**.

Note: The ScanWedge function will be disabled if manual scanning is initiated either by a command API or by using the Janam Barcode Test program.



Unlock 2D scanning

All of Janam’s mobile computers can be upgraded in the field to read both 1D and 2D barcodes with a simple firmware upgrade (Part Number 2D-XP-1). With each upgrade, a key code is provided that unlocks 2D scanning capability on the device. To purchase an upgrade for your XG100WM, contact your authorized Janam dealer.

You will need to provide the product imager ID number so the appropriate six-digit key code sequence can be assigned. To access the imager ID number, follow these steps:

To get your imager ID number:

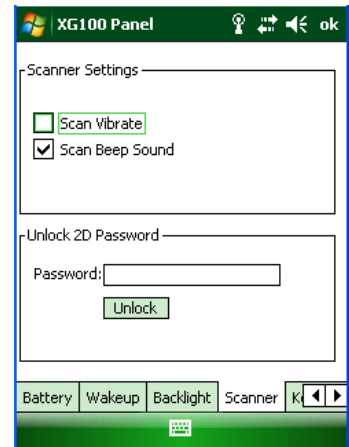
1. Tap the **Start menu**, go to **Settings** and select **System** tab.
2. Tap on the **System Information** icon.
3. Select **Device** tab.
The Imager ID info (Serial Number, S/N) is a unique number for each XG100WM device.
4. Record the S/N.



After receiving your six-digit key code, follow these steps to enable 2D scanning.

1. Go to the **Start menu > Settings > System tab > XG100 panel**.
2. Tap **XG100 Panel icon**.
3. Select **Scanner** tab.
4. Enter your **six-digit key code > Unlock**.
A *successful unlock* notification will appear.
5. Press **X to close the screen**.

Note: Remember to keep a record of your six-digit key code. The unlock code will be maintained in the unit's system after a soft reset or a hard reset, but it will need to be re-entered after a clean reset.



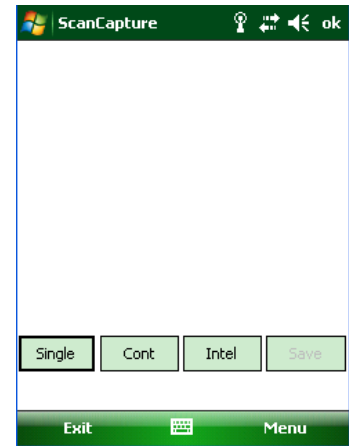
Enable ScanCapture feature

The ScanCapture demo enables you to capture images in three ways:

- a) Single – to capture a single image
- b) Cont. – to capture multiple images, video style
- c) Intel – for intelligent signature capture.

To take a single image:

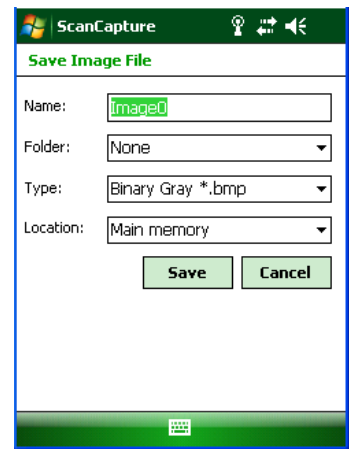
1. Click **Single button**.
2. Aim the XG100WM at the subject, hold the device steady and press the Single button. The unit will function as a digital camera and take a single picture.



3. A preview appears on the screen.
4. Click **Save**.

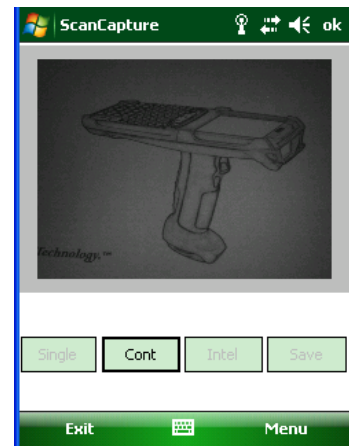


5. Enter a name for the image and select a memory storage location.
6. Click **OK**.
7. Below is the image that is captured.



To use continuous preview:

1. Select **Cont** or continue button.
2. Aim the XG100WM at the subject, hold the device steady and press the **Cont** button. This will start video record.
3. Press the **Cont** button again to stop video recording and display a single image.
4. Click **Save**.
5. Enter a name for the image and select a memory storage location.
6. Click **OK**.

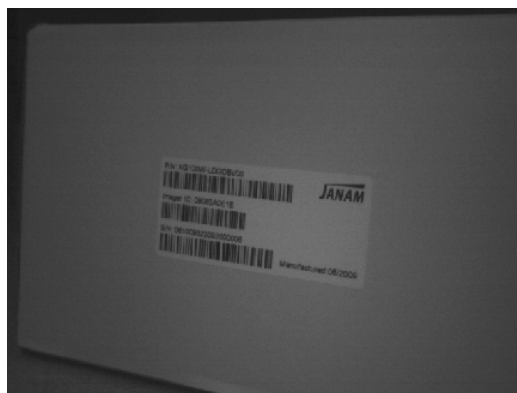
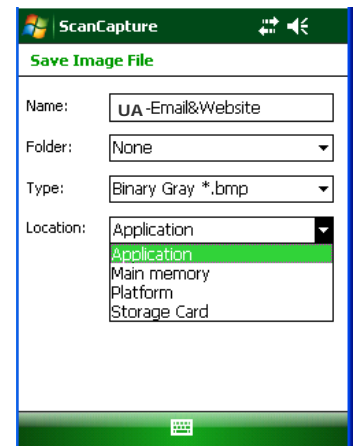


To use intelligent capture:

This function is designed to work with a custom barcode for Intelligent Signature Capture. A code 128 barcode is used to inform the device that a signature is to be captured. The Intelligent Signature feature will find the barcode in the image, scale it, remove the extra information, and display the signature on the screen.

When using the Intel Imaging function, there are a number of settings available. The main settings include the ROI Width and Height. ROI stands for Region Of Interest. This is the subset of the complete image that will be extracted. Another field is Image Bit Depth, which can be Gray or Binary. If Binary is selected, the returned image will be black and white. This results in the smallest image size, but the lowest image quality. If Gray is selected, the image will be in 256 levels of gray. This provides higher image quality and a larger image size.

1. Go to **Menu > Settings > Intel Img.**
2. Set up appropriate settings. Click **Address or Signature > OK.**
3. Select **Intel button** and **aim** at any support barcode. If you need to capture a 2D barcode, be sure to unlock your 2D feature.
4. Select **Save button.**
5. Enter **image name** and **save** to a memory storage location.
6. Click **OK.**
7. The below image is captured.



Enter Data

Entering information on the XG100WM

You can enter data into your Janam XG100WM handheld computer several ways:

Type	How
Barcode scanning	Use the barcode scanning to capture data and images.
Typing	Use input panel to enter typed text by tapping keys on the onscreen keyboard or by using handwriting recognition software.
Writing	Use the stylus like a pen to write directly on the screen.
Drawing	Use the stylus like a pen to draw a picture directly on the screen.
Synchronizing	Use ActiveSync to exchange information between your PC and device. For more information on ActiveSync, see chapter 11.

Using the Barcode Scanner

You can capture data and images by scanning barcodes into the handheld computer. See chapter 5 for details.

Using the Input Panel

The input panel provides access to the various input methods available on your device.



By default, input panel appears on the menu bar as shown to the bottom center. The icon indicates which input method is currently selected. The input selector arrow opens a list of available input methods.

To show or hide input panel, tap the input panel icon on the menu bar.

Icon	Indicates the selected input method is:
	The onscreen keyboard.
	Letter recognizer or block recognizer.
	Transcriber (if available).

Keyboard Shortcuts

When you use the onscreen keyboard, you can use shortcut keys as an alternative to menu commands when working in programs on your device.

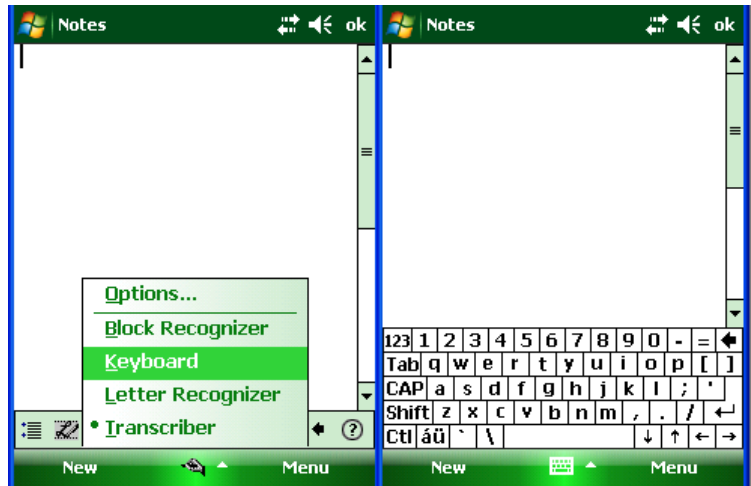
To	Tap	To	Tap
Copy the selected text	CTRL+C	Undo the last action	CTRL+Z
Cut the selected text	CTRL+X	Redo the last action	CTRL+Y
Paste the text	CTRL+V	Make the selected text bold	CTRL+B
Close a program	CTRL+Q	Make the selected text italic	CTRL+I
Open a new file	CTRL+N	Make the selected text underlined	CTRL+U

Using the Onscreen Keyboard

To enter text:

You can enter text by tapping keys on the keyboard that is displayed on the screen. The onscreen keyboard is available when text entry is possible.

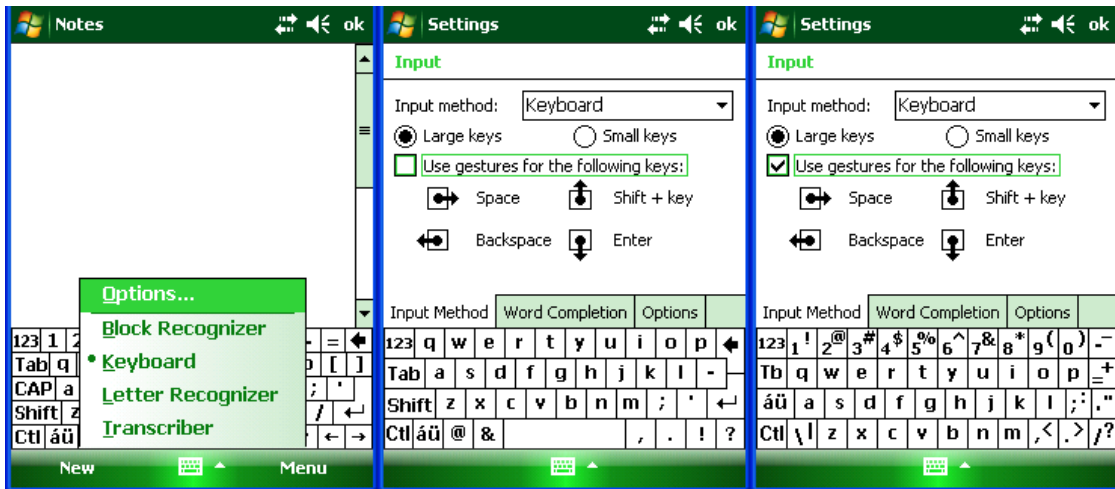
1. In a program, tap the **Input Selector** arrow, and then **Keyboard**.
2. Enter **text** by tapping keys on the onscreen keyboard.



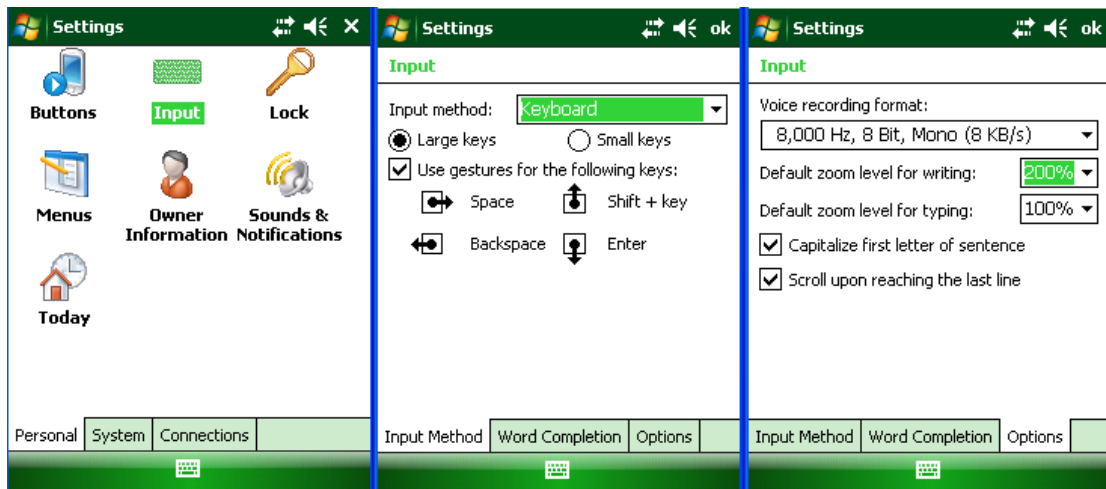
To increase the size of the keyboard keys:

1. Tap the **Input Selector** arrow > **Options** or tap **Start** menu > **Settings** > **Personal** tab > **Input**.
2. In the **Input Method** list, select **Keyboard** > **Large keys**.
3. Enlarge the keys even more by selecting the **use gestures for the following keys** check box. Fewer keys will appear on the keyboard, but you can do gestures for **Space**, **Backspace**, **Enter** and **Shift + Key**.
4. Tap the **Options** tab, and change the **zoom level** as desired.
5. Tap **OK**.

(a) Using Input Selector arrow

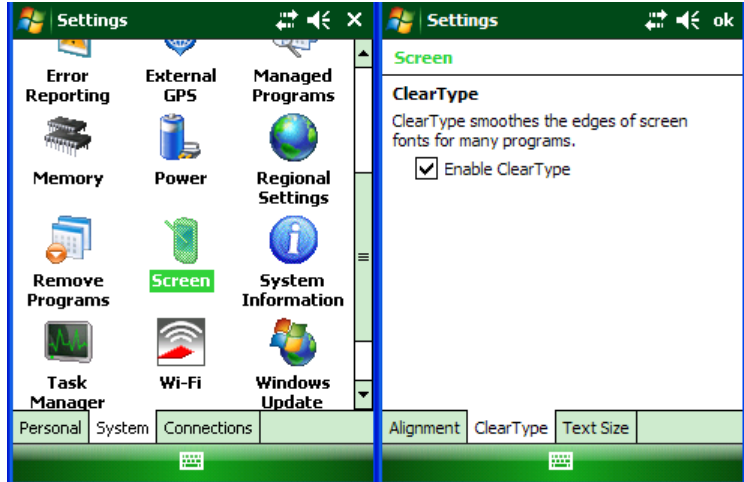


(b) Using Input on Settings screen



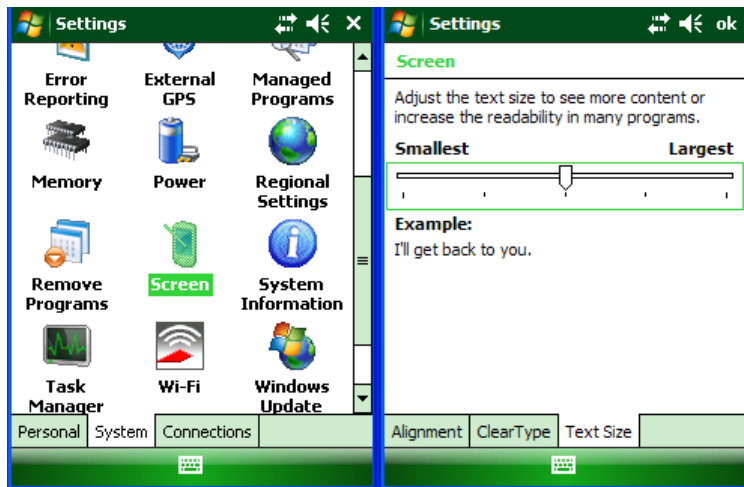
To use ClearType for screen text:

1. Tap **Start** menu > **Settings** > **System** tab > **Screen** > **ClearType** tab.
2. Select the **enable ClearType** check box.



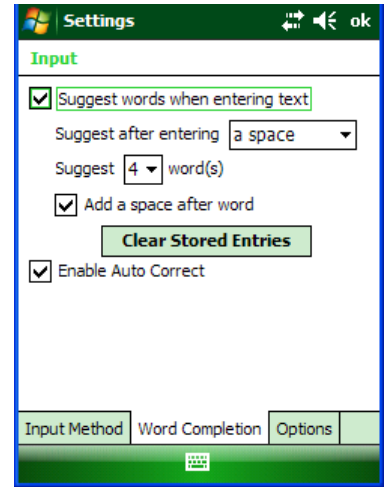
To increase or decrease the size of text on the screen:

1. Tap **Start** menu > **Settings** > **System** tab > **Screen** > **Text Size** tab.
2. Move the **slider** to increase or decrease the text size.



To change word completion options:

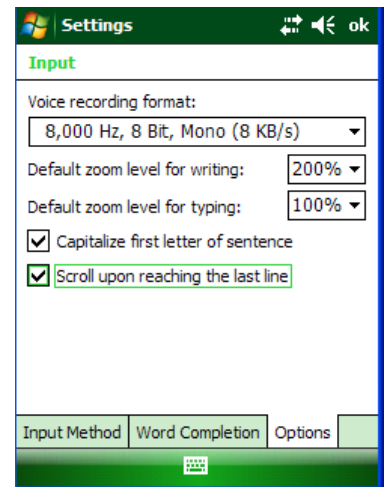
1. Tap **Start** menu > **Settings** > **Personal** tab > **Input**.
2. Tap the **Word Completion** tab, select the **Suggest words when entering text** check box, and **specify the settings**.
3. Tap **OK**.



To turn on automatic scrolling:

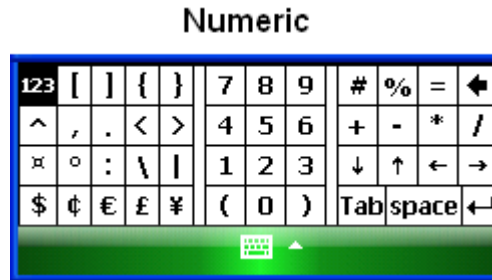
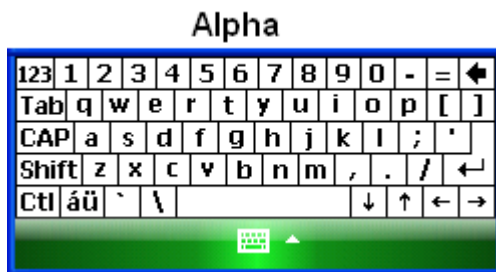
You can change input settings so that as you enter text in a program, scrolling occurs automatically when the text reaches the bottom of the screen.

1. Tap **Start** menu > **Settings** > **Personal** tab > **Input**.
2. Tap the **Options** tab, and select the **Scroll upon reaching the last line** check box.
3. Tap **OK**.



To change input panels:

1. The standard alpha keyboard is the default.
2. For numeric, tap on **123** keyboard in the upper left corner of the main keyboard.
3. For international, tap on **áü** key in the lower left corner of the alpha keyboard.



International

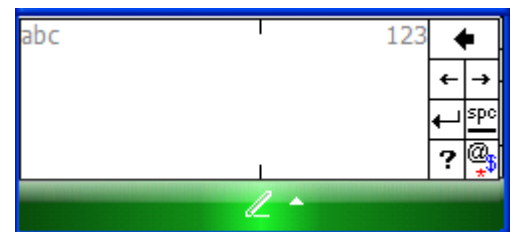


Using Block Recognizer

Use a single stroke to write letters, numbers, symbols and punctuation, which are converted into typed text. Block recognizer is available when text entry is possible.

To enter text using Block Recognizer:

1. From a program, tap the **input selector** arrow and then **block recognizer**.
2. Write **characters, numbers and symbols** in the designated writing area.
 - Enter **letters** by writing in the abc (left) area of the box.
 - Enter **numbers** by writing in the 123 (right) area of the box.
 - Enter **symbols and punctuation** by tapping in either area of the box and then writing the desired character.



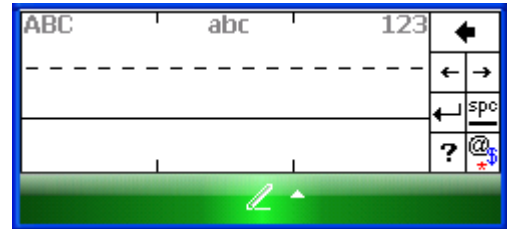
TIP: For help with writing characters with block recognizer, tap the question mark near the writing area.

Using Letter Recognizer

With letter recognizer, you can write individual letters, numbers and punctuation and have them converted into typed text.

To enter text using letter recognizer:

1. From a program, tap the **Input Selector** arrow and then **Letter Recognizer**.
2. Write **characters, numbers and symbols** in the designated writing area.
 - Enter **capital letters** by writing in the ABC (left) area of the box.
 - Enter **lower case letters** by writing in the abc (middle) area of the box.
 - Enter **numbers** by writing in the 123 (right) area of the box.
 - Enter **punctuation and symbols** by tapping in either area of the box and then writing the desired character.



TIP: For help with writing characters with letter recognizer, tap the question mark near the writing area.

Using Transcriber

Transcriber works transparently in the background of programs that accept user input.

To start transcriber:

1. Start a **program** such as Word Mobile.
2. Tap the **Input Panel icon** at the bottom center of the screen and tap the **Input Selector arrow**.
3. Tap **Transcriber**. The transcriber introductory screen appears.
4. Tap OK to close the introductory screen.







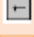



TIP: To turn transcriber on and off, tap the transcriber icon.




To show or hide the transcriber toolbar:

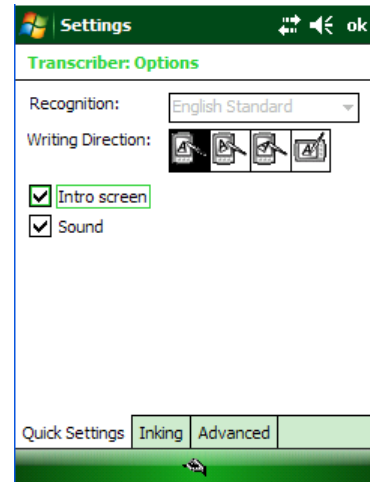
The transcriber toolbar, which appears at the bottom of the screen when transcriber is open, provides easy access to several tools – enter, space and backspace buttons, and left and right arrow buttons.

1. From a program, tap the **Transcriber** icon at the bottom of the screen.


Tap	To
	Open the options dialog box, where you can set options such as writing direction, text entry and shorthand.
	Open letter shapes , where you can set your personal writing styles to maximize recognition.
	Use the miniature keyboard to quickly enter numbers, punctuation and other symbols.
	Change the character recognition mode. <ul style="list-style-type: none"> • a mode. This is the default for optimum handwriting recognition. • 123 mode. Numbers and some letters are allowed and the calculator is activated. • A mode. All letters are automatically capitalized. <p>If you are in A or 123 mode, recognition returns automatically to the default mode once you lift the stylus.</p>
	Insert a space at the cursor.
	Insert a paragraph return at the cursor.
	Move the cursor one space to the left.
	Move the cursor one space to the right.
	Move the cursor one space back and erase any text.
	Open the transcriber help.

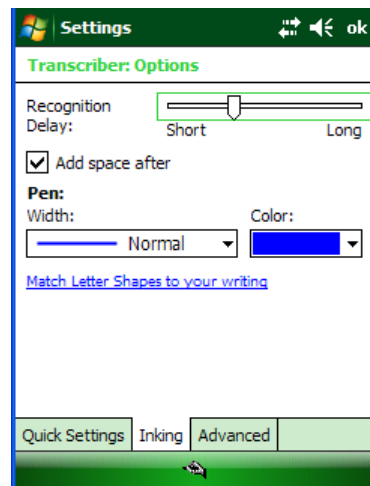
To set transcriber startup options:

1. From a program, tap  on the transcriber toolbar.
2. On the **Quick Settings** tab, set any of the following options:
 - In recognition, the **language transcriber** recognizes Standard English (Default).
 - In writing direction, tap the **picture** that most closely represents the angle at which you write on your device. For example, if your writing slants to the left, tap the second option.
 - Select the **intro screen** check box to display the short introductory screen when transcriber first opens.
 - Select the **sound** check box to turn on transcriber sounds.



To set transcriber text entry options:

1. From a program, tap  on the transcriber toolbar.
2. On the **Inking** tab, set any of the following options:
 - Adjust the **Recognition Delay** slider.
 - Select the **Add space after** check box to add a space after each word that transcriber recognizes.
 - Under **pen**, choose the line width and color for handwriting.
 - Tap **match letter shapes to your writing** to open the letter shapes feature where you can train transcriber to recognize your handwriting.




To write with transcriber:


Transcriber allows you to write in cursive, print or a combination of both.

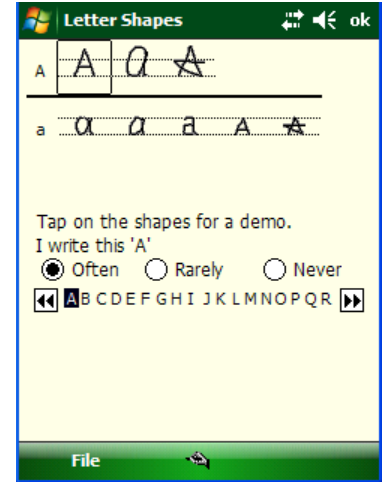
1. Within a program, position the **cursor** where you want text to appear.
2. Use the stylus to **write anywhere on the screen**. The writing will be converted to text shortly after you lift the stylus from the screen.

To use the transcriber calculator:

1. From a program, tap  on the transcriber toolbar until **123** is selected.
2. Write **the equation**. If you write 2+2=, transcriber returns 2+2=4.

To match letter shapes to handwriting:

1. From a program, tap  on the transcriber toolbar.
2. On the **Inking** tab, tap **match letter shapes to your writing**.
3. At the bottom of the letter shapes screen, tap the **character** you want to explore.
4. At the top of the screen, double-tap the **picture** of this character.
5. The character slowly redraws, showing the handwriting sequence.
6. Tap how often you write the character in that way: **often**, **rarely** or **never**.
7. Click **OK**.



To optimize handwriting recognition for transcriber:

If transcriber does not recognize your handwriting as accurately or quickly as you'd like, you can optimize handwriting recognition.

- Select the **writing direction** picture that best matches the slant of your handwriting.
- Use **letter shapes** to eliminate letter shapes that you do not use or to learn methods of writing characters that will make them easier for transcriber to recognize.
- Try **writing** in another format. If you have been printing, try writing cursive, or if you have been writing in both cursive and print, try printing alone.
- Adjust the **speed** at which transcriber returns text after you write.
- Add a **user dictionary** that contains special terms you may be using, such as medical or legal terms.

You can also verify that you are using your letter shapes user profile.

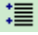
To edit text using transcriber:

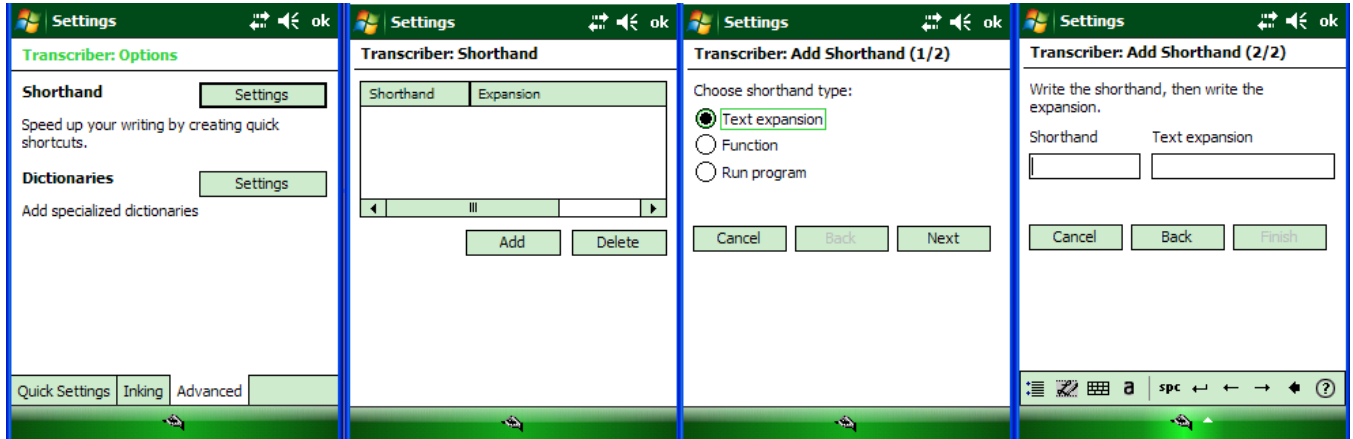
1. From a program, draw **a line across the text** you want to edit. After you lift the stylus from the screen, the line will disappear and the selected text will be highlighted.
2. Do either of the following:
 - Use **gestures** to capitalize letters or insert a space.
 - Use **handwriting recognition** alternates to quickly correct text and add words to the transcriber dictionary.

To create a dictionary for transcriber:

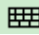
1. On your PC, use a program such as Notepad, and type each term you want to include in the dictionary on a separate line.
2. When you are finished, on the **File** menu, click **Save As**.
3. In the **Save as type** box, select **All Files**, and enter a name for the file using a .dct extension (for example, *mydictionary.dct*).

To create shorthand for entering words:


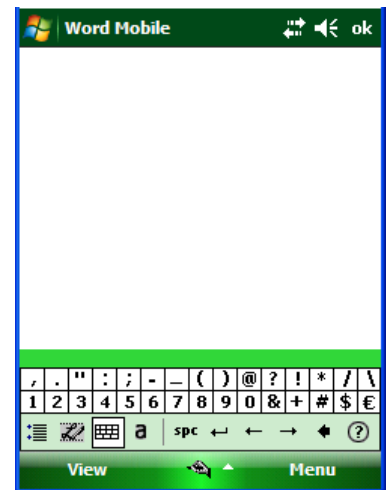
1. From a program, tap  on the transcriber toolbar.
2. On the **Advanced** tab, under **Shorthand**, tap **Settings**.
3. In the **Transcriber: Shorthand** dialog box, tap **Add**.
4. Tap **Text expansion**, and tap **Next**.
5. Write the **Shorthand** you want to use, then enter the **replacement text** to display.
6. Tap **Finish**, then tap **OK**.



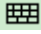
To use the transcriber keyboard

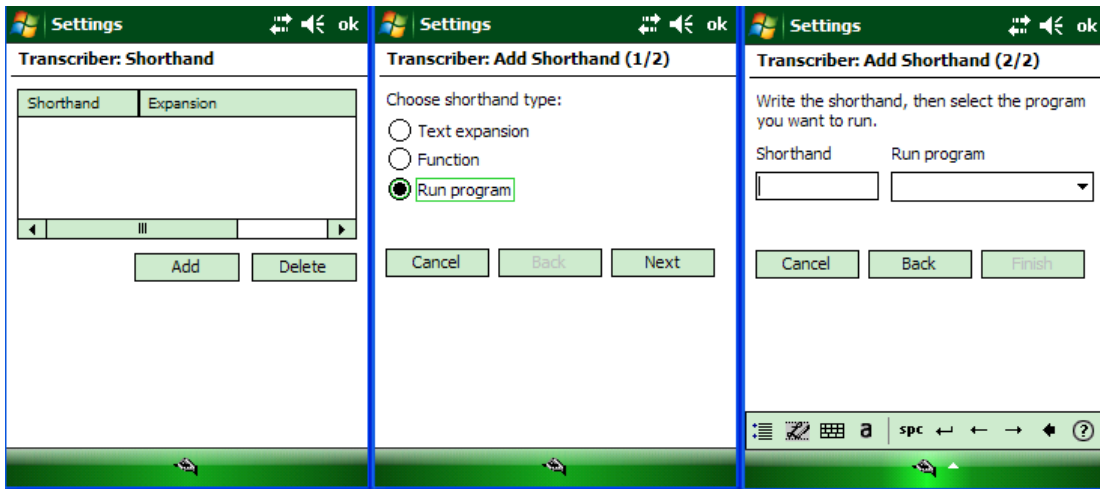
From a program, tap  on the transcriber toolbar. The keyboard remains visible until you tap the button again.

TIP: To reposition the keyboard, tap and hold the **title bar** and **drag** to the desired location. With no text selected, you can also open the keyboard by doing this gesture.

To create shorthand that will open a program:

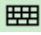
1. From a program, tap  on the transcriber toolbar.
2. On the **Advanced** tab, under **Shorthand**, tap **Settings**.
3. In the **Transcriber: Shorthand** dialog box, tap **Add**.
4. Tap **Run Program**, and tap **Next**.
5. Write the shorthand text you want to use, then select the program you want transcriber to run when you write the shorthand.
6. Tap **Finish**, then tap **OK**.

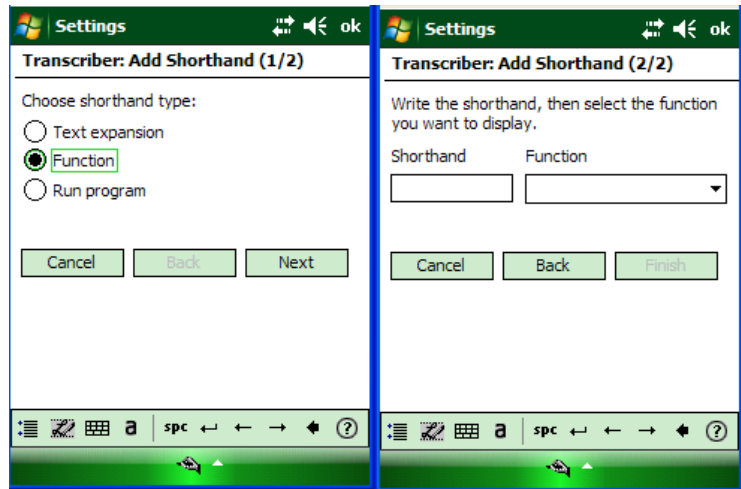


ⓘ IMPORTANT NOTE!


The next time you write the shorthand text, the appropriate program will open.

To set up shorthand functions:

1. From a program, tap  on the transcriber toolbar.
2. On the **Advanced** tab, under **Shorthand**, tap **Settings**.
3. In the **Transcriber: Shorthand** dialog box, tap **Add**.
4. Tap **Function** > **Next**.
5. Write the **Shorthand** you want to use and then tap the **Function** the shorthand represents.
6. Tap **Finish**, and tap **OK**.













To use handwriting recognition alternates:

1. From a program, draw **a line across the word** you want to correct or add to the dictionary.
1. After you lift the stylus, the line will disappear and the word will be highlighted.
2. Do the **quick correct**  **gesture**.
3. On the **alternates** menu, do one of the following:
 - To correct the selected word, tap the **word** you want to replace it with.
 - To add the selected word to the dictionary, tap **Add To Dictionary**.

To use gestures in transcriber:


Use quick strokes of the stylus to edit your text. Do the enter, space and tab gestures while writing text to insert returns, spaces or tabs.

Do	To
	Insert a paragraph return at the cursor. The horizontal portion of the gesture must be at least two times longer than the vertical portion.
	Insert a space at the cursor. The horizontal portion of the gesture must be at least two times longer than the vertical portion.
	Move the cursor one space back and erase any text. Do the gesture by drawing a line from right to left.
	Open the menu of alternate words if a word is selected or the onscreen Transcriber keyboard if no text is selected. Do the gesture by drawing a line straight down and back up.
	Change the capitalization of a selected letter, word, or block of text. Do the gesture by drawing a line straight up.
	Undo the last action. Do the gesture by drawing a line straight up and back down.
	Copy the selected text. Do the gesture by drawing a line from left to right and back.
	Cut the selected text. Do the gesture by drawing a line from right to left and back.
	Paste copied or cut text. Do the gesture by drawing a line from the lower left of the screen diagonally up toward the right and back down to the right.
	Insert a tab. The horizontal portion of the gesture must be at least two times longer than the vertical portion.

TIP: You can also use the enter, space, and backspace buttons on the transcriber toolbar.


To match letter shapes to handwriting:

Use the letter shapes feature to match your handwriting to a series of letter shapes recognized by transcriber or to learn methods of writing characters that transcriber will recognize more easily.

1. From a program, tap  on the transcriber toolbar.
2. On the **Inking** tab, tap **match letter shapes to your writing**.
3. At the bottom of the letter shapes screen, tap the **Character** you want to explore.
4. At the top of the screen, double-tap the **picture of this character**. The character slowly redraws, showing the handwriting sequence.
5. Tap how often you write the character in that way: **often, rarely** or **never**.
6. Click **OK** when you are finished.

To save a letter shapes user profile:

You can save a user-specific letter shapes profile that you can open each time you use transcriber.


1. From a program, tap  on the transcriber toolbar.
2. Match the **appropriate letter shapes** to your handwriting.
3. When finished, tap **File > Save**.
4. Enter a **name** for the user-specific letter shapes profile and select the type (.LSS is the default) and location for the file.
5. Tap **Save**.

ⓘ IMPORTANT NOTE!

*To open a letter shapes profile, tap **File > Open > double-tap the Profile**.*

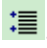
To select a letter shapes user profile:

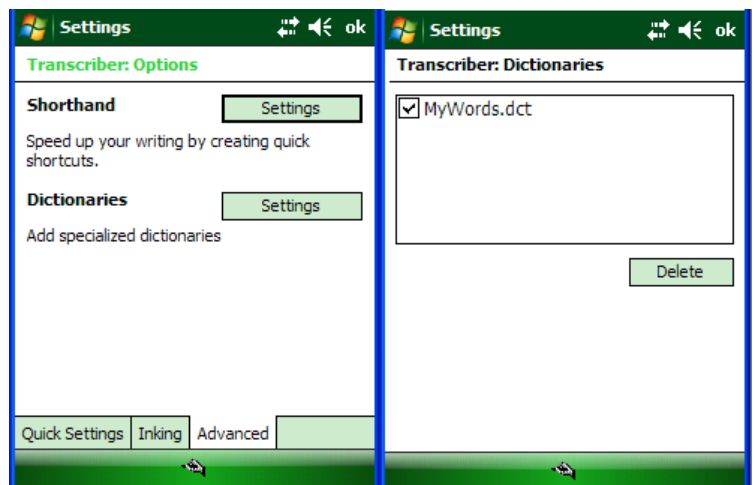
The transcriber letter shapes feature supports two profiles, master and guest. The master profile is not affected by any changes made to the guest profile.

1. From a program, tap  on the transcriber toolbar.
2. Tap **File** and one of the following:
 - **Master** if you are the primary user.
 - **Guest** if you are not the primary user.

To add a dictionary to a device:

To add a dictionary to your device, the PC and the device must be connected and synchronized.

1. On the PC, open **ActiveSync** and click **Explore**.
2. Copy the **dictionary file** (a file with a .dct extension) to the **Dictionaries** folder on your device.
3. On the device, open a program and select transcriber as the input method. If the introductory screen appears, tap **OK** to close it.
4. On the transcriber toolbar, tap .
5. On the **Advanced** tab, under **Dictionaries**, tap **Settings**.
6. In the **Transcriber: Dictionaries** list, select the check box next to the new dictionary, and tap **OK**. The dictionary is now ready for use by transcriber.

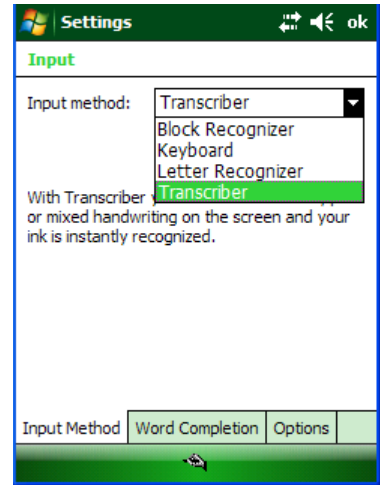


To change the text input method:

Depending on your preference, you can use the onscreen keyboard or a handwriting recognition feature such as Block Recognizer, Letter Recognizer, and Transcriber to enter text in programs.

1. Tap **Start** menu > **Settings** > **Personal** tab > **Input**.
2. On the **Input method** tab, select block recognizer, letter recognizer or transcriber.
3. Tap **OK**.

TIP: You can also change the text input method from within a program by tapping the input selector arrow and tapping an input method.



Block recognizer	Use a single stroke to write letters, numbers, symbols, and punctuation which are then converted into typed text. Do gestures to enter return and backspace.
Keyboard	Tap keys on the keyboard displayed on the screen to enter text.
Letter recognizer	Write individual letters, numbers, and punctuation which are converted into typed text.
Transcriber	Write in cursive, print or mixed handwriting (consisting of both cursive and print) and convert your writing into typed text.

Exchange and Update Data using ActiveSync

ActiveSync software lets you synchronize data between an XG100WM and a PC. To synchronize data, you must connect your XG100WM and PC directly using a cable or cradle or use a modem or network.

Create a User Profile

You can create a user profile to load data into a Janam XG100WM without associating that data with a user name.

To create a user profile:

1. Tap **Start** menu > **Settings** > **Personal** tab.
2. Choose **Owner Information**.
3. Enter **identification**, **notes** and **display** information.
4. Tap **OK** to save changes.

Identification

Notes

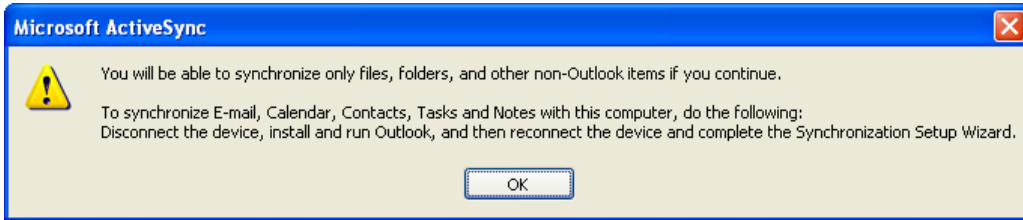
Display

Set up/Delete a Partnership

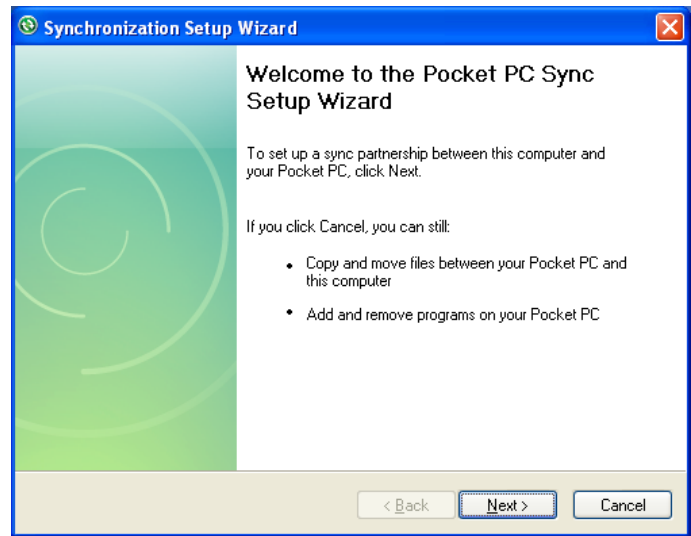
There are two types of partnerships that you can create with your Janam XG100WM. You can automatically synchronize the files on your handheld device with your PC when you start your device. Or you can establish a guest connection and manually copy the files you want to synchronize.

To set up a partnership to automatically sync files:

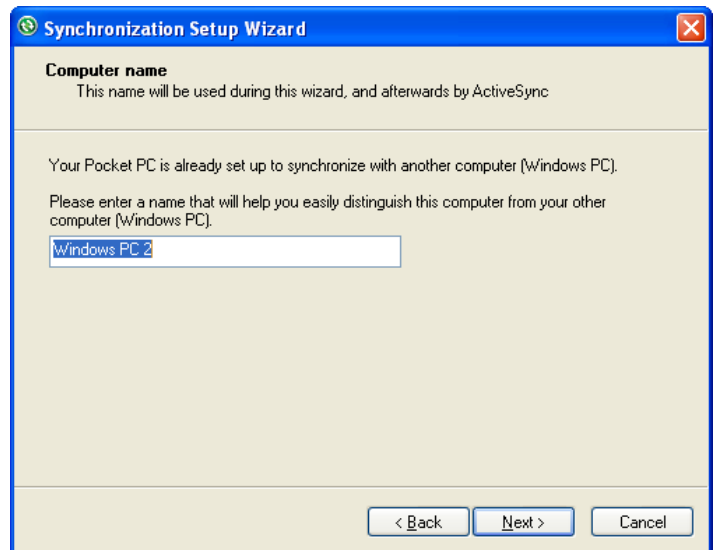
1. On your PC, select **Start menu > Programs > ActiveSync. Microsoft ActiceSync Version 4.5.0 (Build 5096)** is used in this manual.
2. Connect your **Janam XG100WM to your PC.**
3. **Microsoft ActiveSync** dialog box prompts. Tap **OK** to proceed.



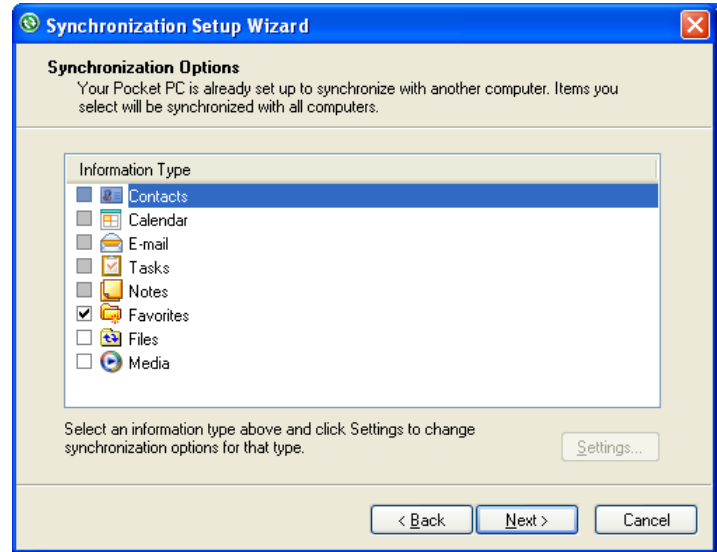
4. **Synchronization Setup Wizard** window appears. Tap **Next** to setup the partnership connection.



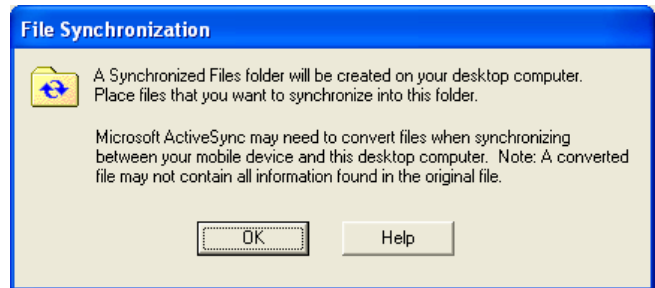
5. If the device has already been set up to synchronize with another computer, the **Synchronization Setup Wizard (Computer name)** window will appear. Use the default name or enter a new name. Then tap **Next** to proceed.



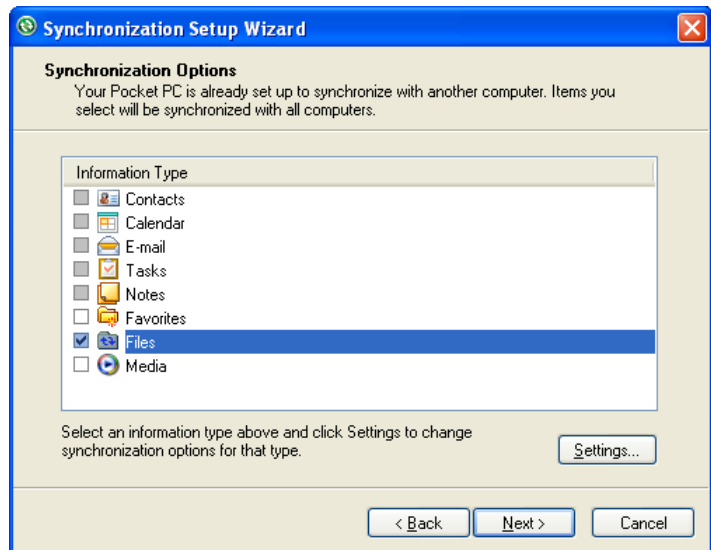
6. Select the **Files** you want to sync between your mobile device and your computer. Then tap **Next**.



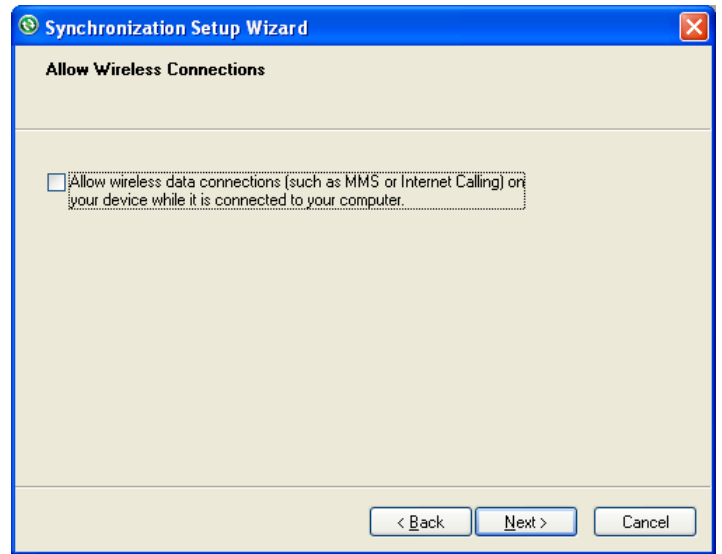
7. Note: when you select **Files**, an additional screen appears (shown below) with further information. Read carefully before proceeding, because your files may be converted. Tap **OK** proceed.



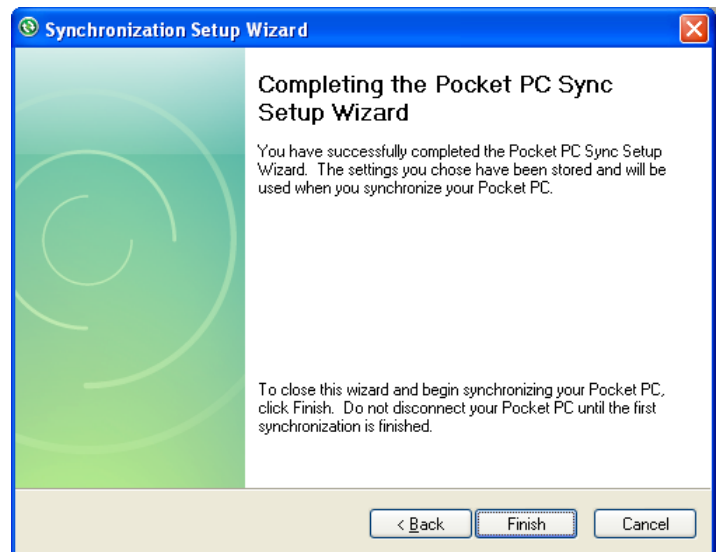
8. **Synchronization Options** window appears again. Tap **Next** to proceed.



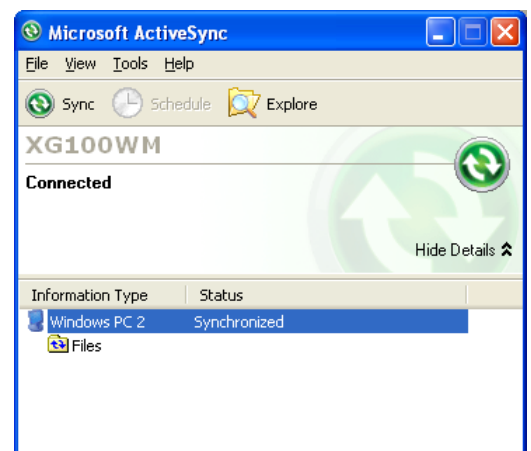
9. **Allow Wireless Connections** window appears. Check the checkbox for Allow wireless data connections, if wireless connection is allowed when the device is connected to the desktop PC.




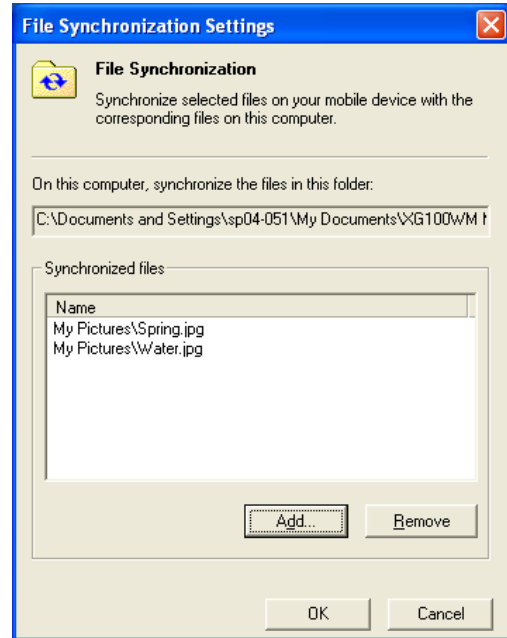
10. **Completing the Pocket PC Sync Setup Wizard** window appears. Tap **Finish**.



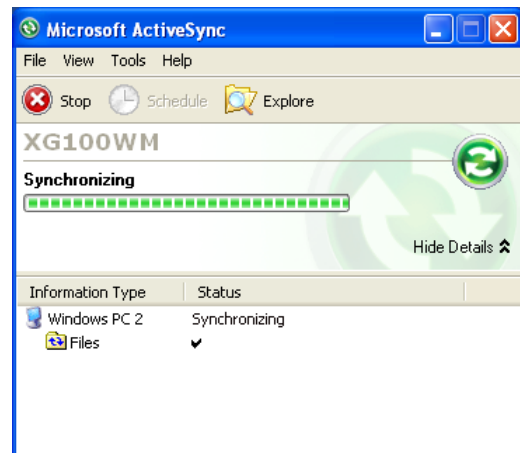
11. Your **partnership** setup is completed. **Microsoft ActiveSync** window appears with the device name **XG100WM** (in this example) and status shows as **Synchronized**. File synchronization will be carried out automatically when there is file added or remove from the **\My Document** folder of the device.



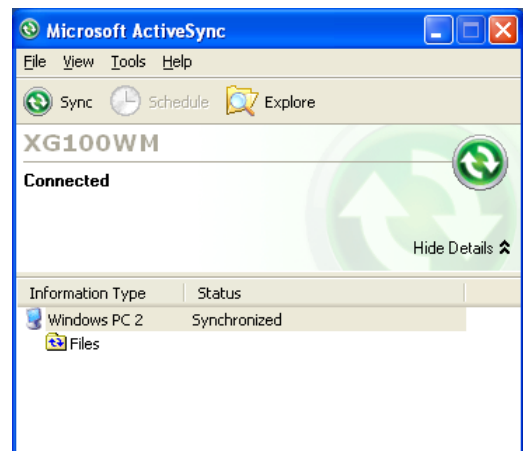
12. To add/remove files to the device, tap on  **Files** on the **Microsoft ActiveSync** window. **File Synchronization Settings** window appears. Tap on **Add** button to add files to **\My Documents** folder of the device and **Remove** button to delete files **\My Documents** folder of the device.



13. After adding and removing files, the auto-file synchronizing is performed.

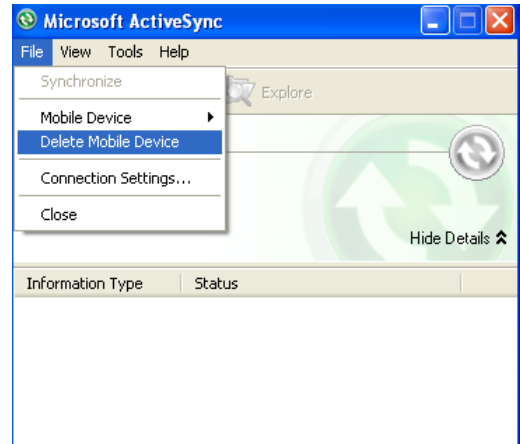


14. After synchronization is completed, the status of Microsoft ActiveSync window changes from **Synchronizing** to **Synchronized** again.

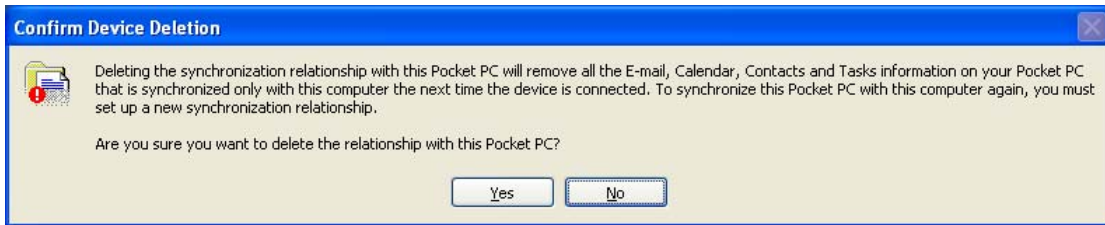


To delete a partnership:

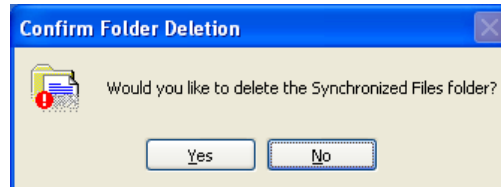
1. Unplug USB cable to break the USB ActiveSync connection between the device and the PC. Go to **File > Delete Partnership** in the ActiveSync manager.



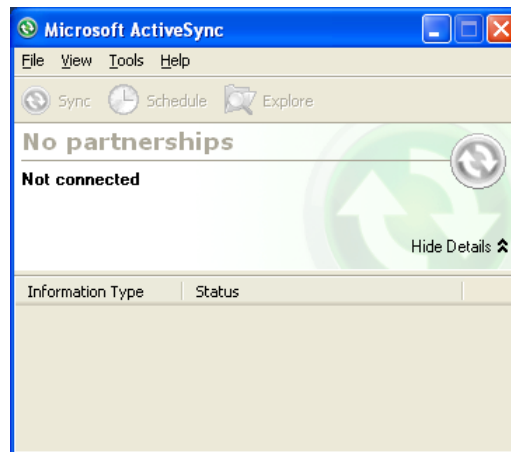
2. Click **Yes** when confirmation screen appears.



3. If there is Synchronized Files folder, confirmation for folder deletion screen will appear. Click **Yes** to proceed.

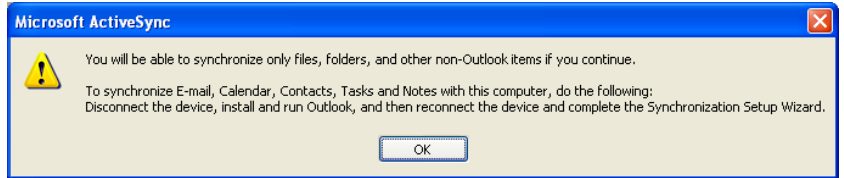


4. **Microsoft ActiveSync** window shows **No partnerships**.
5. You will need to **re-establish the partnership** when you connect your Janam YG100WM to your PC, or you will need to connect as a guest.

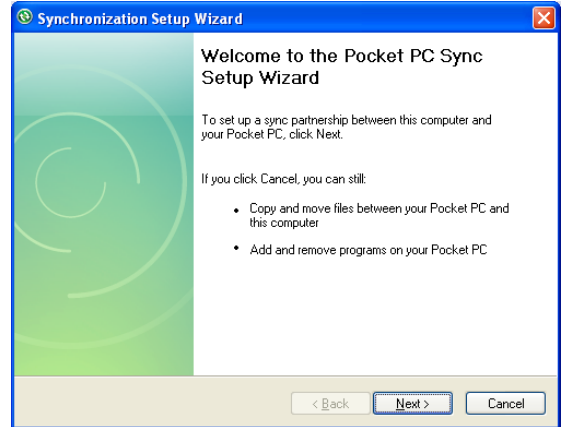


To set up a guest partnership:

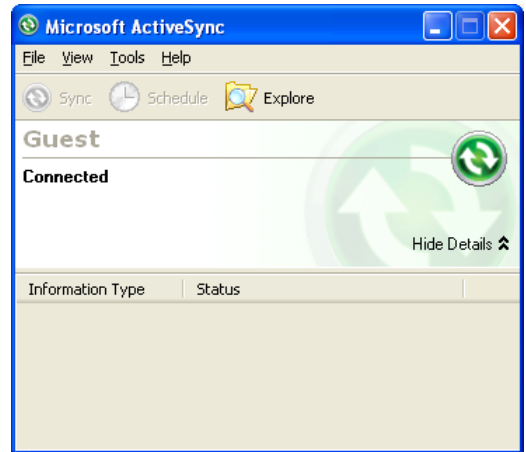
1. Connect your **Janam YG100WM** to your PC.
2. **Microsoft ActiveSync** dialog box prompts. Tap **OK** to proceed.



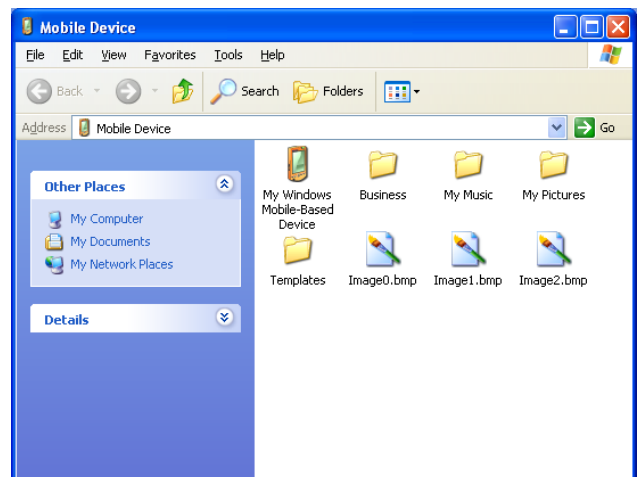
3. **Synchronization Setup Wizard** window appears. Tap **Cancel** to setup a **Guest** connection.



4. The guest connection is established, as shown.
5. Select **Explore** to manually copy the files on your handheld to your desktop computer.



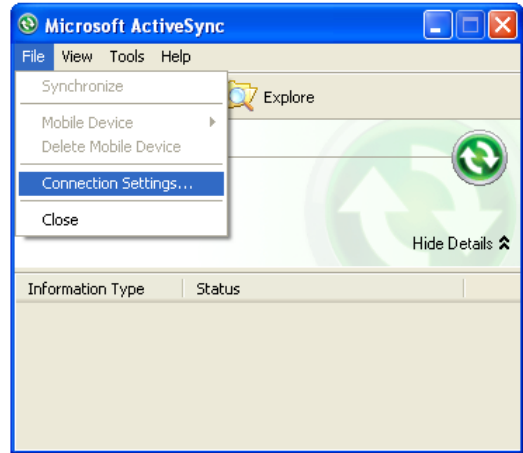
6. Windows Explorer will appear with the folders and files on your mobile device.
7. Select the **file or file(s)** you want to move or copy.
8. Choose **copy files** and select **destination folder** on your PC.



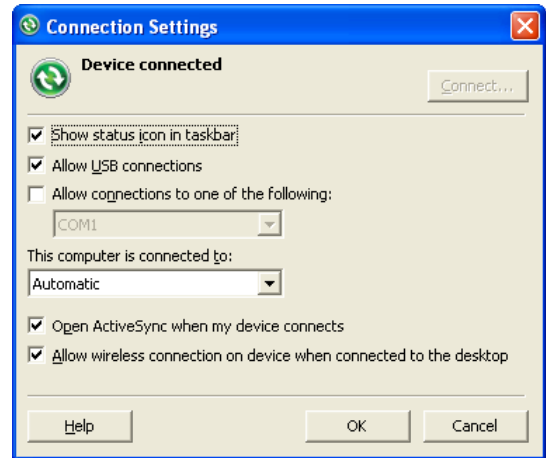
Partnership Settings

To change partnership connection settings:

1. Click the **ActiveSync** icon in your Windows system tray (bottom right corner of taskbar).
2. Choose **File > Connection Settings** from the ActiveSync manager menu.



3. The Connection Settings window appears. Tap **OK**.



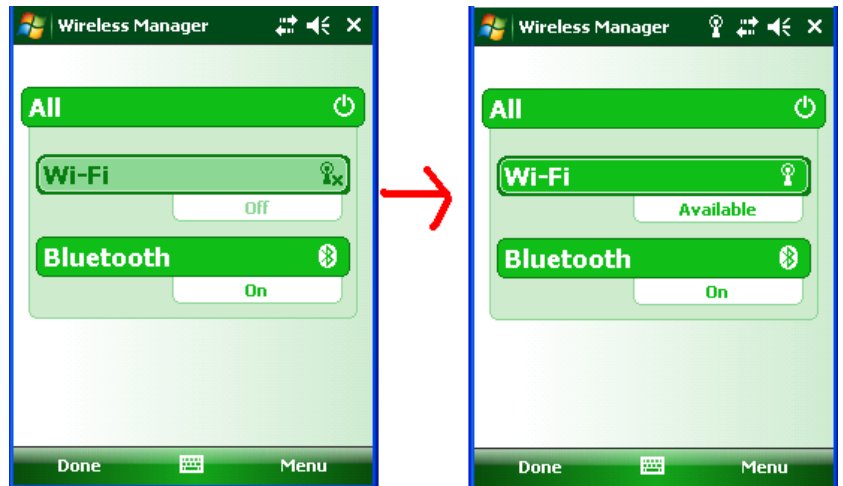
802.11 Wireless Configuration

The following section details the basic 802.11 wireless configuration for your Janam XG100WM.

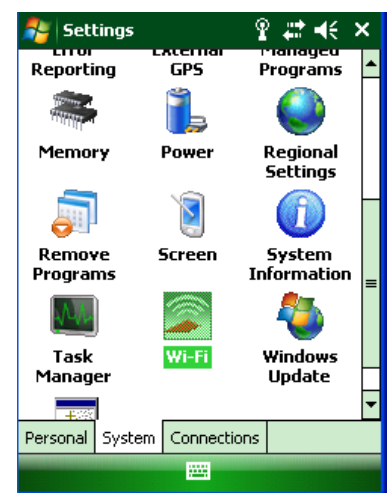
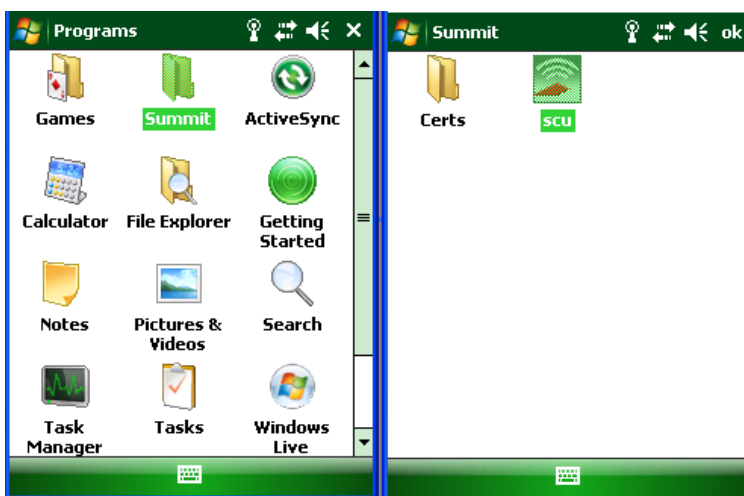
Wireless local area network access

To set up network profile:

1. Tap **Start** menu > **Settings** > **Connections** tab > **Wireless Manager**
2. Click **Wi-Fi** to toggle it ON.

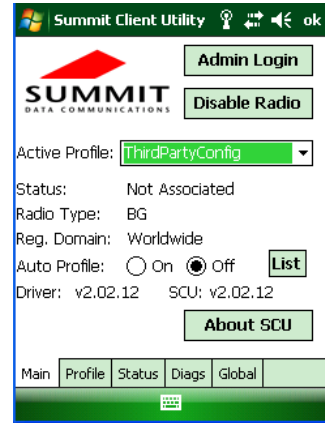


3. Click **Start** > **Programs** > **Summit** > **scu** Or **Start** > **Settings** > **System** tab > **Wi-Fi**



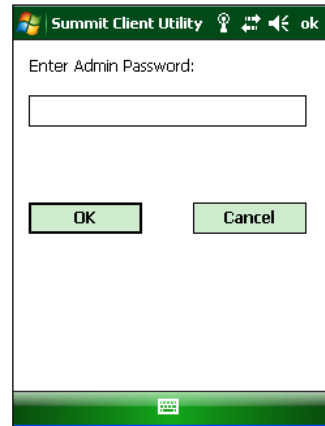
By default, **Active Profile** is set to "ThirdPartyConfig".

4. Tap **Admin Login**.

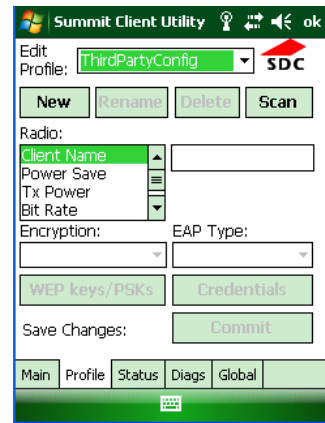


5. Enter the password **SUMMIT**

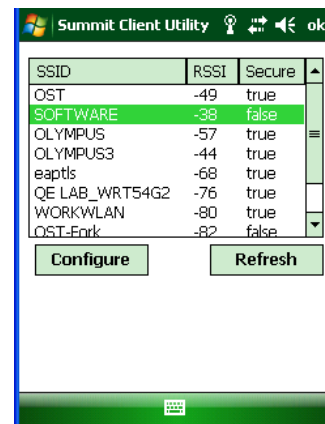
Note: Use all uppercase letters for the password.



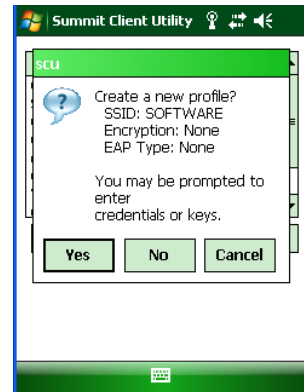
6. Click **Profile** tab and double tap **Scan** button to search for nearby AP's.



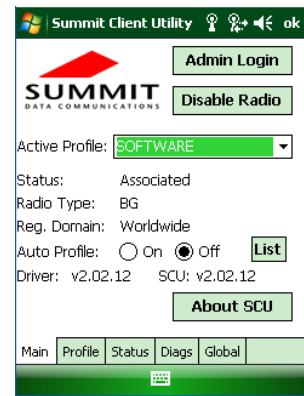
7. Select the desired network and click **Configure** button to set the network profile. Eg: **SOFTWARE**



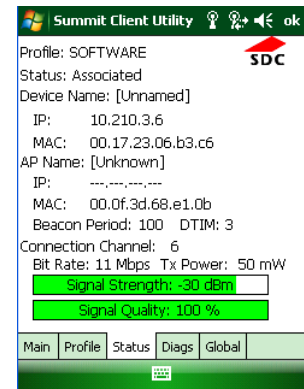
- Click **Yes** button to complete the new profile configuration.



- On the **Main** tab change active profile to the new profile created in the last step. Eg: **SOFTWARE**



- Click tab **Status** tab to check the connection status.



Bluetooth

Overview

Bluetooth is a short-range wireless communications technology. Devices with Bluetooth capabilities can beam to exchange information over a distance of about 10 meters (30 feet).

Unlike infrared, you don't need to line up the devices to beam information with Bluetooth. You can even beam information to a device in a different room, as long as it's within range.

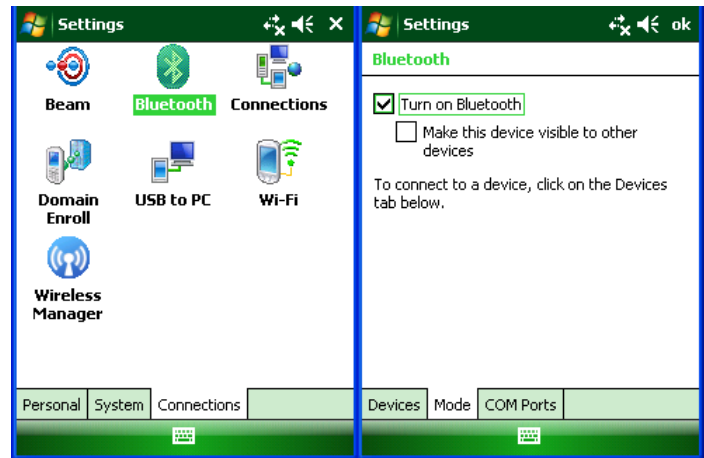
You can use Bluetooth as follows:

- Beam information, such as files, appointments, tasks and contact cards, between devices that have Bluetooth capabilities.
- Use a Bluetooth service. Once you connect to another device or computer using Bluetooth, you can locate and use any of the services available on that device. There are several ways to set up your computer for wireless access, and the following section details the general instructions needed to set up Bluetooth on your Janam XG100WM. Please note that complex or custom installations may require additional expertise from Janam's technical and support team.

To Turn Bluetooth On/Off

1. Tap **Start** menu > **Settings** > **Connections** tab.
2. Tap **Bluetooth**.
3. Select or clear the **turn on Bluetooth** check box.

NOTE: By default, Bluetooth is turned off. If you turn Bluetooth on, then turn off the XG100WM, Bluetooth also turns off. When you turn on the device again, Bluetooth will automatically turn on.

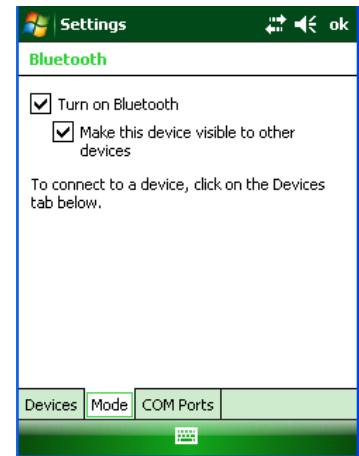


To make a device visible

Other devices with Bluetooth capabilities can detect your device and attempt to beam information to it, establish a partnership, or use a Bluetooth service.

1. Tap **Start** menu > **Settings** > **Connections** tab.
2. Tap **Bluetooth**.
3. Select the **Turn on Bluetooth** check box, and then select the **Make this device visible to other devices** check box.

TIP: If you no longer want your device to be visible, clear the **make this device visible to other devices** check box.



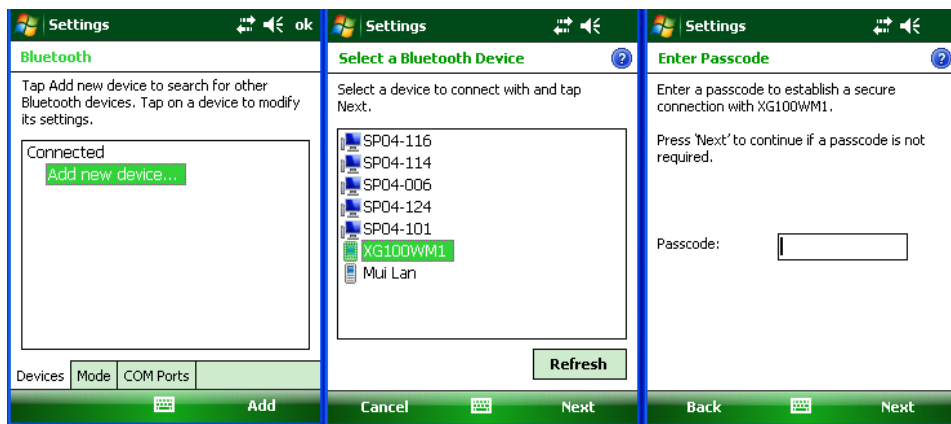
Bluetooth partnerships

A partnership is a relationship that you create between your XG100WM and another Bluetooth device to securely exchange information. Creating a partnership involves entering the same Bluetooth passcode on both devices. Once a partnership is created, the devices need only have Bluetooth turned on to exchange information; they do not need to be visible.

You need only create a partnership once between two devices. Then, the devices can exchange information without entering the passcode.

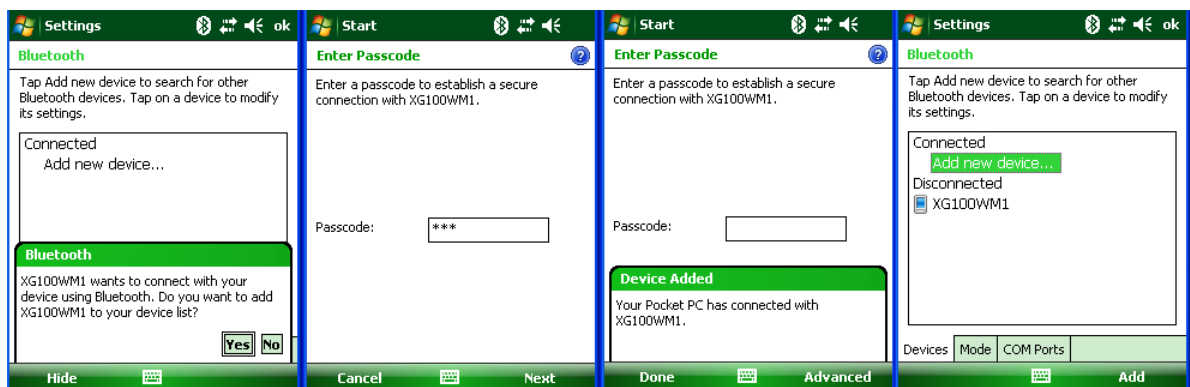
To create a Bluetooth partnership

1. Ensure that the two devices are turned on, visible, and within close range.
2. Tap **Start** menu > **Settings** > **Connections** tab.
3. Tap **Bluetooth** > **Devices** tab > **Add new device**. Your device searches for other devices with Bluetooth capabilities and displays them in the list.
4. Tap the name of the device to be paired, and tap **Next**.
5. In **Passcode**, if you want to use a passcode (recommended for enhanced security), enter an alphanumeric passcode between 1 and 16 characters, and tap **Next**. Otherwise, leave the passcode blank, and tap **Next**.
6. Enter the same passcode on the other device.



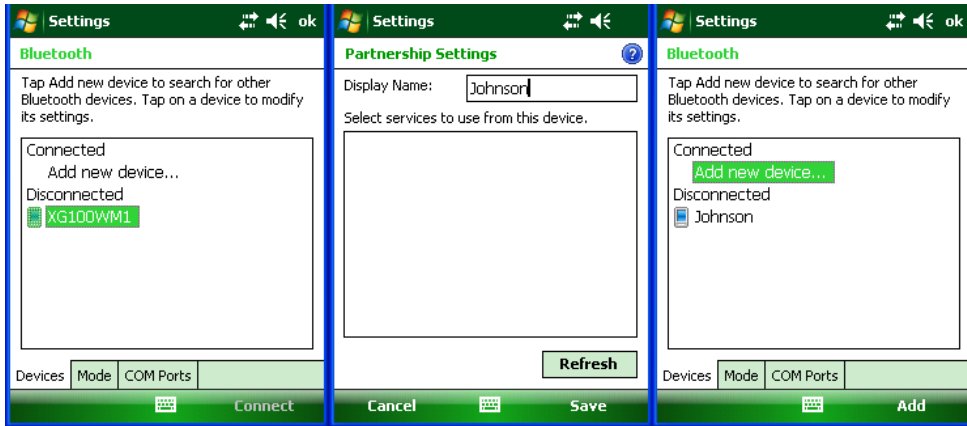
To accept a Bluetooth partnership

1. Ensure that your device is turned on, visible and within close range.
2. When prompted to accept a partnership with the device that is requesting the relationship, tap **Yes**.
3. If a passcode is requested, enter an alphanumeric passcode between 0 and 16 characters in **passcode**, and tap **Next**. You must enter the same passcode that was entered on the device requesting the partnership. Using a passcode provides enhanced security.



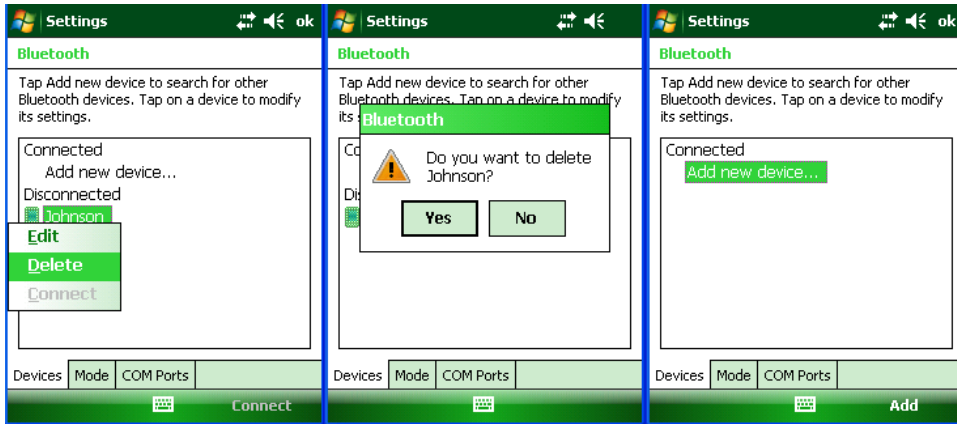
To Rename a Bluetooth Partnership

1. Tap **Start** menu > **Settings** > **Connections** tab.
2. Tap **Bluetooth** > **Devices** tab.
3. Tap the **partnership** to be renamed. A pop-up menu appears. Select **Edit**.
4. Enter a new name for the partnership and tap **Save**.



To Delete a Bluetooth Partnership

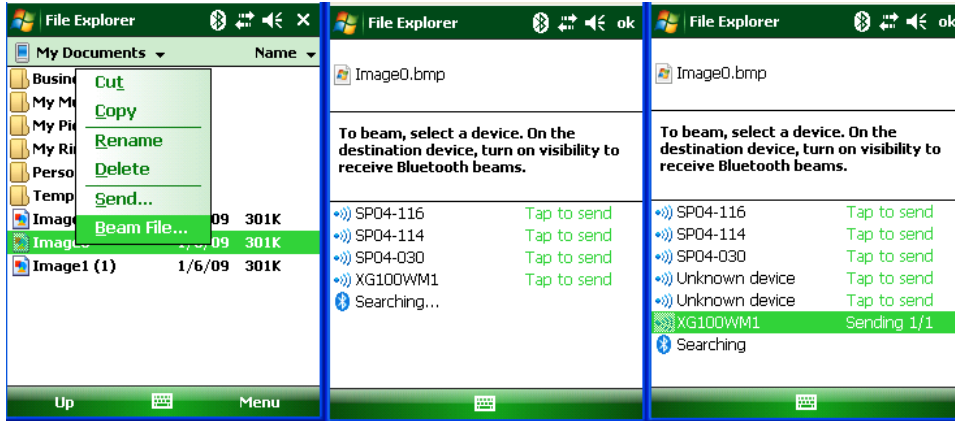
1. Tap **Start** menu > **Settings** > **Connections** tab.> **settings** > **connections** tab.
2. Tap **Bluetooth** > **Devices** tab.
3. Tap and hold the partnership you want to end. Select Delete from the pop-up menu.
4. Tap **Yes** to confirm.



Bluetooth Beam

To Send a File Via Bluetooth Beam

1. Tap and hold on the file you want to beam to other device.
2. A pop-up menu appears. Select **Beam File**.
3. Nearby Bluetooth devices are displayed on the list.
4. Tap on the targeted device to beam the file.



To Receive a Bluetooth beam

Your device will not detect and notify you of incoming Bluetooth beams unless you set it up as follows:

1. Tap **Start** menu > **Settings** > **Connections** tab > **Beam**.
2. Select the **Receive all incoming beams** check box.
3. Ensure that your device is turned on, visible and within close range of the device that is beaming the information.
4. When prompted with **“You are receiving data. To stop receiving, press Cancel”**, tap **Hide** to continue or no action to continue. If you want to reject the beamed information, then tap **Cancel**.
5. The next message is **“Do you want to save “filename” to your device?”**, tap **Yes** to receive the beamed information. The received file is stored in **\My Documents** folder of the device.



Bluetooth virtual COM ports overview

Some programs can connect only through a serial (COM) port. This can be true even if the device itself is Bluetooth-enabled. To make it possible for such programs to use a Bluetooth connection, you must set up a virtual COM port. Once created, this virtual port can be used like any other COM port. You can use a virtual COM port for programs that, for example, connect to a GPS receiver, or to connect to a Bluetooth-enabled printer.

Here are some examples of how to use incoming and outgoing virtual COM ports.

Outgoing COM port: You have a program on your device that cannot use Bluetooth directly but can print to a serial (COM) port. You can create a Bluetooth partnership with a Bluetooth-enabled printer, and then set up an outgoing COM port (for example, COM 1). The program can then send print data to COM 1, which reaches the Bluetooth-enabled printer.

Incoming COM port: You have a Bluetooth-enabled GPS receiver, and your device has a GPS tracking program that expects to receive GPS data over a serial (COM) port. You can create a Bluetooth partnership with the Bluetooth-enabled GPS receiver, and then set up an incoming COM port (for example, COM 2). The GPS program can then send data to COM 2, which reaches the GPS receiver.

Even if both your device and another Bluetooth-enabled device contain programs that need to use serial ports to communicate, you can set up the appropriate virtual incoming and outgoing COM ports on each device so that the programs can use a Bluetooth connection to communicate.

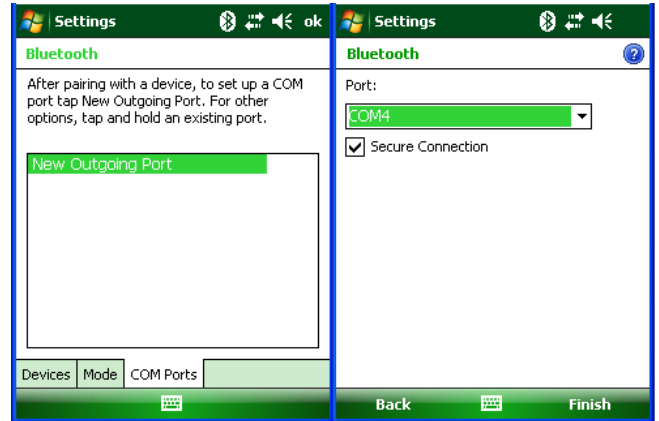
To set up an incoming Bluetooth COM port

1. Make sure that your device is currently connected to the other device via Bluetooth.
2. Tap **Start** menu > **Settings** > **Connections** tab.
3. Tap **Bluetooth** > **COM ports** tab.
4. Tap **New Incoming Port**.
5. Select a numbered COM port from the list. If the port cannot be created, it is in use. Select a different numbered port.
6. To use this COM port to communicate only with devices with which your device has a Bluetooth partnership, select the **Secure Connection** check box.
7. Tap **Finish**.

To set up an outgoing Bluetooth COM port


The list item **new outgoing port** will be available only if one or more Bluetooth-connected devices supports serial (COM) connections.

1. Make sure that your device is currently connected to the other device via Bluetooth.
2. Tap **Start menu > Settings > Connections** tab.
3. Tap **Bluetooth > COM ports** tab.
4. Tap **New Outgoing Port**.
5. Select a numbered COM port from the list. If the port cannot be created, it is in use. Select a different numbered port.
6. To use this COM port to communicate only with devices with which your device has a Bluetooth partnership, select the **Secure Connection** check box.
7. Tap **Finish**.



Regulatory and Maintenance

Regulatory and Safety Approvals

 The CE mark on the product indicates that the system has been tested to and conforms with the provisions noted within the 2004/108/EC Electromagnetic Compatibility Directive.

For further information, please contact: Janam Technologies; 100 Crossways Park West, Suite 105, Woodbury, NY 11797.

Janam Technologies shall not be liable for use of our product with equipment (i.e., power supplies, personal computers, etc.) that is not CE marked and does not comply with the Low Voltage Directive.

FCC and Canadian Compliance

XG Series mobile computers meet or exceed all applicable standards and have been manufactured to the highest level of quality. To see the specific labels associated with RF terminals configurations, visit www.janam.com. **Warning:** Changes or modifications to this unit not expressly approved by the party responsible for compliance could void the user authority to operate the equipment.

XG Series RF Terminals with 802.11b/g and Bluetooth

RF, regulatory and safety approvals

Parameter	Specification
RF approvals	
U.S.A.	FCC Part 15 Subpart C
Canada	RSS-210 issue 7:2007 annex 8
European Community	EN 300 328 v1.7.1:2006
Australia	AS/NZS 4268:2003+A1 :2005+A2 :2006

This device complies with Part 15 of the FCC Rules. Operation is subject to the following two conditions: (1) this device may not cause harmful interference; and (2) this device must accept any interference received, including interference that may cause undesired operation.

This equipment has been tested and found to comply with the limits for a Class B digital device, pursuant to Part 15 of the FCC Rules. These limits are designed to provide reasonable protection against harmful interference in a residential installation. This equipment generates, uses and can radiate radio frequency energy and, if not installed and used in accordance with the instructions, may cause harmful interference to radio communications.

However, there is no guarantee that interference will not occur in a particular installation. If this equipment does cause harmful interference to radio or television reception, which can be determined by turning the equipment off and on, the user is encouraged to try to correct the interference by one or more of the following measures:

- Reorient or relocate the receiving antenna.
- Increase the separation between the equipment and receiver.
- Connect the equipment to an outlet on a circuit different from that to which the receiver is connected.
- Consult the dealer or an experienced radio/TV technician for help.

If necessary, the user should consult the dealer or an experienced radio/television technician for additional suggestions. The user may find the following booklet helpful: "Something about Interference." This is

available at local FCC regional offices. Janam is not responsible for any radio or television interference caused by unauthorized modifications of this equipment or the substitution or attachment of connective cables and equipment other than those specified by our company. The correction is the responsibility of the user. Use only shielded data cables with this system.



This device and its antenna must not be co-located or operating in conjunction with any other antenna or transmitter. To maintain compliance with the FCC RF exposure guidelines for body-worn operation, do not use accessories that contain metallic components other than what is specified by the manufacturer.

This Class B digital apparatus complies with the Canadian ICES-003.

Cet appareil numérique de la Class B est conforme à la norme NMB-003 du Canada.


Operation is subject to the following two conditions: (1) this device may not cause interference, and (2) this device must accept any interference, including interference that may cause undesired operation of the device.

L'utilisation de ce dispositif est autorisée seulement aux deux conditions suivantes : (1) il ne doit pas produire de brouillage, et (2) l'utilisateur du dispositif doit être prêt à accepter tout brouillage radioélectrique reçu, même si ce brouillage est susceptible de compromettre le fonctionnement du dispositif.

To prevent radio interference to the licensed service, this device is intended to be operated indoors and away from windows to provide maximum shielding. Equipment (or its transmit antenna) that is installed outdoors is subject to licensing.

RF, Regulatory and Safety Approvals

Parameter	Specification
R&TTE	EN 300 328 v1.7.1:2006
	EN 301 489-1 v1.8.1:2005
	EN 301 489-17 v1.2.1:2002
	EN 60950-1:2006
	EN 50392:2004
Australia	AS/NZS CISPR 22:2006

This product is marked with  in accordance with the Class II product requirements specified in the R&TTE Directive, 1999/5/EC. The equipment is intended for use throughout the European Community. Its authorization for use in France is restricted as follows.

PAN European Frequency Range: 2.402-2.480 GHz

Restrictions in France:

Indoor use: Maximum power (EIRP*) of 100 mW for the 2400-2483.5 MHz band.

Outdoor use: Maximum power (EIRP*) of 100 mW for the 2400-2454 MHz band and maximum power (EIRP*) of 10 mW for the 2454-2483.5 MHz band.

Other Electrically Powered Devices

The radio in the XG Series terminal operates on the same frequency band as a microwave oven. Therefore, if you use a microwave within range of the XG100WM you may notice performance degradation in your wireless network. However, both your microwave and your wireless network will continue to function.

Care and Cleaning of Terminals

When needed, clean the image engine window and the LCD display with a clean, non-abrasive, lint-free cloth. The terminal can be cleaned with a damp cloth.

For European Community users

Janam Technologies complies with Directive 2002/96/EC of THE EUROPEAN PARLIAMENT AND OF THE COUNCIL OF 27 January 2003 on waste electrical and electronic equipment (WEEE).

Waste electrical and electronic equipment (WEEE) information

This product has required the extraction and use of natural resources for its production. It may contain hazardous substances that could impact health and the environment if not properly disposed.

In order to avoid the dissemination of those substances in our environment and to diminish the pressure on the natural resources, we encourage you to use the appropriate take-back systems for product disposal. Those systems will reuse or recycle most of the materials of the product you are disposing in a sound way.



The crossed out wheeled bin symbol informs you that the product should not be disposed of along with municipal waste and invites you to use the appropriate separate take-back systems for product disposal.

If you need more information on the collection, reuse and recycling of these systems, please contact your local region's waste administration. You may also contact your supplier for more information on the environmental performances of this product.

Battery Warning

CAUTION
RISK OF EXPLOSION IF BATTERY IS REPLACED
BY AN INCORRECT TYPE.
DISPOSE OF USED BATTERIES ACCORDING
TO THE INSTRUCTIONS

Use only Janam approved batteries such as the BAT-G1-001 and recharge batteries using only Janam approved chargers. Use only easily accessible wall outlets that are easily reached with the length of the supplied power cables.

The standard charger provides an easy and convenient way to charge the device. You can purchase the charger through an authorized dealer. Visit Janam's website www.janam.com for information.

The power outlet shall be installed near the equipment and shall be easily accessible.

GENERAL INFORMATION

1. Before using the standard charger, read all instructions and warnings.
2. Please retain this instruction for future reference.

WARNING

1. No user serviceable parts inside. Do not open the charger. The charger is not serviceable.
2. If found any damage or cracking on the enclosure of the charger, do not use the charger. This charger shall be disposed of.
3. Do not short-circuit the output terminals of the charger.
4. The charger is for indoor use only. Do not expose the charger to moisture or place the charger at location which could subject to water spillage.
5. The standard charger is designed for use with this mobile computer only. Do not use this charger for other purposes.

OPERATING INSTRUCTION

1. Insert the output plug of the standard charger to the barcode scanner before plug in the charger into ac power socket outlet.
2. Always unplug the standard charger from the socket outlet after use.
3. Ensure that your local power supply system complies with the technical data of the standard charger.