

SF51

Cordless Scanner

User's Guide



Intermec®

SF51

Cordless Scanner

User's Guide



Intermec®

Intermec Technologies Corporation

Worldwide Headquarters

6001 36th Ave.W.

Everett, WA 98203

U.S.A.

www.intermec.com

The information contained herein is provided solely for the purpose of allowing customers to operate and service Intermec-manufactured equipment and is not to be released, reproduced, or used for any other purpose without written permission of Intermec Technologies Corporation.

Information and specifications contained in this document are subject to change without prior notice and do not represent a commitment on the part of Intermec Technologies Corporation.

© 2005-2008 by Intermec Technologies Corporation. All rights reserved.

The word Intermec, the Intermec logo, Norand, ArciTech, Beverage Routebook, CrossBar, dcBrowser, Duratherm, EasyADC, EasyCoder, EasySet, Fingerprint, INCA (under license), i-gistics, Intellitag, Intellitag Gen2, JANUS, LabelShop, MobileLAN, Picolink, Ready-to-Work, RoutePower, Sabre, ScanPlus, ShopScan, Smart Mobile Computing, SmartSystems, TE 2000, Trakker Antares, and Vista Powered are either trademarks or registered trademarks of Intermec Technologies Corporation.

There are U.S. and foreign patents as well as U.S. and foreign patents pending.

Microsoft, Windows, and the Windows logo are registered trademarks of Microsoft Corporation in the United States and/or other countries.

Bluetooth is a trademark of Bluetooth SIG, Inc., U.S.A.

Keypoint is a registered trademark of Data Technologies, Inc.

Document Change Record

This page records changes to this document. The document was originally released as Revision 001.

Version Number	Revision Letter	Date	Description of Change
006	A	10/2008	<ul style="list-style-type: none">• Corrected the procedure describing how to upgrade the firmware on the scanner.• Converted document to new template/style.
005	A	12/2006	<ul style="list-style-type: none">• Added information on how to connect as a keyboard wedge using the Keyport Bluetooth application.• Updated part numbers and model numbers to support the RoHS compliant SF51.
004	A	1/2006	Added information to support firmware version 1.2 including these features: <ul style="list-style-type: none">• Additional trigger mode settings, level trigger mode enhancements, and support for the Trigger Timeout and Turn Off After Good commands.• Support for the EAN.UCC Composite, and TLC 39 bar code symbologies, the Code 128 FNC2 control character, the code mark Symbology ID setting, and the Matrix 2 of 5 ChinaPost start/stop code.• Data editing.• Added references to Keyport Lite, a keyboard wedge application supported on the SF51 for English QWERTY keyboards.
003	A	8/2005	Removed references to the HID keyboard profile, which is currently not supported on the SF51
002	A	6/2005	Added information to support firmware version 1.1 including these features: <ul style="list-style-type: none">• HID keyboard profile• SF51 Firmware Upgrade Utility

Contents

Before You Begin ix
Safety Information ix
Global Services and Support x
 Warranty Information x
 Web Support x
 Telephone Support x
 Service Location Support x
Who Should Read This Manual xi
Related Documents xi
Patent Information xi

1 Learning About the SF51 1

Introducing the SF51 Cordless Scanner 2
What's New? 2
Using the Battery 2
 Charging the Battery 3
 Checking the Battery Status 3
How to Turn On the SF51 4
Understanding the Lights 5
Understanding the Beeps 6
Scanning Bar Codes 7
Using Vibrate Alert 8

2 Connecting and Configuring the SF51 11

Connecting the SF51 to a Host Device 12
 Connecting to an Intermec Computer 13
 Connecting to a Host PC With the
 Bluetooth Adapter 14
 Connecting as a Keyboard Wedge 14
 Connecting Using Keypoint Bluetooth 15

Contents

Connecting Using Keypoint Lite 16
Collecting Data With Your SF51 18

Configuring the SF51 Parameters..... 18
Configuring the SF51 With EasySet 18
Configuring the SF51 From Your
Intermec Computer 20
Restoring Default Settings..... 20

Configuring Bluetooth Communications 21
Configuring Security 21
Configuring the Discoverable State of the SF51 .. 22

**3 Troubleshooting and Maintaining
the SF51 23**

Troubleshooting the SF51 24
Calling Product Support 24
Problems and Possible Solutions 25

Upgrading the SF51 27

Paging the SF51 30

Resetting the SF51 31

Cleaning the SF51 31

4 Configuration Command Reference..... 33

Using Configuration Commands 34

Configuration Commands By Function 35

SF51 Configuration Commands..... 38
Administrator Reset Factory Defaults..... 38
Beep Duration..... 38
Beep Frequency..... 38
Beep Volume 39
Bluetooth Connect/Disconnect 39
Bluetooth Device Name 39

Contents

Bluetooth Device Page	39
Bluetooth Discoverable.....	39
Bluetooth PIN	40
Bluetooth Profile	40
Bluetooth Security	40
Codabar.....	41
Codablock A.....	41
Codablock F.....	41
Code 11	41
Code 39	41
Code 93/93i	41
Code 128/EAN 128	42
ISBT 128.....	42
GTIN Processing for EAN 128.....	42
Configuration Modes and Utilities	43
Consecutive Same Read Data Validation	43
Data Editing	43
Disable All Symbologies	43
EAN.UCC Composite	44
Error Beep.....	44
Good Read Beep Duration.....	44
Good Read Beep Number.....	44
Good Read Beep Timing.....	44
Good Read LED Duration	44
Interleaved 2 of 5	45
Matrix 2 of 5.....	45
Micro PDF417.....	45
MSI.....	45
PDF417	45
Plessey	46
Postamble.....	46
Preamble.....	46
RSS 14.....	46
RSS Expanded.....	46
RSS Limited	47
Setup Beep	47
Stacked Code Crackle	47
Standard 2 of 5	47
Symbology Identifier	47
Telepen	48
Timeout Between Different Consecutive Codes ...	48
Timeout Between Identical Consecutive Codes ...	48
TLC 39.....	49

Contents

Trigger Mode 49
Trigger Timeout 50
Turn Off After Good Read 50
UPC/EAN 51
 ISBN 51
 GTIN Processing 51
User Reset Factory Defaults 51
Vibrate Alert 52
Vibrate Alert Duration 52

A Appendix 53

Specifications 54

Accessories for the SF51 56

I Index 59

Before You Begin

This section provides you with safety information, technical support information, and sources for additional product information.

Safety Information

Your safety is extremely important. Read and follow all warnings and cautions in this document before handling and operating Intermec equipment. You can be seriously injured, and equipment and data can be damaged if you do not follow the safety warnings and cautions.

This section explains how to identify and understand warnings, cautions, and notes that are in this document.



A warning alerts you of an operating procedure, practice, condition, or statement that must be strictly observed to avoid death or serious injury to the persons working on the equipment.



A caution alerts you to an operating procedure, practice, condition, or statement that must be strictly observed to prevent equipment damage or destruction, or corruption or loss of data.



Note: Notes either provide extra information about a topic or contain special instructions for handling a particular condition or set of circumstances.

Before You Begin

Global Services and Support

Warranty Information

To understand the warranty for your Intermec product, visit the Intermec web site at www.intermec.com and click **Support > Returns and Repairs > Warranty**.

Disclaimer of warranties: The sample code included in this document is presented for reference only. The code does not necessarily represent complete, tested programs. The code is provided “as is with all faults.” All warranties are expressly disclaimed, including the implied warranties of merchantability and fitness for a particular purpose.

Web Support

Visit the Intermec web site at www.intermec.com to download our current manuals (in PDF). To order printed versions of the Intermec manuals, contact your local Intermec representative or distributor.

Visit the Intermec technical knowledge base (Knowledge Central) at www.intermec.com and click **Support > Knowledge Central** to review technical information or to request technical support for your Intermec product.

Telephone Support

In the U.S.A. and Canada, call **1-800-755-5505**.

Outside the U.S.A. and Canada, contact your local Intermec representative. To search for your local representative, from the Intermec web site, click **About Us > Contact Us**.

Service Location Support

For the most current listing of service locations, click **Support > Returns and Repairs > Repair Locations**.

For technical support in South Korea, use the after service locations listed below:

Awoo Systems

102-1304 SK Ventium

522 Dangjung-dong

Gunpo-si, Gyeonggi-do Korea, South 435-776

Contact: Mr. Sinbum Kang

Telephone: +82-31-436-1191

E-mail: mjyun@awoo.co.kr

Before You Begin

IN Information System PTD LTD

6th Floor

Daegu Venture Center Bldg 95

Shinchun 3 Dong

Donggu, Daegu City, Korea

E-mail: jmyou@idif.co.kr or korlim@gw.idif.co.kr

Who Should Read This Manual

The *SF51 Cordless Scanner User's Guide* provides you with information about the features of the SF51. This guide is written for the person who is responsible for installing, configuring, maintaining, and troubleshooting the SF51.

Before you configure the SF51, you should be familiar with your network and general networking terms, such as IP address. You should also have a working knowledge of Bluetooth communications.

Related Documents

The Intermec web site at www.intermec.com contains our documents (as PDF files) that you can download for free.

To download documents

- 1 Visit the Intermec web site at www.intermec.com.
- 2 Click **Support > Manuals**.
- 3 In the **Select a Product** field, choose the product whose documentation you want to download.

To order printed versions of the Intermec manuals, contact your local Intermec representative or distributor.

Patent Information

Product is covered by one or more of the following patents:

4,766,300; 5,548,108; 5,912,452; 4,882,476; 5,550,362; 5,923,022;
4,894,523; 5,550,364; 5,936,224; 4,953,113; 5,565,669; 5,949,056;
4,970,379; 5,572,007; 5,969,321; 4,988,852; 5,576,529; 5,969,326;
5,019,699; 5,594,230; 5,979,768; 5,021,642; 5,598,007; 5,987,192;
5,038,024; 5,608,578; 5,992,750; 5,081,343; 5,616,909; 6,003,775;
5,095,197; 5,619,027; 6,012,640; 5,144,119; 5,640,001; 6,016,960;
5,144,121; 5,659,431; 6,018,597; 5,182,441; 5,672,860; 6,024,289;
5,187,355; 5,684,290; 6,034,379; 5,187,356; 5,719,678; 6,036,093;
5,216,233; 5,729,003; 6,039,252; 5,216,550; 5,742,041; 6,064,763;

Before You Begin

5,218,191; 5,761,219; 6,095,422; 5,233,172; 5,764,798; 6,097,839;
5,241,488; 5,777,308; 6,102,289; 5,243,602; 5,777,309; 6,102,295;
5,258,606; 5,777,310; 6,119,941; 5,288,985; 5,786,583; 6,128,414;
5,308,966; 5,798,509; 6,138,915; 5,342,210; 5,798,513; 6,149,061;
5,359,185; 5,804,805; 6,149,063; 5,389,770; 5,811,776; 6,152,370;
5,397,885; 5,811,777; 6,155,490; 5,414,251; 5,818,027; 6,158,661;
5,416,463; 5,821,523; 6,164,542; 5,442,167; 5,834,749; 6,164,545;
5,464,972; 5,837,987; 6,173,893; 5,468,947; 5,841,121; 6,195,053;
5,468,950; 5,842,070; 6,234,393; 5,477,044; 5,854,478; 6,234,395;
5,486,689; 5,862,267; 6,249,008; 5,500,516; 5,869,840; 6,328,214;
5,502,297; 5,873,070; 6,330,975; 5,504,367; 5,877,486; 6,345,765;
5,514,858; 5,878,395; 6,356,949; 5,534,684; 5,886,338; 6,367,699;
5,536,924; 5,895,906; 6,375,075; 5,539,191; 5,902,987; 6,375,076;
5,541,419; 5,902,988; 6,435,411.

There may be other U.S. and foreign patents pending.

1

Learning About the SF51

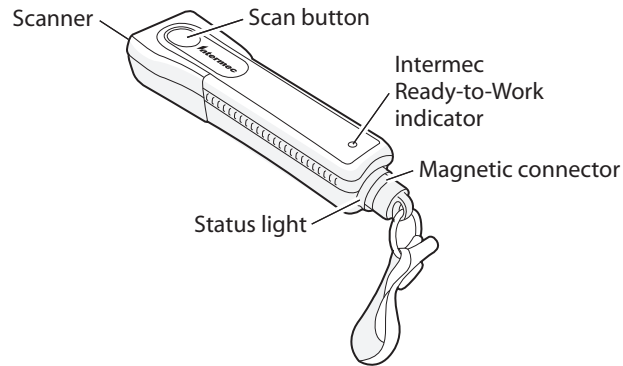
Use this chapter to familiarize yourself with the SF51 Cordless Scanner. This chapter covers these topics:

- **Introducing the SF51 Cordless Scanner**
- **What's New?**
- **Using the Battery**
- **How to Turn On the SF51**
- **Understanding the Lights**
- **Understanding the Beeps**
- **Scanning Bar Codes**
- **Using Vibrate Alert**

Introducing the SF51 Cordless Scanner

The SF51 Cordless Scanner is a small, rugged handheld scanner. It is a lightweight, ergonomically designed scanner that uses a Bluetooth™ radio for RF communications.

The SF51 includes these features:



SF51 Cordless Scanner



This device contains permanent magnets that can generate magnetic fields of greater than 10 gauss. Caution should be used by anyone with a Pacemaker, Implantable Cardioverter Defibrillator (ICD), or Heart Failure Device. Check with your doctor for detailed information before using this device.

What's New?

This revision of the user's guide includes corrections to the firmware upgrade procedure.

Using the Battery

The SF51 uses a lithium-ion battery as its main power source. You need to fully charge the battery before you can use the SF51.



The lithium-ion battery pack that is used in this device may present a fire or chemical burn hazard if it is mistreated. Do not disassemble it, heat it above 100°C (212°F) or incinerate it.

Charging the Battery

Make sure you fully charge the battery before you start using the SF51.

To charge the battery

- Place the SF51 in the 1-bay charger (Model 074645) or the 4-bay charger (Model 074646). A fully discharged battery charges to 100% capacity in approximately 3 hours.

It may take longer than 3 hours to charge the battery if the temperature is near the minimum (0°C, 32°F) or maximum (35°C, 95°F) charging temperature.



Note: When you place the SF51 in the 1-bay or 4-bay charger, you reset the SF51 scanner control firmware. For more information, see [“Resetting the SF51” on page 31](#).

Checking the Battery Status

- Press the **Scan** button.

If the status light on the SF51 turns red, the battery is low (less than 20% battery capacity remaining). You need to charge the battery now.

How to Turn On the SF51

You use the **Scan** button to turn on the SF51.

To turn on the SF51

- Press the **Scan** button.

The first time you press the **Scan** button to turn on the SF51, it enters a discoverable state so that your host Bluetooth device can perform a device discovery and establish a Bluetooth connection.

If the status light on the SF51 turns red when you try to turn on the scanner, you need to charge the battery. For help, see [“Charging the Battery” on page 3](#).

To turn off the SF51

- Scan this bar code:

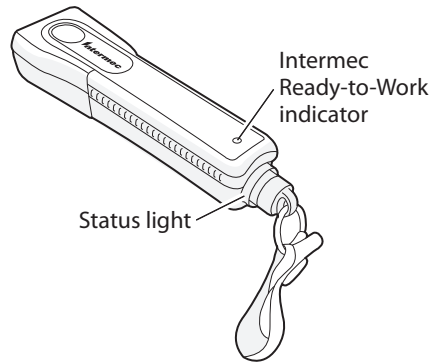
Scanner Power Down



\60\08\2A\46

Understanding the Lights

The lights on the SF51 turn on to indicate the status of the battery, a successful decode of a bar code, or the status of the Bluetooth connection.



SF51 Lights: The status light turns green or red to indicate the status of the battery and scanning. The blue Intermec Ready-to-Work™ indicator turns on to let you know that the SF51 is ready to send data to your host Bluetooth device.

Understanding the Status Lights

Light State	What It Means
Blinks green one time	The SF51 successfully decoded a bar code and sent the data to the host. The SF51 successfully scanned a configuration bar code.
Flashes red when you press the Scan button	The battery is low. You need to place the SF51 in the 1-bay or 4-bay charger.
Flashes red and stays on for 2 seconds	You scanned a bar code, but the data was not sent to the host. You scanned a configuration bar code and the SF51 did not accept it.
Off	A Bluetooth connection to the host computer is not established.
Blinking	The SF51 is trying to establish a Bluetooth connection with the host computer, or the SF51 is moving out of range of the host computer.

Chapter 1 – Learning About the SF51

Understanding the Status Lights (continued)

Light State	What It Means
On	A Bluetooth connection with the host computer has been established. The SF51 is ready to scan bar codes and send data to the host computer.



Note: When the SF51 is in the 1-bay or 4-bay charger, the status light indicates the battery charging status. For more information, see the instructions that ship with the charger.

Understanding the Beeps

The SF51 uses beeps to give you audio feedback when it performs some functions. For example, you hear a beep each time you scan a valid bar code.

Understanding the Beep Sequences

Beep Sequence	What It Means
Single beep	The SF51 successfully decoded a bar code or scanned a configuration bar code.
Series of beeps from low to high	The SF51 connected to a Bluetooth host.
Series of beeps from high to low	A Bluetooth connection has been lost.
Three beeps	Data was not successfully sent to the host. The SF51 is out of range of the host. A configuration bar code was not successfully scanned.
Continuous beeping for 1 minute	The host PC is paging the SF51. After you find the SF51, press the Scan button to stop the beeps. For more information about paging the SF51, see “Paging the SF51” on page 30 .

You can change the beep volume for your needs and environment. You can set the beep volume to Low (quiet), Medium (loud), and High (very loud - default).



Note: To turn off the beeper, you set the Beep Duration to 0. Turning off the beeper does not affect the beeps associated with Bluetooth Connect/Disconnect or Bluetooth Device Page.

You can also change the beeper duration and beeper frequency. For more information about the beeper commands, see Chapter 4, “[Configuration Command Reference](#).”

Scanning Bar Codes

The SF51 has a linear imager you can use to scan and enter bar code data. The linear imager can decode 1D and 2D stacked bar codes. When you unpack the SF51, these bar code symbologies are enabled:

- Code 39
- Code 128/EAN 128
- PDF417 (only available on the SF51 with PDF version)
- UPC/EAN

If you are using bar code labels that are encoded in a different symbology, you need to enable the symbology on the SF51. Use EasySet version 5.4 or later to enable and disable symbologies for your scanner. You can download it at no charge from the Intermec web site at www.intermec.com/EasySet.

To scan a bar code label

- 1** Establish a Bluetooth connection between the SF51 and your host device. For more information about establishing a Bluetooth connection, see “[Connecting the SF51 to a Host Device](#)” on page 12.
- 2** Point the SF51 at the bar code label and hold the SF51 at a slight angle 15 to 25 cm (6 to 10 in) from the label.
- 3** Press the **Scan** button. The scanner beam turns on. Scan this test bar code:

Code 39 Test Bar Code

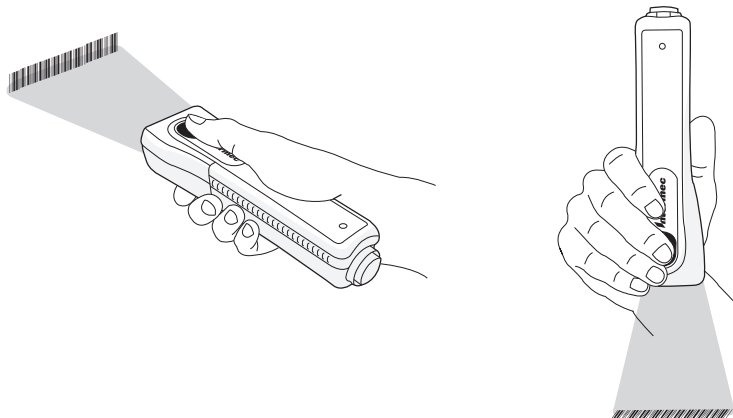


123456

Tip: Depending on your screen resolution, you may be able to scan bar codes displayed on your computer screen.

Chapter 1 – Learning About the SF51

- 4 If you are scanning a 1D bar code, direct the red scanner beam so that it falls across all bars in the bar code label.
If you are scanning a 2D bar code, pass the beam over the bar code label in a steady sweeping motion. The scanner emits a crackle sound.



Scanning With the SF51: There are two different ways to comfortably hold the SF51.

When the SF51 successfully reads a bar code label, you hear a single beep and the status light briefly turns green. If Vibrate Alert is enabled, the SF51 briefly vibrates.

- 5 Release the **Scan** button.

Using Vibrate Alert

You can configure the SF51 to vibrate when a bar code is successfully decoded. This feature can be useful in these situations:

- You are in a noisy environment, such as a busy warehouse, where it can be difficult to hear the beep.
- You are working in a quiet environment, such as a library, where you do not want to make a lot of noise.

Chapter 1 – Learning About the SF51

To turn on vibrate alert

- Scan this bar code:

Turn On Vibrate Alert



\60\03\10\48\00\02\40

To turn off vibrate alert

- Scan this bar code:

Turn Off Vibrate Alert



\60\03\10\48\00\00\00

Chapter 1 – Learning About the SF51

2

Connecting and Configuring the SF51

Use this chapter to understand how to configure the SF51 to communicate with your application. This chapter covers these topics:

- **Connecting the SF51 to a Host Device**
- **Configuring the SF51 Parameters**
- **Configuring Bluetooth Communications**

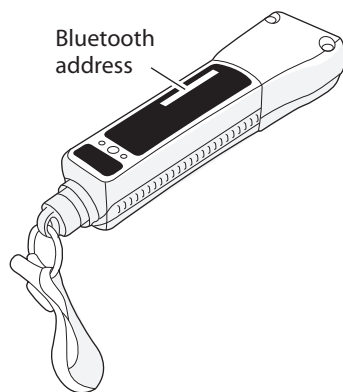
Connecting the SF51 to a Host Device

You can use Bluetooth radio communications to connect the SF51 to these host devices:

- Intermec computer with a Bluetooth radio, such as the 700 Color Series (with Windows Mobile 2003 or later), CK30, CK32, CN3, CK3, CK60, CV30, and CV60.
- PC with a USB Bluetooth adapter (P/N 203-771-xxx) or RS-232 Bluetooth adapter (P/N 203-768-xxx).
- Other devices with a Bluetooth radio that support a Serial Port Profile (SPP). For help, see the documentation for your device.

Before connecting the SF51 to a host device, note the Bluetooth address for the:

- host Bluetooth device.
- SF51.



SF51 Bluetooth Address: The SF51 Bluetooth address is located in the upper right corner of the label on the back of the SF51.

Connecting to an Intermec Computer



Note: When you connect to an Intermec computer, all SF51 settings that are common to the Intermec computer's internal scanner settings are changed to the default settings of the internal scanner.

To connect to an Intermec computer

- 1 Install EasySet version 5.4 or later on a host PC. EasySet is available on the Intermec web site at www.intermec.com/EasySet.
- 2 Start EasySet. Make sure that SF51 is selected as your product.
- 3 From the EasySet commands window, select **Data transmission settings > Bluetooth parameters > connect/disconnect**.
- 4 Double-click **compose BT address**.
- 5 Enter the Bluetooth address of your Intermec computer and click OK. The bar code appears on the setup sheet.
- 6 Scan the bar code onscreen with the SF51, or print the bar code setup sheet and scan the bar code.

The SF51 beeps once, the green status light flashes once, and the blue Intermec Ready-to-Work indicator starts blinking. On your Intermec computer, the Authen. Request dialog box appears.

- 7 In the **Enter PIN** field, enter the default PIN (0000) and select **OK**.

When the SF51 connects to your Intermec computer, the SF51 emits a series of beeps from low to high, and the blue Intermec Ready-to-Work indicator turns on and stays on. The SF51 is ready to scan data.



Note: To connect more than one SF51 to your Intermec computer, use the Bluetooth Device Utility on the Intermec computer. For help, see the documentation for your Intermec computer.

Connecting to a Host PC With the Bluetooth Adapter

To connect using a Bluetooth adapter

- 1 Install the USB Bluetooth adapter (P/N 203-771-xxx) or RS-232 Bluetooth adapter (P/N 203-768-xxx) and software on your host PC.
- 2 Connect and pair your SF51 with your host PC.

For help, see the instructions that ship with the adapter.

To disconnect from a host PC

- Scan this bar code:

Bluetooth Device Disconnect



\60\02\52\05\00\00\06\00\00\00\00\00\00\00\00\00

The SF51 disconnects from your host PC, emits a series of beeps from high to low, and the blue Intermec Ready-to-Work indicator turns off.

Tip: Depending on your screen resolution, you may be able to scan bar codes displayed on your computer screen.

Connecting as a Keyboard Wedge

You can connect your SF51 to your host PC as a keyboard wedge. Connecting as a keyboard wedge lets your host PC receive data from the SF51 as it would from a keyboard. You can use one of these applications:

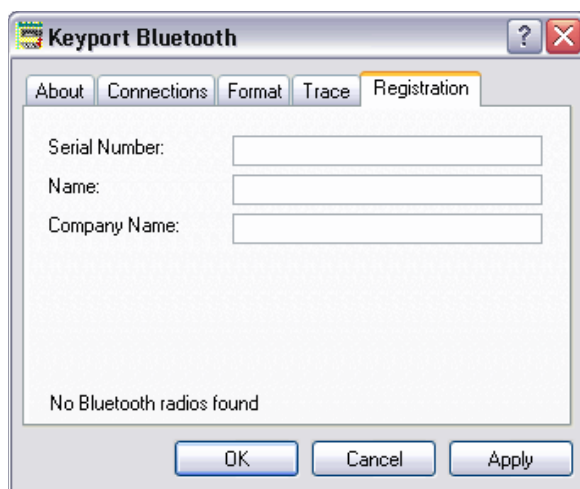
- Keyport™ Bluetooth is a keyboard wedge application that allows your host PC application to receive data directly from the SF51. Keyport Bluetooth runs on Windows XP with SP2.
- Keyport Lite is a keyboard wedge application that supports English QWERTY keyboards. Keyport Lite runs on Windows 2000 and Windows XP with SP1.

This section describes how to connect using Keyport Bluetooth and Keyport Lite. For more information about these applications, see the documentation that ships with each product.

Connecting Using Keyport Bluetooth

To connect using Keyport Bluetooth

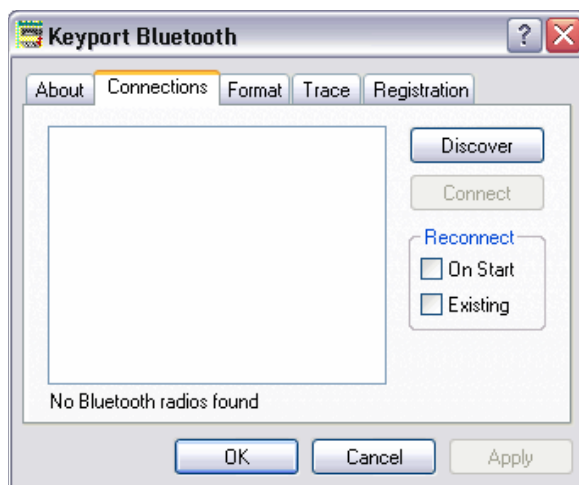
- 1 Connect your SF51 to your host PC running Windows XP with SP2 or later. For help, see the previous section, [“Connecting to a Host PC With the Bluetooth Adapter.”](#)
- 2 Install Keyport Bluetooth on your PC.
- 3 Start Keyport Bluetooth.
- 4 Click the **Registration** tab.



- 5 Fill in the registration information, and then click **Apply**.

Chapter 2 – Connecting and Configuring the SF51

- 6 Click the **Connections** tab.



- 7 Make sure that your SF51 is on and discoverable, and then click **Discover**. Keyport Bluetooth searches for Bluetooth devices.
- 8 From the list, select your SF51 and click **Connect**.
- 9 Keyport Bluetooth connects to your SF51 as a keyboard wedge.
- 10 Click **OK**.

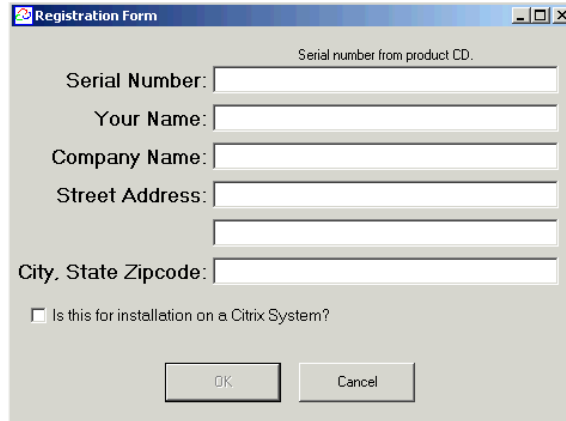
Connecting Using Keyport Lite

To connect using Keyport Lite

- 1 Connect your SF51 to your host PC. For help, see [“Connecting to a Host PC With the Bluetooth Adapter” on page 14](#).
- 2 Install Keyport Lite on your PC.

Chapter 2 – Connecting and Configuring the SF51

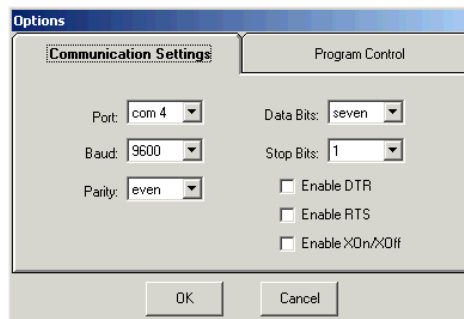
- 3 Start Keyport Lite. From the **Window** menu, select **Change Registration**. The Registration Form appears.



The Registration Form dialog box contains the following fields and options:

- Serial Number: [Text box] (with a small note above: Serial number from product CD.)
- Your Name: [Text box]
- Company Name: [Text box]
- Street Address: [Text box]
- [Text box]
- City, State Zipcode: [Text box]
- Is this for installation on a Citrix System?
- OK button
- Cancel button

- 4 Fill in the information on the Registration Form, and click **OK**.
- 5 From the **Window** menu, select **Options**. The Options window appears.



The Options dialog box has two tabs: **Communication Settings** and **Program Control**. The Communication Settings tab is active and contains the following fields and options:

- Port: [Dropdown menu] (set to com 4)
- Baud: [Dropdown menu] (set to 9600)
- Parity: [Dropdown menu] (set to even)
- Data Bits: [Dropdown menu] (set to seven)
- Stop Bits: [Dropdown menu] (set to 1)
- Enable DTR
- Enable RTS
- Enable XOn/XOff
- OK button
- Cancel button

- 6 In the **Port** field, select the COM port being used for Bluetooth communications, and click **OK**.



Note: You can use either the incoming or outgoing COM port.

- 7 Click the Start button. Your SF51 is connected to your host PC as a keyboard wedge.

Collecting Data With Your SF51

After you connect your SF51 to your host device, you are ready to start collecting data. The method you use depends on whether you are using:

- an Intermec computer.
- a host PC.
- the SF51 as a keyboard wedge.

To collect data with your SF51

- 1** Establish a Bluetooth connection.
- 2** Start your data collection application.
- 3** (Host PC only) Configure your data collection application to receive data from the incoming or outgoing COM port.
- 4** Scan a bar code with your SF51. The data is entered into your application.

For more information, see [“Connecting the SF51 to a Host Device” on page 12](#).

Configuring the SF51 Parameters

You can configure many parameters on the SF51, such as the bar code symbologies it decodes or the volume of the beeper. These characteristics are controlled by configuration commands. The values you set for these configuration commands determine how the scanner operates.

You can configure the SF51:

- using EasySet version 5.4 or later.
- remotely from your Intermec computer.

Configuring the SF51 With EasySet

EasySet is an Intermec configuration application that provides you with two ways to configure the SF51:

- Send configuration commands directly to the SF51.
- Send configuration commands to a bar code setup sheet. You can scan the bar codes onscreen with your SF51 or print the setup sheet and scan the bar codes. You do not need a Bluetooth connection to use this method.

Chapter 2 – Connecting and Configuring the SF51

For more information about EasySet, see the EasySet software. For descriptions of the configuration commands, see Chapter 4, “[Configuration Command Reference](#).”

To configure the SF51 by sending commands from EasySet

- 1 Establish a Bluetooth connection with your host PC.
- 2 Start EasySet version 5.4 or later. The first time you start EasySet, the Select product dialog box appears.
If the Select product dialog box does not appear, choose **Product > Select**.
- 3 Select the SF51.
- 4 Select the **Online Setup** check box, and click **OK**. The Online Setup dialog box appears.
- 5 Select the COM port that your SF51 is using for Bluetooth communications, and click **OK**.
EasySet connects to your SF51 and retrieves the current configuration of the SF51.
- 6 In the Commands window, choose configuration command settings for your SF51.

Your SF51 is updated with the new configuration command settings, and the settings are added to the bar code setup sheet.



Note: The SF51 does not beep when you send configuration commands online from EasySet.

To configure the SF51 by scanning bar codes

- 1 Start EasySet version 5.4 or later. The first time you start EasySet, the Select product dialog box appears.
If the Select product dialog box does not appear, choose **Product > Select**.
- 2 Select the SF51, and click **OK**.
- 3 In the Commands window, choose configuration command settings for your SF51 and add them to the bar code setup sheet.
- 4 Scan the bar codes onscreen with your SF51, or print the setup sheet and scan the commands. When you scan bar code configuration commands, the SF51 emits a series of beeps unless the volume is turned off.

Chapter 2 – Connecting and Configuring the SF51

- One beep means you scanned a valid configuration command.
- Three beeps means you scanned an invalid configuration command.

Configuring the SF51 From Your Intermec Computer

You can configure many settings for the SF51 from your Intermec computer. For descriptions of the configuration commands, see Chapter 4, “[Configuration Command Reference](#).”



Note: When you connect to an Intermec computer, all SF51 settings that are common to the Intermec computer’s internal scanner settings are changed to the default settings of the internal scanner.

To configure the SF51 from your Intermec computer

- 1 Establish a Bluetooth connection with your Intermec computer. For help, see “[Connecting to an Intermec Computer](#)” on page 13.
- 2 On your Intermec computer, start the Intermec Settings application.
- 3 Select **Data Collection** > **SF51 Scanner Bluetooth Address**, where *Bluetooth Address* is the Bluetooth address of your SF51.
- 4 Configure commands from the SF51 Scanner menu for your SF51.
- 5 Select **File** > **Save Settings**. The SF51 is updated with the new configuration command settings.
- 6 Close Intermec Settings.

Restoring Default Settings

You can restore the SF51 to its default settings by scanning the Administrator Reset Factory Defaults command. For a list of the default settings, see “[Configuration Commands By Function](#)” on page 35.



Note: Using the Administrator Reset Factory Defaults command resets all parameters. As a result, you will lose Bluetooth communications.

To restore default settings

- Scan this bar code:

Administrator Reset Factory Defaults



\60\08\55\22

Configuring Bluetooth Communications

The SF51 can communicate with a host device through the Serial Port Profile (SPP) Bluetooth communications profile.

SPP allows the SF51 to use the Bluetooth link as a serial port to communicate with the host device. You can send information from the SF51 to your serial application without having to modify your application.

You can initiate a Bluetooth connection from either your SF51 or host device:

- If you initiate the connection from your SF51, you can only connect one SF51 to your host device. When you reset the SF51 by placing it in a charger, the SF51 automatically reestablishes the Bluetooth connection.
- If you initiate the connection from a host device, you can connect more than one SF51 to the same host device. When you reset the SF51 by placing it in a charger, you need to reestablish the Bluetooth connection from your host device.

Configuring Security

The SF51 provides Bluetooth wireless security for transmitting data. By default, security is active on your SF51. For maximum security, you need to configure a Bluetooth PIN (personal identification number).

This section assumes that you have already installed EasySet version 5.4 or later.

Chapter 2 – Connecting and Configuring the SF51

To configure a Bluetooth PIN for your SF51

- 1 Start EasySet version 5.4 or later.
- 2 Select the SF51, and click **OK**.
- 3 In the Commands window, select **Data transmission settings > Bluetooth parameters > security**.
- 4 Select **active**.
- 5 Select **compose PIN** and create a Bluetooth PIN that is up to 16 characters in length. The default Bluetooth PIN is 0000.
- 6 Scan both commands onscreen with your SF51, or print the bar code setup sheet and scan both commands.



Note: For security reasons, you can only change the Bluetooth PIN by scanning a bar code.

Configuring the Discoverable State of the SF51

By default, the SF51 is always discoverable. For enhanced security, you should configure your SF51 for limited discoverability, which allows the SF51 to be discoverable by Bluetooth management applications for only 30 seconds. For more information, see [“Bluetooth Discoverable” on page 39](#).

To configure your SF51 for limited discoverability

- Scan this bar code:

Bluetooth parameters - discoverable - limited



\60\02\50\41\00\02\40

The SF51 is discoverable for 30 seconds.

3

Troubleshooting and Maintaining the SF51

Use this chapter to solve problems you may have while using the SF51. This chapter contains these topics:

- **Troubleshooting the SF51**
- **Upgrading the SF51**
- **Paging the SF51**
- **Resetting the SF51**
- **Cleaning the SF51**

Troubleshooting the SF51

Use this chapter to troubleshoot some common problems you may experience with your SF51. If you cannot find the answer to your problem in the “Problems and Solutions” section on [page 29](#), you may need to call Product Support.

Calling Product Support

To talk to an Intermec Product Support representative, call:

1-800-755-5505

Before you call Intermec Product Support, make sure you have the following information ready:

- Product version
- Sub-system versions
- Bluetooth address of your SF51

To get the product version, sub-system versions, or Bluetooth address

- 1** If necessary, install the USB Bluetooth adapter (P/N 203-771-xxx) or RS-232 Bluetooth adapter (P/N 203-768-xxx) and create a Bluetooth connection between your SF51 and your PC. For help, see the instructions that ship with the adapter.
- 2** Run an application that can accept bar code information from the SF51, such as HyperTerminal.
- 3** Scan these bar codes:

Get Product Version



\60\0F\37\20

Get Sub-System Versions



\60\0F\37\24

Get SF51 Bluetooth Device Address




Tip: Depending on your screen resolution, you may be able to scan bar codes displayed on your computer screen.



Problems and Possible Solutions

Use this section to find problems and possible solutions.

Troubleshooting the SF51

Problem	Possible Solution
Your SF51 has been misplaced, and you cannot find it.	If your SF51 is within Bluetooth communication range of your host PC, you can send the Bluetooth Device Page command from EasySet to locate your SF51. For help, see “Paging the SF51” on page 30 .
You place the SF51 in a charger and lose Bluetooth communications.	When you place the SF51 in a 1-bay or 4-bay charger, you reset the SF51, and the scanner control firmware restarts. If you have a Bluetooth connection, the SF51 disconnects from the host device while the firmware resets. For more information, see “Resetting the SF51” on page 31 .
You cannot establish a Bluetooth connection (the blue Intermec Ready-to-Work indicator is not on).	Scan the following bar code to reset the scanner to its default configuration and try establishing a connection again. Using the Administrator Reset Factory Defaults command resets all settings. As a result, you will lose Bluetooth communications. Administrator Reset Factory Defaults  \60\08\55\22

Troubleshooting the SF51 (continued)

Problem	Possible Solution
<p>You are trying to establish a Bluetooth connection from a host device to your SF51, but the host device cannot find your SF51.</p>	<p>The SF51 may not be in a discoverable state. For help, see “Bluetooth Discoverable” on page 39.</p> <p>The SF51 may be connected and paired to another Bluetooth device. Scan the following bar code to reset the SF51 to its default settings and disconnect Bluetooth communications. Try establishing a connection again.</p> <p>Using the Administrator Reset Factory Defaults command resets all settings. As a result, you will lose Bluetooth communications.</p> <p>Administrator Reset Factory Defaults</p>  <p>\60\08\55\22</p>
<p>When you press the Scan button, the red scanner beam does not turn on.</p>	<p>The battery is low. Charge the battery immediately and try scanning again.</p>
<p>You changed the Bluetooth PIN from its default value of 0000, but you forgot your new PIN number.</p>	<p>Scan this bar code to reset the scanner to its default configuration and default Bluetooth PIN of 0000.</p> <p>Administrator Reset Factory Defaults</p>  <p>\60\08\55\22</p>
<p>You established a Bluetooth connection with an Intermec computer, and the settings on your SF51 were restored to their default values.</p>	<p>When you connect to an Intermec computer, all SF51 settings that are common to the Intermec computer’s internal scanner settings are changed to the default settings of the internal scanner. Scan configuration bar codes, or use Intermec Settings on your Intermec computer to change your SF51 settings.</p>

Troubleshooting the SF51 (continued)

Problem	Possible Solution
You press the Scan button to scan a data bar code, the SF51 does not beep, and the scanner beam starts blinking.	The data may still be in the process of being sent to the host. Data transmission may be slow if there is interference with Bluetooth communications, or if the SF51 is too far from the host device. If you are using Level Trigger Mode, the scanner beam blinks while the SF51 is waiting. For more information, see “Trigger Mode” on page 49 .
You scan a bar code, the Status light flashes red for two seconds, and the scanner beeps three times.	The SF51 may not be connected to a host. Make sure the blue Intermec Ready-to-Work indicator is on and the SF51 is connected to your host device. For help, see “Connecting the SF51 to a Host Device” on page 12 .
You are using the SF51 in keyboard wedge mode, and when you try to scan a bar code, and nothing happens.	<p>Try these possible solutions:</p> <ul style="list-style-type: none"> • Make sure that your data collection application is open and running. • Make sure that you pressed the Keyport Lite Start button. <p>For help, see “Connecting as a Keyboard Wedge” on page 14.</p>

Upgrading the SF51

When you upgrade your SF51, you update the SF51 processor firmware. The current settings are erased and replaced with the default settings for the SF51. You need to reestablish Bluetooth communications between your SF51 and other Bluetooth devices and applications in your data collection system.

To upgrade the SF51, you need these items:

- SF51 firmware upgrade package:
 - SF51Upgrade.exe (SF51 Firmware Upgrade Utility)
 - SF51_XX_XX.ldr (firmware upgrade file)
 - readme.txt (upgrade instructions)
- USB Bluetooth adapter (P/N 203-771-xxx) or RS-232 Bluetooth adapter (P/N 203-768-xxx)

Chapter 3 – Troubleshooting and Maintaining the SF51

- PC running Microsoft Windows 2000/XP with SP1 or SP2

Before upgrading the SF51, you should fully charge the SF51 battery. For help, see **“Charging the Battery” on page 3.**

To upgrade the SF51

- 1 Download the latest upgrade package from the Intermec web site at www.intermec.com.
 - a Go to **Support > Downloads > Search Product and Software Downloads.**
 - b From the **Select A Product** drop-down list, choose **Bar Code Scanners: SF51 Cordless Scanner.**
 - c Click the link to download the upgrade package, and save it to your PC.
- 2 Remove the SF51 from the charger.
- 3 If necessary, install the USB or RS-232 Bluetooth adapter and create a Bluetooth connection between your SF51 and your PC. For help, see the instructions that ship with the adapter.

Note: Make sure that all applications on your PC are closed.



- 4 Start the SF51 Firmware Upgrade Utility.
- 5 Scan the bar code to reset to factory defaults and click **Next**. See **“To restore default settings” on page 21** for the reset factory defaults bar code.
- 6 Click **Browse** to browse to the location of the firmware (.ldr) file.
- 7 Select the firmware file and click **Open**.
- 8 Enter the Bluetooth Address of the SF51 to be upgraded and click **Next**.
- 9 The Status Bar appears and the upgrade utility loads the latest firmware on your SF51.

Note: Do not place the SF51 in the 1-bay or 4-bay charger during the firmware upgrade, because the SF51 may lock up.



The upgrade utility notifies you when the upgrade is complete.

Troubleshooting the Firmware Upgrade

If the SF51 locks up during the upgrade procedure and does not respond when you press the **Scan** button or place it in a charger, you may still be able to connect to it from your PC and upgrade the firmware.

To troubleshoot a locked up SF51

- 1 Make sure that the SF51 is not seated in the 1-bay or 4-bay charger.
- 2 From your PC, use the Bluetooth application to search for Bluetooth devices.
- 3 If your SF51 appears in the list, connect to it from the Bluetooth application.

If your SF51 does not appear in the list, contact Intermec Support Services at **1-800-755-5505**.

- 4 When the Bluetooth PIN Code Request box appears, enter the following case-sensitive PIN in the Bluetooth PIN Code field, and click **OK**:

zxcvasdfqwer

The Bluetooth application connects to the boot loader code on your SF51. “Intermec SF51 Boot Server” may appear in the **Device Name** list instead of the name of your SF51 scanner.

- 5 Use your Bluetooth application to connect to the Intermec SF51 Boot Server.
- 6 Start the SF51 Firmware Upgrade Utility.
- 7 Click **Browse** to browse to the location of the firmware (.ldr) file. Select the firmware file and click **Open**.
- 8 From the **COM Port** drop-down list box, select the COM port that the Intermec SF51 Boot Server is using for Bluetooth communications.
- 9 Click **Next**. The Bluetooth address of your SF51 appears, the status bar appears, and the upgrade utility upgrades your SF51 with the latest firmware.



Note: The next time you connect to your PC, your SF51 device name may be “Intermec SF51 Boot Server.” When the Bluetooth PIN Code Request box appears, enter the default PIN, which is 0000. After you connect, the name and Bluetooth address of your SF51 should appear in your Bluetooth application.

Paging the SF51

If your SF51 is within Bluetooth communication range of your host PC, you can send the Bluetooth Device Page command from EasySet to locate the SF51.



Note: If the SF51 is turned off, your host PC cannot connect to it and send the Bluetooth Device Page command.

To page the SF51

- 1** Start EasySet version 5.4 or later. Make sure that SF51 is selected as your product.
- 2** Select **Communication** > **Connect**.
- 3** Select the appropriate COM port, and click **OK**.
- 4** Select the **Send to product** check box below the commands window.
- 5** In the EasySet Commands window, select **Configuration modes and utilities** > **Bluetooth device page**.

The SF51 beeps continuously for 1 minute or until you find the SF51 and press the **Scan** button.

Resetting the SF51

If the SF51 appears to be locked up, you can reset it. When you reset the SF51, the scanner control firmware is restarted.

To reset the SF51

- Place the SF51 in the 1-bay or 4-bay charger.

If you have a Bluetooth connection, the SF51 disconnects from the host device.

When you reset the SF51:

- The SF51 tries to reestablish a Bluetooth connection with the host device if the SF51 initiated the Bluetooth connection.
- The SF51 turns on and enters a discoverable state if the host device initiated the Bluetooth connection. You need to reestablish the Bluetooth connection from the host device.

Cleaning the SF51

To keep the SF51 in good working order, you may need to clean the scanner window. Clean the scanner window as often as needed for the environment in which you are using the SF51. To clean the scanner window, you can use soapy water, a solution of ammonia and water, or isopropyl alcohol.



Opening the SF51 will void the warranty and may cause damage to the internal components.

To clean the scanner window

- 1 Dip a clean towel or rag in soapy water, ammonia and water solution, or isopropyl alcohol and wring out the excess. Wipe the scanner window. Do not allow any abrasive material to touch the window.
- 2 Wipe dry with a lint-free cloth.

4 Configuration Command Reference

Use this chapter to learn about the commands supported on the SF51. This chapter contains these topics:

- [Using Configuration Commands](#)
- [Configuration Commands By Function](#)
- [SF51 Configuration Commands](#)

Using Configuration Commands

A configuration command changes the way the SF51 operates. For example, you can change the Beep Volume and make the SF51 beeper very quiet for a quiet environment.

You can configure the SF51:

- by sending commands to your SF51 from your PC using EasySet. For help, see **“To configure the SF51 by sending commands from EasySet” on page 19.**
- by sending commands to a bar code setup sheet. Then, scan the bar codes onscreen with your SF51, or print the setup sheet and scan the bar codes. You do not need a Bluetooth connection to use this method. For help, see **“To configure the SF51 by scanning bar codes” on page 19.**
- from your Intermec computer. Send commands to your SF51 from your Intermec computer using Intermec Settings. For help, see the procedure **“To configure the SF51 from your Intermec computer” on page 20.**

For a list of all the commands and their default values as they are organized in EasySet, see the next section, **“Configuration Commands By Function.”**

For descriptions of each command organized alphabetically, see **“SF51 Configuration Commands” on page 38.**

Configuration Commands By Function

The configuration commands are grouped by function and reflect the organization of the Commands window in EasySet.

Command	Default Value	See Page
Administrator reset factory defaults	N/A	38
User reset factory defaults	N/A	51

Bluetooth Command	Default Value	See Page
Bluetooth security	Active	40
Bluetooth PIN	0000	40
Bluetooth discoverable	Fully discoverable	7
Bluetooth profile	Serial port profile (SPP)	40
Bluetooth device name	SF51 Scanner <Bluetooth Address>	7
Bluetooth connect/disconnect	Disconnect	39

Data Transmission Command	Default Value	See Page
Data editing	N/A	43
Postamble	<CR><LF>	46
Preamble	None	46
Symbology identifier	Not transmitted	47

Chapter 4 – Configuration Command Reference

Symbology	Default Value	See Page
Disable all symbologies	N/A	43
Codabar	Not active	41
Codablock		
Codablock A	Not active	41
Codablock F	Not active	41
Code 11	Not active	41
Code 39	Active	41
Code 93/93i	Not active	41
Code 128/EAN 128	Active	42
ISBT 128	Active	42
GTIN processing	Not active	42
EAN.UCC Composite	Not active	44
Interleaved 2 of 5	Not active	45
Matrix 2 of 5	Not active	45
Micro PDF417	Not active	45
MSI	Not active	45
PDF417	Active	45
Plessey	Not active	46
RSS		
RSS 14	Not active	46
RSS Expanded	Not active	46
RSS Limited	Not active	47
Standard 2 of 5	Not active	15
Telepen	Not active	48
TLC 39	Not active	17
UPC/EAN	Active	51
ISBN	Not active	51
GTIN processing	Not active	51



Note: Stacked 2D bar code symbologies are only available on the PDF version of the SF51. For help setting symbology options, see the EasySet software.

Chapter 4 – Configuration Command Reference

Trigger Activation Command	Default Value	See Page
Trigger mode	Level	49
Trigger timeout	2 sec	50
Turn off after good read	Active	50

Data Decoding Security Command	Default Value	See Page
Consecutive same read data validation	Auto read count before transmission	43
Timeout between identical consecutive codes	300 ms	48
Timeout between different consecutive codes	None	48

Beeps/Green Indicator LED Command	Default Value	See Page
Beep volume	High	39
Note (Beep frequency)	2610 Hz	38
Good read beeps		
Number	1	44
Duration	80 ms	44
Timing	After transmission	44
Good read LED duration	2000 ms	12
Error beep	On	44
Setup beep	On	15
2D symbologies		
Stacked code crackle	On	47
Vibrate alert		
Vibrate alert	Off	20
Duration	300 ms	52

Chapter 4 – Configuration Command Reference

Command	Default Value	See Page
Configuration modes and utilities	Configuration Enabled	43
Bluetooth device page	N/A	39

SF51 Configuration Commands

This section lists the configuration commands in alphabetical order and provides a description of each command. To configure your SF51 using these commands, see the EasySet software.

Administrator Reset Factory Defaults

Causes the SF51 to perform a restart and restores all configuration commands to their default settings. When you restore all configuration commands to their default settings, you need to reestablish Bluetooth communications.

Beep Duration

Sets the length of the beeps. You can set Beep Duration to a value from 0 to 2550 ms. When Beep Duration is set to 0 ms, the beeper is off. Turning off the beeper does not affect the beeps associated with Bluetooth Connect/Disconnect or Bluetooth Device Page.

Use Beep Duration in combination with Beep Frequency and Beep Volume to define beeps according to operator preference and work environment.

Beep Frequency

Sets the frequency, or pitch, of the beeps. You can set Beep Frequency to a value from 1000 to 5110 Hz.

Use Beep Frequency in combination with Beep Volume and Good Read Beep Duration to define beeps according to operator preference and work environment.

Beep Volume

Adjusts the volume of the beeps. You can set Beep Volume to Low, Medium, or High.



Note: To turn off the beeper, you set the Beep Duration to 0. Turning off the beeper does not affect the beeps associated with Bluetooth Connect/Disconnect or Bluetooth Device Page.

Use Beep Volume in combination with Beep Frequency and Good Read Beep Duration to define beeps according to operator preference and work environment.

Bluetooth Connect/Disconnect

Connects or disconnects Bluetooth communications between the SF51 and host computer if you are using Serial Port Profile (SPP).

To connect to a host computer, enter the Bluetooth address of the computer and scan the bar code with the SF51. To disconnect, scan the disconnect bar code.

Bluetooth Device Name

Sets the name of the scanner. If the scanner is in a discoverable state, its Bluetooth device name is available to host computers during device discovery.

Bluetooth Device Page

If your SF51 is within Bluetooth communication range of your host PC, you can send this command from EasySet to locate the SF51. For help, see [“Paging the SF51” on page 30](#).

Bluetooth Discoverable

Determines the discoverable state of the SF51. When the SF51 is discoverable, it is visible to other Bluetooth devices in communication range.

Chapter 4 – Configuration Command Reference

State	Description
Fully	The SF51 is discoverable to Bluetooth management applications.
Limited	The SF51 is discoverable to Bluetooth management applications for 30 seconds.
Not	The SF51 is not discoverable to Bluetooth management applications.



Note: The SF51 is not discoverable when it is connected to a host device.

Bluetooth PIN

When Bluetooth security is enabled, the Bluetooth PIN is used to authenticate the Bluetooth link and encrypt the data. Depending on the Bluetooth software on your host device, you should only need to enter the Bluetooth PIN the first time you connect and pair the SF51.

For help configuring a Bluetooth PIN, see [“Configuring Security” on page 21](#).

Bluetooth Profile

Configures the SF51 to connect to a host device through the Serial Port Profile (SPP) Bluetooth communications profile. SPP allows the SF51 to use the Bluetooth link as a serial port to communicate with the host device.

For more information, see [“Configuring Bluetooth Communications” on page 21](#).

Bluetooth Security

Enables or disables Bluetooth security. When Bluetooth security is enabled, you need to enter the SF51 Bluetooth PIN before you can use the scanner. For more information, see [“Configuring Security” on page 21](#).

Codabar

Enables or disables decoding of Codabar symbology. Codabar is a self-checking, discrete symbology. The American Blood Commission (ABC) Codabar requires that you retain and transmit the start/stop code digits when processing a Codabar symbol. As a result, configuration CD10 is an illegal configuration.

Codablock A

Enables or disables decoding of Codablock A symbology. Codablock A is a 2D bar code that is an extension of Code 39. If Code 39 is enabled with check digit, you cannot enable Codablock A. For best results, disable Code 39 before you enable Codablock A. If Code 39 is enabled with check digit, Codablock A will not be decoded properly.

Codablock F

Enables or disables decoding of Codablock F symbology. Codablock F is a 2D bar code that is an extension of Code 128. If Code 128 is enabled with check digit, you cannot enable Codablock F. For best results, disable Code 128 before you enable Codablock F.

Code 11

Enables or disables decoding of Code 11 symbology. Code 11 is a very high-density, discrete numeric bar code. It is most extensively used in labeling telecommunications components and equipment.

Code 39

Enables or disables decoding of Code 39 symbology. Code 39 is discrete, variable length, and self-checking. The character set is uppercase A to Z, 0 to 9, dollar sign (\$), period (.), slash (/), percent (%), space (), plus (+), and minus (-).

Code 93/93i

Enables or disables decoding of Code 93/93i symbology. Code 93/93i is a variable length, continuous symbology that uses four element widths.

Code 128/EAN 128

Enables or disables decoding of Code 128/EAN 128 symbology. Code 128 is a very high-density alphanumeric symbology that supports the extended ASCII character set. It is a variable length, continuous code that uses multiple element widths.

Code 128 supports the following function codes.

Function Code	Description
FNC1	FNC1 is used as a separator when multiple identifiers and their fields are concatenated. For example, FNC1 can be useful in keyboard wedge mode when the GS character cannot be transmitted.
FNC2	When the FNC2 character occurs in a bar code, the SF51 temporarily stores the data from the bar code and transmits it as a prefix to the next symbol. In this way, FNC2 can be used to concatenate several symbols before the data is transmitted.

ISBT 128

Enables and configures decoding of ISBT Code 128 symbology. ISBT Code 128 is the global bar code labeling standard for the blood banking industry. It is used to support the worldwide distribution, tracking, and handling of blood bags and blood components.

GTIN Processing for EAN 128

With GTIN processing enabled, a GTIN compliant EAN 128 label will have the first two digits stripped and output 14 digits.

A GTIN (Global Trade Item Number) compliant EAN 128 label:

- is 16 digits long.
- has “01” as the first two digits of the label.

Configuration Modes and Utilities

Use Configuration Modes and Utilities to:

- allow the SF51 to always accept configuration commands by scanning bar codes or to timeout 1 minute after the last configuration command is set by scanning a bar code.
- get the product version, sub-system versions, and Bluetooth address of your SF51.
- page the SF51 from your host PC or turn off the SF51.

For more information and bar codes, see **“Calling Product Support” on page 24.**

Consecutive Same Read Data Validation

To increase decode security, you can have the scanner scan a bar code multiple times to ensure you have a valid read before transmitting the data.

You can set Consecutive Same Read Data Validation from 0 to 10. The default value of 0 sets the scanner to automatically adapt the consecutive same read based on the bar code quality and the trust level of the bar code. For example, labels with a check digit require less reads than labels without a check digit.

Data Editing

Data editing allows you to edit data scanned by the SF51 before it is transmitted to your host. You can define up to seven input scenarios to filter out the data you want to edit. For more information, see the EasySet software.

Disable All Symbologies

This command disables all symbologies. Disabling all symbologies does not reset symbology parameters to their default values. To reset all symbology parameters to their default factory settings, use the Administrator Reset Factory Defaults command. For more information, see **“Administrator Reset Factory Defaults” on page 38.**

EAN.UCC Composite

Enables or disables EAN.UCC Composite symbology. An EAN.UCC Composite symbol consists of a linear component (encoding the item's primary identification) associated with an adjacent 2D Composite Component (encoding supplementary data, such as a batch number or expiration date). The Composite symbol always includes a linear component so that the primary identification is readable by all scanning technologies, and so that 2D imagers can use the linear component as a finder pattern for the adjacent 2D Composite Component.

Error Beep

Enables or disables the error beep. When you scan a configuration bar code that is damaged or unknown, you hear an error beep, and the configuration of the SF51 is not changed.

Good Read Beep Duration

Sets the length of the SF51 good read beeps. You can set Good Read Beep Duration to a value from 0 (off) to 2550 ms.

Use Good Read Beep Duration in combination with Beep Volume and Beep Frequency to define beeps according to operator preference and work environment.

Good Read Beep Number

Determines the number of beeps used for the good read beep: 1, 2, or none.

Good Read Beep Timing

Determines if the good read beep happens before or after successfully transmitting data.

Good Read LED Duration

Sets the amount of time the green Status light stays on after a good read. You can set Good Read LED Duration to a value from 0 (off) to 5110 ms. When the Status light is on due to a long duration time, the SF51 can still read new bar codes and receive commands.

Interleaved 2 of 5

Enables or disables decoding of Interleaved 2 of 5 symbology. Interleaved 2 of 5 is a high-density, self-checking, continuous numeric symbology. It is mainly used in inventory distribution and the automobile industry.

Matrix 2 of 5

Enables or disables decoding of Matrix 2 of 5 symbology. Matrix 2 of 5 is a discrete bar code derived from Code 11.

ChinaPost is available as part of the Matrix 2 of 5 symbology start/stop code. ChinaPost encodes 11 digits with no check digit and has unique start and stop patterns.

Micro PDF417

Enables or disables decoding of Micro PDF417 symbology. Micro PDF417 is a multi-row symbology based on PDF417. It is designed to maximize area efficiency for applications that do not need the maximum data capacity of PDF417. Micro PDF417 contains a limited set of symbol sizes that each includes a fixed level of error correction.

MSI

Enables or disables decoding of MSI symbology. MSI code is similar to Plessey code in that it includes a start pattern, data characters, one or two check digits, and a stop pattern.

PDF417

PDF417 is only supported on the SF51 with PDF version.

Enables or disables decoding of PDF417 symbology. The PDF417 symbology is a stacked 2D symbology that allows you to scan across rows of code. Each row consists of start/stop characters, row identifiers, and symbol characters, which consist of four bars and four spaces each and contain the actual data. This symbology uses error correction symbol characters appended at the end to recover loss of data.

Chapter 4 – Configuration Command Reference

Macro PDF417, a feature of PDF417, extends the capability of PDF417 by allowing up to 99,999 PDF417 symbols to be used to store data. The symbols are concatenated as they are scanned and can be scanned in any order.

Plessey

Enables or disables decoding of Plessey symbology. Plessey code is pulse-width modulated like most other bar codes. It includes a start character, data characters, an eight-bit cyclic check digit, a termination bar, and usually a reverse start character. The code is continuous and not self-checking. You need to configure two parameters for Plessey code: Start Code and Check Digit.

Postamble

Sets the postamble that is appended to any data you scan. Common postambles include cursor controls such as a tab or a carriage return line feed. You can set Postamble to up to 20 ASCII characters.

Preamble

Sets the preamble that precedes any data you scan. Common preambles include a data location number or an operator number. You can set Preamble to up to 20 ASCII characters.

RSS 14

Enables or disables decoding of RSS 14 (Reduced Space Symbology 14) 1D or stacked 2D codes. RSS 14 is a numeric symbology that can read stacked omni-directional bar code labels. It is a member of the EAN.UCC RSS symbology family.



Note: To read RSS 14 stacked 2D codes, RSS Expanded or RSS Limited must also be enabled.

RSS Expanded

Enables or disables decoding of RSS Expanded (Reduced Space Symbology Expanded). RSS Expanded is an alphanumeric symbology that can read RSS limited and stacked bar code labels. It is a member of the EAN.UCC RSS symbology family.

RSS Limited

Enables or disables decoding of RSS Limited (Reduced Space Symbology Limited). RSS Limited is a numeric symbology that does not read stacked bar code labels. It is a member of the EAN.UCC RSS symbology family.

Setup Beep

Enables or disables the setup beep. When you successfully scan a configuration bar code, you hear the setup beep, and the configuration of the SF51 is changed.

Stacked Code Crackle

Enables or disables the crackle sound when you scan a stacked (2D) bar code.

Standard 2 of 5

Enables or disables decoding of Standard 2 of 5 symbology. Standard 2 of 5 is a low-density numeric symbology. It encodes all information in the bars and uses the fixed-width spaces to separate the bars. Standard 2 of 5 is used in warehouse sorting, photofinishing, and airline tickets.

Symbology Identifier

Symbology identifiers allow you to indicate what type of data is being sent by prepending an identifier to the data. You can prepend one of the following types of character strings to identify which symbology the data is using.

Chapter 4 – Configuration Command Reference

Character String	Description
AIM ISO/IEC standard	The AIM Standard for symbology identifiers consists of a three-character structure indicating the symbology and the optional features of the symbology. For more information about the AIM Standard for symbology identifiers, refer to the AIM ISO/IEC Standard.
User-defined ASCII character string	The user-defined symbology identifier (UDSI) is one to four ASCII characters in length. You can configure user-defined symbology identifiers to assign custom identifier strings to the bar code symbologies.
Code Mark	The code mark identifier is a single character user-defined symbology identifier. Its value can range from 0x00 to 0xFF.

Telepen

Enables or disables decoding of Telepen symbology. Telepen is the only symbology to directly represent the full ASCII character set without shift characters. It is extremely secure as it has negligible risk of misreads and has a double density numeric only mode.

Timeout Between Different Consecutive Codes

Use this command to invalidate a second bar code read that occurs before the timeout expires. Use this command when scanning bar codes that contain different data as opposed to the Timeout Between Identical Consecutive Codes command that you use when your bar codes contain identical data.

You can set Timeout Between Different Consecutive Codes to a value from 0 to 2550 ms.

Timeout Between Identical Consecutive Codes

Use this command to invalidate a second bar code read that occurs before the timeout expires. Use this command when scanning bar codes with identical data as opposed to the Timeout Between Different Consecutive Codes command that you use when your bar codes contain different data.

You can set Timeout Between Identical Consecutive Codes to a value from 0 to 2550 ms.

TLC 39

TLC 39 is a “composite” symbology designed for the Telecommunications Industry. TLC 39 combines a Code 39 symbol, encoding a part number (for items such as plug-in boards at central switching stations) with a “linked” MicroPDF417 symbol encoding a serial number and other optional information.

The first 6 characters must be numeric and include the ECI number. The 7th character is a delimiter between the linear data portion and the composite data portion, typically a comma, but other delimiters are allowed. The next piece of data is a mandatory unique Serial Number.

There can be other data fields after the Serial Number, usually either AppIDs or DataIDs, which are governed by whether or not there are alpha characters in the serial number. Country Of Origin is another typical data field that is included in this symbology.

Trigger Mode

Trigger mode allows you to set different types of triggering for the scanner.

Mode	Description
Continuous/ Edge	When you press the Scan button, the red scanner beam turns and stays on. When you press the Scan button a second time, the scanner turns off. Simply releasing the button does not turn off the scanner.
Level	When you press the Scan button, the red scanner beam turns on and stays on until you release the Scan button or until the SF51 successfully decodes a bar code. When you scan a data bar code, data transmission may be slow if there is interference with Bluetooth communications, or if the SF51 is too far from the host device. While the SF51 is waiting, the scanner beam blinks. During this time, you can scan configuration bar codes but not data bar codes. When the SF51 receives acknowledgement from the host, the scanner turns off, and the SF51 beeps.

Chapter 4 – Configuration Command Reference

Mode	Description
Pulse	When you press the Scan button, the red scanner beam turns on. The scanner remains on until the Trigger Timeout period is reached.
Flashing	When you press the Scan button, the red scanner beam turns on and the SF51 checks for a bar code to read. When the Trigger Timeout period is reached, the scanner starts flashing. When the SF51 finds and reads a bar code, it resets the Trigger Timeout period. If you press the Scan button a second time, the scanner turns off.
Autostand	Autostand mode allows you to switch between level mode and flashing mode. The first time you press the Scan button, the scanner beam turns on and the scanner is in flashing mode. You switch to level mode by pressing the Scan button again. If the scanner is idle and the Trigger Timeout period is reached, the scanner returns to flashing mode.
Aim	Aim triggering allows you to turn on the scanner and aim the red scanner beam without causing a decode. Releasing the Scan button enables the decode.



Note: EasySet contains a folder, **Predefined Modes**, in **Operating Settings > Trigger Activation**. The commands in this folder are currently not supported on the SF51.

Trigger Timeout

Set the Trigger Timeout for the Trigger Mode command. You can set Trigger Timeout from 1 to 4095 seconds.

Turn Off After Good Read

Sets how the SF51 operates in level and pulse trigger modes.

Trigger Mode	Turn Off After Good Read	SF51 Behavior
Level	Enabled	The SF51 turns off after it successfully reads a bar code.
Level	Disabled	The SF51 stays on until you release the Scan button.

Chapter 4 – Configuration Command Reference

Trigger Mode	Turn Off After Good Read	SF51 Behavior
Pulse	Enabled	The SF51 turns off after it successfully reads a bar code.
Pulse	Disabled	The SF51 stays on until the Trigger Timeout period is reached.

UPC/EAN

Enables or disables decoding of Universal Product Code (UPC)/European Article Numbering (EAN) symbology. UPC/EAN are fixed-length, numeric, continuous symbologies that use four element widths. A scanner that is configured to decode EAN bar codes can decode UPC, but the reverse is not true. UPC code is a subset of EAN code.

ISBN

ISBN (International Standard Book Number) is a 10-digit symbology that uniquely identifies books for tracking and ordering.

With ISBN enabled, the first three characters (978) are ignored, and the checksum is calculated on the remaining characters.

GTIN Processing

With GTIN (Global Trade Item Number) processing enabled, two zeros are padded to the beginning of UPC-A, and one zero is padded to the beginning of EAN-13 to expand the numbers to 14 digits. To use GTIN processing you also need to enable the corresponding UPC/EAN symbology.

User Reset Factory Defaults

Causes the SF51 to perform a restart and restores all configuration commands to their default settings, only if **no** settings are locked. To reset all settings on the SF51, including locked settings, use the Administrator Reset Factory Defaults command. For more information, see [“Administrator Reset Factory Defaults” on page 38](#).

When you restore all configuration commands to their default settings, you need to reestablish Bluetooth communications.

Chapter 4 – Configuration Command Reference

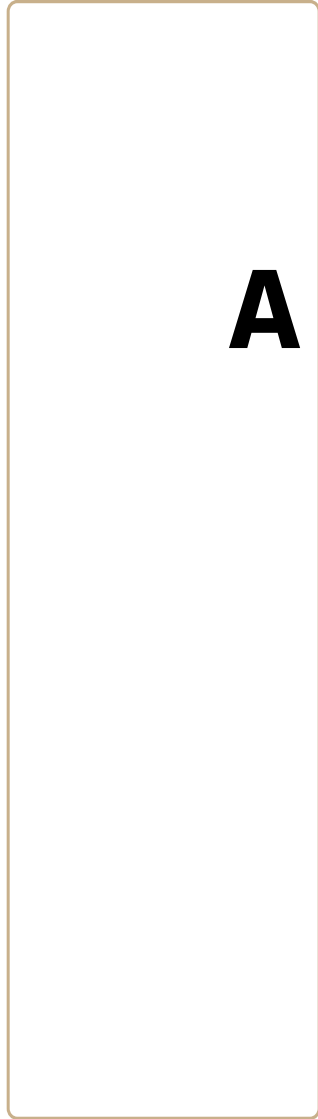
Vibrate Alert

Enables or disables the vibrate alert. When Vibrate Alert is enabled, the scanner vibrates when you scan a valid bar code.

Vibrate Alert Duration

Sets the amount of time that the vibrate alert remains on. You can set Vibrate Alert Duration to a value from 0 to 2550 ms.

A Appendix



Specifications

Use this section to find technical information about the SF51.

Physical Dimensions

Length:	15.7 cm (6.1 in)
Height:	3.4 cm (1.3 in)
Width:	4.6 cm (1.8 in) at the scanner, tapered to 3.2 cm (1.26 in) at the handle
Weight:	263 g (9.3 oz)

Power and Electrical Specifications

Operating:	Rechargeable lithium-ion battery
Electrical rating:	≡ 5V; 1.5A

Temperature and Environmental Specifications

Operating:	-20°C to 50°C (-4°F to 122°F)
Storage:	-20°C to 60°C (-4°F to 140°F)
Charging:	0°C to 35°C (32°F to 95°F)
Relative humidity:	0 to 95% non-condensing
Environmental rating:	IP52

Bar Code Symbolologies

- Codabar
- Codablock A
- Codablock F
- Code 11
- Code 39
- Code 93/93i
- Code 128 / EAN 128
- EAN.UCC Composite
- Interleaved 2 of 5
- Matrix 2 of 5
- Micro PDF417
- MSI
- PDF417
- Plessey
- RSS 14
- RSS 14 Stacked
- RSS Limited
- RSS Expanded
- Standard 2 of 5
- Telepen
- TLC 39
- UPC/EAN



Note: PDF417 and Micro PDF417 are only available on the SF51 with PDF version.

Bluetooth Radio

Radio Type: Bluetooth Class 1 version 1.2
Frequency: 2.4 GHz
Radio Data Rate: 721 Kbits per second

Communication Range

Host radio Class 1: 30.5 m (100 ft)
Host radio Class 2: 10 m (32.8 ft)
Features: Adaptive Frequency Hopping (ADF)

EV10 Scanner

Scan rate: 200 scans per second
Scan range: up to 50 cm (19.7 in)
Scan angle: 40 degrees
Minimum X dimension: 4 mils (0.1 mm)

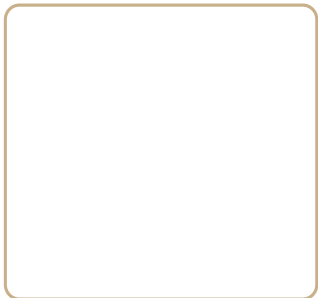
Accessories for the SF51

You can use these accessories (sold and ordered separately) with the SF51. To order accessories, contact your local Intermec sales representative.

Accessory	Description
1-Bay Charger	The 1-bay charger (Model 074645) charges the battery in the SF51 and is designed to be mounted on a horizontal or vertical surface.
1-Bay Charger Power Supply	The power supply for the 1-bay charger (P/N 851-086-xxx) provides AC power to the 1-bay charger. It comes with power supply adapters for Australia, Continental Europe, United Kingdom, North America, Central America, Mexico, and Japan. It also comes with a flat plate for use with an AC power cord. The AC power cord is not included.
4-Bay Charger	The 4-bay charger (Model 074646) has the same functionality of the 1-bay charger, except it allows you to charge up to four SF51 scanners at the same time.
4-Bay Charger Power Supply	The power supply for the 4-bay charger (P/N 851-088-xxx) provides AC power to the 4-bay charger.
USB Bluetooth Adapter	The USB Bluetooth Adapter (P/N 203-771-xxx) provides wireless communications to your host computer and data collection application.
RS-232 Bluetooth Adapter	The RS-232 Bluetooth Adapter (P/N 203-768-xxx) provides wireless communications to your host computer and data collection application through an RS-232 serial port on your PC.
Forearm Holster	The forearm holster (P/N 074649) provides you with an easy way to carry the SF51 when you are not using it. The holster supports either right-handed or left-handed use.
Chest Strap Holder	Use the chest strap holder (P/N 825-173-xxx) to carry the SF51 when you are not using it.
Industrial belt clip holder	Use the belt clip (P/N 825-172-xxx) to carry the SF51 when you are not using it.



Index



Index

Symbols

.ldr, firmware upgrade file 27

Numerics

1-bay charger
accessory, described 56
power supply, accessory,
described 56

4-bay charger
accessory, described 56
power supply, accessory,
described 56

A

accessories, described 56
Administrator Reset Factory
Defaults
bar code 25, 26
command 38
aim, Trigger Mode, described 50
audio feedback. *See* beeps
autostand, Trigger Mode,
described 50

B

bar code symbologies
Codabar 41
Codablock A 41
Codablock F 41
Code 11 41
Code 128 / EAN 128 42
Code 39 41
Code 93/93i 41
EAN.UCC Composite 44
Interleaved 2 of 5 45
ISBT 128 42
Matrix 2 of 5 45
Micro PDF417 45
MSI 45
PDF417 45
Plessey 46
RSS 14 46
RSS Expanded 46
RSS Limited 47
Standard 2 of 5 47
Telepen 48
TLC 39 49
UPC/EAN 51
bar codes
scanning
how to 7
troubleshooting 27

setup sheet, described 18
supported symbologies 56
symbologies, default 7

battery
charger
1-bay charger, described 56
4-bay charger, described 56
charging 3
checking status 3
using 2
Beep Duration command 38
Beep Frequency command 38
Beep Volume command 39
beeper, turning off 7
beeps, understanding 6
belt clip, accessory, described 56
blue light *See* Intermec Ready-to-
Work indicator 5
Bluetooth
adapter
accessory, described 56
installing 14
communications
configuring 21
host PC, connecting to 14
troubleshooting 25, 26
Connect/Disconnect
command 39
Device Name command 39
Device Page command
described 39
how to find your SF51 30
Discoverable command 39
host devices supported 12
PIN
command 40
forgot, troubleshooting 26
security, configuring 22
Profile command 40
radio
communication
configuring 21
range 55
specifications 55
Security command 40
SF51 Bluetooth address
how to get 24
illustration 12
Bluetooth Device Disconnect, bar
code 14
button, scan, illustration 2

C

- calling Product Support 24
- charger
 - 1-bay charger, described 56
 - 4-bay charger, described 56
- charging, battery 3
- chest strap holster, accessory, described 56
- ChinaPost, Matrix 2 of 5 setting, described 45
- cleaning, scanner window 31
- Codabar command 41
- Codablock A command 41
- Codablock F command 41
- Code 11 command 41
- Code 128 / EAN 128 command
 - described 42
 - function codes, described 42
 - GTIN Processing for EAN 128 42
 - ISBT 128 42
- Code 39 command 41
- Code 93/93i command 41
- collecting data, how to 18
- commands. *See* configuration commands
- communication range, Bluetooth radio 55
- computers, Bluetooth supported 12
- configuration commands
 - Administrator Reset Factory Defaults 38
 - Beep Duration 38
 - Beep Frequency 38
 - Beep Volume 39
 - Bluetooth Connect/Disconnect 39
 - Bluetooth Device Name 39
 - Bluetooth Device Page 39
 - Bluetooth Discoverable 39
 - Bluetooth PIN 40
 - Bluetooth Profile 40
 - Codabar 41
 - Codablock A 41
 - Codablock F 41
 - Code 11 41
 - Code 128 / EAN 128 42
 - GTIN Processing for EAN 128 42
 - ISBT 128 42
 - Code 39 41
 - Code 93/93i 41
 - Configuration Modes and Utilities 43
 - Consecutive Same Read Data Validation 43
 - Data Editing 43
 - default values 35–38
 - Disable All Symbologies 43
 - EAN.UCC Composite 44
 - Error Beep 44
 - Good Read Beep Duration 44
 - Good Read Beep Number 44
 - Good Read Beep Timing 44
 - Good Read LED Duration 44
 - Interleaved 2 of 5 45
 - ISBT 128 42
 - Matrix 2 of 5 45
 - Micro PDF417 45
 - MSI 45
 - PDF417 45
 - Plessey 46
 - Postamble 46
 - Preamble 46
 - RSS 14 46
 - RSS Expanded 46
 - RSS Limited 47
 - Setup Beep 47
 - Stacked Code Crackle 47
 - Standard 2 of 5 47
 - Symbology Identifier 47
 - Telepen 48
 - Timeout Between Different Consecutive Codes 48
 - Timeout Between Identical Consecutive Codes 48
 - TLC 39 49
 - Trigger Mode 49
 - Trigger Timeout 50
 - Turn Off After Good Read 50
 - UPC/EAN 51
 - GTIN processing 51
 - ISBN, described 51
 - User Reset Factory Defaults 51
 - using to configure the SF51 34
 - Vibrate Alert 52
 - Vibrate Alert Duration 52
- Configuration Modes and Utilities
 - bar codes 24
 - command 43
- configuring

Index

- Bluetooth communications 21
 - from Intermec computer 20
 - parameters 18
 - security 21
 - using EasySet 18
- connecting to a host device
 - as a keyboard wedge 14
 - host PC 14
 - Intermec computer 13
 - overview 12
- Consecutive Same Read Data
 - Validation command 43
- continuous/edge, Trigger Mode, described 49
- D**
- Data Editing command 43
- data transmission settings,
 - configuration commands, list of 35
- data, collecting 18
- default configuration
 - restoring 20
 - values 35–38
- dimensions, physical 54
- Disable All Symbologies
 - command 43
- disconnecting, how to 14
- discoverable state
 - described 39
 - security, configuring 22
- E**
- EAN 128, GTIN processing 42
- EAN.UCC Composite command 44
- EasySet
 - using to configure the SF51 18
 - where to download 7
- electrical specifications 54
- Error Beep command 44
- F**
- factory default settings, restoring 20
- firmware
 - upgrading 28
 - version, how to get 24
- FNC1, Code 128 / EAN 128
 - function code, described 42
- FNC2, Code 128 / EAN 128
 - function code, described 42
- forearm holster, accessory,
 - described 56
- forgot Bluetooth PIN,
 - troubleshooting 26
- G**
- Get Product Version bar code 24
- Get SF51 Bluetooth Device
 - Address bar code 24, 25
- Good Read
 - Beep
 - Duration command 44
 - Number command 44
 - Timing command 44
 - LED Duration command 44
- green light. *See* status light
- GTIN processing
 - EAN 128 42
 - UPC/EAN 51
- H**
- holster, accessories, described 56
- humidity, specifications 54
- I**
- Interleaved 2 of 5 command 45
- Intermec
 - computer
 - connecting to 13
 - supported 12
 - using to configure SF51 20
 - contact information ii
 - Ready-to-Work indicator
 - described 5
 - illustration 5
- ISBT 128 command 42
- K**
- keyboard wedge
 - collecting data 18
- Keyport Bluetooth
 - connecting 15
 - described 14
- Keyport Lite
 - connecting 16
 - described 14
 - troubleshooting 27
- L**
- labels, bar code, scanning 7
- level, Trigger Mode, described 49
- lights

- blue. *See* Intermec Ready-to-Work indicator
- Intermec Ready-to-Work indicator, described 5
- understanding 5
- limited discoverable
 - bar code 22
 - described 40
- M**
- Macro PDF417, described 46
- magnetic connector, illustration 2
- Matrix 2 of 5 command
 - ChinaPost 45
 - described 45
- Micro PDF417 command 45
- MSI command 45
- O**
- off, turning off the SF51 4
- on, turning on the SF51 4
- operating the SF51
 - humidity range 54
 - temperature range 54
- P**
- paging the SF51, how to 30
- parameters, configuring SF51 18
- PDF417 command 45
- physical
 - dimensions 54
 - specifications 54
- Plessey command 46
- Postamble command 46
- power down bar code 4
- power specifications 54
- power supply
 - 1-bay charger, accessory, described 56
 - 4-bay charger, accessory, described 56
- Preamble command 46
- problems, finding and solving 25
- Product Support, calling 24
- product version, how to get 24
- pulse, Trigger Mode, described 50
- R**
- radio
 - communications, configuring 21
 - specifications 55
- Ready-to-Work indicator
 - described 5
 - illustration 5
- red light. *See* status light
- resetting, SF51 31
- restoring default settings 20
- RS-232 Bluetooth adapter. *See* Bluetooth adapter
- RSS 14 command 46
- RSS Expanded command 46
- RSS Limited command 47
- S**
- Scan button
 - illustration 2
- scanner window, cleaning 31
- scanner *See* SF51 2
- scanning
 - bar codes
 - described 7
 - how to hold the SF51 8
 - troubleshooting 27
- security
 - Bluetooth PIN 22
 - configuring 21
 - discoverable state 22
- Serial port profile, Bluetooth
 - configuring 40
 - described 21
 - disconnecting 14
 - resetting the SF51 31
- settings, restoring default 20
- Setup Beep command 47
- SF51
 - Bluetooth address
 - how to get 24
 - illustration 12
 - cleaning 31
 - configuring 18
 - connecting to a host device
 - as a keyboard wedge 14
 - host PC 14
 - Intermec computer 13
 - overview 12
 - description 2
 - firmware
 - upgrading 28
 - version, how to get 24
 - how to turn on 4
 - paging using Bluetooth Device Page command 30
 - product version, how to get 24
 - resetting 31

Index

- scan engine, specifications 55
 - sub-system version, how to get 24
 - turning off 4
 - turning on 4
 - upgrading 28
 - using to scan bar codes 7
 - with PDF version
 - bar code symbologies supported 55
 - default bar code symbologies 7
 - sounds. *See* beeps
 - specifications
 - electrical 54
 - humidity 54
 - power 54
 - radio, Bluetooth 55
 - scan engine 55
 - temperature 54
 - SPP. *See* Serial port profile, Bluetooth
 - Stacked Code Crackle command 47
 - Standard 2 of 5 command 47
 - status
 - beeps 6
 - checking battery 3
 - light illustration 5
 - sub-system version, how to get 24
 - symbologies, bar code
 - default 7
 - list of 36
 - supported 55
 - Symbology Identifier command 47
- T**
- Telepen command 48
 - temperature, specifications 54
 - Timeout Between Different Consecutive Codes command 48
 - Timeout Between Identical Consecutive Codes command 48
 - TLC 39 command 49
 - Trigger Mode command 49
 - Trigger Timeout command 50
 - troubleshooting
 - Bluetooth PIN, forgot 26
 - cannot establish a Bluetooth connection 25, 26
 - keyboard wedge mode 27
 - lost Bluetooth connection 25
 - resetting the SF51 31
 - scanning 27
 - Turn Off After Good Read command 50
 - turning off the SF51 4
 - turning on the SF51 4
- U**
- understanding
 - beeps 6
 - lights 5
 - UPC/EAN command 51
 - GTIN processing 51
 - ISBN 51
 - upgrading, SF51 28
 - USB Bluetooth adapter. *See* Bluetooth adapter
 - User Reset Factory Defaults command 51
- V**
- Vibrate Alert
 - command, described 52
 - described 8
 - turning off 9
 - turning on 9
 - volume, adjusting 39
- W**
- wedge, keyboard. *See* keyboard wedge
 - wireless communications, configuring 21



Worldwide Headquarters
6001 36th Avenue West
Everett, Washington 98203
U.S.A.

tel 425.348.2600

fax 425.355.9551

www.intermec.com

© 2008 Intermec Technologies
Corporation. All rights reserved.

SF51 Cordless Scanner User's Guide



P/N 074474-006