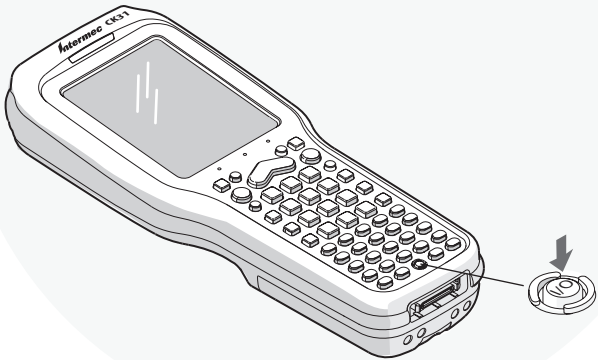


CK31 Handheld Computer Operator's Guide

You should use this operator's guide if you use the CK31 daily to perform your job. This guide contains basic operating information to help you use the CK31.

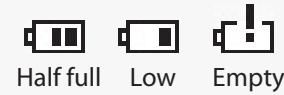
Turn on the CK31.

Press **⏻** (the **Power** key) to turn on the CK31. When you turn on the CK31, the screen turns on. If the screen does not turn on, install a charged battery.



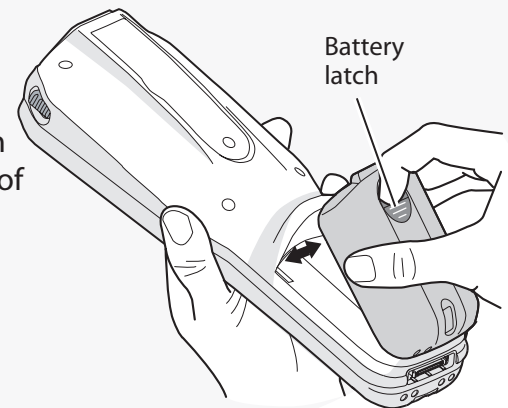
Check the battery level.

Icons appear on the screen when the battery is not fully charged.



If the battery is low, change it.

- 1 Press **⏻** to turn off the CK31.
- 2 Press down on the latch and lift the battery out of the CK31.
- 3 Insert the tabs on the new battery into the bottom of the opening.
- 4 Press the battery in place to snap the latch.



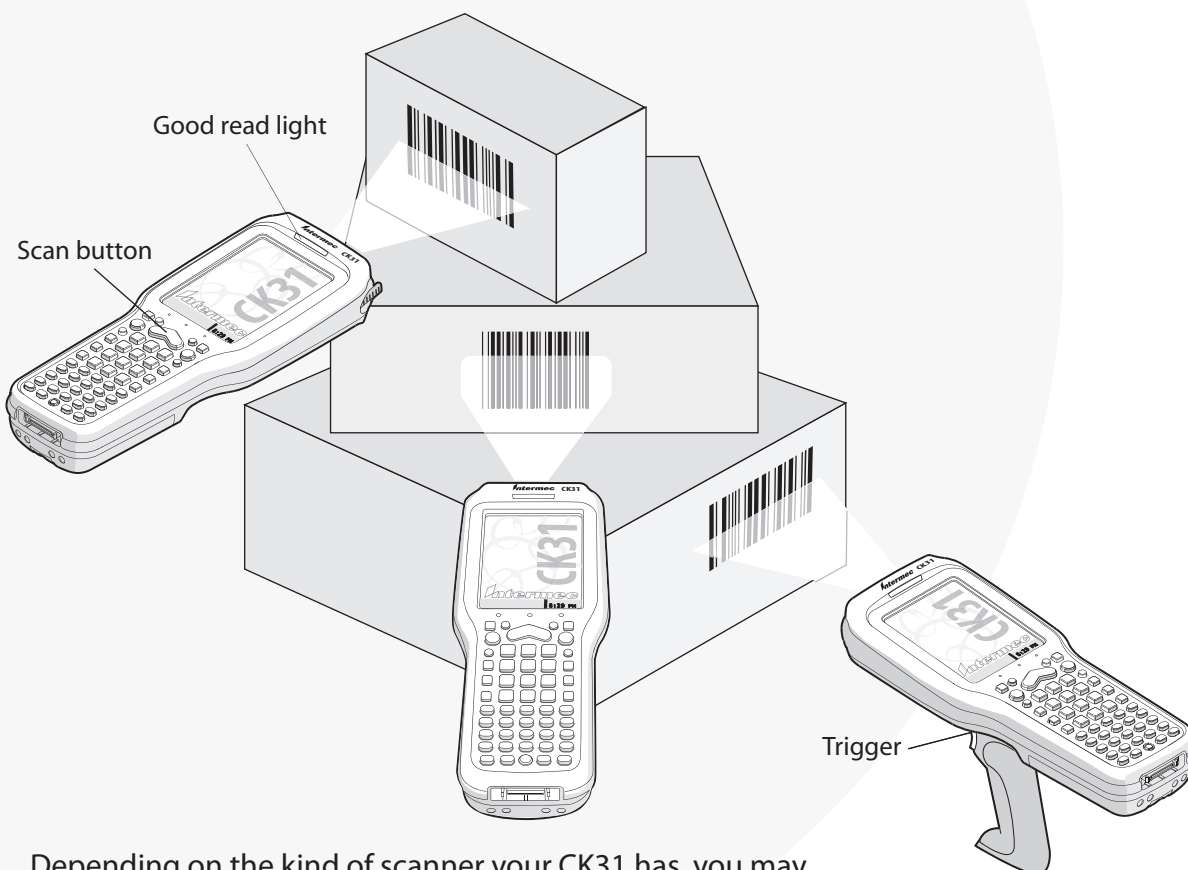
Scan a bar code.

- 1 Point the CK31 at the bar code.
- 2 Press the Scan button or pull the trigger.

If your CK31 has a laser scanner, a red spot or narrow beam of light appears near the bar code.

If your CK31 has an imager, a wide beam of light appears near the bar code.

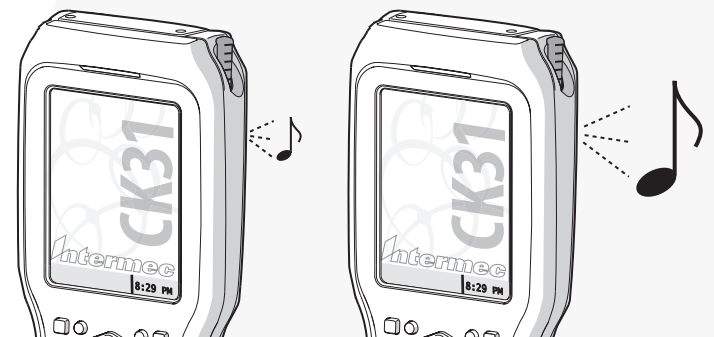
- 3 Move the CK31 so the spot or beam is centered on the bar code. When the Good Read light turns on, the bar code has been scanned.



Depending on the kind of scanner your CK31 has, you may need to move the CK31 closer to or farther from the bar code.

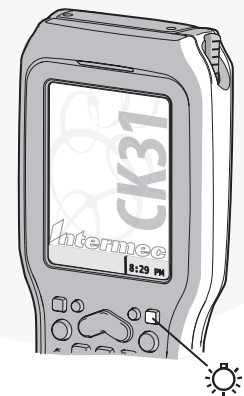
Change beeper volume.

Press and release **⏻** (the **Green** key), and then press and release **🔊** to change the beep volume.



Turn on the backlight.

Press **🔊** (the **Backlight** key) to turn on the backlight. The backlight makes the screen easier to see in dark areas.



Intermec

6001 36th Avenue West
Everett, Washington 98203
U.S.A.

tel 425.348.2600

fax 425.355.9551

www.intermec.com

© 2005 Intermec Technologies Corporation. All rights reserved.

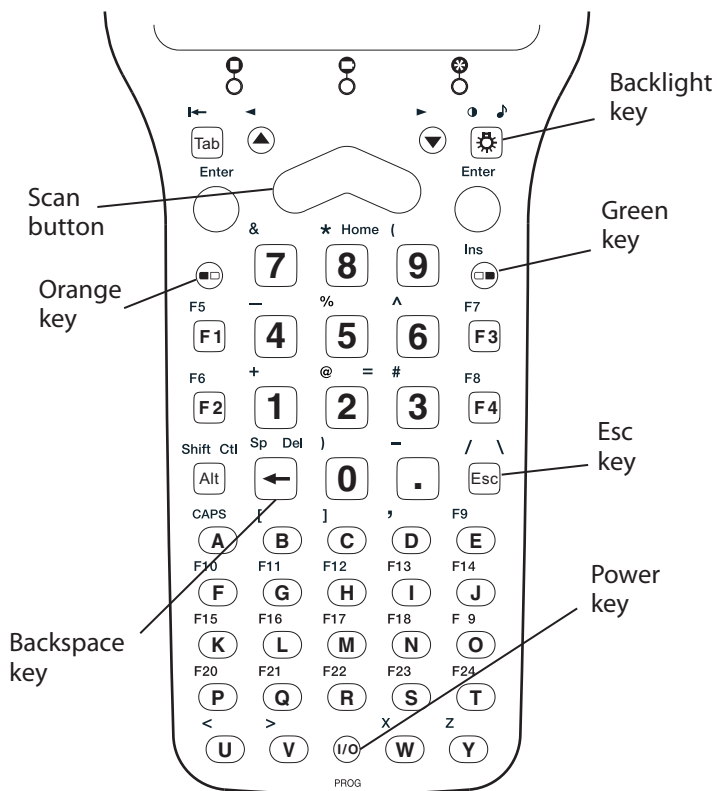
CK31 Handheld Computer Operator's Guide



P/N 075388-001

Using the Keypad

See the next illustration to find the locations of the **Power** (⏻), **Backlight** (💡), **Orange** (🟠), **Green** (🟢), **Backspace**, and **Esc** keys on your CK31.



Using the Screen Icons

While you use the CK31, icons appear at the bottom of the screen to help you keep track of the battery and network connections. See the next table to learn what the icons mean.

Icon	Means
	Battery is half full. You should be able to work for several more hours before changing batteries.
	Battery is almost empty. You need to install a charged battery as soon as possible.
	Battery is empty. Install a charged battery right away!
	Excellent radio connection to the network.
	Good radio connection to the network. You might need to move to get a better connection.
	Bad radio connection to the network. Try moving until you get a better connection.
	No radio connection to the network. You need to move until you get reconnected.
	You pressed the Orange key.
	You pressed the Green key.
	Orange key is locked. Press the Orange key again to unlock it.
	Green key is locked. Press the Green key again to unlock it.



More Information

For more information on operating the CK31, see the *CK31 Handheld Computer Quick Start Guide* (P/N 075205) or the *CK31 Handheld Computer User's Manual* (P/N 075207).