

# IFSYS-8001 IrDA PC Adapter User Guide

Revision 1.04



**Copyright © 2002, 2003 iFoundry Systems  
All Rights Reserved.**

**Information contained within this document is part of the intellectual property of iFoundry Systems (“IFS”). No part of this document may be copied or reproduced in any form or by any means without the prior written consent of IFS.**

**IFS makes no warranties with respect to this document and disclaims any implied warranties of merchantability and fitness for a particular purpose. Information in this document is subject to change without notice. While every attempt is made to ensure accuracy, IFS shall not be liable for any errors or omissions that may appear in this document.**

**The following products are trademarks of the respective companies:**  
Windows 98, Windows 98SE, Windows ME, Windows 2000 family, Windows XP family are trademarks of Microsoft Corporation.  
Acrobat and Acrobat Reader are trademarks of Adobe Systems Incorporated.

## 1. PRODUCT OVERVIEW

---

Thank you for purchasing the IFSYS-8001 IrDA PC Adapter.

### 1.1 Features

---

The IFSYS-8001 adapter:

- connects to your PC through its serial port.
- is easy to install.
- has a flashing LED to indicate infrared transfer activity .
- IrDA link works at up to 115Kbps.

### 1.2 Applications

---

Below are some examples showing how your IFSYS-8001 IrDA PC Adapter can be used:

- synchronise your Palm PDA or Pocket PC device with your PC through the wireless infrared link.
- exchange data between Laptop and PC Desktop.
- connect to your IrDA cellphone.
- transfer photos from your IrDA camera to your Desktop PC.

### 1.3 System Requirements

---

The IFSYS-8001 IrDA PC adapter:

- is designed to work with the following Microsoft Operating Systems – Windows 98/98SE, Windows ME, Windows 2000 family, Windows XP family,
- requires a PC with a free serial port.

Note that some use modes may require additional software that should be provided by your device manufacturer.

### 1.4 Packaging content

---

The package should contain the following items:

- the IFSYS-8001 IrDA PC Adapter
- printed User Guide (this document)
- Warranty Card

## 2 INSTALLING THE DRIVER

---

This section describes the steps for installing the Windows driver for this product. It is worthwhile noting that Microsoft Windows operating system family ships with built-in drivers for the IFSYS-8001 adapter.

### 2.1 Before Starting

---

Installation should be a fairly straightforward process. The user may want to ensure the following items and information are at hand, prior to starting installation:

- Windows CDROM (Windows may require some additional operating system files to be installed),
- Identify the *physical* serial port to which the IFSYS-8001 adapter will be attached. On most computers, this would be either COM1 or COM2. **You will need this information during installation.**

## 2.2 Order of presentation

---

The installation procedures presented in this section are arranged in the following order:

- Windows 98/98SE, Windows ME,
- Windows 2000/Pro,
- Windows XP/Pro.

### 2.3 Windows 98 & Windows ME installation

- Click on **Start->Settings->Control Panel->Add New Hardware**. The following screen will be displayed.



- Close any open programs, then press **Next** to continue.

- The following screen will appear.



- Click **Next** to proceed with searching for devices on your system.



- When Windows finishes searching for Plug and Play devices it will try to locate non plug and play devices.



- Select **No, I want to select the hardware from a list**. Then click **Next**.

- *At this point you may see one of two possible displays.*

If you see the display below, showing an “Infrared devices” entry in the list of hardware types, it means that your Windows operating system is already Infrared device “aware”. Please skip the remaining steps and proceed to **CONTINUATION POINT “A”** a few pages ahead in order to continue with the driver installation.



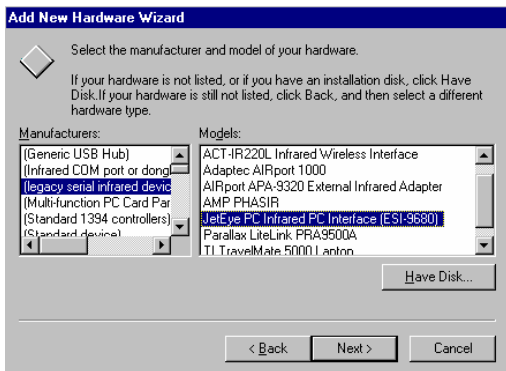
If you do not see the “Infrared devices” entry in the list of hardware types, you will need to run the few additional steps from this point to the point labelled **CONTINUATION POINT “A”** a few pages ahead.

- Scroll down and select **Other devices** from the Hardware types list.



- Click **Next** to proceed.

- A list of hardware products and manufacturers will be presented to you.



- Under Manufacturers, select **(legacy serial infrared devices)**.
- Under Models, select **JetEye PC Infrared PC Interface (ESI-9680)**.
- Click **Next** to proceed.

- When the following display appears, click **Finish**.



At this point you should re-start the installation process, by clicking **Start->Settings->Control Panel->Add New Hardware**. You should be able, next time round, to reach the point in the process where you would be directed to **CONTINUATION POINT "A"** without having to go through these intervening steps.

**CONTINUATION POINT “A”**: You might have been directed here from another section, to continue installation of the IFSYS-8001 driver.

- When Windows displays the list of device types, select **Infrared devices**.



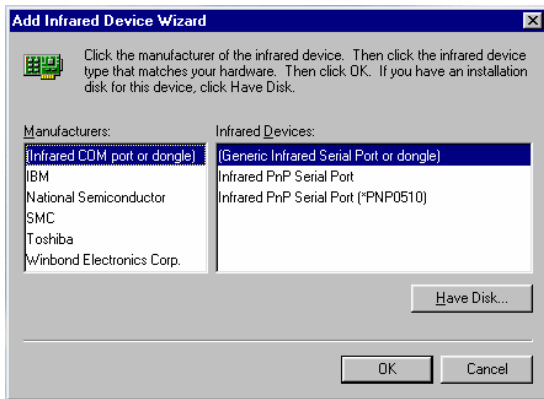
- Then click **Next** to proceed.

- The following screen will appear.



- Click **Next** to continue.

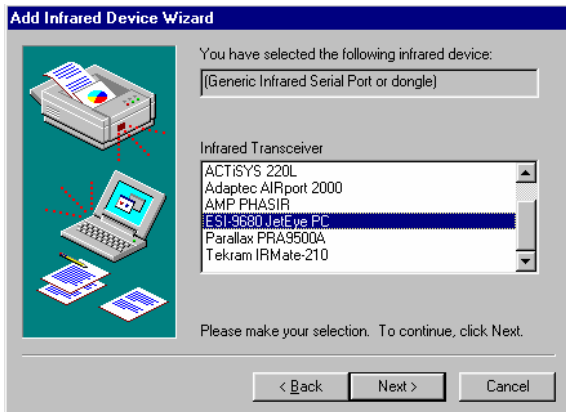
- The Infrared Device wizard screen will be displayed, as shown below:



- Select **(Generic Infrared Serial Port or dongle)**, then click **OK**.

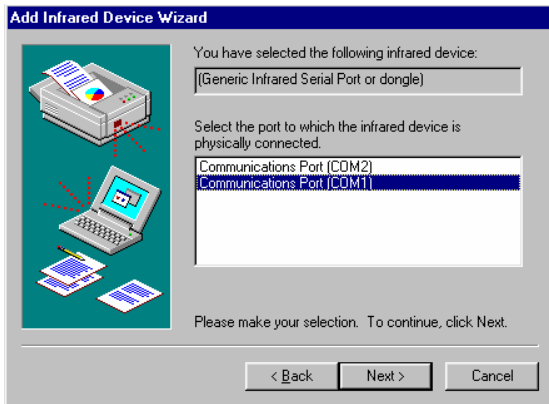


- A list of supported adapters will now appear.



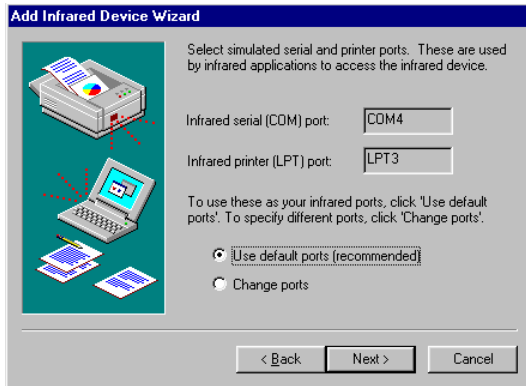
- Select **ESI-9680 JetEye PC**, and press **Next**.

- Windows will now ask to which serial (COM) port the IFSYS-8001 adapter is attached.



- Once you have this information, select the appropriate choice and click **Next**, to proceed with driver installation.
- Note:** this selection depends entirely on which physical COM port the adapter is attached to on your PC, *which could differ from the screen above*.

- When done, Windows will make the IFSYS-8001 adapter's capabilities available to other applications, through 'virtual' ports. You would not normally need to change the settings Windows has selected for you.



- Select **Use default ports (recommended)**, and click **Next** to proceed.

- When done, the screen below is displayed. Click **Finish** to complete the installation,



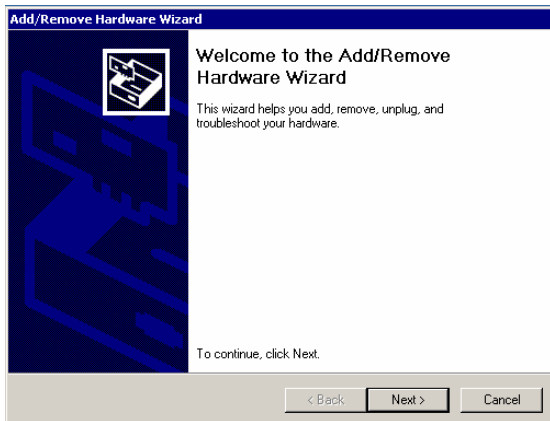
- *Even if Windows does not request you re-boot your PC, we would strongly recommend doing so, to ensure the driver has installed cleanly, before using your newly installed adapter.*

- When Windows has exited, and before the PC reboots, you should attach the IFSYS-8001 adapter to the PC, if you have not already done so.
- Once Windows comes up again, the IFSYS-8001 adapter should be ready for use.

## 2.4 Windows 2000 installation

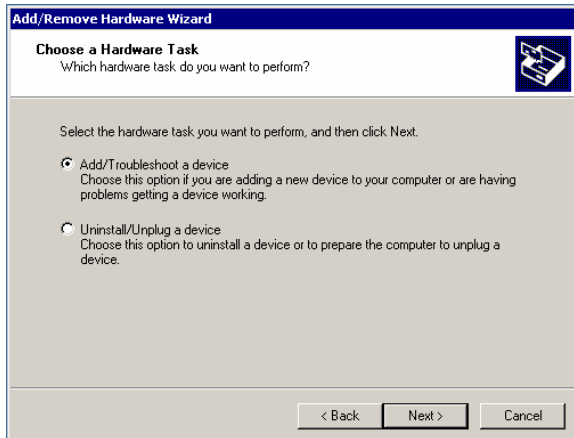
---

- Click on **Start->Settings->Control Panel->Add New Hardware**. The following screen will be displayed.

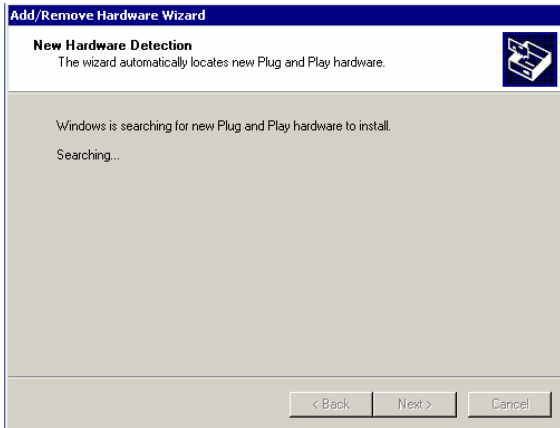


- Press **Next** to continue.

- When the next screen appears, select **Add/Troubleshoot a device**, and click **Next**.

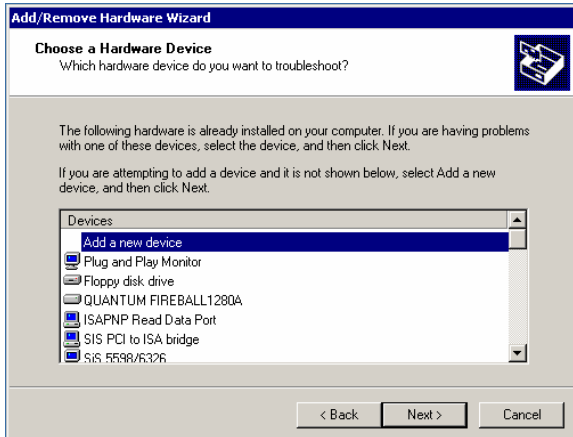


- Windows will then attempt to detect new devices in your system. This should take a few moments.

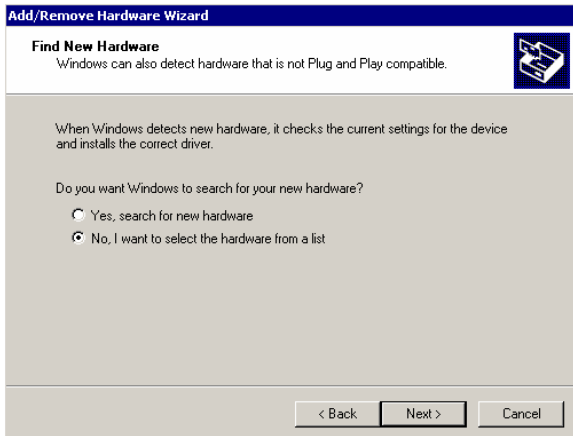




- The following screen will then appear. Select **Add a new device** and click **Next**.

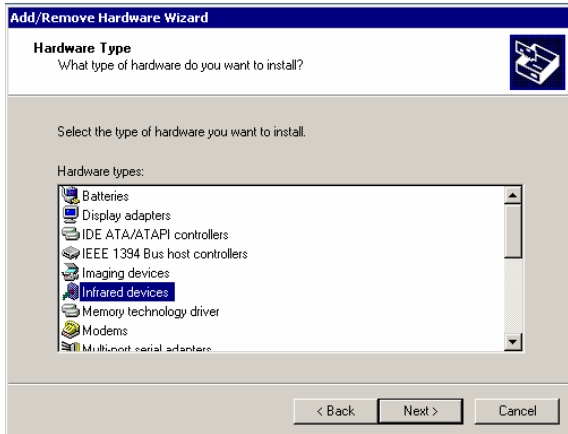


- The following screen will appear.

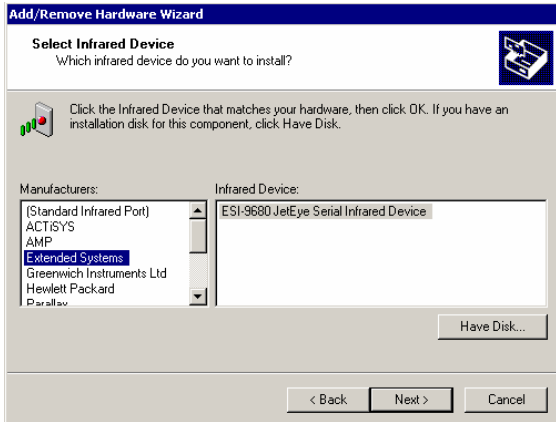


- Select **No, I want to select the hardware from a list** then click **Next**.

- When the list appears, select **Infrared devices**, and click **Next**.

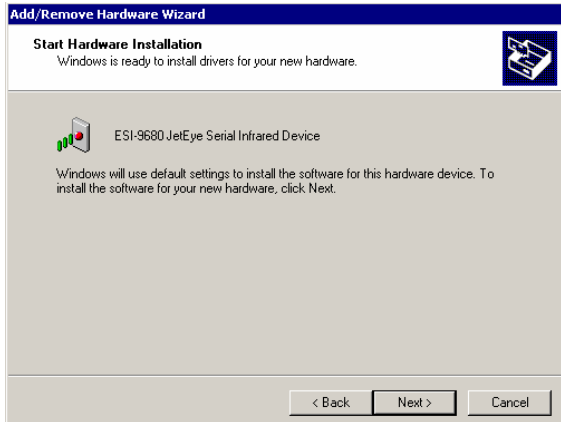


- A list of known infrared adapters will be presented in the next screen.

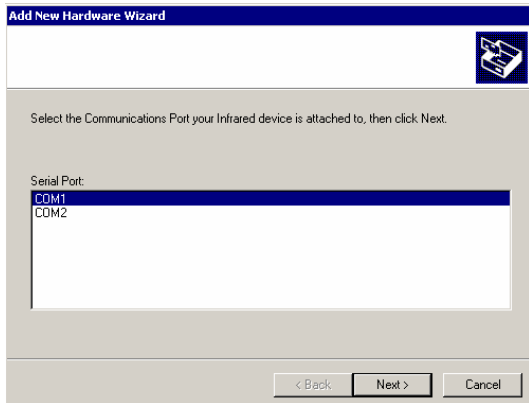


- Select **Extended Systems**, then click **Next**.

- When the following screen appears, click **Next** to allow Windows to proceed with driver installation.

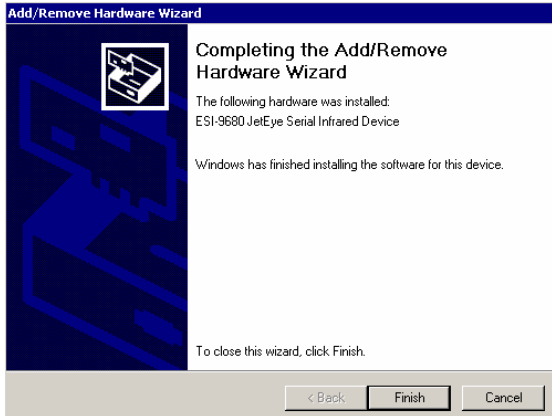


- Windows will now ask to which serial (COM) port the IFSYS-8001 adapter is attached.



- Once you have this information, select the appropriate choice and click **Next**.
- **Note:** this selection depends entirely on which physical COM port the adapter is attached to on your PC, *which could differ from the screen above*.

- When done, the screen below is displayed. Click **Finish** to complete the installation.



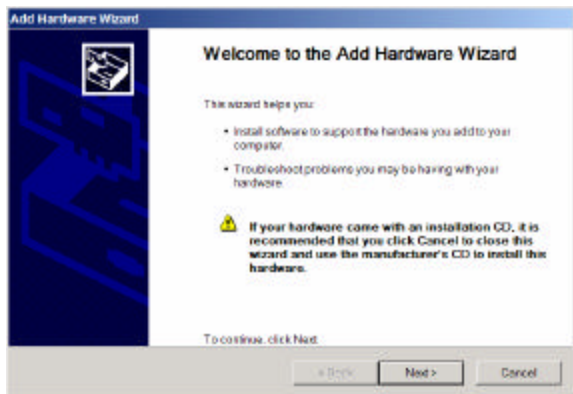
- *Even if Windows does not request you re-boot your PC, we would strongly recommend doing so, to ensure the driver has installed cleanly, before using your newly installed adapter.*

- When Windows has exited, and before the PC reboots, you should attach the IFSYS-8001 adapter to the PC, if you have not already done so.
- Once Windows comes up again, the IFSYS-8001 adapter should be ready for use.



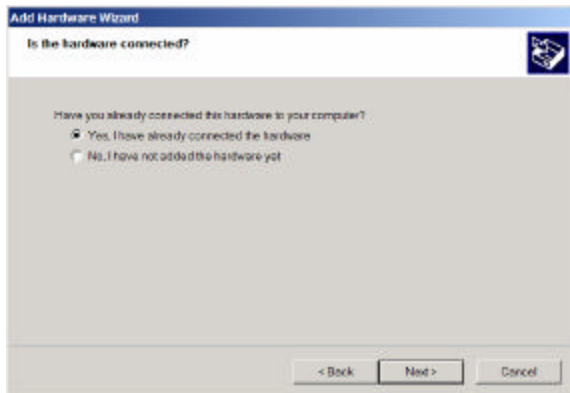
## 2.5 Windows XP installation

- Click on **Start->Settings->Control Panel->Add Hardware**. The following screen will be displayed.



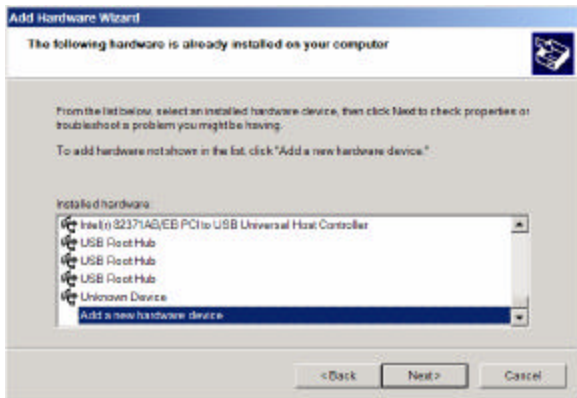
- Click **Next** to proceed.

- When you do that, Windows will ask if the hardware is connected up.



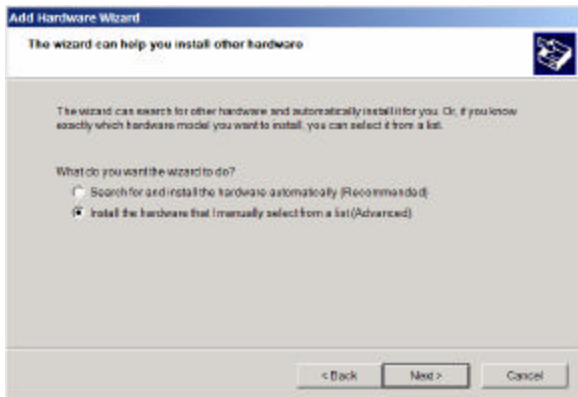
- Select **Yes, I have already connected the hardware**, (even though you may have not)
- Click **Next**.

- The following screen will now appear, showing a list of hardware devices already installed in your system.
- Scroll right down this list and select **Add a new hardware device**.



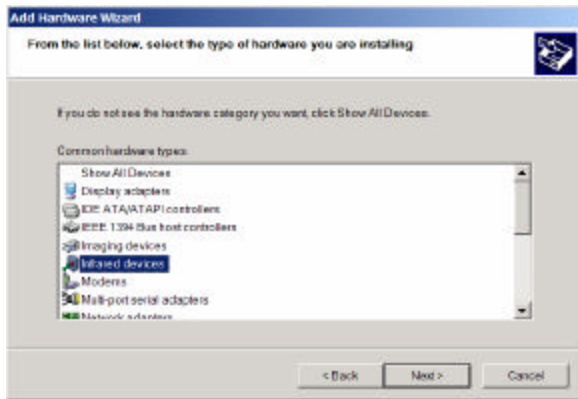
- Click **Next** to proceed.

- The following screen will now appear, with Windows indicating that it can automatically search for new hardware devices you may have attached, or allow you to select from a supported list..



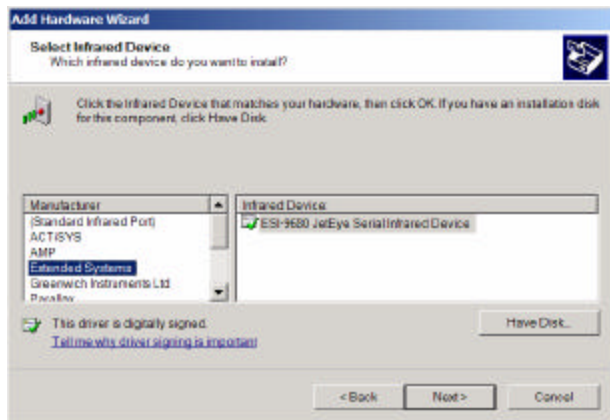
- Select **Install the hardware that I manually select from a list (Advanced)**, and click **Next**.

- The following screen will now appear, presenting a list of types of hardware that Windows is aware of.



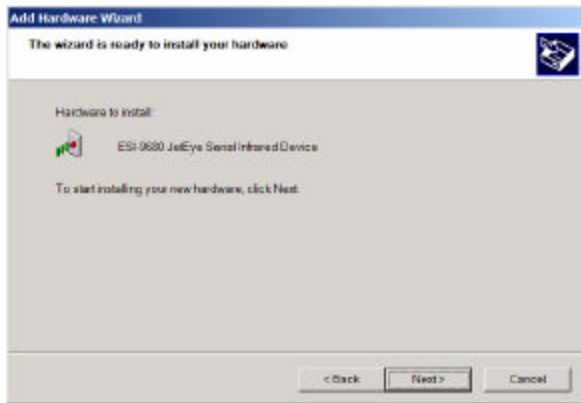
- Select **Infrared devices**, and press **Next** to proceed.

- A list of known infrared devices will be displayed.



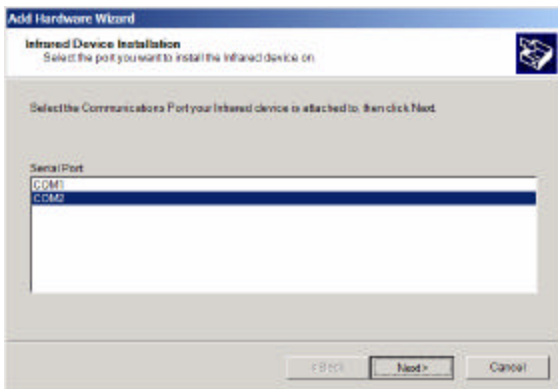
- Select **Extended Systems** from the Manufacturer window.
- Press **Next**.

- The following screen will now appear.



- Press **Next** to proceed with driver installation.

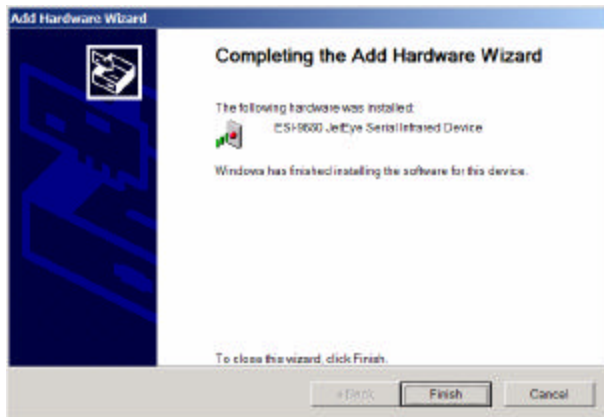
- Windows will now ask to which serial (COM) port the IFSYS-8001 adapter is attached.



- Once you have this information, select the appropriate choice and click **Next**. Windows will now install the driver for the IFSYS-8001 adapter.
- **Note:** this selection depends entirely on which physical COM port the adapter is attached to on your PC, *which could differ from the screen above*.



- When done, the screen below is displayed. Click **Finish** to complete the installation.



- *Even if Windows does not request you re-boot your PC, we would strongly recommend doing so, to ensure the driver has installed cleanly, before using your newly installed adapter.*

- When Windows has exited, and before the PC reboots, you should attach the IFSYS-8001 adapter to the PC, if you have not already done so.
- Once Windows comes up again, the IFSYS-8001 adapter should be ready for use.

### 3 SPECIFICATIONS

SPECIFICATIONS			
<b>1</b>	<b>Regulatory</b>		
	EN55022:1994	Radiated Emissions	Class B
	EN55022:1994	Conducted Emissions	Class B
<b>2</b>	<b>Susceptibility Compliance</b>		
	EN61000-4-3:1996	Electromagnetic Field Susceptibility	1kHz AM, 80%, 3 V/m
	EN61000-4-2:1995	Electro Static Discharge	4kV Contact, 8kV Air
	EN61000-4-6:1996	Conducted RF Immunity	3 VRMS, 1kHzAM, 0%
	EN61000-4-4:1995	Electrical Fast Transient	1 kV PL, 0.5 kV SL
<b>3</b>	<b>Safety Compliance</b>		
	EN 60950	Note: PCB material to meet and indicate UL 94V0 flammability rating.	
<b>4</b>	<b>Environmental Conditions</b>		
	Temperature (Operating)	0°C to +40°C	
	Temperature (Storage)	-20°C to +70°C	
	Humidity (Operating)	10% to 80% RH	
	Humidity (Storage)	5% to 91% RH	
<b>5</b>	<b>Dimensions &amp; Weight</b>		
	Dimensions	48.8mm(W) x 62.2mm(L) x 33.7mm(H)	(excluding cable)
	Cable length	1.5m	
	Weight	110 gms (approximately)	

## 4 SUPPORT

---

Please visit iFoundry's website at [www.ifoundrysys.com](http://www.ifoundrysys.com) for information updates. Technical support, knowledge base, and updated drivers can be obtained at this site.

## 5 FCC STATEMENT

---

This device has been tested and found to comply with the limits for a Class B digital device, pursuant to Part 15 of the FCC Rules. These limits are designed to provide reasonable protection against harmful interference in a residential installation. This device generates, uses and can radiate radio frequency energy and, if not installed and used in accordance with the instructions, may cause harmful interference to radio communications. However, there is no guarantee that interference will not occur in a particular installation. If this device does cause harmful interference to radio or television reception, the user is encouraged to correct the interference by one or more of the following measures:

- Reorient or relocate the receiving antenna.
- Connect the computer into an outlet on a circuit different from that to which the receiver is connected.
- Increase the separation between the computer and receiver.
- Consult the dealer or an experienced radio/TV technician for help.

## 6 LIMITED WARRANTY STATEMENT

---

iFoundry Systems warrants that this products is new or has been remanufactured to meet new standards using new or serviceable used parts. iFoundry Systems makes no other warranty, either expressed or implied, with respect to this product. iFoundry Systems specifically disclaims the implied warranties of merchantability and fitness for a particular purpose. Some states or provinces do not allow limitations on how long an implied warranty lasts, so the above limitation or exclusion may not apply to you.

The remedies provided herein are customer's sole and exclusive remedies. In no event shall iFoundry Systems be liable for any lost profits, direct, indirect, special, incidental, or consequential damages, whether based on contract, tort, or any other legal theory.

P/N: MDMA01198

Doc. Rev: 030701

**This page is intentionally left blank**

**This page is intentionally left blank**