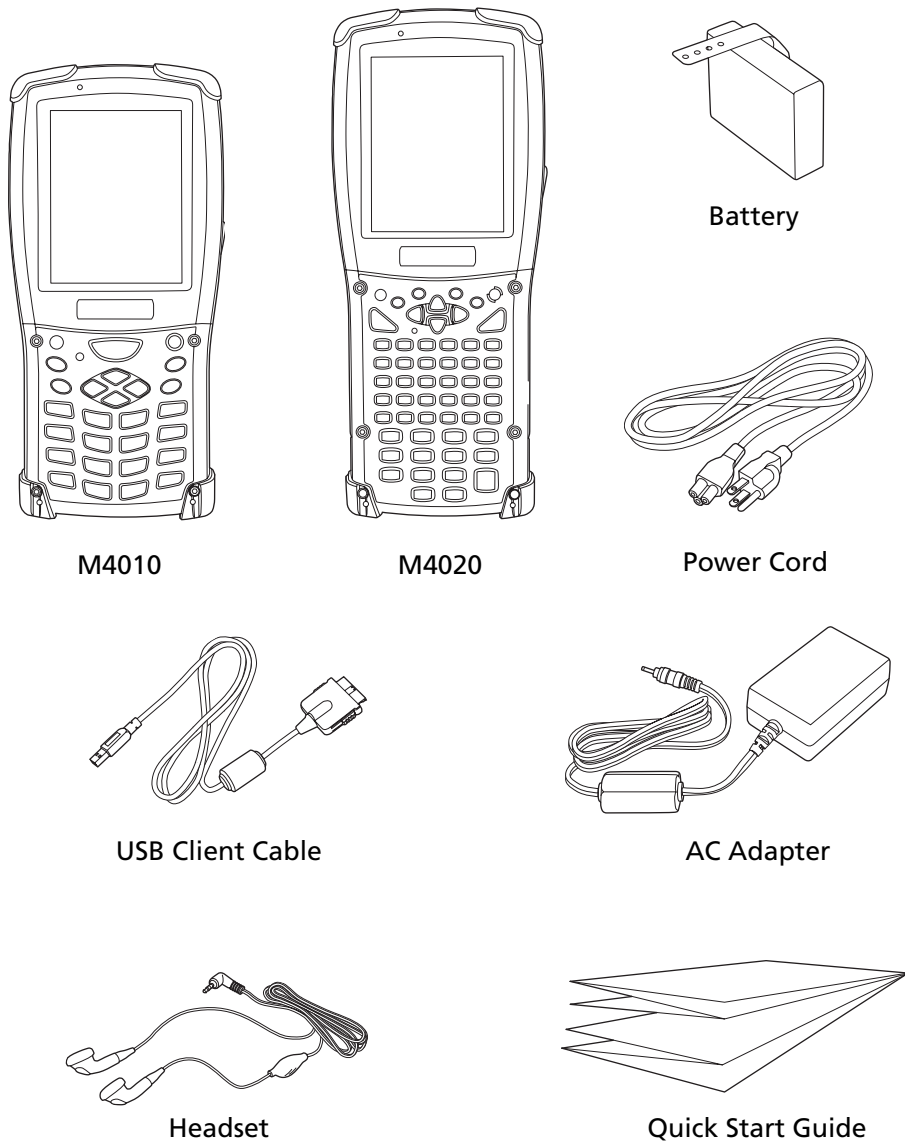
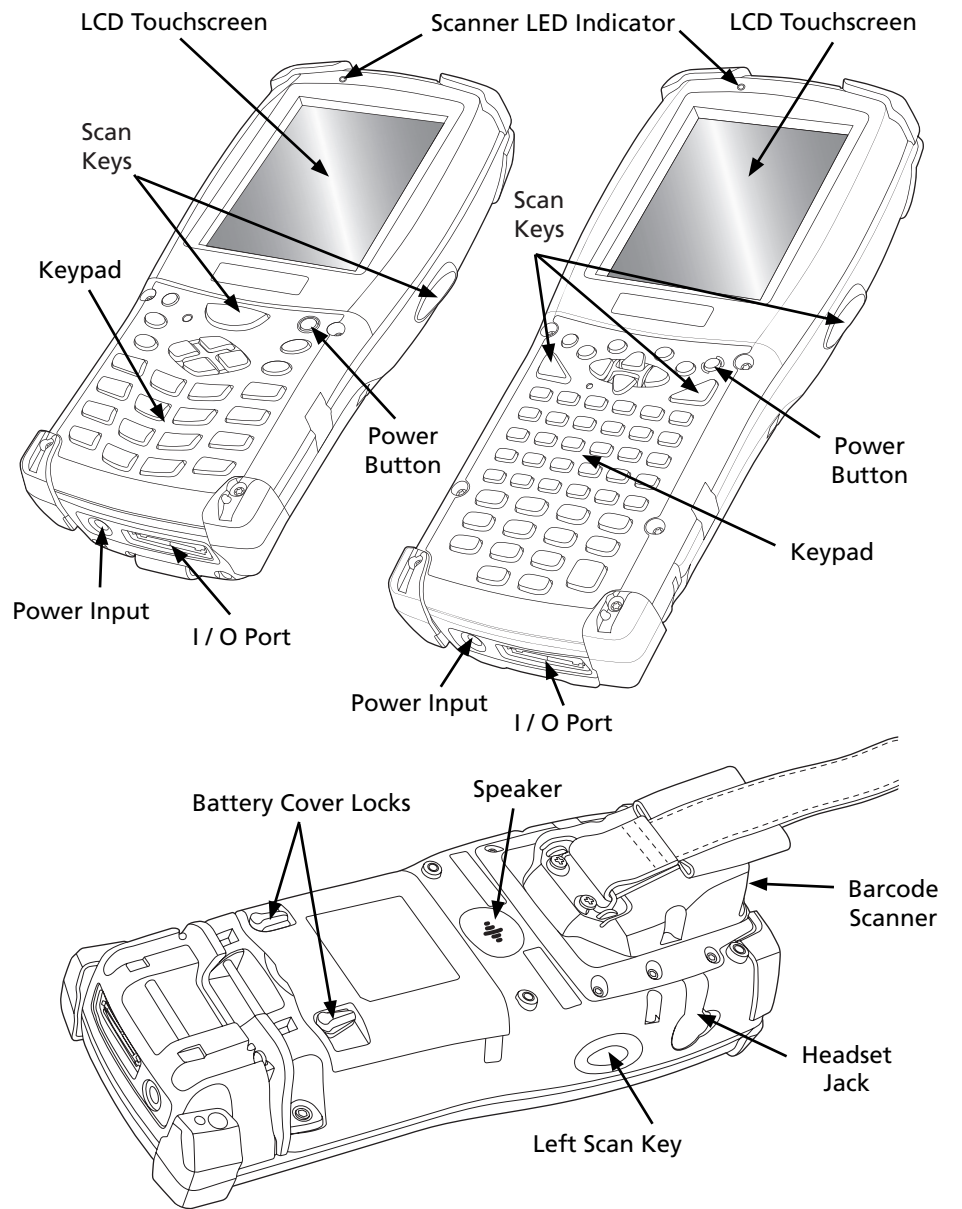


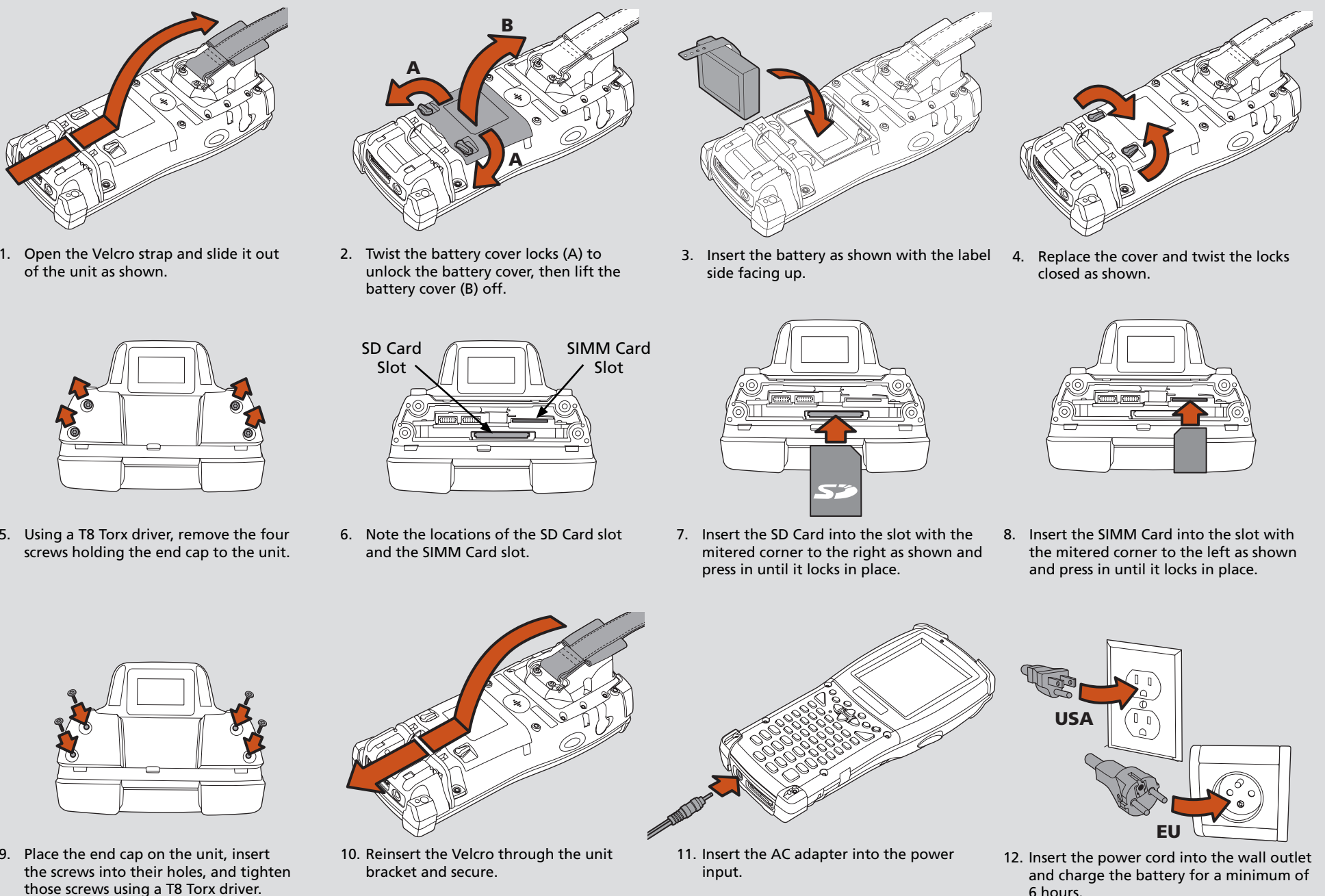
### Contents



### Overview



### Installing Memory Cards & the Battery



### Initial Set Up

- Once the unit is plugged in and charging, the initial boot screen will display briefly showing the DAP logo and a message stating that it is **loading the OS, please wait...**  
**IMPORTANT:** Do not remove the power supply from the unit until the 6-hour charging period is complete.
- Once the OS has loaded, a window will appear asking if you want to **Enable Wireless LAN?**
- If you select **NO**, the desktop will appear. If you select **YES**, the **Summit Client Utility** window will open. This will allow you to configure your wireless LAN connection.
- When you are finished with the **Summit Client Utility**, quit the application by clicking the **X** in the upper right corner of the window, then let the unit finish charging.

### Entering Data

There are three methods for entering data into the M2020: the on-screen keyboard, the transcriber, and bar code scanning.

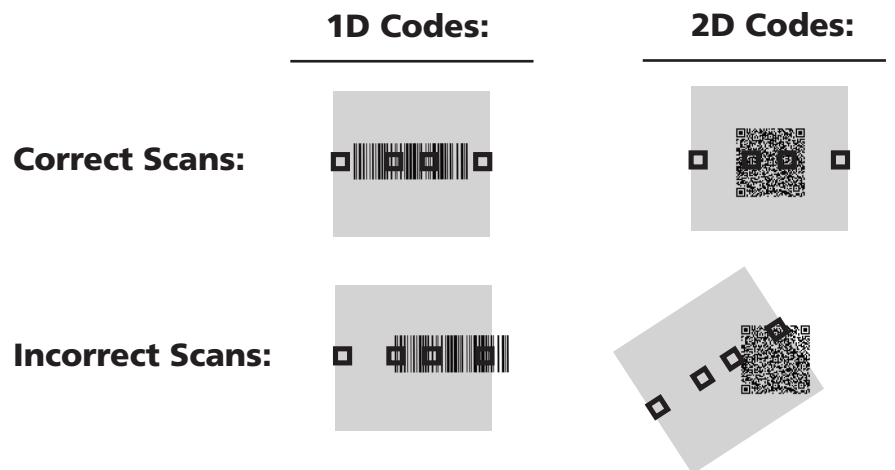
- To use the **ON-SCREEN KEYBOARD**, tap the "Stylus" icon second from the right on the task bar at the bottom of the screen and select "Keyboard" from the pop-up menu. The keyboard will appear and you can enter data using the stylus.
- To use the **TRANSCRIBER** to enter data, tap the "Stylus" icon second from the right on the task bar at the bottom of the screen and select "Transcriber" from the pop-up menu. A window will appear instructing you to calibrate your handwriting.
- To enter data using the **BAR CODE SCANNER**, launch your scanning application and follow the instructions provided below.

### 1D Laser Bar Code Scanner



**NOTE:** The laser must cross every bar for the scanner to read the code.

### 2D Imager Bar Code Scanner



**NOTE:** Each bar code must be completely within the red box and no more than eight (8) inches from the code for the 2D imager to be able to interpret the code.

### Accessories

The following accessories are available for your unit:

