

1166/1266 Bluetooth Wireless Scanners

User's Manual

WARNING

This equipment has been tested and found to comply with the limits for a digital device, pursuant to Part 15 of FCC Rules. These limits are designed to provide reasonable protection against harmful interference in a residential installation. This equipment generates, uses and can radiate radio frequency energy and, if not installed and used in accordance with the instructions, may cause interference to radio communications. However, there is no guarantee that interference will not occur in a particular installation. If this equipment does cause harmful interference to radio or television reception, which can be determined by turning the equipment off and on, the user is encouraged to try to correct the interference by one or more of the following measures:

- Reorient or relocate the receiving antenna.
- Increase the separation between the equipment and receiver.
- Connect the equipment into an outlet on a circuit different from that to which the receiver is connected.
- Consult the dealer or an experienced radio/TV technician for help.

If applicable, as below

FCC Caution: To assure continued compliance, (example – use only shielded interface cables when connecting to computer or peripheral devices). Any changes or modifications not expressly approved by the party responsible for compliance could void the user's authority to operate this equipment.

This transmitter must not be co-located or operating in conjunction with another antenna or transmitter.

FCC Radiation Exposure Statement

This equipment complies with FCC radiation exposure limits set forth for an uncontrolled environment. This equipment should be installed and operated with a minimum distance 20 cm between the radiator & your body.

This device complies with Part 15 of the FCC Rules. Operation is subject to the following two conditions: (1) This device may not cause harmful interference, and (2) this device must accept any interference received, including interference that may cause undesired operation.

Document Number: 1X66-1

Release Date: Dec. 2005

© 2005, SYNTECH INFORMATION Co., Ltd..

All rights reserved. CipherLab is a registered trademark of SYNTECH INFORMATION Co., Ltd.

Table of Contents

| | |
|-----------------------------------------------------|-----------|
| REVISION HISTORY | 1 |
| 1. INTRODUCTION | 2 |
| 2. 3666 INSTALLATION | 3 |
| 2.1 POWER UP THE 3666 BASE STATION | 3 |
| 2.2 POWER UP THE 1166/1266..... | 4 |
| 2.3 SETUP RF CONNECTION..... | 4 |
| 2.4 CHARGING YOUR 1166/1266..... | 5 |
| 2.4.1 Scanner | 5 |
| 2.4.2 Battery | 5 |
| 2.4.3 DC Jack | 6 |
| 2.5 INTERFACE SETTING..... | 6 |
| 3. GENERAL FEATURES..... | 7 |
| 3.1 BUZZER | 7 |
| 3.2 INDICATOR..... | 7 |
| 3.3 SCAN MODES..... | 7 |
| 3.4 AUTO-SENSE..... | 8 |
| 3.5 RE-READ DELAY | 9 |
| 3.6 SCANNER TIME-OUT DURATION | 9 |
| 3.7 READING REDUNDANCY | 9 |
| 3.8 SUPPORTED SYMBOLOGIES..... | 9 |
| 3.9 NEGATIVE BARCODES | 10 |
| 4. OUTPUT INTERFACE (3666 BASE UNIT) | 11 |
| 4.1 KEYBOARD WEDGE INTERFACE..... | 11 |
| 4.1.1 Keyboard Type | 11 |
| 4.1.2 Keyboard Style - Alphabets..... | 11 |
| 4.1.3 Keyboard Style – Digits | 11 |
| 4.1.4 Capital Lock Status | 12 |
| 4.1.5 Alphabets Transmission..... | 12 |
| 4.1.6 Digits Transmission | 12 |
| 4.1.7 Inter-Character Delay | 12 |
| 4.2 RS232 INTERFACE..... | 13 |
| 4.2.1 Baud Rate / Parity / Data Bits..... | 13 |
| 4.2.2 Flow Control | 13 |
| 4.2.3 Inter-Character Delay | 13 |
| 4.3 USB INTERFACE | 13 |
| 4.4 MEMORY PARAMETERS..... | |
| 4.4.1 Transmit Buffer Setting | |
| 4.4.2 Memory Mode..... | |
| 4.4.3 Clear Data | |
| 4.4.4 Send Data | |
| 4.4.5 Memory Data Delay..... | |
| 5. BLUETOOTH SERIAL PORT..... | |
| 5.1 CONFIGURING 1166/1266..... | |
| 5.1.1 Activate Bluetooth Serial Port Interface..... | |
| 5.1.2 Authentication & PIN Code | |
| 5.1.3 Device Name Broadcasting | |
| 5.1.4 Update Settings..... | |
| 5.1.5 Timeout..... | |
| 5.2 CONFIGURING BLUETOOTH DEVICE DRIVER | |
| 5.2.1 Windows XP with Service Pack2 | |
| 5.2.2 Belkin Bluetooth Driver | |
| 6. BLUETOOTH HID | |
| 6.1 CONFIGURING 1166/1266..... | |
| 6.1.1 Activate Bluetooth HID Interface | |
| 6.1.2 Reset Connection | |
| 6.1.3 Authentication & PIN Code | |
| 6.1.4 Device Name Broadcasting | |
| 6.1.5 Update Settings..... | |
| 6.2 HID KEYBOARD INTERFACE..... | |
| 6.2.1 Keyboard Type..... | |
| 6.2.2 Keyboard Style - Alphabets..... | |
| 6.2.3 Keyboard Style – Digits | |
| 6.2.4 Capital Lock Status | |
| 6.2.5 Alphabets Transmission..... | |
| 6.2.6 Digits Transmission | |
| 6.3 CONFIGURING BLUETOOTH DEVICE DRIVER | |
| 6.3.1 Windows XP with Service Pack2 | |
| 6.3.2 Widcomm Bluetooth Driver | |
| 7. SYMBOLOGY PARAMETERS..... | |
| 7.1 CODE39..... | |
| 7.2 ITALY / FRENCH PHARMACODE | |
| 7.3 INDUSTRIAL / INTERLEAVE / MATRIX 25 | |
| 7.4 CODABAR..... | |
| 7.5 UPCE..... | |

| | | |
|------------|------------------------------------------|-----------|
| 7.6 | EAN8 | 33 |
| 7.7 | UPCA..... | 33 |
| 7.8 | EAN13 | 33 |
| 7.9 | MSI | 34 |
| 7.10 | PLESSEY | 34 |
| 7.11 | TELEPEN..... | 34 |
| 7.12 | RSS | 35 |
| 8. | DATA OUTPUT FORMAT | 36 |
| 8.1 | CHARACTER SUBSTITUTION | 36 |
| 8.2 | PREFIX / POSTFIX CODE | 36 |
| 8.3 | CODE ID..... | 36 |
| 8.4 | LENGTH CODE..... | 37 |
| 9. | DATA EDITING..... | 38 |
| 9.1 | SELECT EDITING FORMAT | 38 |
| 9.2 | RESTORE DEFAULT FORMAT | 38 |
| 9.3 | APPLICABLE CONDITIONS | 39 |
| 9.4 | TOTAL NUMBER OF FIELDS..... | 39 |
| 9.5 | DIVIDING DATA INTO FIELDS | 39 |
| 9.6 | ADDITIONAL FIELDS..... | 40 |
| 9.7 | FIELD TRANSMISSION SEQUENCE | 40 |
| 9.8 | END OF FORMAT PROGRAMMING | 40 |
| 9.9 | ACTIVATE DATA EDITING FORMATS..... | 40 |
| 9.10 | EXCLUSIVE DATA EDITING | 41 |
| 9.11 | PROGRAMMING EXAMPLES..... | 41 |
| 10. | CONFIGURING YOUR 1166/1266..... | 42 |
| 10.1 | ENTER CONFIGURATION MODE | 42 |
| 10.2 | DEFAULT | 42 |
| 10.3 | LIST SETTING | 42 |
| 10.4 | SETTING PARAMETER VALUES..... | 43 |
| 10.4.1 | <i>Numeric Parameters</i> | <i>43</i> |
| 10.4.2 | <i>Character String Parameters</i> | <i>43</i> |
| 10.4.3 | <i>Key Type/Status Setting</i> | <i>44</i> |
| 10.5 | EXIT CONFIGURATION MODE | 45 |

Revision History

| Version | Release Date | Notes |
|----------------|---------------------|-----------------------------------------------------------------------------------------------------------------------------------------------------------------------------------------------------------------------------------------------------------------------|
| V 1.00 | Oct. 31, 2005 | First release. |
| V 2.00 | Dec. 30, 2005 | Supports Bluetooth HID. Firmware version : V4.10. |
| V2.10 | Jan.18, 2006 | Updated: λ Bluetooth HID doesn't support the following functions on PDA for Win CE. v Capital Lock Setting: Auto Detection v Digit Transmission: Numeric Key v Alt Composing λ HID Keyboard Interface information is added. Firmware version: V4.20 |
| | | |
| | | |
| | | |

1. Introduction

The 1166/1266 is CipherLab Wireless scanner utilizing Bluetooth Technology. The scanner has a range of over 50 meters and a battery life is over 50 hours. It can scan for 1166 and over 36 hours or 26,000 scans for 1266. The difference between 1166 and 1266 is the barcode scan engine installed inside the scanner. The 1166 scanner uses CCD linear imager, whereas the 1266 scanner uses a Laser engine. This manual contains the information for operating and configuring the 1166/1266 Wireless Barcode Scanner and is divided into two portions. The first portion describes the installation, operation and programmable features of the scanner. The second portion contains the setup barcodes used to configure the scanner.

The 1166/1266 is one of the most versatile and flexible wireless barcode scanners available today. The 1166/1266 contains all the features and functions required for up to date barcode reading. Owing to the compact design and extremely low power consumption, this scanner provides for easy installation and high durability. The scanner will not only satisfy for the requirements needed today but also can fulfill your long-term needs. The main functions and features are listed below.

- Barcode Readability: Most popular barcode symbologies are supported including the newest RSS Code.
- Negative barcodes supported.
- Eight scan modes supported.
- Programmable Beeping Tone
- Dual Color Indicator
- Interface Support (base unit): KB Wedge, RS232, and USB
- Bluetooth Serial Port Profile Supported: The scanner can transmit scanned data to a Bluetooth enabled computer/PDA via standard Bluetooth Serial Port communication.
- Bluetooth HID Supported: The scanner can transmit scanned data to a Bluetooth enabled computer/PDA via standard HID communication.
- Programmable Code ID: Code ID can be individually configured for each symbology.
- Programmable Length Code
- Programmable Prefix Code
- Programmable Postfix Code
- Character Substitution
- Data Editing: Data can be reorganized according to user programmable format. Up to three data editing formats are supported.
- Extremely Low Power Consumption

2. 3666 Installation

The 1166/1266 kit contains:

A 1166/1266 wireless barcode scanner

A 3666 base

A rechargeable battery

A Serial/Keyboard/USB Cable (depending on configuration ordered)

A power supply for the base or the scanner.

Diskette containing “Scan Manager” and this manual

Note: Please refer to chapter 5 Bluetooth Serial Port for Bluetooth Serial Port installation and configuration instructions.

2.1 Power Up the 3666 Base Station



Connect the interface cable into the 15-pin connector at the back of the base. The interface of the cable depends on you ordered. There are three types of cables available: RS232, Keyboard or USB.

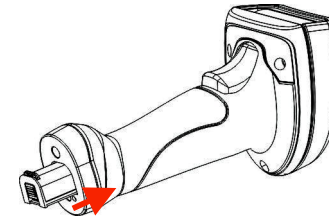
Power **off** your PC or Laptop when connect the cable to PC or Laptop. Once your cable is connected to the base, plug the other end into the appropriate port on your PC. For example, if you have a serial cable then plug into the com port of your PC, if you have a Keyboard cable then plug into keyboard port of your PC and if you have a USB cable plug into the USB port on your PC.

Connect the power supply provided to your AC outlet and plug the other end into the base then power **on** your PC.

Now you are ready to configure your scanner and base.

2.2 Power Up the 1166/1266

When you receive your 1166/1266, the battery is separated from 1166/1266 insert the battery into the bottom of the scanner and lock the battery by push clip to power on the scanner. The scanner will beep and the LED will be on power on.



Push up to lock the .

Please ensure to remove the battery to power off the scanner if it will not be for a prolonged period. The LED will be off and the power to the scanner will be disconnected.

2.3 Setup RF Connection

Upon powering up the scanner will try to establish an RF connection with the base. At this stage we need to “pair” the scanner and base.

Turn the base upside down and you will find 2 labels.

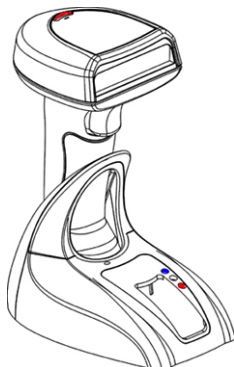
The first label has the words “SET CONNECTION” and a barcode. The second label is the serial number.

To link the scanner to the base, scan the “SET CONNECTION” barcode label. The scanner will beep once then scan the SERIAL number barcode. The scanner will beep twice, low then high beep. When it establishes RF connection with the base, the scanner will then emit three short ascending beeps. Your “pairing” is established.

2.4 Charging your 1166/1266

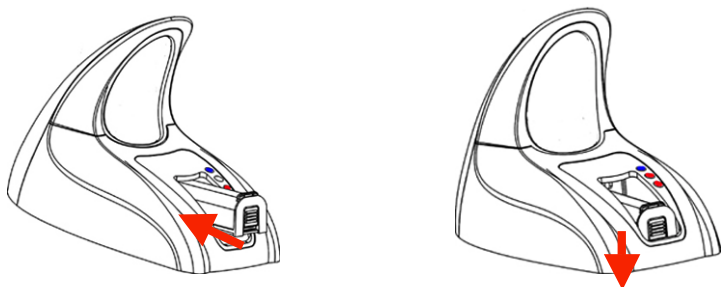
There are three methods to charge the battery. One is placing the scanner on the base and another is inserting the battery in front of the base, and the other is inserting the power supply into the DC Jack at bottom of the scanner.

2.4.1 Scanner



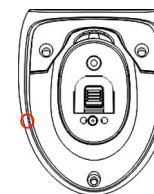
Place the scanner with a battery inserted on the base to charge your scanner. When charging, the scanner LED will flash RED. When the battery is fully charged, around 4 hours from completely empty battery, the LED stays on solid RED.

2.4.2 Battery



Insert the battery in front of the base to charge your battery with the power adaptor connected. When charging, the base charging LED will be RED. When the battery is fully charged, around 4 hours from completely empty battery, the LED will be solid GREEN.

2.4.3 DC Jack



Insert the power supply to the DC Jack at bottom of the scanner. When charging, the scanner LED will flash RED. When the battery is fully charged, around 4 hours from completely empty battery, the LED stays on solid RED.

2.5 Interface Setting

Once you have “paired” the scanner and base, you need to specify the interface to your PC. The interface settings are stored in the base. So ensure that you have an RF connection between your scanner and base prior to setting the interface. For details on selecting interfaces please refer to the relevant section in this

3. General Features

3.1 Buzzer

The buzzer of the scanner beeps differently to indicate various operating conditions.

- **Power On Beep:** The scanner will issue a long beep to indicate a successful power on.
- **Good Read Beep:** The system provides four volume levels and four beeping tones (frequencies) that the user can select from to signify a good read. The available options are:

Volume: Maximum/Loud/Medium/Minimum

Frequency: 8 / 4 / 2 / 1 kHz

- **Error Beep:** The scanner will issue a long beep with a low tone to indicate errors.
- **Enter / Exit Configuration Beep:** The scanner will issue 6 beeps upon entering / exiting the configuration mode.
- **Setup Beep:** In configuration mode, the scanner will normally beep twice when a setup barcode is read. If the particular setup parameter needs more than one read, the scanner will only issue a short beep to indicate that there are more setup barcodes needed to complete the current parameter setting.

3.2 Indicator

There is a dual color indicator on top of the scanner. Normally it is off, and will turn red when there is a good read. The indicator will be blue when the scanner is at configuration mode.

3.3 Scan Modes

There are eight scan modes supported by the scanner. The user can choose the desired scan mode depending on the application requirements. But, if the scanner is a trigger-less scanner, only continuous mode or testing mode can be selected (other scan modes involve trigger switch interaction). The supported scan modes are described below.

- **Auto Off Mode:** The scanner will start scanning once the switch is triggered. The scanning continues until either a barcode is read or a preset scanning period (*Scanner Time-Out Duration*) is expired.

- **Continuous Mode:** The scanner is always scanning.
- **Auto Power Off Mode:** The scanner will start scanning once the trigger is triggered. The scanning continues until a preset scanning period (*Time-Out Duration*) is expired. Unlike the Auto Off mode, the scanner continues to scan and the scanning period is re-counted each time a successful read.
- **Alternate Mode:** The scanner will start scanning once the switch is triggered. The scanner will continue scanning until the switch is again.
- **Momentary Mode:** The scanner will be scanning as long as the trigger is depressed.
- **Repeat Mode:** The scanner is always scanning just like Continuous Mode. But now the switch acts like a “re-transmit button”. If the switch is within 1 second after a good read, the same data will be transmitted without actually reading the barcode. This “re-transmit button” is triggered as many times as user desired, as long as the time between triggering does not exceed 1 second. This scan mode is most useful when the same barcode is to be read many times.
- **Laser Mode:** This scan mode is used on laser scanners. The scanner scans once when the trigger is pressed. The scanning continues until a barcode is read, the trigger is released or a preset scanning period (*Time-Out Duration*) is expired.
- **Test Mode:** The scanner is always scanning. The scanner will scan repeatedly even with the same barcode.

By default, the scan mode is Auto Off mode for scanners with trigger switch and Continuous mode for switch-less scanners.

3.4 Auto-Sense

Auto-Sense is for 1166 only and used in conjunction with the auto-sense switch. It will enable the scanner to start scanning once a barcode is brought within the field of view of the scanner. This will activate the LEDs and the scanner will start decoding the barcode. The auto-sense mode works only under Auto Off mode or Laser mode only.

3.5 Re-read Delay

If the scanner mode is set to *Continuous*, *Auto Power Off*, *Alternate*, or *Momentary* mode, the scanner will prevent accidentally reading the same barcode twice by using a *Re-read Delay (Blocking Time)*. The barcode must be taken away from the scanning line longer than the *Re-read Delay* to allow second reading of the same barcode. The user can set the *Re-read Delay* if necessary.

3.6 Scanner Time-out Duration

This parameter is used to limit the maximum scanning period when the scan mode is either *Auto Off Mode* or *Auto Power Off Mode*. This time-out duration is specified in units of second. The default time-out duration is ten seconds.

3.7 Reading Redundancy

This parameter is used to specify the levels of reading (decoding) security. If *No Redundancy* is selected, only one successful decoding can make the reading valid. If *Three Times Redundancy* is selected, it will take 3 successful decodes to make the reading valid. It is obvious that the more redundancy the user selects, the higher the reading security and thus the slower the reading speed. The user must compromise between decoding security and decoding speed if the security feature is needed.

3.8 Supported Symbolologies

Most of the popular barcode symbolologies are supported. Each symbology can be individually enabled or disabled. The scanner will automatically discriminate and recognize all the symbolologies that are enabled. The supported barcode symbolologies are listed below.

- Code 39 (Standard / Full ASCII)
- Italy Pharmacode
- French Pharmacode
- Industrial 25
- Interleave 25
- Matrix 25
- Codabar (NW-7)
- UPCA (with or without Addon)
- UPCE (with or without Addon)
- EAN8 (with or without Addon)

- EAN13 (with or without Addon)
- Code 93
- Code 128
- EAN 128
- MSI
- Telepen
- Plessey

3.9 Negative Barcodes

The scanner can be configured to read negative barcodes. Normally, bar printed with the color of the bars darker than that of the spaces. But for barcodes, they are printed in the opposite sense just like negative films. The negative barcodes are printed with a color darker than that of the bars.

4. Output Interface (3666 Base Unit)

The 1166/1266 is a multi-interface scanner. It can be used as a keyboard wedge scanner, an RS-232 scanner, or a USB scanner. The output interface can be programmed using the setup barcodes in this manual.

Please ensure that you have an RF connection between the scanner and the base prior to selecting the interface type.

4.1 Keyboard Wedge Interface

4.1.1 Keyboard Type

The keyboard wedge interface is enabled by configuring/selecting keyboard type. The supported keyboard types are listed below.

- PCAT - US, French German, Italian, Swedish, Norwegian, UK, Belgium, Spanish, and Portuguese KBD
- PS2-30
- IBM 3477 TYPE (Japanese KBD)
- IBM 34XX, 319X & Memorex Telex (122Keys)

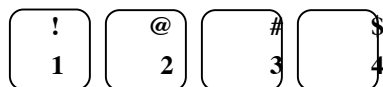
4.1.2 Keyboard Style - Alphabets

Keyboard layout style can be selected. There are three options to this setting: default layout (US or English style), AZERTY layout, and QWERTZ layout. This setting only works when the keyboard type selected is for US keyboard. The scanner will make necessary adjustment when sending the 'A', 'Q', 'W', 'Z', 'Y', and 'M' character according to this setting.

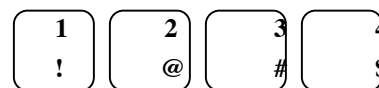
4.1.3 Keyboard Style - Digits

There are two digit layout styles as shown on the following figures. One has digit on top (upper row) of a key and another has digits on bottom (lower row) of a key.

The digit layout style can be changed by the following configuration settings. There are three options: **Default**, **Lower Row**, and **Upper Row**. The scanner will make necessary adjustment when sending digits according to the setting value of this parameter. This setting is used with the above setting (Keyboard Style – Alphabets) and perhaps Character Substitution setting, when support to languages not available on the scanner is needed.



Digits on Lower Row



Digits on Upper Row

4.1.4 Capital Lock Status

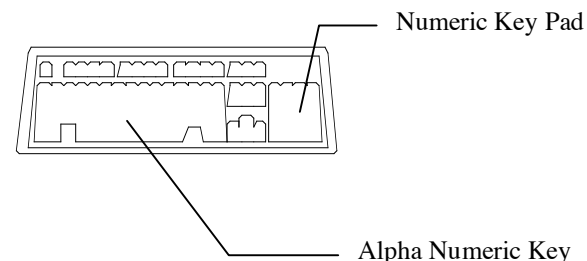
In order to send alphabets with correct case, the scanner needs to know the lock status of the keyboard. Incorrect settings may result in reversed alphabets being transmitted. There are 3 options to this parameter: *On*, *Off*, *Detection*. If this parameter is set to *Auto Detection*, the scanner will automatically detect the capital lock status of the keyboard before it transmits data.

4.1.5 Alphabets Transmission

User can choose how alphabets are sent by this parameter configuration. Alphabets can be sent according to their case (the *Case Sensitive* option), or is ignored (the *Ignore Case* option) when transmitting.

4.1.6 Digits Transmission

User can choose how the scanner transmits digits by configuring this parameter. The scanner can transmit digits by using the alphanumeric key or by using the numeric keypad. The Num Lock status of the keyboard should be ON if the keypad option is selected.



4.1.7 Inter-Character Delay

An inter-character delay of 0 to 255 ms can be configured to match the response time of the keyboard interface. The delay time configured is between transmitting every character. The longer the delay time configured, the slower the transmission speed will be. The inter-character delay is zero by default.

4.2 RS232 Interface

User can select the desired, flow control, baud rate, parity, and data bits to be used in this output interface.

4.2.1 Baud Rate / Parity / Data Bits

The supported baud rate, parity, and data bit are listed below.

- Baud Rate: 115200 / 38400 / 19200 / 9600 / 4800 / 2400 / 1200 / 600
- Parity: None / Even / Odd
- Data bit: 8 / 7

4.2.2 Flow Control

The user can further configure the flow (handshake) control method to be used. The available options are listed below.

- No Flow Control
- Scanner Ready: The scanner will activate the RTS signal after power on. After each good read the scanner waits for an active CTS signal. The data will not be sent until CTS signal becomes active.
- Data Ready: The RTS signal will be activated after each good read. The scanner will then wait for the CTS signal becomes active. The data will not be sent until CTS signal becomes active.
- Inverted Data Ready: It is like the *Data Ready* flow control, but the RTS signal level is inverted.

4.2.3 Inter-Character Delay

An inter-character delay of 0 to 255 ms can be configured to match the computer response time. The delay time configured is inserted between transmitting every character. The longer the delay time configured, the slower the transmission speed will be. The inter-character delay is zero by default.

4.3 USB Interface

A USB interface is also available. For installation instructions please refer to the separate diskette included with your scanner.

4.4 Memory Parameters

The 1166/1266 reserves 4 KB flash memory as transmit buffer when the scanner is out of service range. Data will be saved into the reserved buffer when the scanner is

out of signal range and data will be transmitted to server when the scanner is back in the service range.

The 1166/1266 can work offline and store the reading data into the internal memory for later upload to the host. The stored data can be up to 128Kbyte.

4.4.1 Transmit Buffer Setting

Please enable the transmit buffer by scanning the transmit buffer setting ENAB label. Disable the manual memory function by scanning the DISABLE transmit buffer setting.

4.4.2 Memory Mode

Please enable the manual memory function by scanning the memory mode ENABLE label. Disable the manual memory function by scanning the memory mode label.

4.4.3 Clear Data

The CLEAR label will enable the user to CLEAR or ERASE the data in the scanner's memory. The user must also scan the CONFIRM label immediately after the CLEAR label.

4.4.4 Send Data

This enables the user to transmit the data in the scanner's memory to the host interface selected by the user will be used for the transmission. During transmission the red LED of 1166/1266 will be flashing.

4.4.5 Memory Data Delay

This will enable the user to set a delay between each data record in memory of transmission.

5. Bluetooth Serial Port

The 1166/1266 can be configured to the standard Bluetooth Serial Port as the data output interface. This will make the 1166/1266 send the scanned barcode data to Bluetooth enabled computer or PDA directly without the 3666 base unit (however, a charging dock is still needed for charging the 1166/1266 battery).

This section illustrates a step-by-step installation and configuration procedures of the 1166/1266 for Bluetooth Serial Port. Bluetooth transceivers/dongles always come with their own driver or Windows XP with service pack2 provides the build-in Bluetooth driver. There are several Bluetooth device drivers for Windows and WinCE/Pocket PC from different companies. Here we use Window XP with service pack2 build-in Bluetooth driver and BELKIN driver as examples. For detail installation procedures, please refer to the user's manual of the Bluetooth transceiver in use.

5.1 Configuring 1166/1266

Before starting the configuration, the scanner must be powered up. If you have not done so, please follow the procedures described in section 2.2 "Power Up the 1166/1266" to power up the scanner.

First step of the configuration is always to put the scanner in configuration mode by scanning the "Enter Setup" barcode. After all the desired configurations are done, the "Update" barcode must be scanned to save the new settings and put the scanner back to normal operation mode.

5.1.1 Activate Bluetooth Serial Port Interface

Scan the "Activate Bluetooth Serial Port" barcode will change the interface type to Bluetooth Serial Port.

5.1.2 Authentication & PIN Code

The 1166/1266 can do connection authentication if communication security is desired. Once this setting is enabled, a user configurable PIN code is verified during connection establishment. The scanner will refuse connection if the PIN code is incorrect. User can specify up to six characters of PIN code.

5.1.3 Device Name Broadcasting

The scanner can be configured to hide itself by NOT broadcasting itself on the air. This can avoid unwanted computer/PDA from connecting to the scanner. But for

the initial (first time) connection setup, this setting must be enabled. User disable this setting for security reasons after initial connection setup is complete.

5.1.4 Update Settings

After all the desired settings are completed, the "Update" barcode must be scanned to make the new settings effective. The scanner will re-start itself after "Update" barcode is scanned.

5.1.5 Timeout

The scanner will stay active only for one minute waiting for connection. If no connection request during that period, the scanner will go to power down mode to conserve power with three serial descending tones as indication. User can make the scanner go back to active mode by pulling the trigger. And again, the scanner will stay active for another one minute waiting for connection before it goes to power down mode again. **Once there is a successful connection, the scanner will stay active until the connection is closed (when the host application closes the COM port).** After the connection is closed, the scanner will again wait for connection request for one minute before it goes to power down mode.

5.2 Configuring Bluetooth Device Driver

Please follow the procedures below to configure the Bluetooth driver on the system. Please note that, when searching nearby Bluetooth devices on Host computers, the 1166/1266 will come out with the serial number as their device name. Please check the serial number label on the scanner when making connections.

5.2.1 Windows XP with Service Pack2

1. Insert the Bluetooth dongle into PC host.

2. Double click the Bluetooth icon  on the lower right of the taskbar.

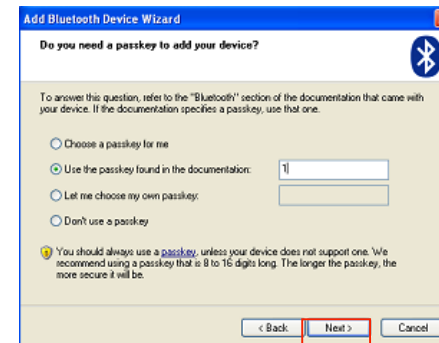
3. Check *My device is set up and ready to be found* and click **Next** button.



4. Select 1x66 scanner and click **Next** button for next step.



6. Enter the PIN code and click **Next** button for next step. The authentication PIN code is always asked from the Window XP built-in driver, so the user has to set 1x66 scanner with Authentication and PIN code. In this case, 1 is the passkey.

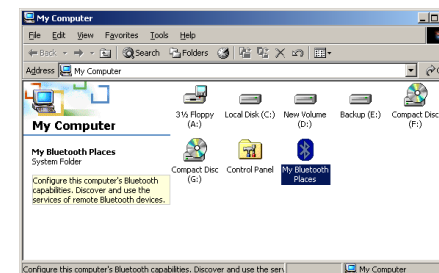


7. The serial ports are assigned to the device, outgoing COM 10 and Incom COM 11. Click the Finish button to complete the configuration.

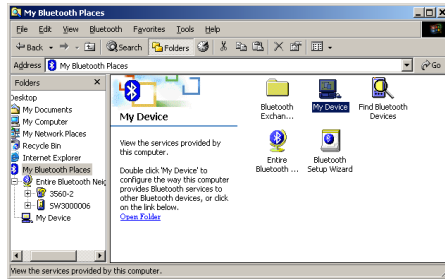


5.2.2 Belkin Bluetooth Driver

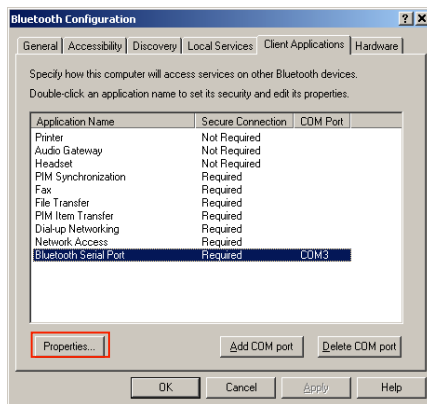
1. Click Go to *My Computer*.



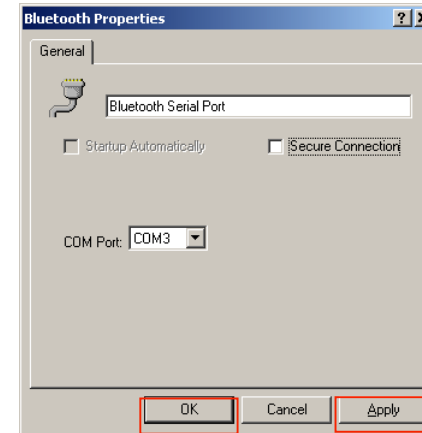
2. Double click the *My Bluetooth Places* at left Folders window. Right cli *Device* and select *Property*.



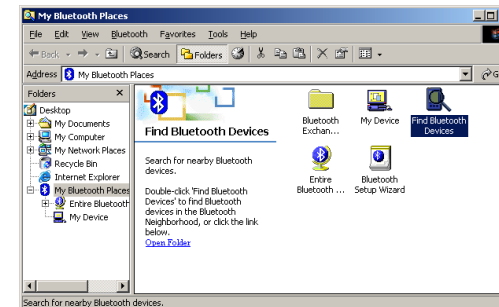
3. Select **Client Applications** tab and select **Bluetooth Serial Port** from the list then click **Property** button.



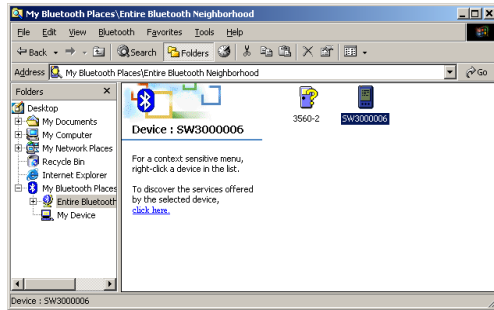
4. Check **Secure Connection** if you enable the Authentication and have configured a PIN Code on 1x66. Otherwise uncheck **Secure Connection**. Click **Apply** and **OK** button.



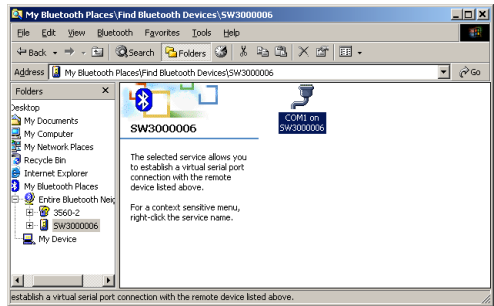
5. Wake up 1166/1266 by pulling the trigger (just in case it falls asleep). Double click **Find Bluetooth Devices**.



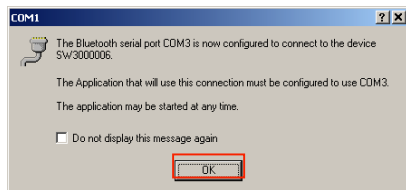
6. Double click 1x66 scanner.



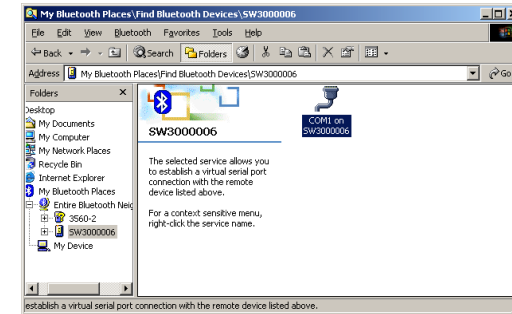
7. Double click on the service, **COM1**, which is the Bluetooth Serial Port service. This will enable the connecting process. If Authentication (Secure Connection) is enabled, another window might pop up and asking for PIN code.



8. Click **OK** button. After successful connection, the Bluetooth Device Driver will report the COM port number, which is mapped for this connection. In this case, it is COM3. You can also hear three serial ascending tones from the scanner indicating successful connection. After this initial connection, whenever an application program opens COM3, the Bluetooth driver will automatically try to connect this particular scanner.



9. Right click the **COM1** and select **Disconnect** to close the connection. There will be three serial descending tones from the scanner to indicate this connection is closed. After the connection is closed, the 1x66 scanner and the Bluetooth driver properly configured and are ready to go. User can now run their application "Hyper Terminal" for testing, and make the best use of this scanner.



6. Bluetooth HID

The 1x66 scanner can be configured to the standard Bluetooth HID as data output interface. This will make the 1x66 scanner sends the scanned barcode data to Bluetooth enabled computer or PDA directly without the 3666 base unit (however, a charging dock is still needed for charging the 1x66 battery).

This section illustrates a step-by-step installation and configuration procedures of the 1x66 for Bluetooth HID. Bluetooth transceivers/dongles always come with their own driver or Windows XP with service pack2 provides the build-in Bluetooth driver. There are several Bluetooth device drivers for Windows and WinCE/Pocket PC from different companies. Here we use Window XP with service pack2 build-in Bluetooth driver and WIDCOMM driver as examples. For detail installation procedures, please refer to the user's manual of the Bluetooth transceiver in use.

NOTE: Bluetooth HID doesn't support the following functions on PDA:

- √ Capital Lock Setting: Auto Detection
- √ Digit Transmission: Numeric Key
- √ Alt Composing

6.1 Configuring 1166/1266

Before starting the configuration, the scanner must be powered up. If you have not done so, please follow the procedures described in section 2.2 "Power Up the 1166/1266" to power up the scanner.

First step of the configuration is always to put the scanner in configuration mode by scanning the "Enter Setup" barcode. After all the desired configurations are done, the "Update" barcode must be scanned to save the new settings and put the scanner back to normal operation mode.

6.1.1 Activate Bluetooth HID Interface

The HID keyboard interface is enabled by configuring/selecting the HID keyboard type. The supported HID keyboard types are listed below: US, French German, Italian, Swedish, Norwegian, UK, Belgium, Spanish, and Portuguese KBD.

6.1.2 Reset Connection

Scan the "Reset Connection" when switch connection from one PC to another PC. The scanner will re-start itself after this barcode is read.

6.1.3 Authentication & PIN Code

The 1x66 scanner can do connection authentication if communication security is desired. Once this setting is enabled, a user configurable PIN code is verified for connection establishment. The scanner will refuse connection if the PIN code is incorrect. User can specify up to six characters of PIN code.

6.1.4 Device Name Broadcasting

The scanner can be configured to hide itself by NOT broadcasting itself on the network. This can avoid unwanted computer/PDA from connecting to the scanner. Before the initial (first time) connection setup, this setting must be enabled. User can disable this setting for security reasons after initial connection setup is complete.

6.1.5 Update Settings

After all the desired settings are completed, the "Update" barcode must be scanned to make the new settings effective. The scanner will re-start itself after "Update" barcode is scanned.

6.2 HID Keyboard Interface

6.2.1 Keyboard Type

The HID keyboard interface is enabled by configuring/selecting keyboard type. The supported keyboard types are listed below.

- PCAT - US, French German, Italian, Swedish, Norwegian, UK, Belgium, Spanish, and Portuguese KBD

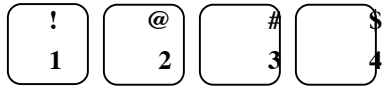
6.2.2 Keyboard Style - Alphabets

Keyboard layout style can be selected. There are three options to this setting: default layout (US or English style), AZERTY layout, and QWERTZ layout. The AZERTY setting only works when the keyboard type selected is for US keyboard. The scanner will make necessary adjustment when sending the 'A', 'Q', 'W', 'E', and 'M' character according to this setting.

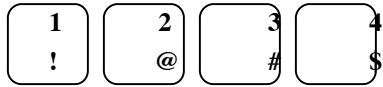
6.2.3 Keyboard Style - Digits

There are two digit layout styles as shown on the following figures. One has digits on top (upper row) of a key and another has digits on bottom (lower row) of a key. The digit layout style can be changed by the following configuration. There are three options: **Default**, **Lower Row**, and **Upper Row**. The scanner will make necessary adjustment when sending digits according to the setting.

this parameter. This setting is used with the above setting (Keyboard Style – Alphabets) and perhaps Character Substitution setting, when support to languages not available on the scanner is needed.



Digits on Lower Row



Digits on Upper Row

6.2.4 Capital Lock Status

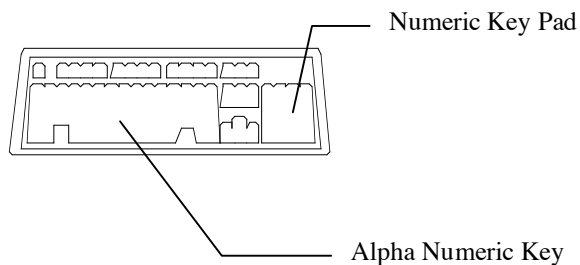
In order to send alphabets with correct case, the scanner needs to know the capital lock status of the keyboard. Incorrect settings may result in reversed case of alphabets being transmitted. There are 3 options to this parameter: *On*, *Off*, or *Auto Detection*. If this parameter is set to *Auto Detection*, the scanner will automatically detect the capital lock status of the keyboard before it transmits data.

6.2.5 Alphabets Transmission

User can choose how alphabets are sent by this parameter configuration. The alphabets can be sent according to their case (the *Case Sensitive* option), or the case is ignored (the *Ignore Case* option) when transmitting.

6.2.6 Digits Transmission

User can choose how the scanner transmits digits by configuring this parameter. The scanner can transmit digits by using the alphanumeric key or by using the numeric keypad. The Num Lock status of the keyboard should be ON if numeric keypad option is selected.



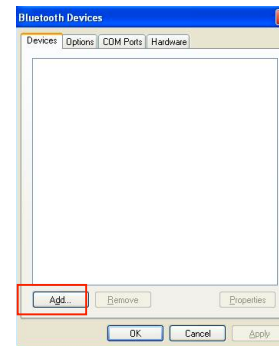
6.3 Configuring Bluetooth Device Driver

Please follow the procedures below to configure the Bluetooth driver on the system. Please note that, when searching nearby Bluetooth devices on Host computers, the 1x66 scanner will come out with the serial number as their name. Please check the serial number label on the scanner when making connections.

6.3.1 Windows XP with Service Pack2

1. Insert the Bluetooth dongle into PC host.
2. Double click the Bluetooth icon  on the lower right of the taskbar.

3. Click **Add** button.



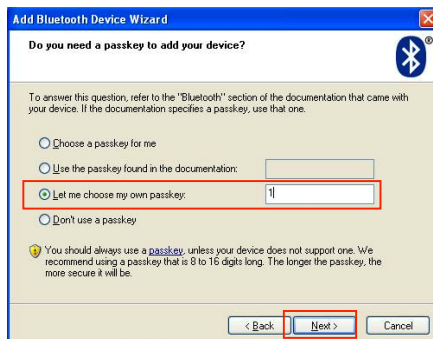
4. Check *My device is set up and ready to be found* and click **Next** button.



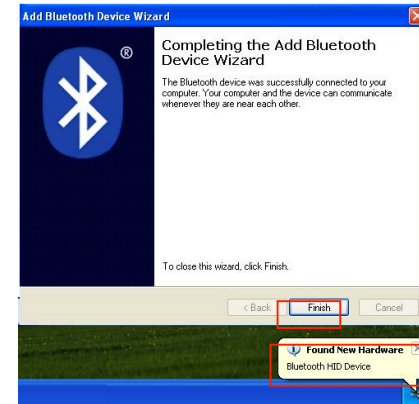
5. Select the 1x66 scanner and click **Next** button.



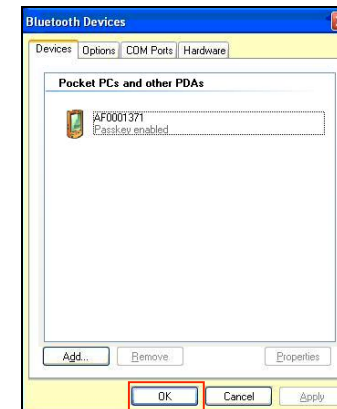
6. Select *Let me choose my own passkey* and input the passkey in the text field and click **Next** button.



7. When the connection is ready, a message will be displayed : **Found New Hardware Bluetooth HID Device**. Please click **Finish** button to complete the connection.



8. The scanner is ready to use. Please click **OK** button.



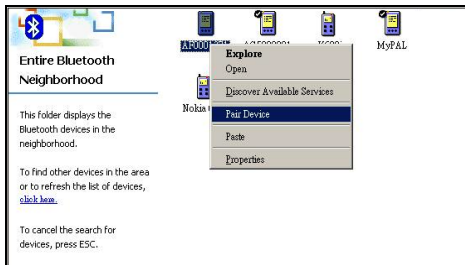
6.3.2 Widcomm Bluetooth Driver



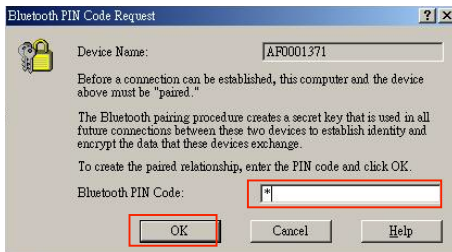
1. Click **My Bluetooth Places** icon at PC.
2. Click **Find Bluetooth Devices** icon at **My Bluetooth Places**.



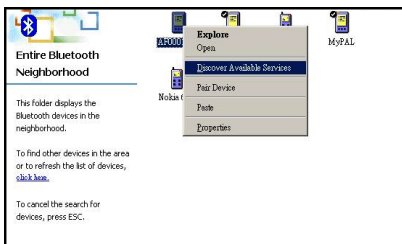
3. Right click the 1x66 scanner and select *Pair Device*.



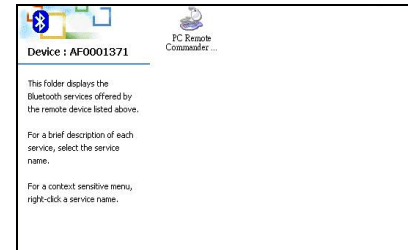
4. Input PIN code and click **OK** button.



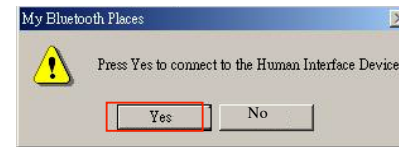
5. Right click 1x66 scanner and select *Discover Available Services*.



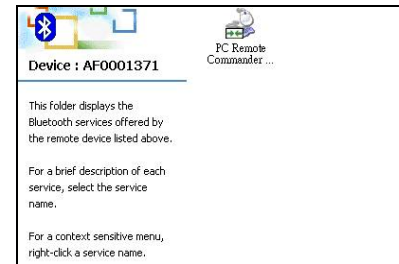
6. Click *PC Remote Commander* icon.



7. Click **Yes** Button.



8. When the green arrow icon is displayed, the connection is ready.



7. Symbology Parameters

This section describes user configurable parameters that are pertaining to barcode symbologies.

7.1 Code39

- **Standard / Full ASCII Code 39:** User can choose to read either Standard Code 39 or Full ASCII Code 39 by configuring this parameter.
- **Start/Stop Transmission:** This parameter specifies whether the start/stop characters of Code 39 are included in the data being transmitted.
- **Checksum Verification:** This parameter specifies whether the scanner will perform checksum verification when decoding barcodes. If the checksum is incorrect, the barcode will not be read.
- **Checksum Transmission:** This parameter specifies whether the checksum characters are included in the data being transmitted.

7.2 Italy / French Pharmacode

For Italy /French Pharmacode, there is always a checksum character included in the barcode. So the checksum verification is always performed when decoding these symbologies. User though can choose whether the checksum character is to be transmitted or not. The start / stop transmission of this code shares the same setting of Code 39.

- **Checksum Transmission:** This parameter specifies whether the checksum character is included in the data being transmitted.

7.3 Industrial / Interleave / Matrix 25

- **Start / Stop Selection:** This parameter provides the readability of all 2 of 5 symbology variants. For example, flight tickets actually use an Industrial 25 barcode but with Interleave 25 start / stop. In order to read this barcode, the **start / stop selection** parameter of Industrial 25 should set to '**Interleave 25**'.

- **Checksum Verification:** This parameter specifies whether the scanner will perform checksum verification when decoding barcodes. If the checksum is incorrect, the barcode will not be read.
- **Checksum Transmission:** This parameter specifies whether the checksum character is included in the data being transmitted.
- **Code Length Qualification:** Because of the weak structure of the codes, a partial scan has a high probability of decoding as a valid but 2 of 5 codes (known as short scan). To prevent this kind of reading, the **Code Length** settings can help to insure that the correct code is read by qualifying the allowable code length. Code length parameter is configured in two ways: **Fixed Code Length** or **Max / Min code length**. If the fixed code length is selected, up to 2 fixed lengths can be specified. If max / min code length is selected, the max length and the min length must be specified, and the scanner will only accept those codes which fall between max / min length specified.

7.4 Codabar

- **Start/Stop Transmission:** This parameter specifies whether the start/stop characters of Codabar are included in the data being transmitted.
- **Start / Stop Selection:** Four different start / stop pairs can be selected. The start / stop characters as listed below.
 - abcd / abcd
 - abcd / tn*e
 - ABCD / ABCD
 - ABCD / TN*E

7.5 UPCE

- **System Number Selection:** The UPCE comes with 2 formats: **System Number 0** and **System Number 1**. These two differ in the amount of encoding data. The system number 1 is the new UPCE extensible format. The system number 0 is the ordinary UPCE (system number 0). Users have the choice of enabling both system numbers or just system number 0.

Warning: Because of the way system number 1 is encoded, if both system numbers are enabled, user might suffer from short scanning UPCA/EAN13 into UPCE system number 1 barcodes.

- **Convert to UPCA:** If this parameter is enabled, the UPCE read will be expanded into UPCA, and the following processing will follow the parameters configured for UPCA.
- **System Number Transmission:** If this parameter is enabled, the system number will be included in the data being transmitted.
- **Checksum Transmission:** If this parameter is enabled, the checksum character will be included in the data being transmitted.

7.6 EAN8

- **Convert to EAN13:** If this parameter is enabled, the EAN8 read will be expanded into EAN13, and the following processing will follow the parameters configured for EAN13.
- **Checksum Transmission:** If this parameter is enabled, the checksum character will be included in the data being transmitted.

7.7 UPCA

- **Convert to EAN13:** If this parameter is enabled, the UPCA read will be expanded into EAN13, and the following processing will follow the parameters configured for EAN13.
- **System Number Transmission:** If this parameter is enabled, the system number will be included in the data being transmitted.
- **Checksum Transmission:** If this parameter is enabled, the checksum character will be included in the data being transmitted.

7.8 EAN13

- **ISBN / ISSN Conversion:** If these parameters are enabled, the scanner will convert the code read into ISBN or ISSN code if the formats are correct (EAN13 codes start with 978 or 979 for ISBN, and 977 for ISSN).
- **Checksum Transmission:** If this parameter is enabled, the checksum character will be included in the data being transmitted.

7.9 MSI

- **Checksum Verification:** Three kinds of checksum calculations implemented into MSI code: **Single Modulo 10**, **Double Modulo 11 & 10** checksum. If the checksum character is incorrect, the barcode will not be read.
- **Checksum Transmission:** User can control the checksum transmission format by configuring this parameter.
 - 1) Transmitted
 - 2) Last digit not transmitted
 - 3) Last 2 digits not transmitted
- **Code Length Qualification:** Because of the weak structure of code, a partial scan has a high probability of decoding as a valid MSI code (known as short scan). To prevent this kind of readings, the Code Length settings can help to ensure that the correct code is read by qualifying the allowable code length. Code length limitation is set in 2 ways: **Fixed Code Length** and **Max/Min code length**. If code length is selected, up to 2 fixed lengths can be specified. And if min code length is selected, the max length and the min length are specified, and the scanner will only accept those codes with length between max / min length specified.

7.10 Plessey

- **Convert to UK Plessey:** If this parameter is enabled, the scanner will change each occurrence of the character 'A' into character 'X' in the code.
- **Checksum Transmission:** If this parameter is enabled, the checksum characters (two characters) will be transmitted together with data.

7.11 Telepen

- **Telepen Output:** There are two flavors of encoding formats for Telepen. One is the original Telepen format and another is AIM Telepen format. User can choose the desired encoding format for Telepen readings.

7.12 RSS

- **Code ID Selection:** User has choice of using RSS Code ID (‘]e0’) or EAN128 Code ID (‘]C1’).
- **Code ID Transmission:** If this parameter is enabled, the Code ID selected by the preceding setting will be included in the data being transmitted.
- **Application ID Transmission:** If this parameter is enabled, the Application ID will be included in the data being transmitted.
- **Checksum Transmission:** If this parameter is enabled, the checksum character will be transmitted together with data.

8. Data Output Format

Data read by the scanner will be processed in the following sequence (Keyboard Wedge and USB interfaces).

- 1) The character substitution is performed on the barcode data.
- 2) The Code ID and the Length Code are inserted at the beginning of the data shown below.

[Code ID] [Length Code] [Data]

- 3) The resulting data of step 1 will be processed by the editing formats. For details, please refer to the section “Data Editing”.
- 4) And finally the Prefix Code and the Postfix Code will be added to the transmission.

[Prefix Code] [Resulting Data of Step 3] [Postfix Code]

8.1 Character Substitution

There are three character substitution settings on the scanner. These settings are configured on a character base. That is, a specific character is to be substituted for another character. The character substitution is performed on every occurrence of the characters specified in these settings. Be aware, the substitution is performed on the barcode itself (exclude Prefix Code, Postfix Code, Code ID, Length Code, and any Additional Field) and is performed before editing mode processing.

If only the character to be replaced is specified, every occurrence of that character in the barcode will be taken away.

8.2 Prefix / Postfix Code

Up to four characters of prefix / postfix code can be configured for the scanner.

8.3 Code ID

Up to two characters of Code ID can be configured for each symbol. To minimize the Code ID configuration efforts, the scanner provides five pre-defined Code ID Sets that user can select from. User can first select one of the Sets and then make desired modifications. The pre-defined Code ID Sets are listed below.

| | Set 1 | Set 2 | Set 3 | Set 4 | Set 5 |
|-------------------|-------|-------|-------|-------|-------|
| Code 39 | A | C | Y | M | A |
| Italy Pharmacode | A | C | Y | M | A |
| French Pharmacode | A | C | Y | M | A |
| Industrial 25 | C | H | H | H | S |
| Interleave 25 | D | I | Z | I | S |
| Matrix 25 | E | G | G | G | S |
| Codabar | F | N | X | N | F |
| Code 93 | I | L | L | L | G |
| Code 128 | H | K | K | K | C |
| UPCE | S | E | C | E | E |
| EAN8 | P | B | B | FF | E |
| EAN13 | M | A | A | F | E |
| MSI | V | V | D | P | M |
| Plessey | W | W | E | Q | P |
| UPCA | J | A | A | A | E |
| Telepen | Z | | | | |

8.4 Length Code

Two digits Length Code representing the length of data (character count) can be inserted in front of data being transmitted. This Length Code parameter can be individually enabled or disabled for each barcode symbology.

9. Data Editing

The 1166/1266 scanner provides advanced data editing functions for data for Data editing is performed according to user configured editing formats. Up editing formats can be configured.

Data is divided into fields by user specified rules. These fields together with configurable additional fields constitute the data actually sent to the host computer. The detailed descriptions and the configuration procedures of the editing functions are described in this section.

9.1 Select Editing Format

To start configuring an editing format, the editing format to be configured must first be selected. Once it is selected, the parameters pertaining to editing (applicable condition, total number of field, field dividing rules, addition and field transmission sequence parameters) can be configured. After all the parameters are configured, the “End of Format Programming” label must be pressed to complete the configuration of that editing format.

Note: Before completing the configuration of the editing format, if parameters other than those pertaining to editing format are read, the editing format configuration will be aborted. User must restart the configuration again by pressing the editing format to be configured.

9.2 Restore Default Format

After the editing format to be configured is selected, user can read the “Default Format” label to put the editing format back to default setting. The settings of the editing format are listed below.

- Applicable Code Type: All
- Applicable Length: Max length and min length are zero.
- Matching string: Empty
- Matching String Location: 0
- Total number of field: 1
- Field Setting: Not Configured
- Additional Fields: Empty
- Field Transmission Sequence: F1

9.3 Applicable Conditions

Three applicable conditions can be configured to qualify whether the data read by the scanner can be processed by the particular editing format. Data editing will not be performed unless all three applicable conditions are met. The configurable applicable conditions are described below.

- **Code Type:** This parameter specifies the code type of the data eligible for data editing. Multiple code types can be specified for this parameter.
- **Data Length:** This parameter specifies the length (character count) of the data eligible for data editing. It is specified in the range format. The length of the data must fall between max and min length limits. If the max length and the min length configured is both zero, the scanner will not perform this length qualification.
- **Matching String and its Location:** User can specify a particular character string (up to four characters) that must appear in the data that is eligible for data editing. User can also specify where (character position, starts from one) this string should appear in the data by configuring the matching string location. If the location specified is zero, the scanner only checks for the existence of the matching string in the data. To disable the matching string qualification, just leave the matching string empty.

9.4 Total Number of Fields

Data can be divided into at most 6 fields. The total number of fields must be correctly specified. The fields are numbered from F1 to F6 accordingly, but only F1 to F5 can be configured. Please note that, the number of fields can be configured is always one less than the total number of fields specified. The extra data characters beyond the last field configured will be automatically assigned to the next field. That is, if three fields are configured for the editing format, the data characters after F3 will be assigned to F4 automatically.

9.5 Dividing Data into Fields

Data eligible for editing format is divided into fields according to user specified rules. The rule for each field can be configured in two ways.

- **Field Terminating String:** The field division can be specified by termination string of the field. The field terminating string configured can be up to two characters. The scanner will search for the occurrence of this particular string in the data for the field. The field terminating string is

always included in the field. User though, has the option of discarding terminating string.

- **Field Length:** The field division can be simply specified by the field length. The scanner will assign the next specified number of characters to the field.

9.6 Additional Fields

User can create up to five additional fields for each editing format. Each additional field can have at most four characters. The additional fields are numbered AF1 to AF5 accordingly.

9.7 Field Transmission Sequence

After the data fields and the additional fields are configured, user can now specify the transmission sequence of these fields that comprise the final data. The label must be read before assigning the field transmission sequence. And the desired field transmission sequence can be specified. The scanner will transmit the fields in the order (sequence) user programmed when sending data. The transmission sequence can be assigned in any desired order and fields can be assigned multiple times. The maximum number of fields can be assigned is 10. After the sequence has been assigned, the “End” label must be read to complete the setting.

9.8 End of Format Programming

After all the desired parameters are configured, the “End of Format Programming” label must be read to conclude the programming of the editing format. This label is located at the bottom of every even page in the “Editing Format Parameters” section of the configuration manual.

9.9 Activate Data Editing Formats

Before data can be processed by a particular editing format, that format must be enabled. The editing formats can be enabled or disabled individually.

9.10 Exclusive Data Editing

If this parameter is enabled, all data read by the scanner must be processed by the editing format. If the data is not eligible for all enabled editing formats, the scanner will not accept the reading and the data will not be transmitted.

9.11 Programming Examples

Example 1: Extracts data from the 10th character to the 19th character.

Total Number of Fields: 3

Field 1: Divide field by field length, set field length to 9

Field 2: Divide field by field length, set field length to 10

Field Transmission Sequence: F2

Example 2: Extract the date code, item number, and quantity information from barcodes. Data is encoded in the barcode like this: From the first character to the 6th character is the date code. From the 7th character is the item number, its length is not fixed but is delimited by a '-' character. After the '-' character is the quantity information.

Data should be transmitted like this: Item number goes first, then a TAB character, and then the date code, and then another TAB character and finally the quantity.

Total Number of Fields: 3

Field 1: Divide fields by field length and set the field length to 6.

Field 2: Divide fields by field terminating string. Set terminating string to '-', and discard the terminating string.

Additional Field 1: Set to one TAB character.

Field Transmission Sequence:

F2 AF1 F1 AF1 F3

10. Configuring your 1166/1266

The configuration of 1166/1266 Scanner is done by reading the setup contained in the Configuration Manual (the second part of this manual section describes the procedure of configuring the scanner. Some configuration examples are also given in this section for illustration.

10.1 Enter Configuration Mode

To start the configuration, the "Enter Setup" label must be read. This will scanner in the configuration mode. The scanner will respond with 6 beep indicator will turn blue after the label is read. This "Enter Setup" label is at the bottom of almost every even page of the Configuration Manual.

10.2 Default

All the parameters of the scanner will return to their default values by reading the "Default" label. The scanner will beep twice when the "Default" label is read.

10.3 List Setting

The current setting of all scanner parameters can be sent to the host computer for user inspection. The listing is separated into ten pages. User can select the interest by reading the "Page x" label

Page 1: Interface, Buzzer, and Scanner Parameters

Page 2: Prefix, Postfix, and Length Code Setting

Page 3: Code ID

Page 4: Readable Symbolologies

Page 5: Symbology Parameters (1/3)

Page 6: Symbology Parameters (2/3)

Page 7: Symbology Parameters (3/3)

Page 8: Editing Format 1

Page 9: Editing Format 2

Page 10: Editing Format 3

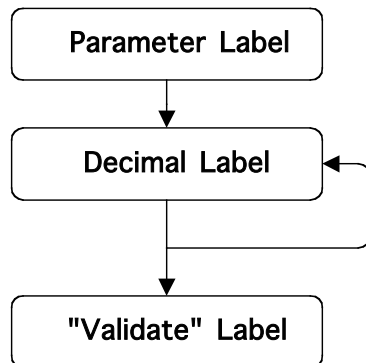
10.4 Setting Parameter Values

For most of the parameters, only one read is required to set them to new values. The scanner will respond with two beeps when these parameters are configured. But for some special parameters, multiple reads are required to complete the setting. The scanner will respond with a short beep if the configuration of the parameter is still not complete. These parameters usually refer to a numeric value or a string of characters, such as keyboard type, inter-character delay, prefix / postfix code, etc..

For these kinds of parameters, the label of the parameter to be configured must be read first. Then the labels comprising the numeric value or character string are read. Finally, the “Validate” label must be read to complete the setting. The scanner will respond with two beeps when the “Validate” label is read.

10.4.1 Numeric Parameters

The configuration procedures for numeric parameters are shown below.



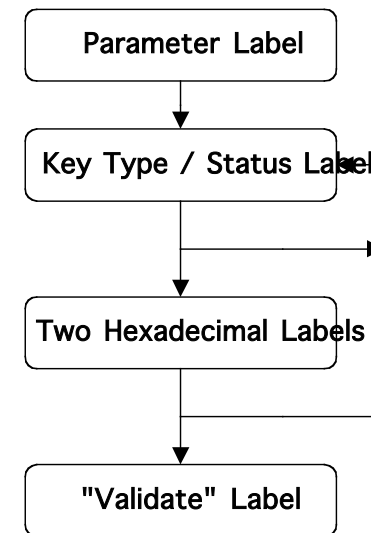
For example, to configure the Inter-Character Delay to be 15 ms, the “Inter-Character Delay” label is first read, and then the decimal digit labels “1” and “5”, and finally, the “Validate” label to complete the setting.

10.4.2 Character String Parameters

Basically, each character of a string is programmed by two hexadecimal digits, which usually comprise a value that is the ASCII code equivalence of the character being programmed.

Beside the two hexadecimal digits, there is an optional key type/status can also be specified for each character of the string parameters. This optional key type/status can only be specified for some particular parameters when keyboard interface is used. These parameters are: Prefix Code, Postfix Code, Code ID, and Additional Fields of Editing Formats.

The available key type/status settings can be selected will be described briefly. The configuration procedures for character string parameters are shown below.



For example, to configure the Prefix Code to be “AB”, the “Prefix Code” label is first read, and then the hexadecimal digit labels “4”, “1”, “4”, and “2” are finally, the “Validate” label to complete the setting.

10.4.3 Key Type/Status Setting

The key type/status is specified in character basis. Each character programmed has a default of *Normal* key type. A character of normal key type can have status settings (add Shift/Control/Alternate).

Whereas a character of *Scan Code* type may not have any associated key status settings.

- **Normal Key Type:** When this label is read, the scanner will assume the following hexadecimal digits are the ASCII code of the character being programmed. And it will also clear all the associated key status settings to the current character.
- **Scan Code:** When this label is read, the scanner will assume the following hexadecimal digits are the scan code value of the character being programmed.
- **Add Shift:** The Shift key will be sent together with the character being programmed.
- **Add Control (L):** The left Control key will be sent together with the character being programmed.

- **Add Alternate (L):** The left Alternate key will be sent together with the character programmed.
- **Add Control (R):** The right Control key will be sent together with the character programmed.
- **Add Alternate (R):** The right Alternate key will be sent together with the character programmed.

For example, to program the Prefix Code to be “Ctrl-Shift-B”, “C”, the programming sequence should be:

- 1) “Prefix Code” label
- 2) “Add Control (L)” label
- 3) “Add Shift” label
- 4) “4” of the hexadecimal digit
- 5) “2” of the hexadecimal digit
- 6) “4” of the hexadecimal digit
- 7) “3” of the hexadecimal digit
- 8) “Validate”

Note: In internal representation, characters that are specified with either scan code or associate key status, occupy two normal characters each. So the maximum number of characters can be configured for a string parameter will decrease, if these character specifications are used.

10.5 Exit Configuration Mode

Both the “Update”, and the “Exit Setup without Changes” labels will exit the scanner from configuration mode when they are read. These two labels differ in whether to keep the new settings on the scanner or not, as their names suggest. The scanner will respond with 6 beeps and restart itself, if either label is read.