

1. Setup



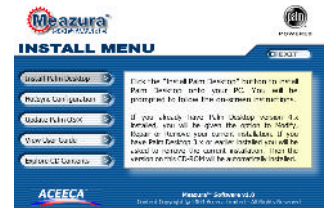
Meazura™ Setup

When powering up your Meazura™ for the first time, press the Power button and follow the on-screen instructions to setup the device. This includes calibration of the touch sensitive screen and setting your location, date and time. During this procedure, you can at your option take a Graffiti writing tutorial for entering text and special characters on your Meazura™.

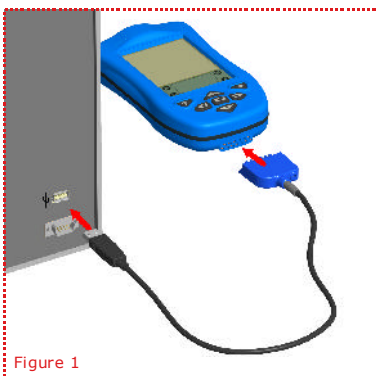
PC Setup

To communicate between the Meazura™ and your PC, you must install 'Palm Desktop' located on your CD-ROM included with your kit.

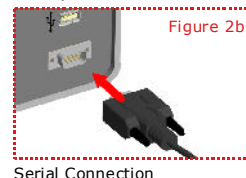
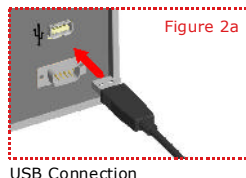
1. Exit all programs, including those that may be running in the taskbar.
2. Insert the Meazura™ Software CD into your CD-ROM drive.
3. The install menu should appear automatically. If it doesn't then navigate to '**install_menu.exe**' located on your CD-ROM using Windows Explorer.
4. Follow the on-screen instruction for installing 'Palm Desktop'.



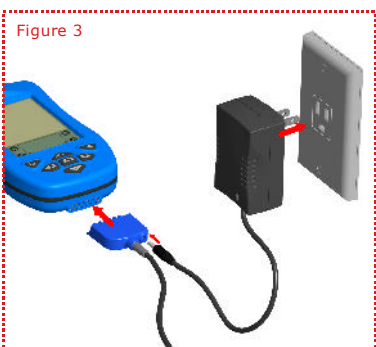
2. Connect



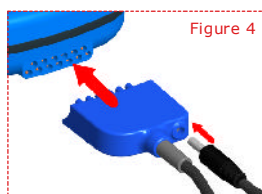
- Plug the Communications cable into a USB or Serial port on your computer (as pictured in figure 2a/b below).
- Connect the communications cable to the communication connector located at the bottom of the Meazura™ (as pictured in figure 1 left).
- Ensure the Meazura™ Desktop Software CD-ROM is inserted into your computers CD-ROM drive.
- Press the power button to turn on your Meazura™ and perform a HotSync operation following the instructions in step 4 to commence the driver install for your Meazura™.
- Follow all instructions on your PC and your Meazura™.



3. Charging

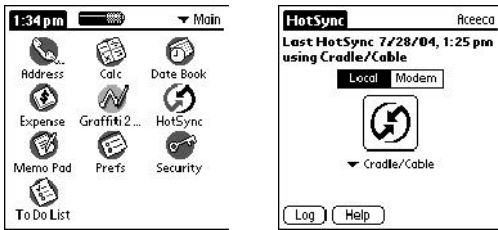


- Connect your AC adaptor to the bottom of your communications cable (as pictured below in figure 4).
- Connect the communications cable to the comms connector located at the bottom of your Meazura™ (as pictured below in figure 4).
- Ensure your connection setup is the same as pictured in figure 3 left to commence charging.



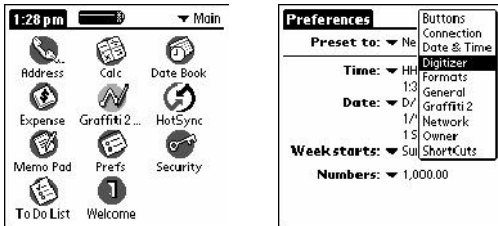
WARNING: For safety reasons, ensure the Meazura™ is completely dry before using the electrical charger.
(Charging time varies depending on battery level)

4. HotSync®



- Ensure Palm Desktop software is installed on your computer (see step 1 'Setup')
- Connect the communications cable to your Meazura™ and your computer as per instructions over page in step 2 ('Connect').
- On your Meazura™ RDA, tap on the HotSync icon (as pictured left).
- Tap the large icon in the center of the screen to start the HotSync operation.
- Follow all instructions on your PC and your Meazura™.

5. Calibration



This procedure calibrates the touch sensitive screen on your Meazura™

- Tap on the 'Prefs' icon
- From the dropdown list, choose "Digitizer"
- Follow on-screen instructions

Other preferences for setting up your handheld can be found in the dropdown list, such as "Date and Time". To adjust these extra settings, simply tap the setting choice in dropdown list and follow the on-screen instructions.

6. Resetting

Soft Reset (no loss of data)



Press and release Power and Backlight button together

Hard Reset (restores Meazura™ to factory settings)



1. Press and hold the Power and Backlight button together then release the Backlight button only
2. Release the Power button when the Palm Powered logo appears
3. Follow on-screen instructions



7. Contrast/Backlight



Backlight

To turn on the backlight, press the Backlight button (pictured right)



Contrast

To adjust the contrast of the screen, hold the backlight button for 1.5 seconds to bring up the contrast slider on-screen (as pictured left).

- Use your stylus to drag the slider bar until you reach your desired contrast, then click 'Done'.